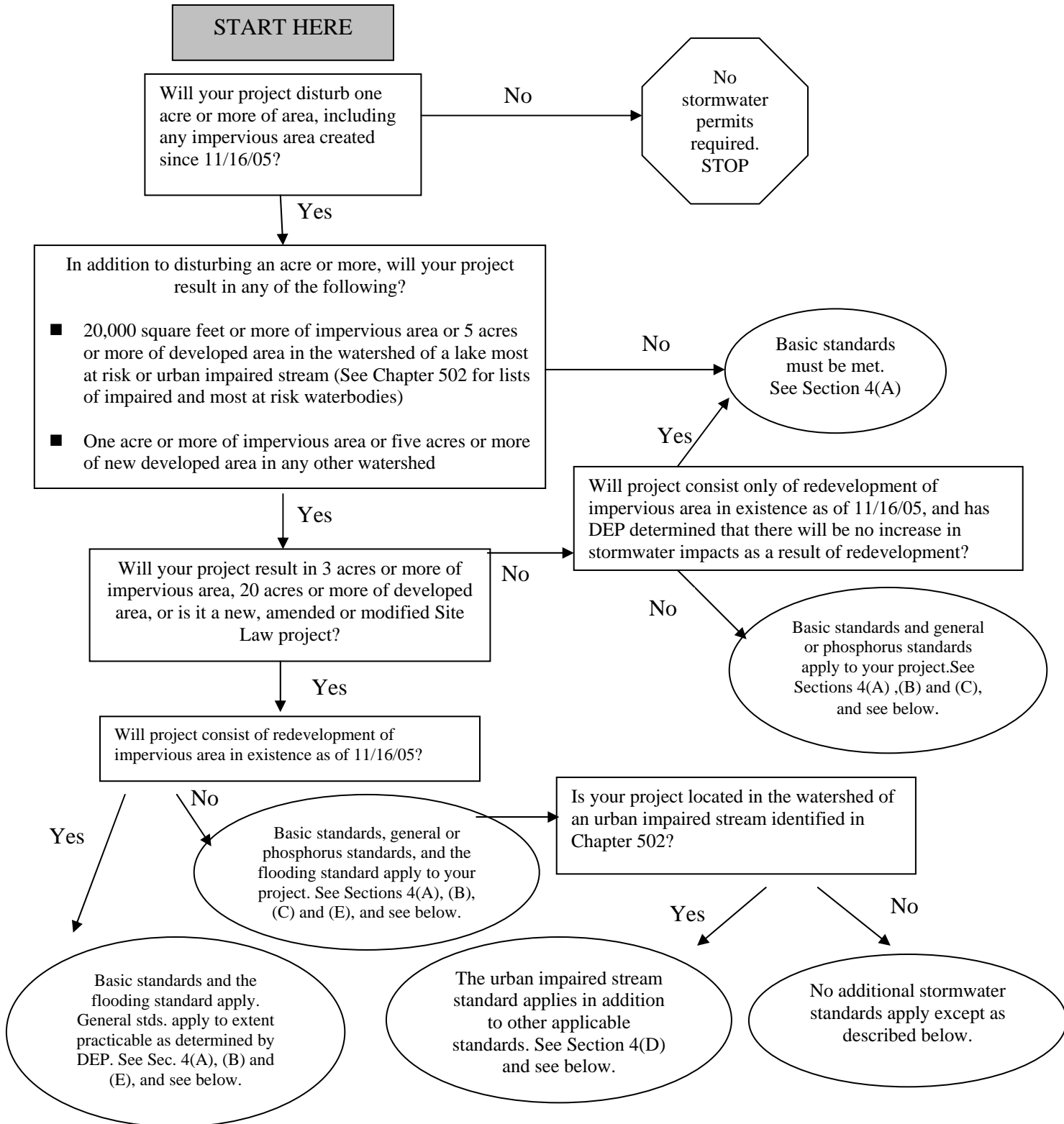


Flowchart for Chapter 500 Standards
(Includes redevelopment as approved in 2006 revisions)



Other standards may apply to your project if it includes any of the following.

Easements and Covenants See Section 4(F)	Management of concentrated stormwater discharges. See Section 5(A)	Discharge to freshwater or coastal wetlands See Section 5(B)	Threatened or endangered species. See Section 5(C)	Additional controls. See Section 5(D)	Discharge to a public storm sewer system. See Section 5(E)
---	---	---	---	--	---