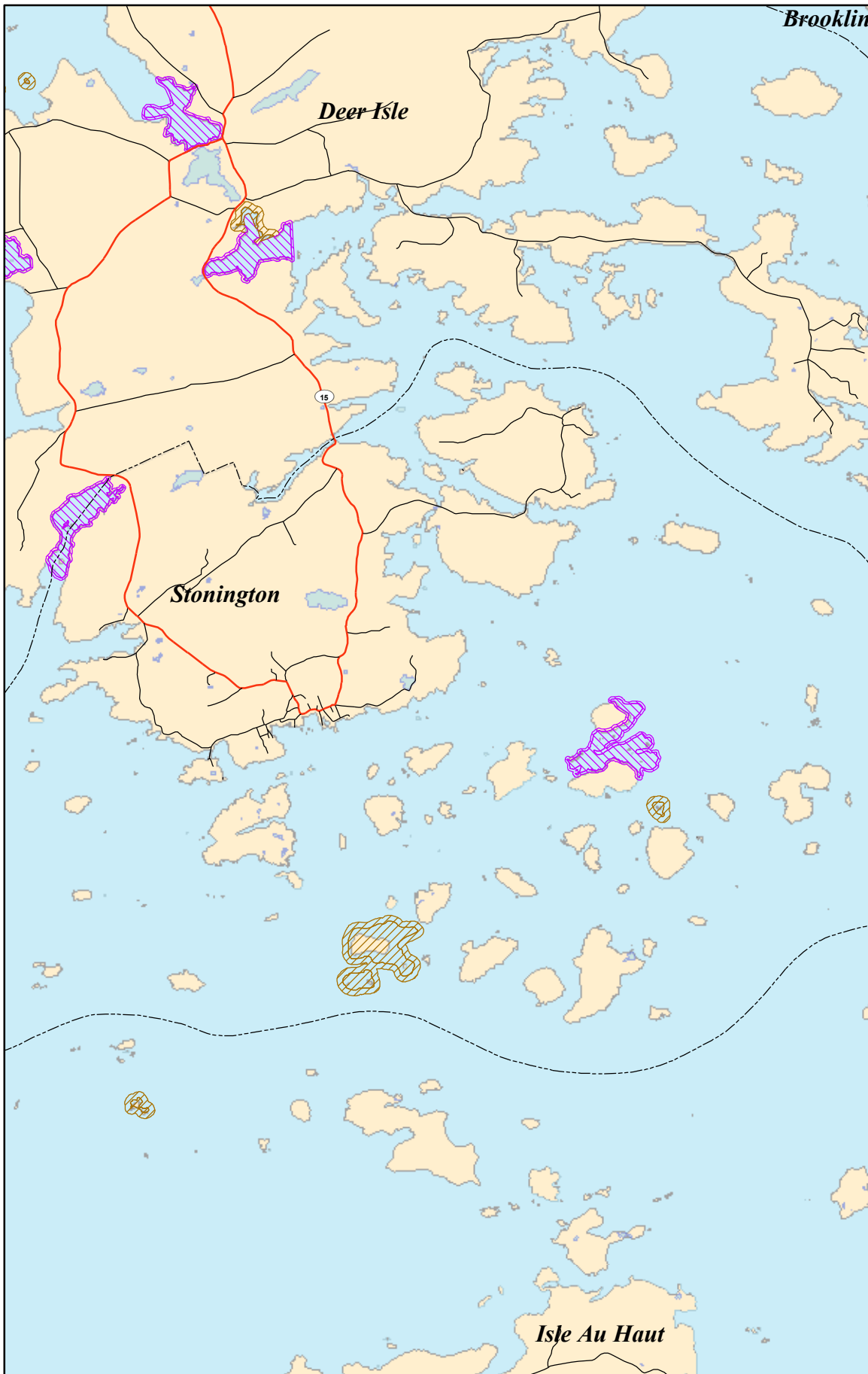



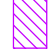
Stonington

Significant Wildlife Habitat - Shorebird Habitats Only



--- Town lines

 Shorebird roosting area

 Shorebird feeding area

Shorebird habitats are shown as defined by P.L. 2007 Chapter 290, effective June 14, 2007.

Shorebird feeding areas include a 100-foot-wide surrounding buffer referred to as the feeding buffer. Shorebird roosting areas include a 250-foot-wide surrounding buffer referred to as the roosting buffer.

This map represents significant wildlife habitat that is regulated by the Natural Resources Protection Act. All information on this map should be field checked by qualified individuals for a determination regarding whether your property is affected.

Background hydrologic, topographic, and political features are accurate to +/- 40 feet and are based on USGS topographic maps.



Map scale:

1:75,253

when printed on
8.5 x 11 paper



Questions or need a field visit? Contact DEP at 1-800-452-1942
www.maine.gov/dep/blwq/docstand/nrpa/birdhabitat

September 10, 2007