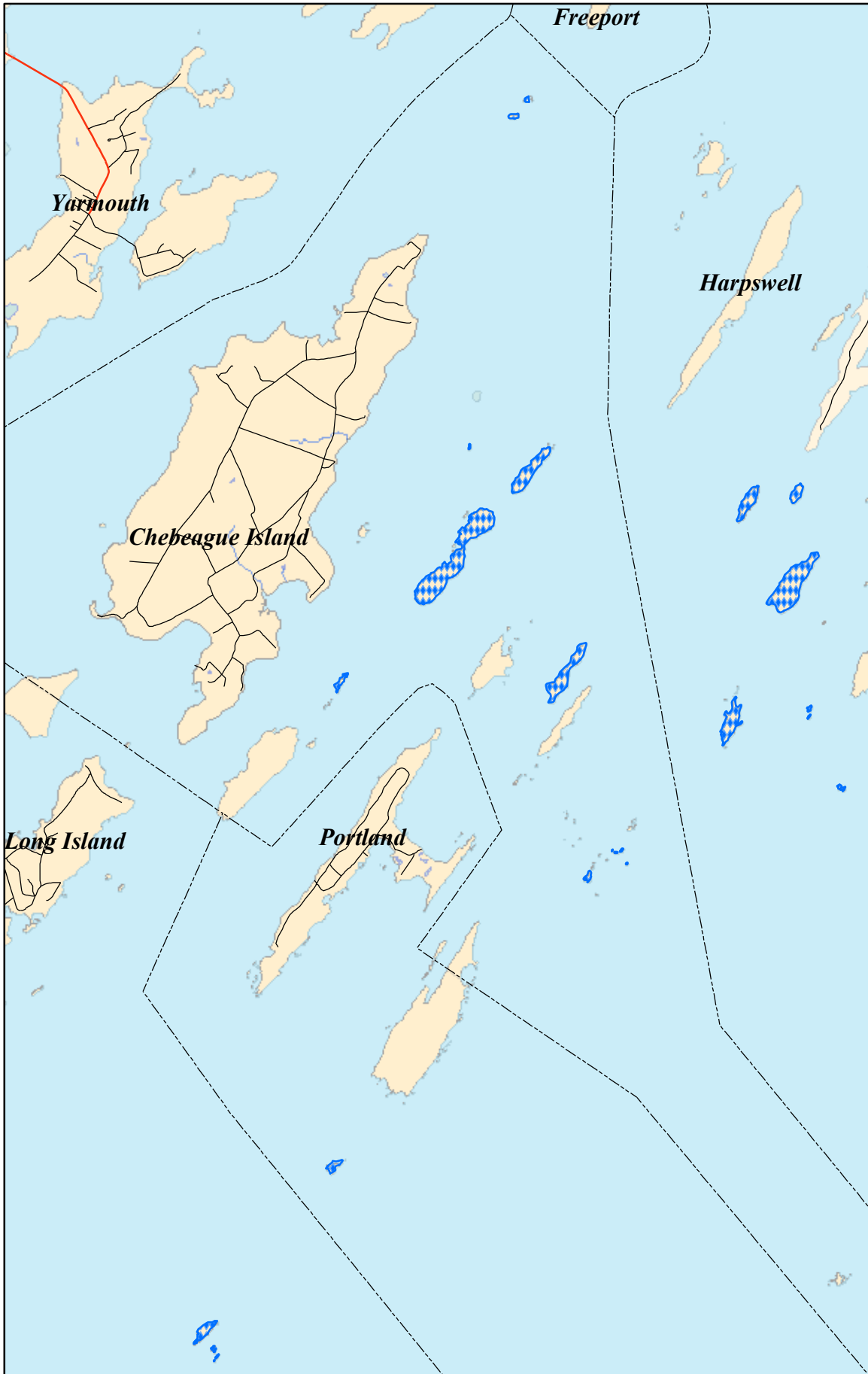



# Chebeague Island

## Significant Wildlife Habitat - Seabird Nesting Islands



- Town lines
-  Seabird Nesting Islands

This map represents significant wildlife habitat that is regulated by the Natural Resources Protection Act. All information on this map should be field checked by qualified individuals for a determination regarding whether your property is affected.

Background hydrologic, topographic, and political features are accurate to +/- 40 feet and are based on USGS topographic maps.



Map scale:

1:62,695

when printed on  
8.5 x 11 paper



Questions or need a field visit? Contact DEP at 1-800-452-1942  
[www.maine.gov/dep/blwq/docstand/nrpa/birdhabitat](http://www.maine.gov/dep/blwq/docstand/nrpa/birdhabitat)

September 10, 2007