

# **A Report on the State Vehicle Fleet: Emissions, Fuel Economy, and Vehicle Miles Traveled**

**As required by Executive Order 11,  
“Concerning Increasing the Efficiency of  
State Government’s Transportation Sector”**

Prepared by:       Maine Department of Environmental Protection  
                          Bureau of Air Quality  
                          17 State House Station  
                          Augusta, ME 04333-0017

November 2008

## Executive Order Background

On March 17, 2004 Governor Baldacci signed an Executive Order “*An Order Concerning Increasing the Efficiency Of State Government’s Transportation Sector*”. As part of that Executive Order, the Department of Environmental Protection (DEP) was directed to compile an annual vehicle replacement report that reflects the improvement to the fleet fuel economy for vehicles equal to or less than 8,500 GVW and the emissions profile for all new vehicles purchased by state agencies. For the fuel economy and emissions profile elements, this report reflects **only new vehicles** purchased and fuel efficiencies are based upon the U.S. EPA fuel economy guide. The Executive Order also requires state agencies to report the number of Vehicle Miles Traveled (VMT) of all state vehicles.

### State Fleet Overview:

There are three primary vehicle fleets maintained by the State:

- Department of Administrative and Financial Services, Central Fleet Management (CFM);
- Department of Public Safety (DPS); and
- Department of Transportation (DOT).

In addition to the primary fleets the following state agencies own and maintain their own smaller pool of vehicles:

- Department of Agriculture, Food, and Rural Resources (DOA);
- Department of Inland Fisheries and Wildlife;
- Department of Marine Resources;
- Department of Conservation;
- Department of Corrections;
- Defense, Veterans and Emergency Management;
- Maine State Library; and
- Department of Health and Human Services.

For FY 2007 CFM, DPS, DOT, and DOA were the only agencies reporting the purchase of new vehicles.

## I. Summary of Emissions Profile

When vehicles are manufactured, not all vehicles are “certified” to the same tailpipe emissions. Simply said, some vehicles are cleaner than others -- much cleaner! Benefits of cleaner vehicles are not only hydrocarbon reductions but also reductions in nitrogen oxides and air toxics.

CFM, DPS, DOT and DOA reported to the DEP each **new** vehicle purchased and the vehicle which it replaced. The DEP then compared the emission certification of the new

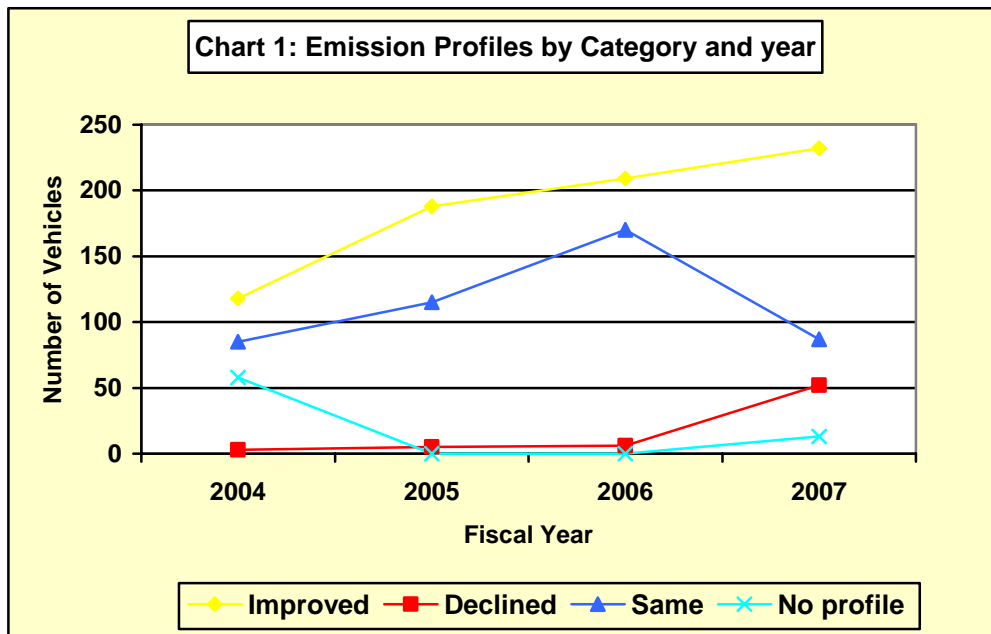
vehicle with the replacement vehicle. For FY 2007, 232 of the total number of 384 vehicles purchased by state agencies reported significantly improved emission standards. It should be noted that the vehicles are purchased with the best emissions profile that meet the agencies operational needs. In some instances, an emissions profile may decline in order to obtain a vehicle that meets the agencies operational needs within financial resources. See Attachment A for detail of replacements.

Year of Replacement	2007
Emissions Profile Improved	232
Emissions Profile Stayed the Same	87
Emissions Profile Declined	52
No original Emissions Profile Available	13
Total	384

**60 percent** of the 384 new replacement vehicles purchased in 2007 have improved (reduced) emissions. **14 percent** of the vehicles purchased had increased emissions.

Staff estimated the emissions profile for vehicles where none was available with the exception of one replacement vehicle which was a heavy duty truck. Emissions for Heavy duty trucks are measured in NOx so although no profile was available it was assumed that the newer truck improved emissions.

Chart 1 displays the emissions profiles by category and year of replacement. The chart illustrates that the number of vehicles showing an emissions improvement has increased for fiscal years 2004, 2005, 2006 and 2007. Attachment A lists the emission profiles in more detail by agency.



## II. Fuel Economy.<sup>1</sup>

The agencies reported the following fuel economy information on new vehicle purchases for FY 2007 compared to the vehicle it replaced:

Agency	Improved Fuel Economy	Decreased Fuel Economy	No Fuel Economy Change	Undetermined Fuel Economy
CFM	134	13	13	5
DPS	22	32	34	27
DOT	19	3	0	81
Agriculture	0	0	0	1
<b>Totals</b>	<b>175</b>	<b>48</b>	<b>47</b>	<b>114</b>

In addition to the 384 vehicles replaced in 2007, there were also 55 new vehicles purchased.

Vehicles are purchased with the best fuel economy while still meeting the agency's operational needs. In some instances, fuel economy may decline in order to obtain a vehicle that meets the agency's operational needs within financial resources. Additionally, in some cases, a vehicle may be replaced with an identical model, but with its EPA fuel economy modified by the manufacturer either positively or negatively for the newer model year. Medium and heavy-duty vehicles are not required to meet a fuel economy standard and those vehicles are reported with an undetermined fuel economy rating. See Attachment B for the detail of replacements.

## III. Summary of Fuel Economy for FY 2007

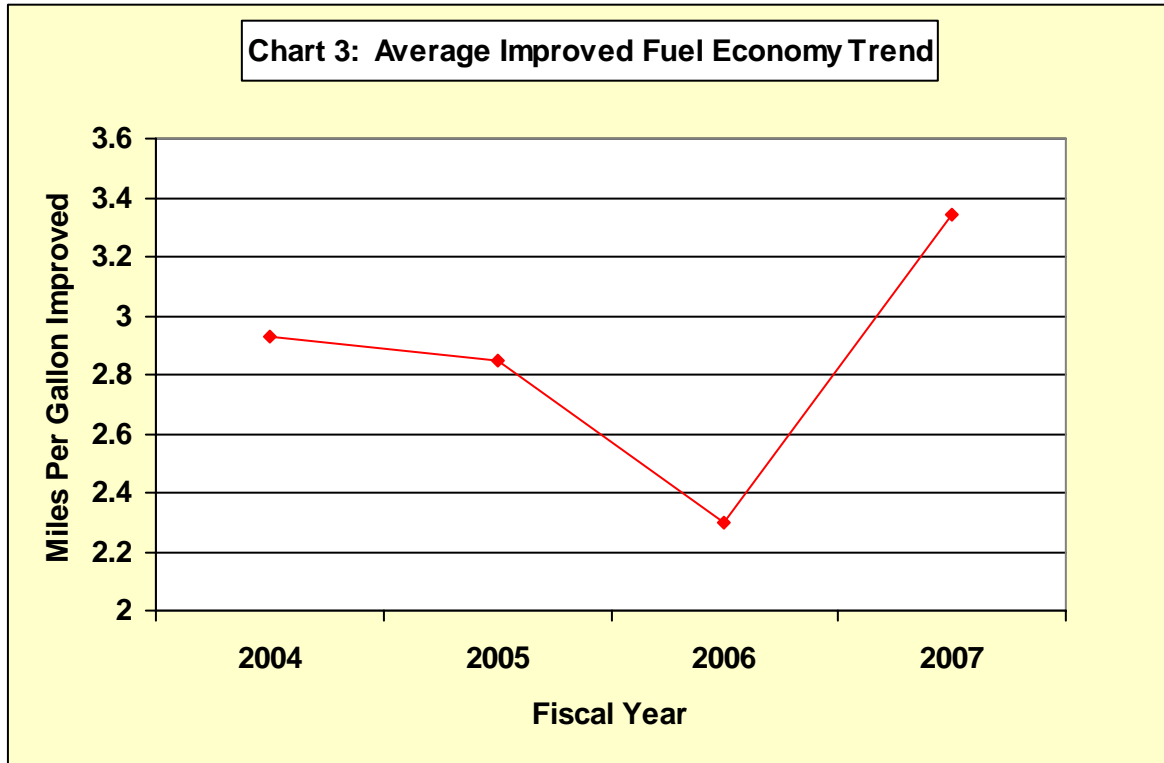
- A. The average improved fuel economy based on the number of vehicles replaced is shown below for FY 2007. Calculations of the average improved fuel economy are based upon the following formula:

$$\frac{\text{(total \# of gallons improved - total \# of gallons decreased)}}{\text{(total vehicle w/improved mileage - total vehicles w/decreasing mileage)}} = \text{Total Gallons improved} / \text{Total Vehicles with improved mileage}$$

Fiscal Year	Number of Vehicles Replaced	Average Improved Fuel Economy
2007	384	3.34 miles per gallon

<sup>1</sup> For comparative purposes fuel economy was reported using the EPA Fuel Economy Guide which reports fuel economy for new vehicles.

Chart 3 illustrates the average improved fuel economy for fiscal years 2004 through 2007.

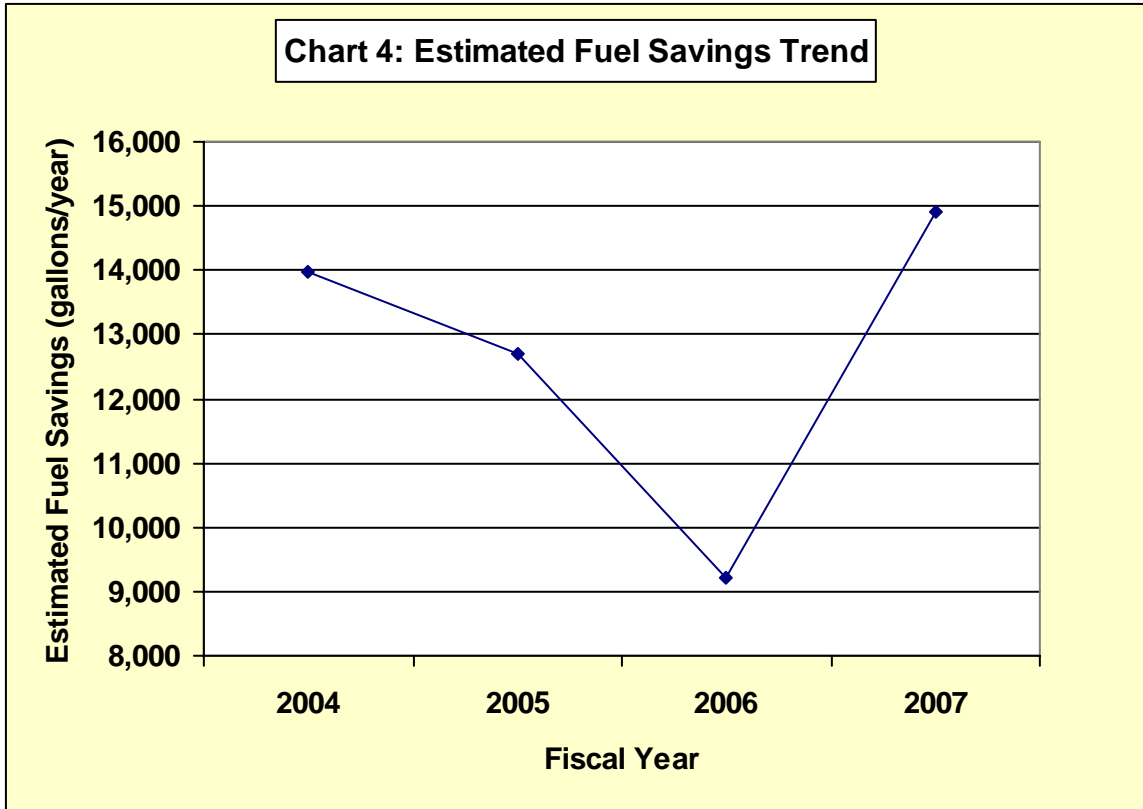


B. Based on the improved fuel economy savings for each year, and assuming the original vehicle and its replacement travels/traveled an average of 15,000 miles per year, the following is the estimated savings in gasoline for FY 2007. The estimated fuel savings was based upon the following calculation:

$$(\# \text{ of gallons improved} \times 15,000 \text{ miles}) - (\# \text{ gallons decreased} \times 15,000 \text{ miles}) = \text{Fuel savings}$$

Fiscal Year	Estimated Miles Traveled per year	Estimated Fuel Savings (gallons)
2007	15,000	14,924

Chart 4 illustrates the trend of estimated fuel savings for 2004, 2005, 2006 and 2007.

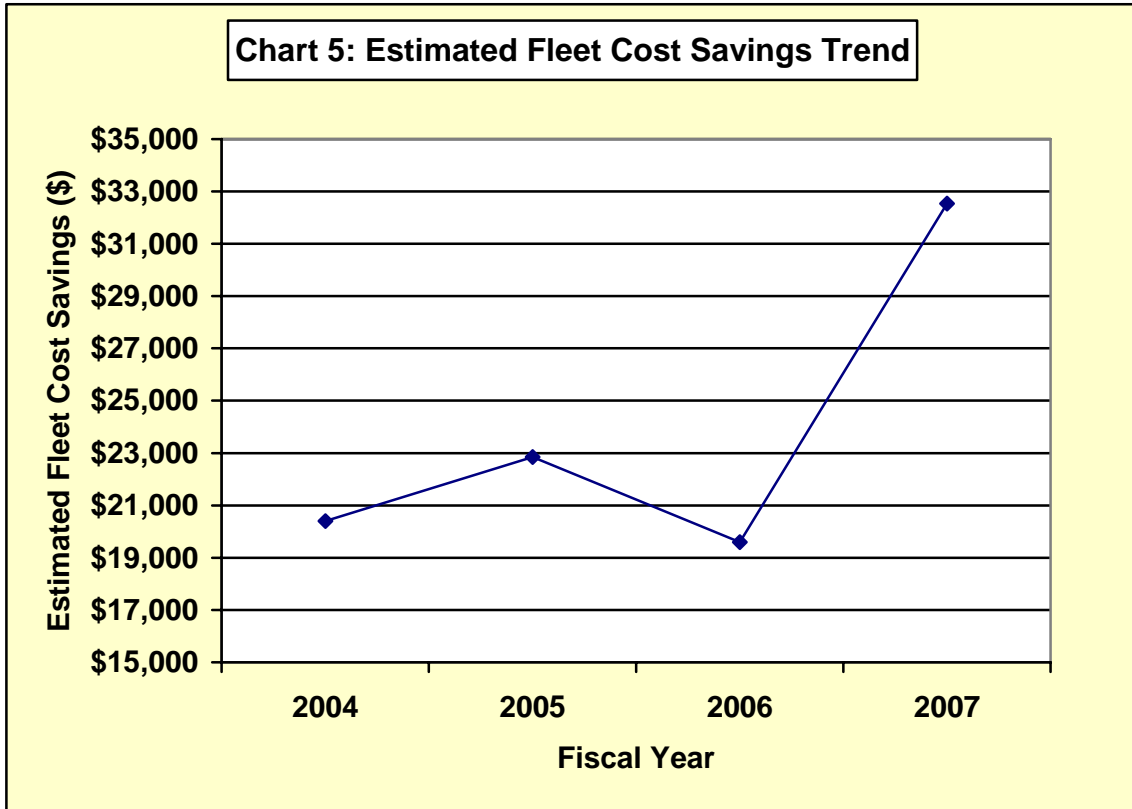


C. Based on the estimated fuel savings for each year, the estimated cost savings for the state fleet for the average gasoline price paid by the state equates to a savings of:

Fiscal Year	Average price per gallon of gasoline	Estimated fleet cost savings
2007	\$2.18	\$32,534

The estimated fuel cost savings is calculated by multiplying the estimated fuel savings by the average price per gallon of gasoline paid by the state.

Chart 5 illustrates the estimated fleet cost savings trend for fiscal years 2004, 2005, 2006, and 2007.

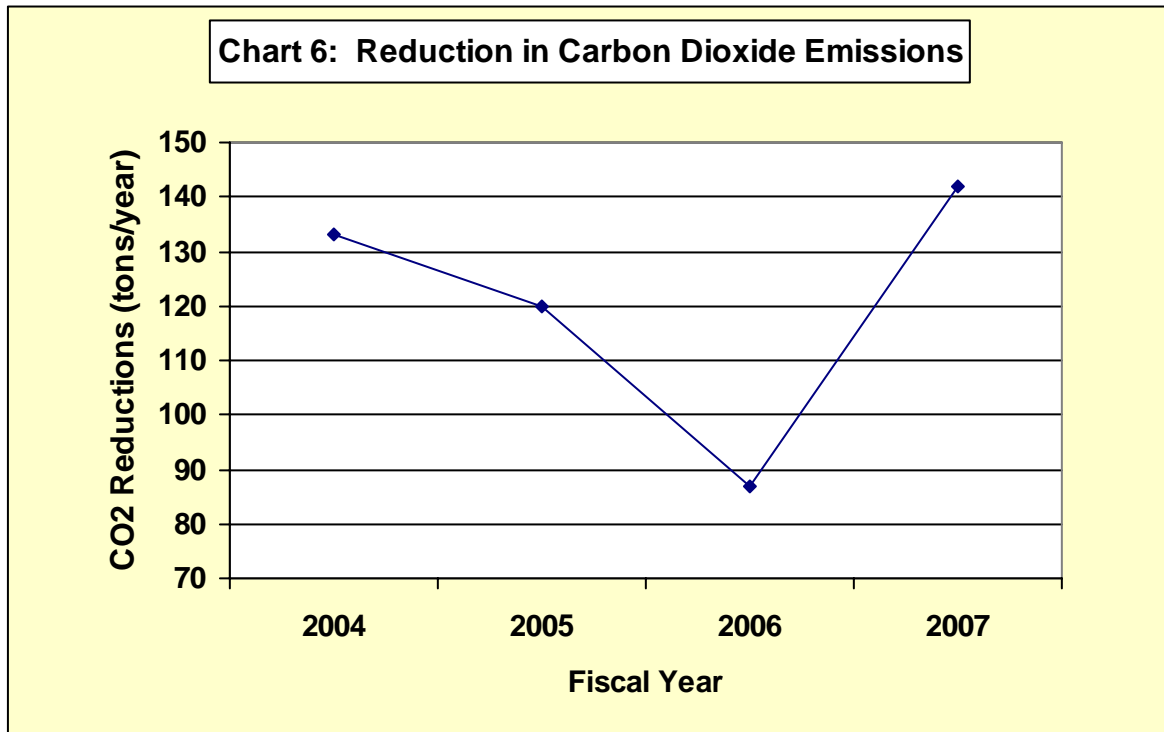


D. Based on an emission factor for a gallon of gasoline of 19 pounds of carbon dioxide (CO<sub>2</sub>) equates to:

Fiscal year	Reduction in Carbon Dioxide emissions (tons)
2007	142

The Carbon Dioxide (CO<sub>2</sub>) savings are calculated by multiplying the Estimated Fuel savings by 19 and dividing by 2000 to obtain the CO<sub>2</sub> reductions.

Chart 6 illustrates the trend in the reduction in carbon dioxide emissions for fiscal years 2004, 2005, 2006, and 2007.



Since 2004, as a result of its new vehicle purchases and subsequent improved fuel economy, the state has saved over \$95,000 and reduced CO<sub>2</sub> by 482 tons.

#### IV. Reduction of Vehicle Miles Traveled (VMT)

The Executive Order requires each state agency to report at the end of each fiscal year the vehicle miles traveled (VMT) by their respective state vehicles. In addition, the Department of Administrative and Financial Services (DAFS) is to provide a report of all paid mileage (VMT) reimbursed by them. Heavy duty trucks and equipment that record usage by hours rather than mileage are exempt from this reporting requirement.

2004 was the first year this data was collected and provides the base year with which to compare VMT for subsequent years. The following data was collected according to the Executive Order:

1. **Paid Mileage** - Mileage paid to employees who use their own vehicles for travel purposes,
2. **Leased Mileage** - Mileage accumulated on vehicles leased and controlled from/by CFM (some agencies own the vehicles but they are controlled by CFM), and

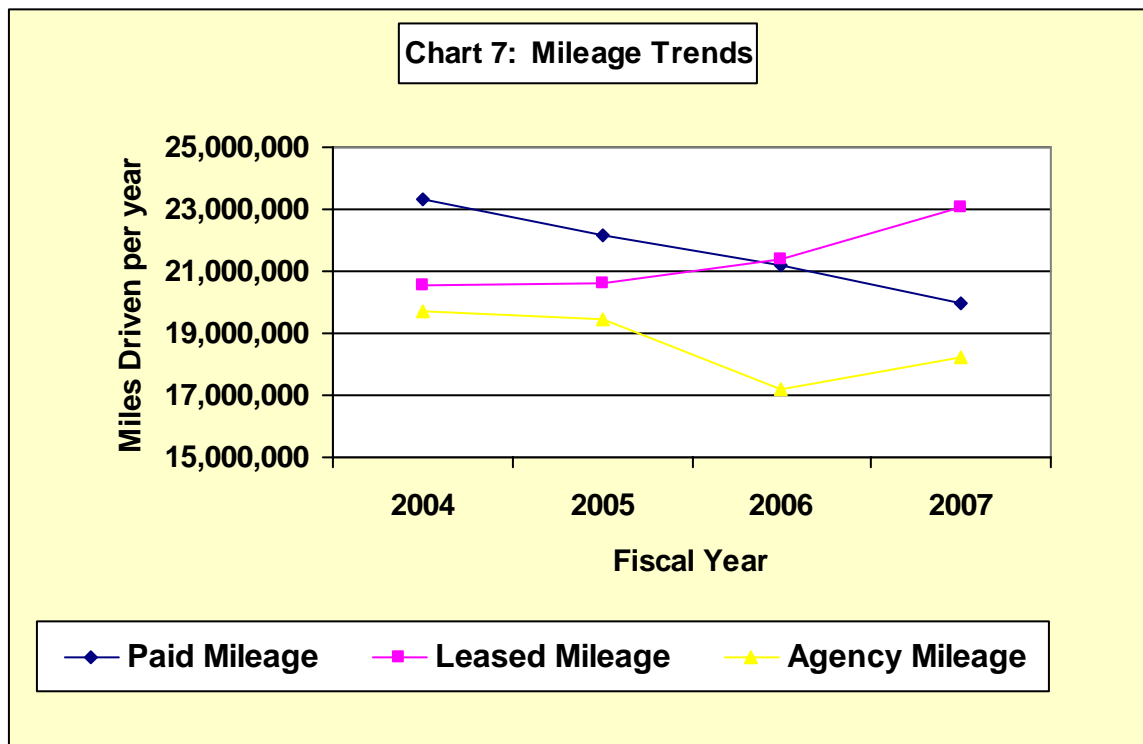
3. **Agency Mileage** - Mileage accumulated on vehicles owned by the agency.

## V. Summary of Vehicle Miles Traveled For FY 2007

Attachment C contains the detail of reported Agency VMT for 2004, 2005, 2006, and 2007. The summary of total 2007 VMT is as follows:

	<b>FY 2007</b>
Paid Mileage	19,947,924
Leased Mileage	23,080,519
Agency Mileage	18,239,620
<b>TOTAL</b>	<b>61,268,063</b>

Chart 7 illustrates the Paid Mileage, the Leased Mileage, and the Agency Mileage trends for 2004, 2005, 2006 and 2007.



As the graph shows, the Paid Mileage (mileage from people taking their personal vehicles and getting paid per mile) decreased each year while there was a steady increase in Leased Mileage. The increase in Leased Mileage is most likely due as a result of staff using leased vehicles more as they used their personal vehicles less. The Agency Mileage by (vehicles are owned and operated by the agency not CFM) decreased the first two years but increased in 2007.

In order to make a historical agency comparison, Attachment C also contains the agencies 3-year (2004, 2005, and 2006) average for comparison with 2007 VMT. The data shows that, while a number of agencies have been successful in reducing their VMT, some agencies' VMT have risen. Except for a few specific cases, it is impossible to ascertain any particular reasons for an agencies increase or decrease in VMT. However, DOT was able to explain why their Leased and Agency Mileage rose significantly in 2007.<sup>2</sup>

Chart 8 illustrates the total fleet vehicle miles traveled trend for fiscal years 2004, 2005, 2006 and 2007.

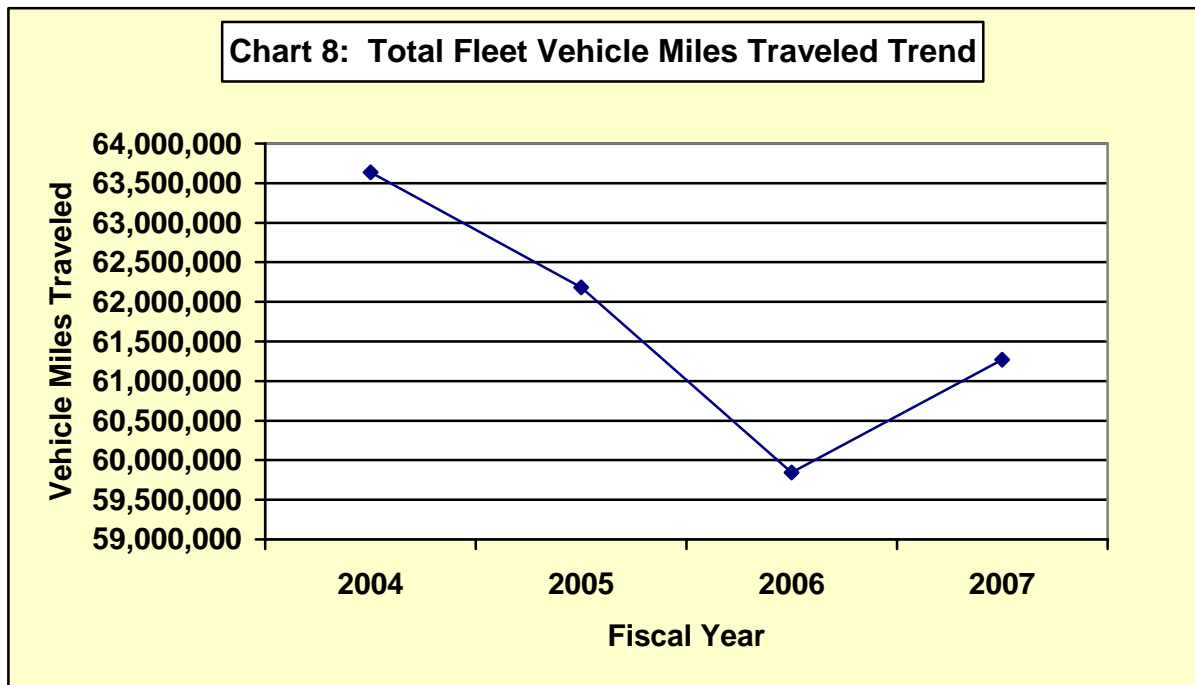


Chart 8 shows an overall decreasing trend of total state fleet VMT with the exception of 2007. In order to determine the significant of the 2007 VMT increase, the 2007 VMT was compared to the previous 3-year average. The table below depicts the 3-year average comparison. The data shows that, while 2007 VMT increased over the 2006 VMT, 2007 VMT was still 1% less than the previous 3-year average.

<sup>2</sup> The increases in DOT agency and leased mileage can be accounted for in two ways, The leased mileage increased due to a pilot program with CFM in which one of the DOT region's VMT was tracked by CFM. The increase in agency reported mileage was caused by the installation of a new Asset Management Program (Maximus MS). All DOT vehicle data was dumped into the program and adjusted to bring them up to date. This boosted the 2007 VMT by adding numbers lost in 2006. There was also a consolidation of the number of DOT regions from 7 to 5 which required more travel for some employees with assigned vehicles.

	2004	2005	2006	3-Year average	2007	% mileage increased (+) decreased (-)
Paid Mileage	23,341,816	22,130,200	21,216,479	22,229,498	19,947,924	-10.3
Leased Mileage	20,559,107	20,622,407	21,411,475	20,864,330	23,080,519	10.6
Agency Mileage	19,735,250	19,430,515	17,214,405	18,793,390	18,239,620	-2.9
	63,638,177.00	62,185,127.00	59,844,365.00	61,889,223.00	61,270,070.00	-1.0

Since the state started collecting VMT data in 2004, **the state has reduced its VMT by nearly 2.4 million miles.**

Years	VMT Difference reduced(-) increased (+)
2004-2005	-1,453,050
2005-2006	-2,340,762
2006-2007	+1,425,705
<b>TOTAL REDUCED VMT</b>	<b>-2,368,107</b>

## ATTACHMENT A

### Emissions Profile.

The table below shows the various emission standards for non methane organic gases (NMOG), or hydrocarbons, for both the vehicles replaced and the vehicles they are replaced by.

<b>Classification</b>	<b>Standard NMOG (grams per mile)</b>
Federal Tier 0	0.8
Federal Tier 1	0.25
National Low Emission Vehicle/ Tier 2	0.075
B-4	0.07
B-5	0.075
B-7	0.075
B-8	0.125
B-9	0.075
B-10	0.125
Transitional Low Emission Vehicle	0.125
Low Emission Vehicle	0.075
Ultra Low Emission Vehicle	0.04
Super Ultra Low Emission Vehicle	0.01
Partial Zero Emission Vehicle	0.0085
Zero Emission Vehicle	0.0

Benefits of cleaner vehicles are not only in hydrocarbon reductions but also in nitrogen oxides and air toxics.

### Emission Profile Data from Central Fleet Management

Profile Improved					
2004	2005	2006	2007	Vehicle Replaced	Replaced By
15	53	11	28	Tier 1	LEV/LEV2
20	23	23	22	Tier 1	ULEV/ULEVII
26	3	41	2	Tier 1	SULEV
4	9	1	4	Tier 1	PZEV
0	0	1	2	NLEV	ULEVII
0	0	0	7	NLEV	PZEV
10	10	34	16	LEV	ULEV/ULEVII
2	1	9	6	LEV	SULEV
7	12	12	15	LEV	PZEV
1	0	12	1	ULEV	SULEV
1	4	2	2	ULEV	PZEV
0	0	1	0	SULEV	PZEV

Profile Remained the Same					
2004	2005	2006	2007	Vehicle Replaced	Replaced By
0	0	0	5	NLEV	LEV
17	34	27	32	LEV	LEV/LEVII
0	15	1	11	ULEV	ULEV
0	0	1	2	SULEV	SULEV

Profile Declined					
2004	2005	2006	2007	Vehicle Replaced	Replaced By
3	1	4	3	ULEV	LEV
0	0	0	3	SULEV	LEV
0	0	1	2	SULEV	ULEV
0	0	0	2	PZEV	LEV
0					

No Original Emission Profile				
2004	2005	2006	2007	Vehicle Replaced
9	0	0	0	LEV
30	0	0	0	ULEV
17	0	0	0	SULEV
2	0	0	0	Diesels

New Vehicles (No Replacement)					
2004	2005	2006	2007		
6	8	29	38	LEV/LEVII	
18	0	3	4	ULEV	
0	0	3	0	SULEV	
0	15	16	13	PZEV	

### Emission Profile Data from Department of Public Safety

Profile Improved					
2004	2005	2006	2007	Vehicle Replaced	Replaced by
26	4	0	14	Tier 1	LEV/LEVII
6	2	1	0	Tier 1	ULEV
0	2	0	0	Tier 1	PZEV
0	0	1	1	Tier 1	B4
0	1	5	0	Tier 1	B5
0	0	5	0	Tier 1	B7
0	1	0	0	Tier 1	B9
0	0	0	1	B10	B4
0	0	1	0	B10	B5
0	0	1	0	B10	B7
0	0	0	7	B10	LEV
0	0	1	0	LEV	B4
51	4	8	0	LEV	ULEV/ULEVII
0	2	0	0	LEV	PZEV
0	0	6	0	B7	ULEV/ULEVII
0	1	0	1	B8	LEV/LEVII

Profile Remained the Same					
2004	2005	2006	2007	Vehicle Replaced	Replaced By
9	61	0	36	LEV	LEV
8	0	0	0	ULEV	ULEV
0	0	0	1	B7	B4
0	0	7	1	B7	B5
0	0	15	1	LEV	B5
0	0	14	0	B7	B7
0	0	27	0	LEV	B7
0	4	0	34	B7	LEVII
0			4	B7	Tier-2

Profile Declined					
2004	2005	2006	2007	Vehicle Replaced	Replaced By
0	0	1	0	ULEV	B4
0	0	0	2	B7	B8

No Replacement Emission Profile					
2004	2005	2006	2007	Vehicle Replaced	Replaced By
0	0	0	1	B10	Unknown
0	0	0	7	B7	Unknown
0	0	0	3	LEV	Unknown
0	0	0	1	T-1	Unknown

### Emission Profile Data from Department of Transportation (DOT)

Profile Improved					
2004	2005	2006	2007	Vehicle Replaced	Replaced By
0	45	0	0	Tier 0, Tier1, TLEV	51 LEVII, ULEVI< SULEV< PZEV
0	0	0	77	Ti-1	LEV
0	0	6	11	LEV	ULEV
0	0	26	15	LEV	SULEV
0	0	1	0	LEV	PZEV

Profile Remained the Same					
2004	2005	2006	2007	Vehicle Replaced	Replaced By
0	0	78	0	LEV	LEV/LEVII

New Vehicles (no replacement)					
2004	2005	2006	2007		
0	2	0	0	PZEV	

## ATTACHMENT B

### Fuel Economy Data

#### A. Central Fleet Management

##### (1) Improved Vehicle Fuel Economy Compared to Vehicle Replaced

MPG	+1	+2	+3	+4	+5	+6	+7	+8	+9	+11	+12	+14
# Vehicles 2004	8	40	18	9	1	3	2	0	0	0	0	0
# Vehicles 2005	27	16	27	6	3	5	0	0	0	0	1	1
# Vehicles 2006	31	33	10	5	8	3	1	1	2	1	0	1
# Vehicles 2007	25	39	22	8	18	6	3	2	0	0	1	1

MPG	+15	+16	+17	+18	+19	+20	+21	+22	+24	+25
# Vehicles 2004	0	0	3	3	3	1	1	0	1	0
# Vehicles 2005	0	0	2	0	1	2	0	4	0	0
# Vehicles 2006	0	1	0	0	3	0	2	4	0	0
# Vehicles 2007	0	0	0	1	2	0	2	2	0	0

MPG	+26	+27	+35	Total
# Vehicles 2004	0	0	0	93
# Vehicles 2005	0	0	1	96
# Vehicles 2006	0	0	0	104
# Vehicles 2007	1	1	0	134

##### (2) Decreased Fuel Economy Compared to Vehicle Replaced

MPG	-1	-2	-3	-4	-5	-6	-7	-8	-11	-12
# Vehicles 2004	5	12	0	1	0	2	1	0	0	0
# Vehicles 2005	11	3	2	0	0	0	0	0	0	0
# Vehicles 2006	2	12	3	0	0	0	1	1	1	0
# Vehicles 2007	4	2	2	3	0	0	0	0	2	0

MPG	-13	-14	Total
# Vehicles 2004	0	0	21
# Vehicles 2005	0	0	16
# Vehicles 2006	0	1	21
# Vehicles 2007	0	0	13

##### (3) No Improved Fuel Economy

MPG	Totals
# Vehicles 2004	17
# Vehicles 2005	21
# Vehicles 2006	22
# Vehicles 2007	13

**(4) Undetermined Fuel Economy**

MPG	Totals
# Vehicles 2004	33
# Vehicles 2005	36
# Vehicles 2006	34
# Vehicles 2007	5

**(5) New Vehicles Purchased (not as replacements)**

MPG	Totals
# Vehicles 2004	24
# Vehicles 2005	22
# Vehicles 2006	51
# Vehicles 2007	55

**B. Department of Public Safety**

**(1) Improved Vehicle Fuel Economy**

MPG	+1	+2	+3	+4	+5	+6	+7	+8	+21	Total
# Vehicles 2004	15	0	62	0	0	0	0	6	0	83
# Vehicles 2005	1	2	37	4	1	0	23	0	1	69
# Vehicles 2006	0	1	21	0	6	2	6	3	0	39
# Vehicles 2007	0	4	13	0	0	3	2	0	0	22

**(2) Decreased Fuel Economy**

MPG	-1	-2	-3	-4	-5	-7	Total
# Vehicles 2004	3	0	0	0	0	0	3
# Vehicles 2005	3	0	0	0	0	0	3
# Vehicles 2006	0	4	0	4	16	0	24
# Vehicles 2007	0	3	1	11	16	1	32

**(3) No improved Fuel Economy**

MPG	Totals
# Vehicles 2004	0
# Vehicles 2005	6
# Vehicles 2006	25
# Vehicles 2007	34

**(4) Undetermined Fuel Economy**

MPG	Totals
# Vehicles 2004	14
# Vehicles 2005	9
# Vehicles 2006	5
# Vehicles 2007	27

**(5) New Vehicles Purchased (not as replacements)**

MPG	Totals
# Vehicles 2004	0
# Vehicles 2005	0
# Vehicles 2006	0
# Vehicles 2007	0

**C. Department of Transportation**

**(1) Improved Vehicle Fuel Economy**

MPG	+2	+3	+4	+14	+23	38	Totals
# Vehicles 2004	0	0	0	0	0	0	0
# Vehicles 2005	0	3	3	0	0	0	6
# Vehicles 2006	1	0	3	0	0	1	5
# Vehicles 2007	1	3	0	8	7	0	19

**(2) Decreased Fuel Economy**

MPG	-1	-2	-3	-4	-7	-8	-13	Totals
# Vehicles 2004	0	0	0	0	0	0	0	0
# Vehicles 2005	4	4		2		3	9	22
# Vehicles 2006	0	3	3	0	2	0	0	8
# Vehicles 2007	0	1	0	0	0	2	0	3

**(3) No improved Fuel Economy**

MPG	Total
# Vehicles 2004	0
# Vehicles 2005	0
# Vehicles 2006	0
# Vehicles 2007	0

**(4) Undetermined Fuel Economy**

MPG	Total
# Vehicles 2004	0
# Vehicles 2005	23
# Vehicles 2006	98
# Vehicles 2007	81

**(5) New Vehicles Purchased (not as replacements)**

MPG	Total
# Vehicles 2004	0
# Vehicles 2005	2
# Vehicles 2006	0
# Vehicles 2007	0

## D. Department of Agriculture

### (1) Improved Vehicle Fuel Economy

MPG	Total
# Vehicles 2004	0
# Vehicles 2005	0
# Vehicles 2006	0
# Vehicles 2007	0

### (2) Decreased Fuel Economy

MPG	Total
# Vehicles 2004	0
# Vehicles 2005	0
# Vehicles 2006	0
# Vehicles 2007	0

### (3) No Improved Fuel Economy

MPG	Total
# Vehicles 2004	0
# Vehicles 2005	0
# Vehicles 2006	0
# Vehicles 2007	0

### (4) Undetermined Fuel Economy

MPG	Total
# Vehicles 2004	
# Vehicles 2005	0
# Vehicles 2006	0
# Vehicles 2007	1

### (5) New Vehicles Purchased (not as replacements)

MPG	Total
# Vehicles 2004	0
# Vehicles 2005	0
# Vehicles 2006	0
# Vehicles 2007	0

# ATTACHMENT C

## A. Paid Mileage by Agency

Agency	Paid Mileage					
	2004	2005	2006	3 yr Ave.	2007	% mileage increased (+) decreased (-)
Administrative & Financial Services	541,224	561,879	586,855	563,319	615,560	9.27
Agriculture	313,693	311,119	259,220	294,677	271,468	-7.88
Arts Commission				0		
Attorney General	253,090	254,664	257,252	255,002	241,668	-5.23
Audit	5,354	8,864	11,867	8,695	2,263	-73.97
Behavioral & Developmental Services			2,281,590	2,281,590		N/A
Board of Licensure in Medicine				0		
Conservation	175,815	148,652	134,264	152,910	119,665	-21.74
Corrections	1,196,197	1,310,760	1,104,470	1,203,809	818,998	-31.97
Courts	1,309,775		1,323,317	877,697	1,391,325	58.52
Dairy Council				0		
Defense				0		
Eastern Maine Community College				0		
Economic & Community Development	99,235	86,619	85,193	90,349	75,589	-16.34
Education	416,010	401,997	316,254	378,087	322,244	-14.77
Environmental Protection	136,849	131,378	112,126	126,784	69,767	-44.97
Executive	73,108	88,556	73,663	78,442	67,315	-14.19
Finance Authority of Maine				0		
Historic Preservation				0		
Health & Human Services	9,637,190	8,903,199	5,950,974	8,163,788	8,206,575	0.52
Inland Fisheries & Wildlife	129,109	138,414	135,067	402,590	130,884	-67.49
Judicial	1,309,775	1,272,428		1,291,102		N/A
Kennebec Valley Community College				0		
Labor	1,525,517	1,508,761	1,422,732	1,485,670	1,216,862	-18.09
Law Library		514	785	433	1,254	189.61
Legislature	261,827	177,449	254,039	231,105	207,752	-10.10
Library	710			710		N/A
Lobster Promotion				0		
Maine Health Data Organization				0		
Maine School of Science & Math				0		
Maine State Housing Authority				0		
Marine Resources	60,701	25,665	25,834	37,400	35,676	-4.61
Military	95,194	64,428	73,877	77,833	76,824	-1.30
Museum				0		
Muskie School				0		
Northern Maine Community College				0		
Professional & Financial Regulation	428,801	399,679	455,710	428,063	458,570	7.13
Public Safety	32,279	52,440	34,650	39,790	18,804	-52.74
Agency	Paid Mileage					

	2004	2005	2006	3 yr Ave.	2007	% mileage increased (+) decreased (-)
Public Utilities	74,493	61,548	62,432	66,158	62,713	-5.21
Quasi State Agencies, Boards, Misc.	328,068	344,659	372,754	348,494	304,672	-12.57
Salmon Commission				0		
Secretary of State	100,504	87,213	52,114	79,944	87,837	9.87
Southern Maine Community College				0		
Transportation	6,146,221	5,788,282	5,826,111	5,920,205	5,142,819	-13.13
Treasury	852	1,033	3,326	1,737	819	-52.85
University of Maine, Augusta				0		
University of Southern Maine				0		
Washington Count Community College				0		
Workers Compensation				0		
<b>Totals</b>	<b>23,341,816</b>	<b>22,130,200</b>	<b>21,216,479</b>	<b>22,229,498</b>	<b>19,947,924</b>	<b>-10.26</b>

## B. Leased/ Controlled Vehicle Mileage

<i>Agency</i>	<i>Leased Mileage</i>					
	2004	2005	2006	3 yr Ave	2007	% mileage increased (+) decreased (-)
Administrative & Financial Services	834,434	812,844	803,573	816,950	802,409	-1.78
Agriculture	1,238,039	1,314,336	1,210,670	1,254,348	1,141,145	-9.02
Arts Commission	96	2,200	1,408	1,235	1,800	45.79
Attorney General	336,010	302,648	339,173	325,944	357,382	9.65
Audit	11,956	8,946	2,286	7,729	2,160	-72.10
Baxter School		0	0	0	99,350	
Behavioral & Developmental Services	488,821	524,670	550,691	521,394	501,540	-3.81
Board of Licensure in Medicine	12,811	913	3,107	5,610	11,060	97.14
Conservation	3,870,859	3,887,873	3,812,987	3,857,240	3,787,810	-1.80
Corrections	1,006,577	978,600	1,136,212	1,040,463	1,615,297	55.25
Dairy Council	558	10,656	13,692	8,302	11,350	36.71
Defense	346,165	389,361	452,017	395,848	377,949	-4.52
Eastern Maine Community College	46,307	39,258	40,569	42,045	31,953	-24.00
Economic & Community Development	61,137	52,535	53,197	55,623	58,705	5.54
Education	197,658	201,768	222,109	207,178	107,047	-48.33
Environmental Protection	1,810,710	1,769,677	1,832,414	1,804,267	1,832,600	1.57
Executive	92,472	87,837	93,324	91,211	95,549	4.76
Finance Authority of Maine	29,283	22,309	28,853	26,815	28,061	4.65
Health & Human Services	945,242	1,101,225	874,506	973,658	971,686	-0.20
Historic Preservation	3,958	1,102	2,053	2,371	4,027	69.84
Inland Fisheries & Wildlife	4,464,179	4,114,116	4,018,320	4,198,872	3,959,092	-5.71
Judicial	168	6,312	11,251	5,910	25,545	332.21
<i>Agency</i>	<i>Leased Mileage</i>					

	2004	2005	2006	3 yr Ave	2007	% mileage increased (+) decreased (-)
Kennebec Valley Community College	440	471	454	455	460	1.10
Labor	186,677	181,946	346,683	238,435	354,054	48.49
Law Library				0		
Legislature	6,762	7,321	6,210	6,764	7,520	11.17
Library	6,606	1,636	935	3,059	1,190	-61.10
Lobster Promotion	1,287	328		808	0	N/A
Military	346,165	393,099		369,632	0	N/A
Maine Health Data Organization	270	503	888	554	1,432	158.64
Maine School of Science & Math	25,310	68,878	69,135	54,441	69,923	28.44
Maine State Housing Authority	229,079	227,595	240,146	232,273	234,559	0.98
Marine Resources	1,748,187	1,708,011	1,782,376	1,746,191	1,771,392	1.44
Museum	7,054	8,645	1,110	5,603	7,165	27.88
Muskier School	19,260	8,569	6,146	11,325	12,446	9.90
Northern Maine Community College	26,171	19,472	24,011	23,218	20,611	-11.23
Professional & Financial Regulation	597,414	552,261	505,377	551,684	556,853	0.94
Public Safety	964,941	1,171,726	1,378,308	1,171,658	1,393,741	18.95
Public Utilities	51,217	50,387	48,362	49,989	73,277	46.59
Quasi State Agencies, Boards, Misc.				0		
Salmon Commission	174,079	191,709	175,312	180,367	167,072	-7.37
Secretary of State	1,059,606	1,107,694	1,130,170	1,099,157	1,099,474	0.03
Southern Maine Community College	51,450	70,368	85,749	69,189	123,552	78.57
Transportation	47,281	80,624	55,315	61,073	1,293,552	2018.03
Treasury		13		13	0	N/A
University of Maine, Augusta	4,073	1,157	14,231	6,487	16,738	158.02
University of Southern Maine	14,283	17,577	8,716	13,525	17,532	29.62
Washington Count Community College	28,920	35,926	27,081	30,642	28,480	-7.06
Workers Compensation	121	1,336	2,348	1,268	4,027	217.50
<b>Totals</b>	<b>20,559,107</b>	<b>20,622,407</b>	<b>21,411,475</b>	<b>20,864,330</b>	<b>23,080,519</b>	<b>10.62</b>

### C. Agency Owned Vehicle Mileage

Agency	Agency Owned Vehicle Mileage					
	2004	2005	2006	3 yr Ave	2007	% mileage increased (+) decreased (-)
Administrative & Financial Services	11,136	14,933	14,672	13,580	15,096	11.16
Agriculture	27,177	20,577	29,467	25,740	27,692	7.58
Arts Commission				0		
Attorney General				0		
Audit				0		
Board of Licensure in Medicine				0		
Conservation			15,290	5,097	12,913	153.36
Corrections	44,780	19,832	18,912	27,841	42,901	54.09
Dairy Council				0		
Defense, Veterans & Emergency Mgmt			14,700	14,700	52,639	258.09
Eastern Maine Community College				0		
Economic & Community Development				0		
Education				0		
Environmental Protection				0		
Executive				0		
Finance Authority of Maine				0		
Historic Preservation				0		
Human Services			25,625	25,625	15,429	-39.79
Inland Fisheries & Wildlife	179,953	190,125	183,570	184,549	157,125	-14.86
Judicial				0		
Kennebec Valley Community College				0		
Labor				0		
Law Library				0		
Legislature				0		
Library	3,448	3,627	3,751	3,609	3,683	2.06
Lobster Promotion				0		
Military Authority				0		
Maine Health Data Organization				0		
Maine School of Science & Math				0		
Maine State Housing Authority				0		
Marine Resources	10,582	8,744	6,891	8,739	11,797	34.99
Military				0		
Museum				0		
Muskie School				0		
Northern Maine Community College				0		
Professional & Financial Regulation				0		
Public Safety	11,496,167	10,942,911	10,159,787	10,866,288	9,026,536	-16.93
Public Utilities				0		
<b>Agency</b>	<b>Agency Owned Vehicle Mileage</b>					

	2004	2005	2006	3 yr Ave	2007	% mileage increased (+) decreased (-)
Quasi State Agencies, Boards, Misc.				0		
Salmon Commission				0		
Secretary of State				0		
Southern Maine Community College				0		
Transportation	7,962,007	8,229,766	6,741,740	7,644,504	8,960,532	17.22
Treasury				0		
University of Maine, Augusta				0		
University of Southern Maine				0		
Washington Count Community College				0		
Workers Compensation				0		
<b>Totals</b>	<b>19,735,250</b>	<b>19,430,515</b>	<b>17,214,405</b>	<b>18,793,390</b>	<b>18,239,620</b>	<b>-2.95</b>