

THE ECONOMICS AND DEMOGRAPHICS OF MAINE

PPM 611: Economics and Public Policy
Muskie School of Public Service

September 11, 2019

Amanda Rector

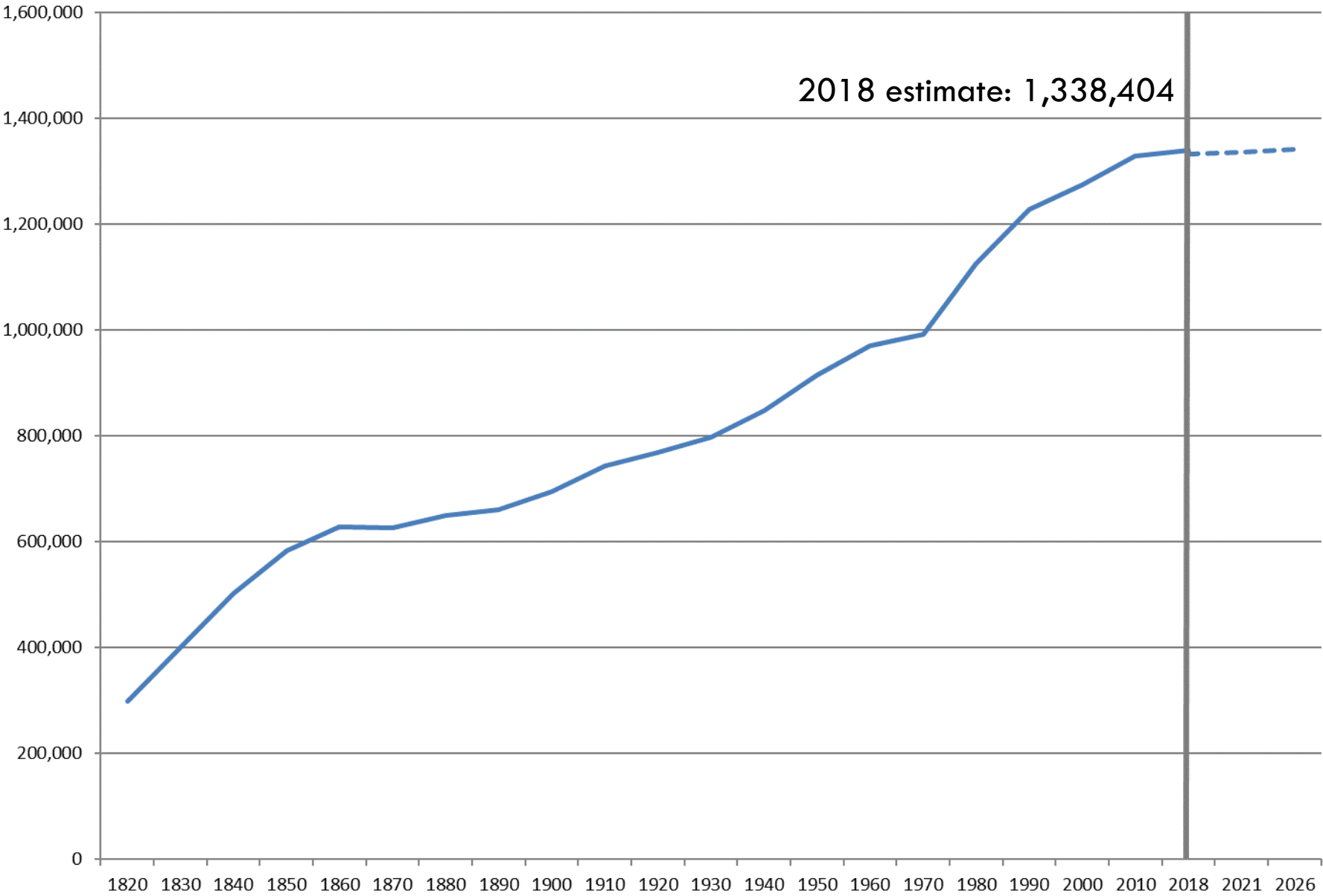
Maine State Economist

Department of Administrative and Financial Services

Demographics



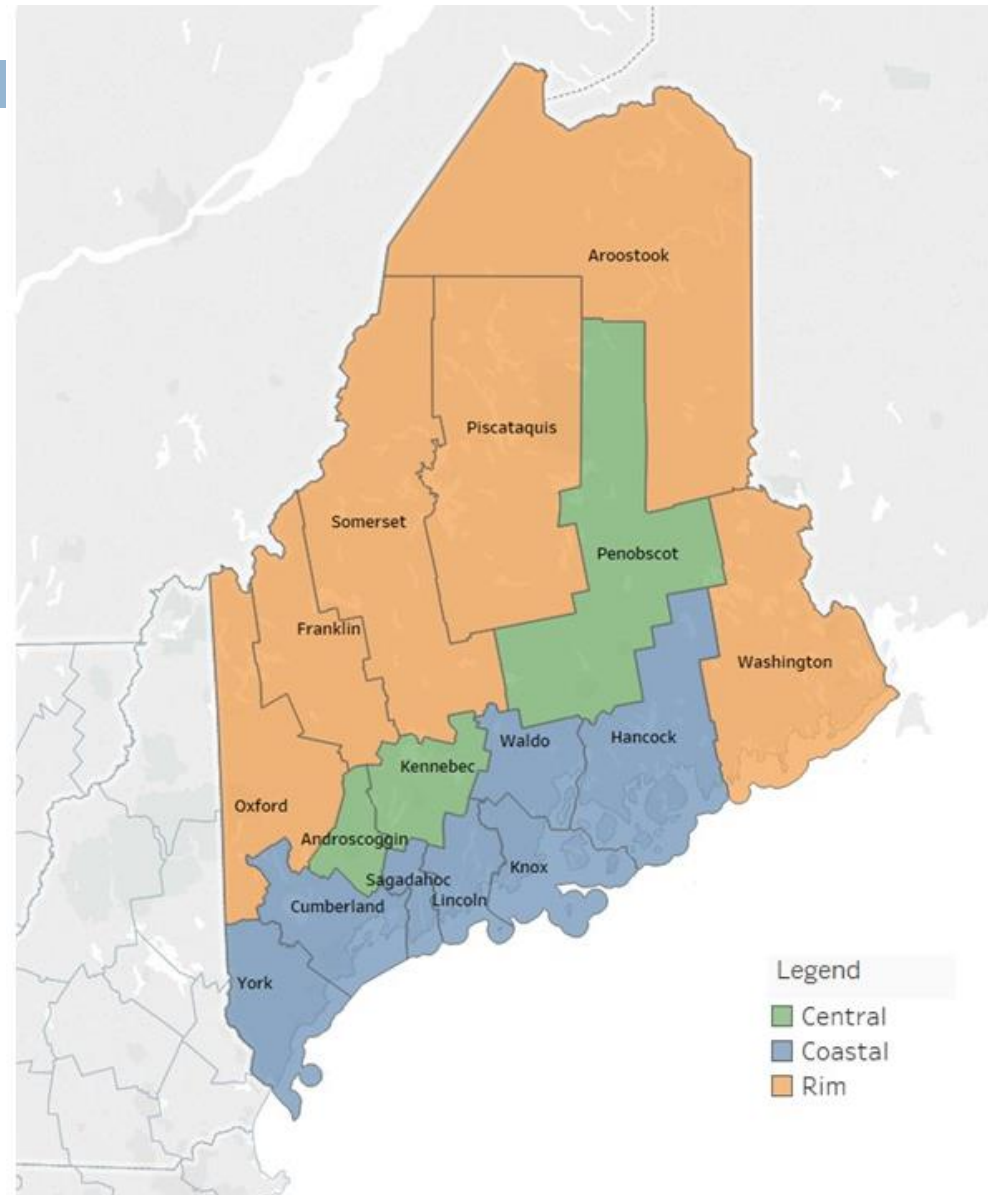
Total Population, Maine



Regions of Maine

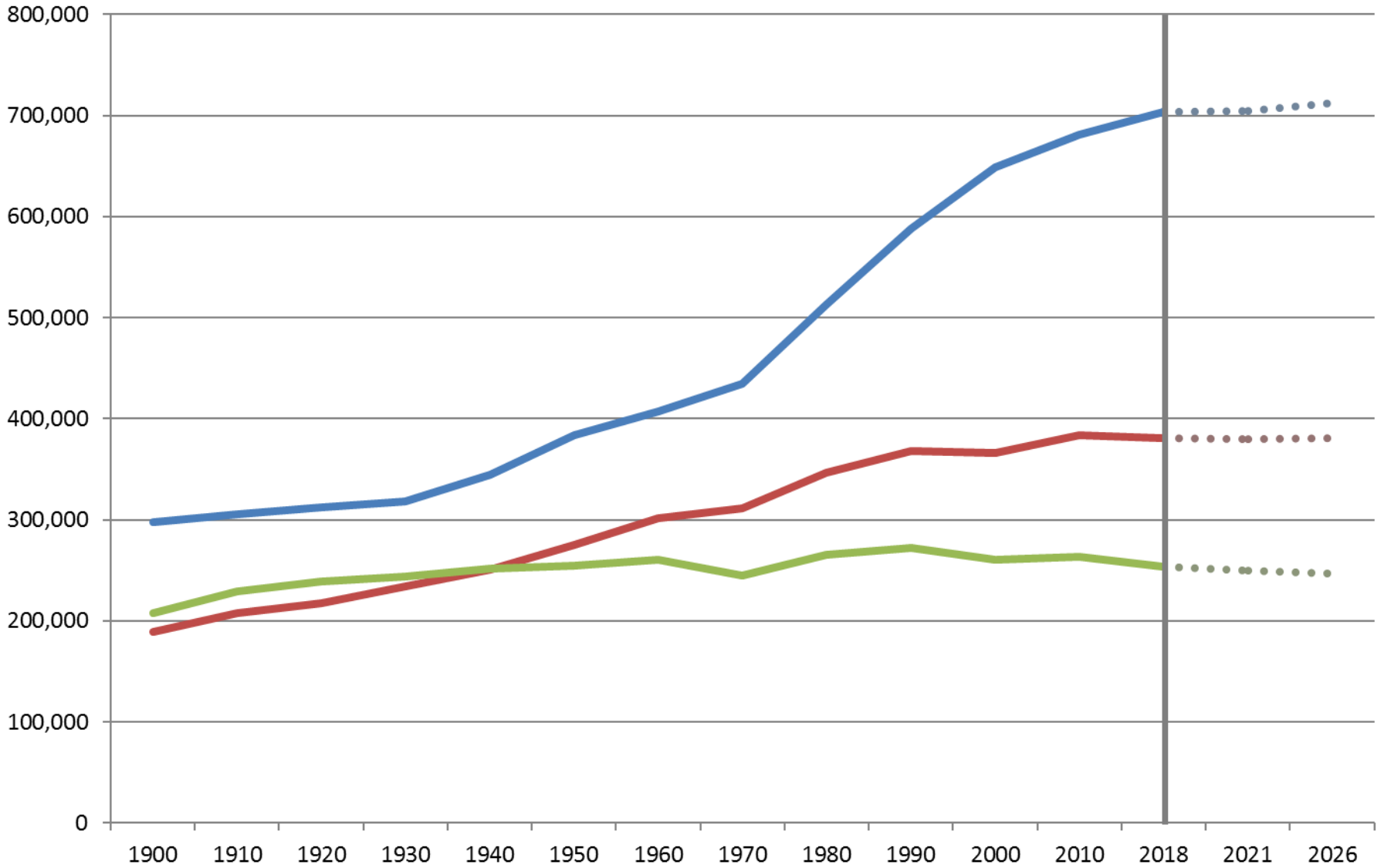
4

- Three counties had peak decennial population in a year other than 2010:
 - Aroostook: 1960
 - Piscataquis: 1920
 - Washington: 1900



Total Population, Regions of Maine

Coastal Central Rim



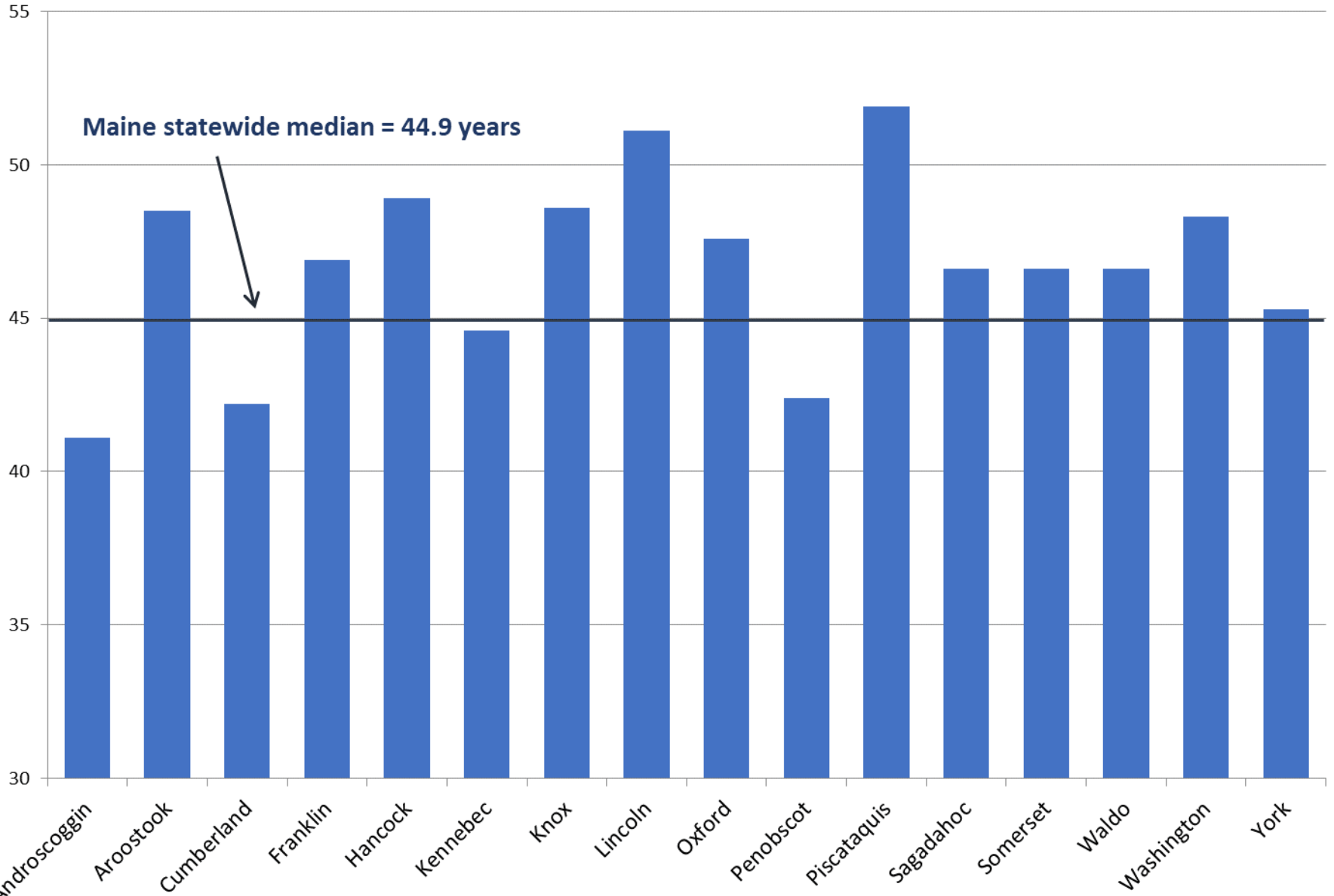
Maine: A Demographic Snapshot

6

- 2018 Population Estimate: 1,338,404
 - 42nd largest in US
- 2010 – 2018 Population Change: +0.8%
 - 42nd in US (ahead of WV, IL, CT, VT, RI, MS, NY, PA)
- 2018 Median age: 44.9 years
 - Oldest in US
- 93.1% White, Non-Hispanic
 - Highest percentage in US

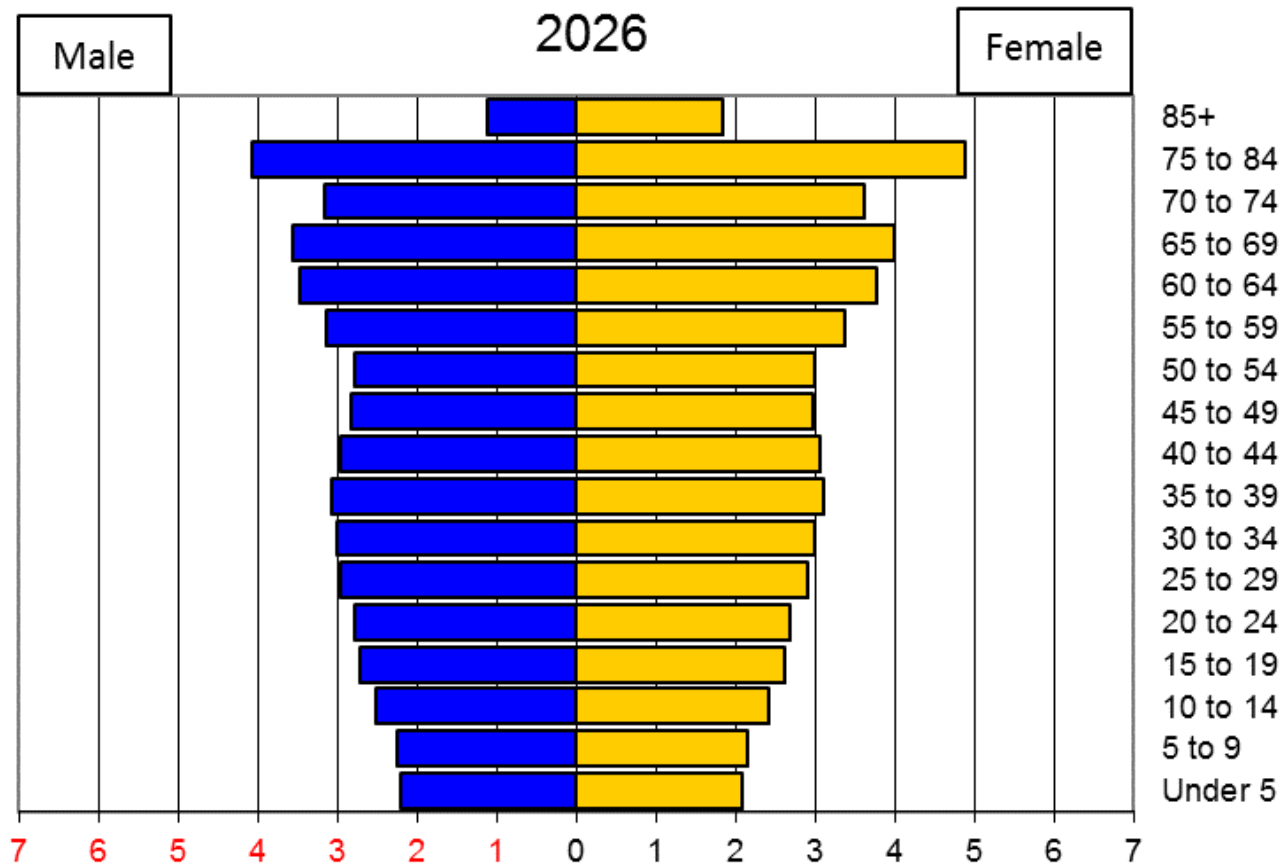


Median Age

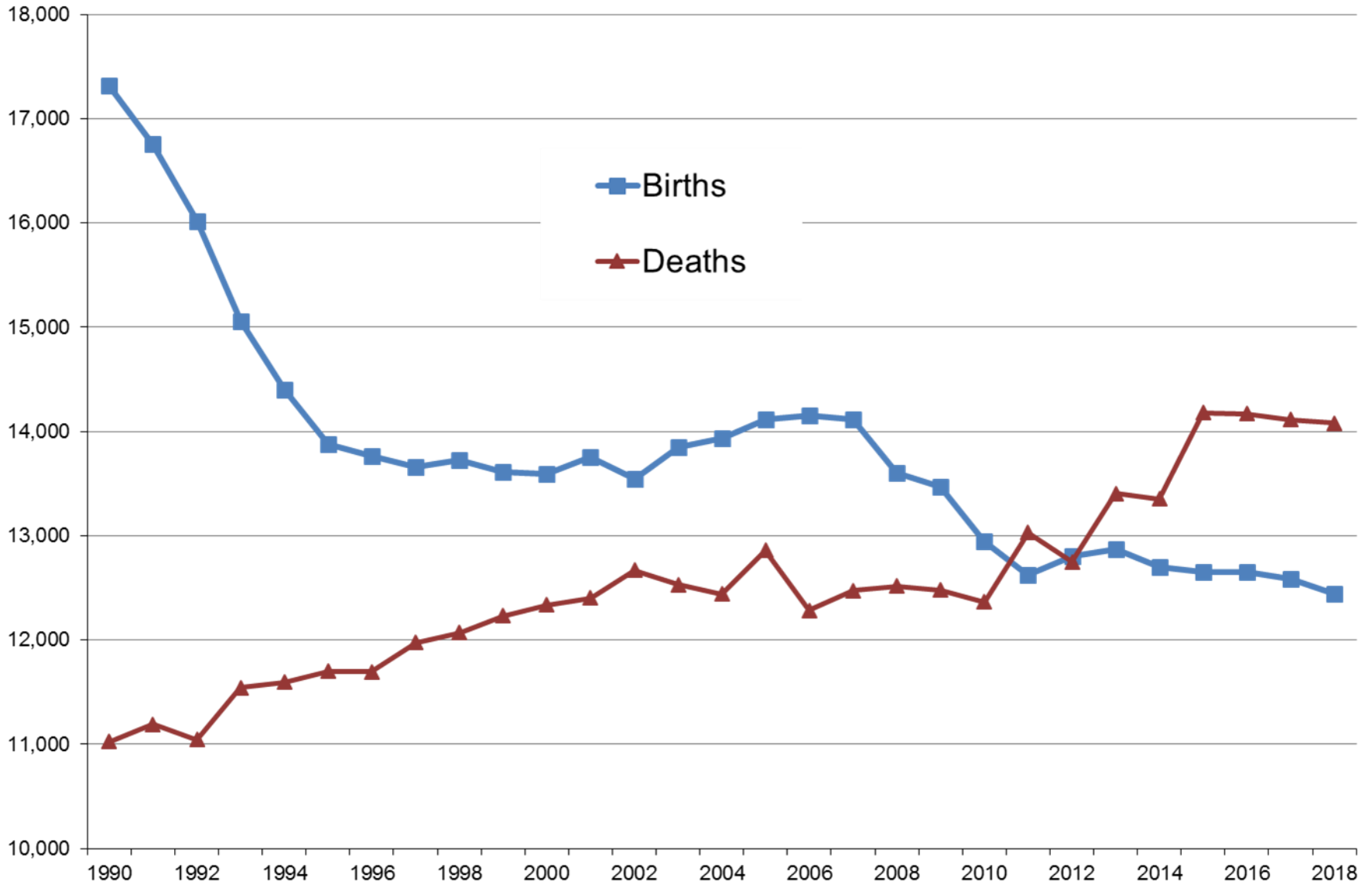


The Baby Boom Wave

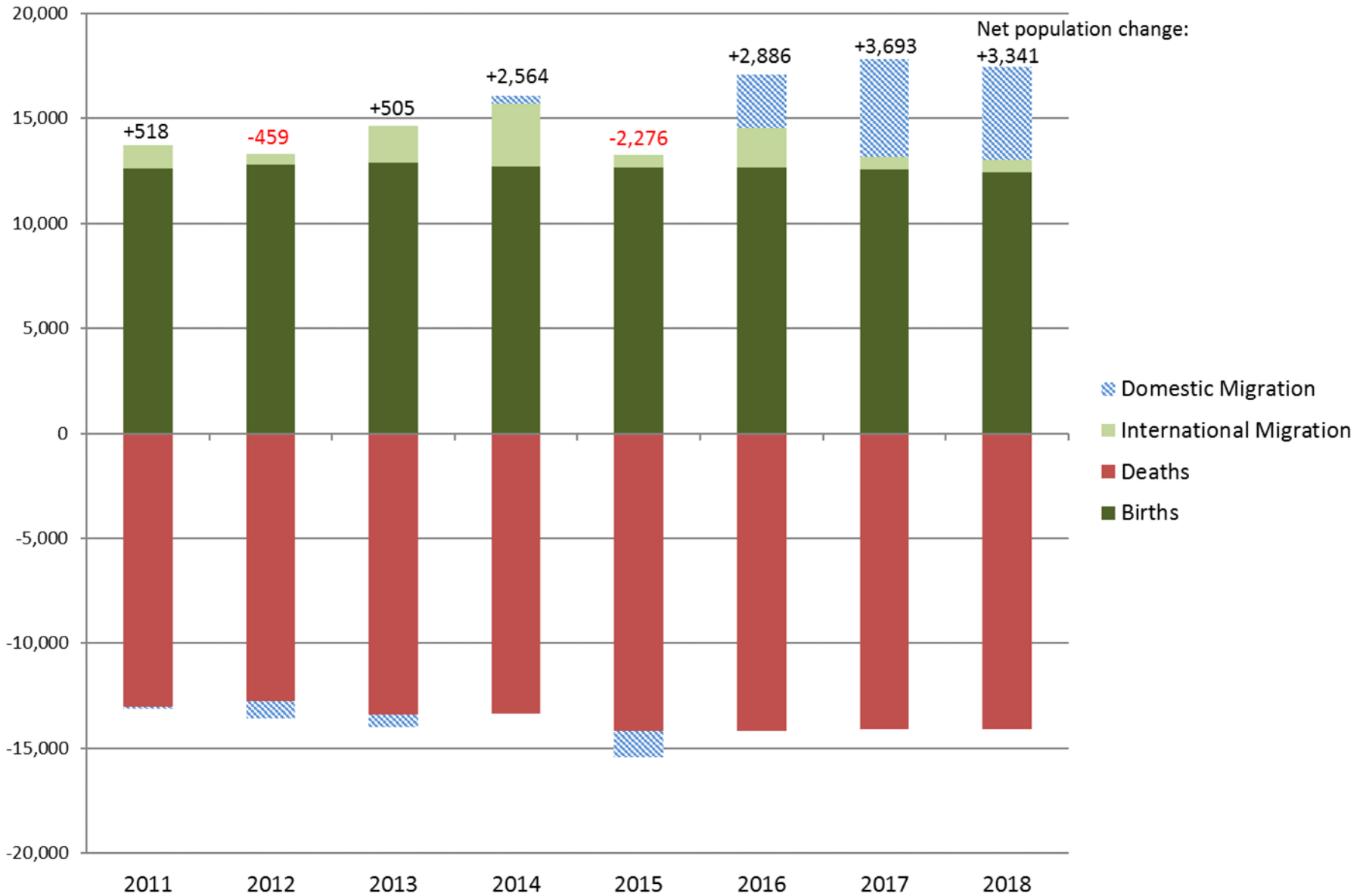
8



Births and Deaths per year in Maine



Components of Population Change, Maine

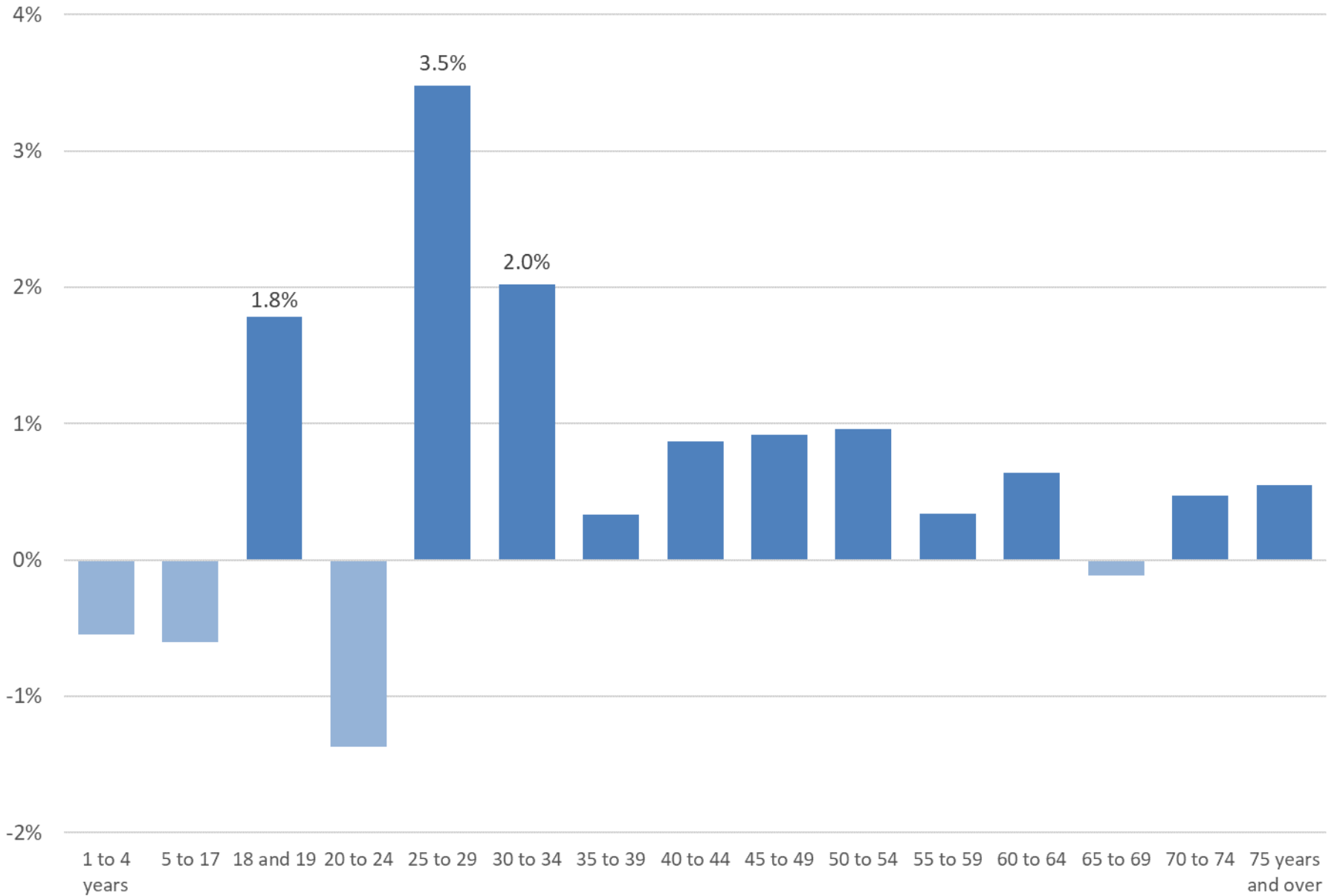


Where are people moving to/from?

11

2017 State-to-State Migration Patterns			
<i>Moved to Maine from:</i>		<i>Moved from Maine to:</i>	
Massachusetts	7,567	Massachusetts	4,099
New Hampshire	4,274	New Hampshire	3,950
Florida	3,059	Florida	2,960
New York	2,478	California	2,578
Connecticut	1,690	New York	1,611
Pennsylvania	1,629	Pennsylvania	1,156
California	1,578	Virginia	1,135
Georgia	1,241	North Carolina	1,014
Virginia	1,162	Wisconsin	904
North Carolina	1,074	Texas	648

Annual Domestic Migration Rate by Age, 2017



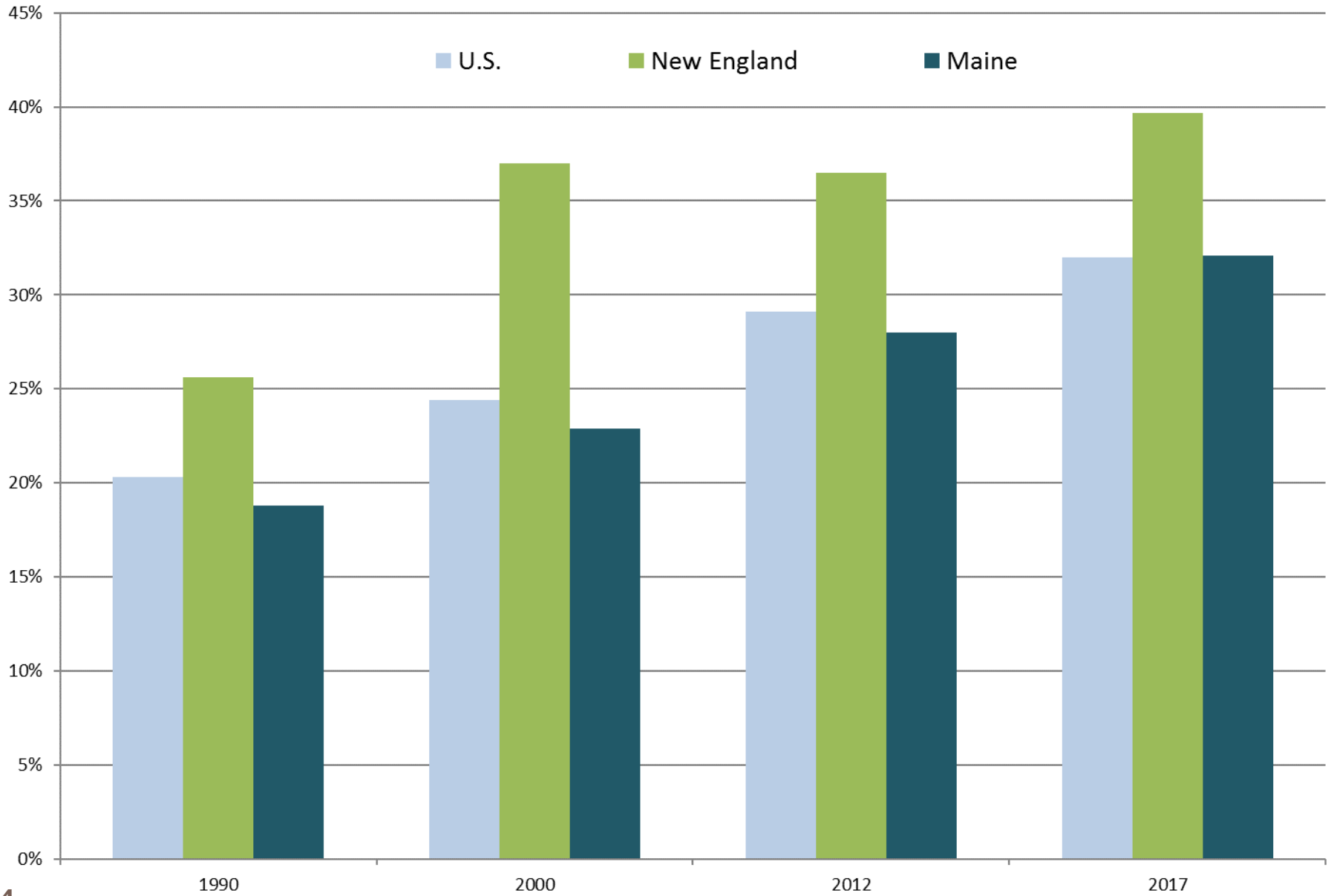
Who are the people moving to Maine?

13

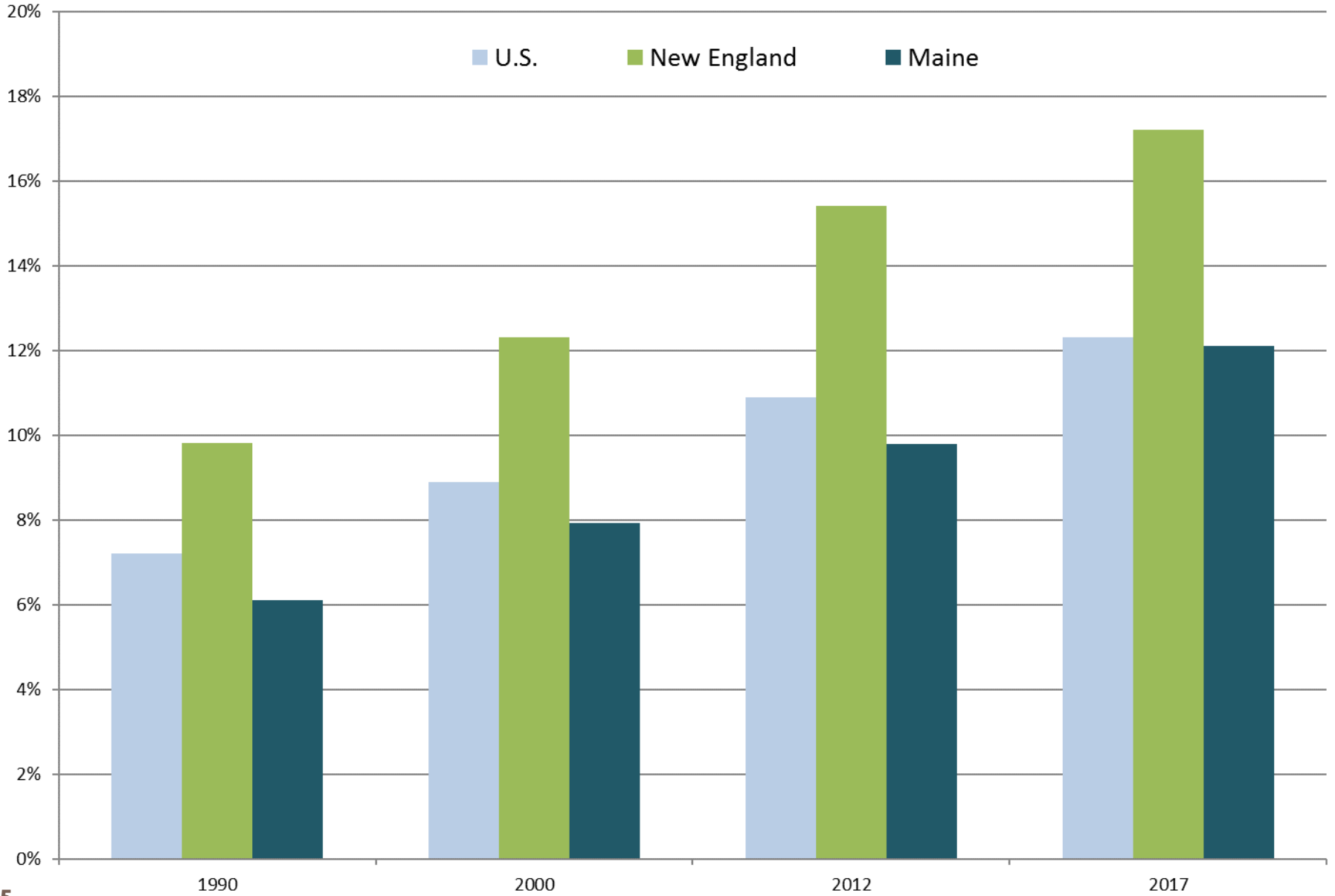
□ Educational attainment

- High School Graduate: net gain of 457
- Some College or Associate's: +2,555
- Bachelor's Degree: +2,966
- Graduate or Professional Degree: +1,896

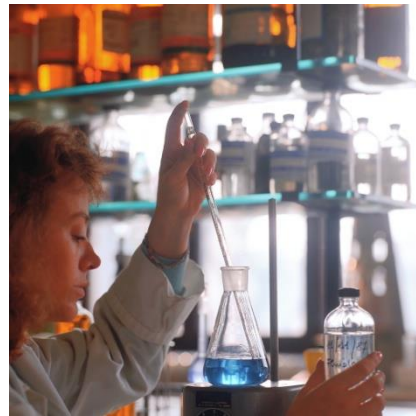
Percent of Population Age 25+ with a Bachelor's Degree or Higher



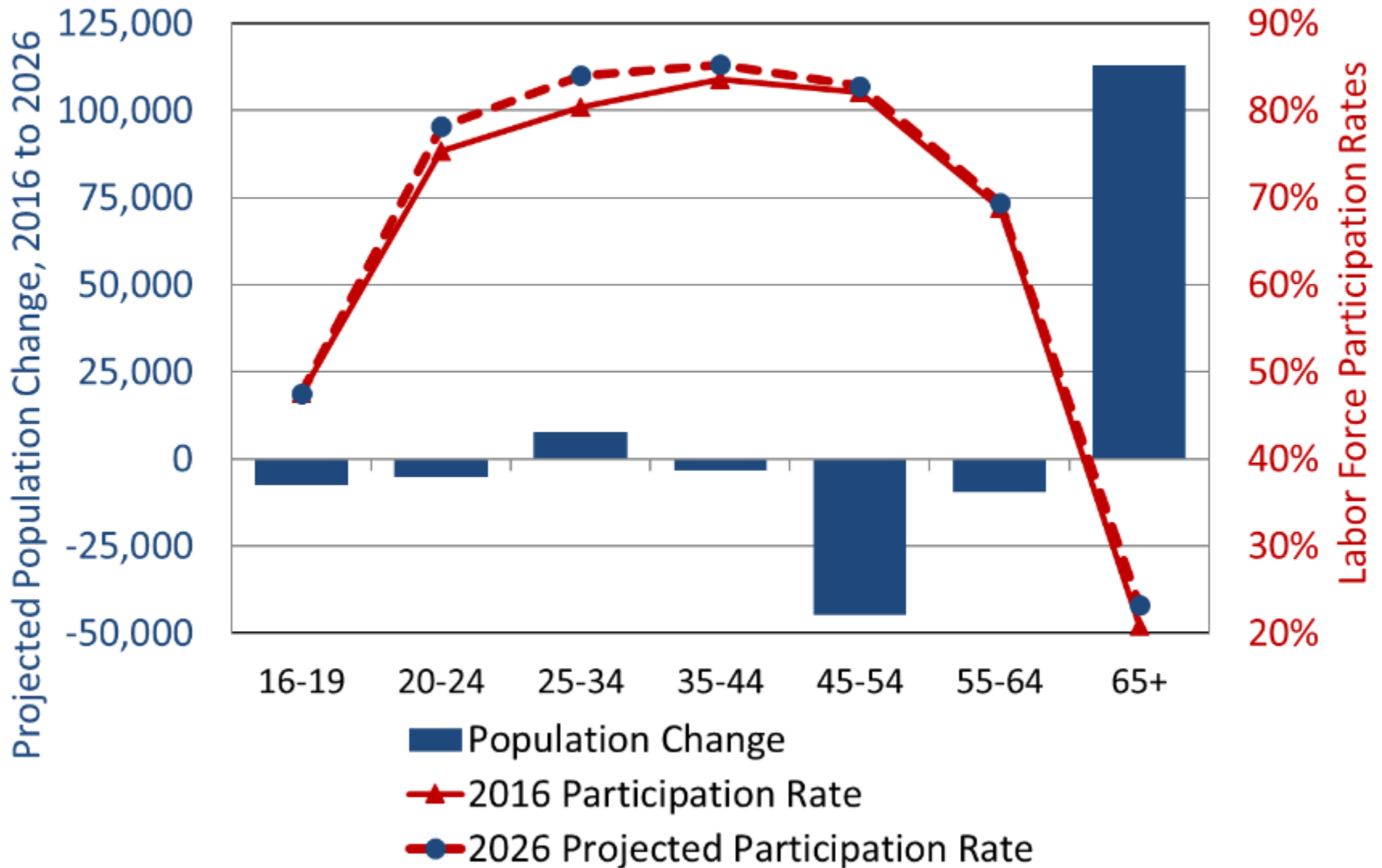
Percent of Population Age 25+ with a Graduate or Professional Degree



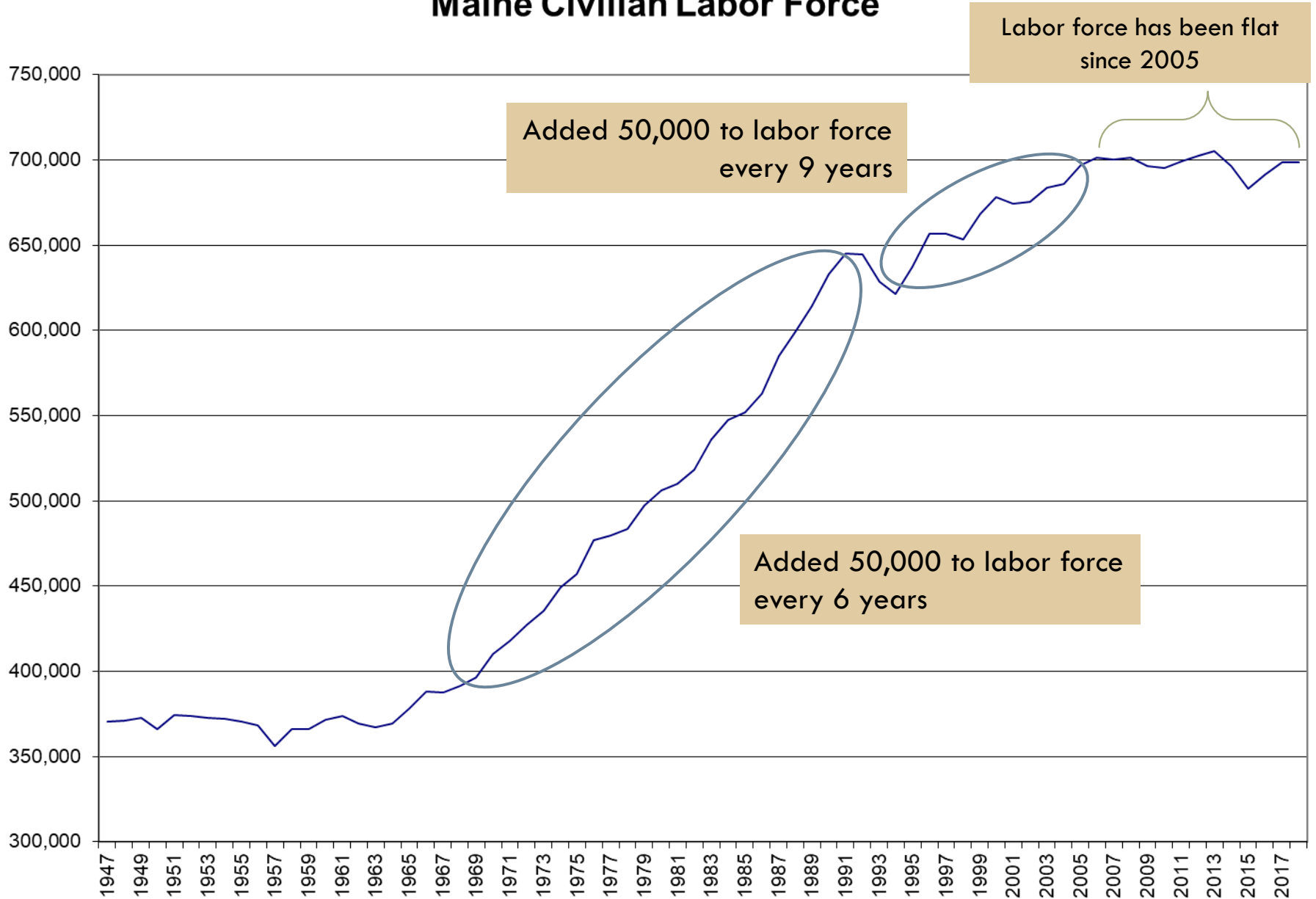
Labor Force and Employment



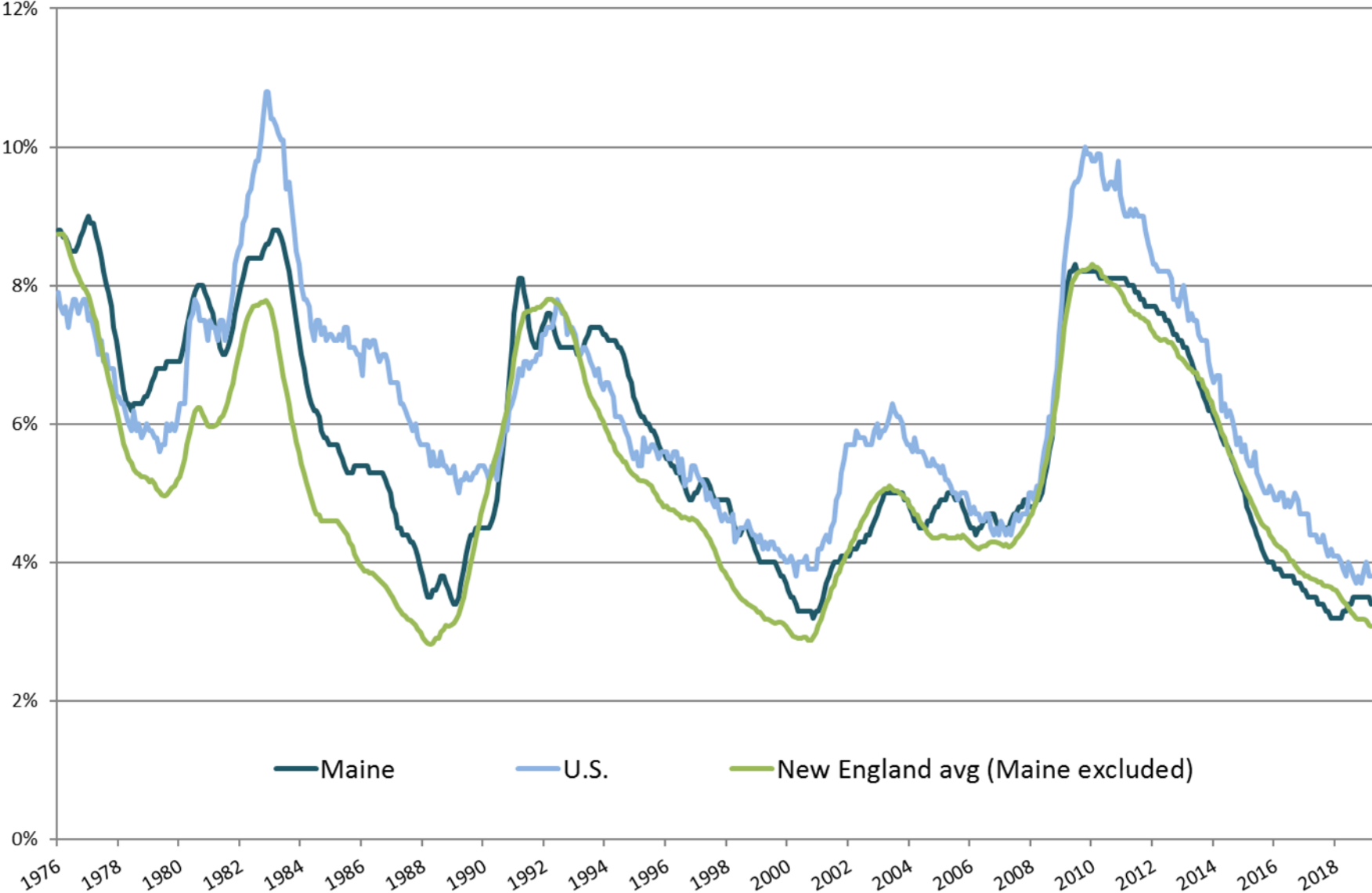
Projected Population Change and Participation Rates by Age Group in Maine



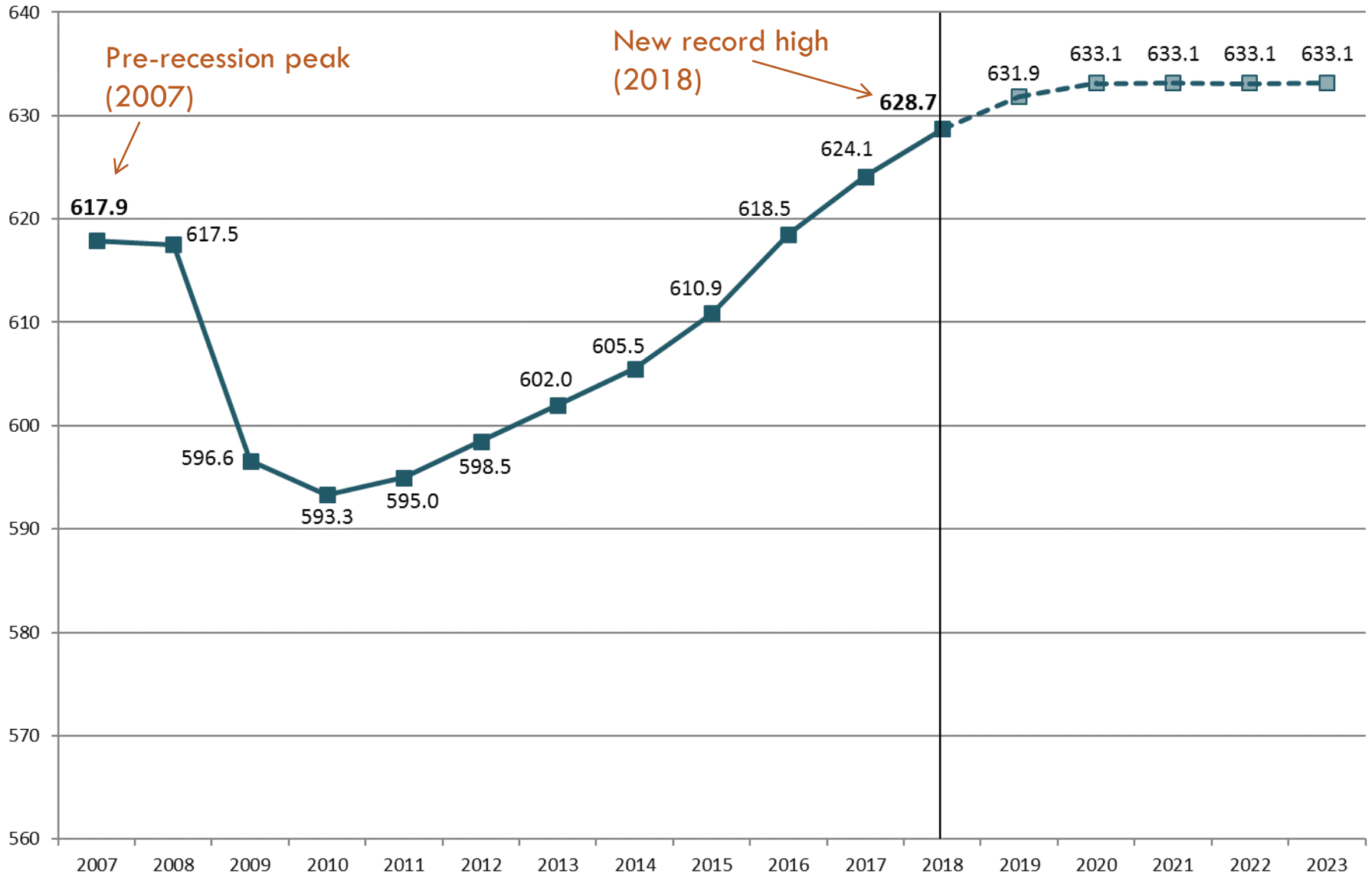
Maine Civilian Labor Force



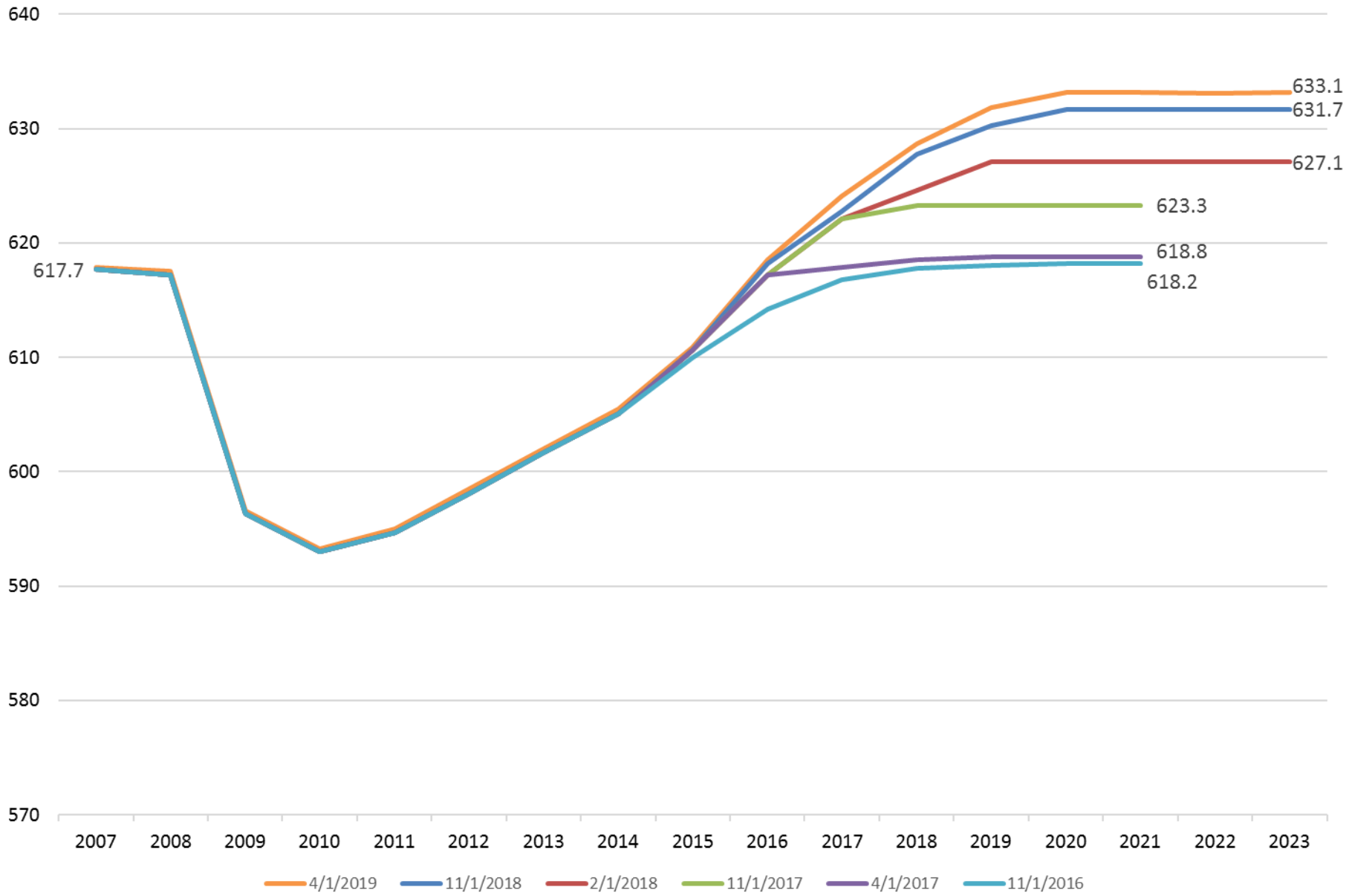
Monthly Unemployment Rate (Seasonally Adjusted)



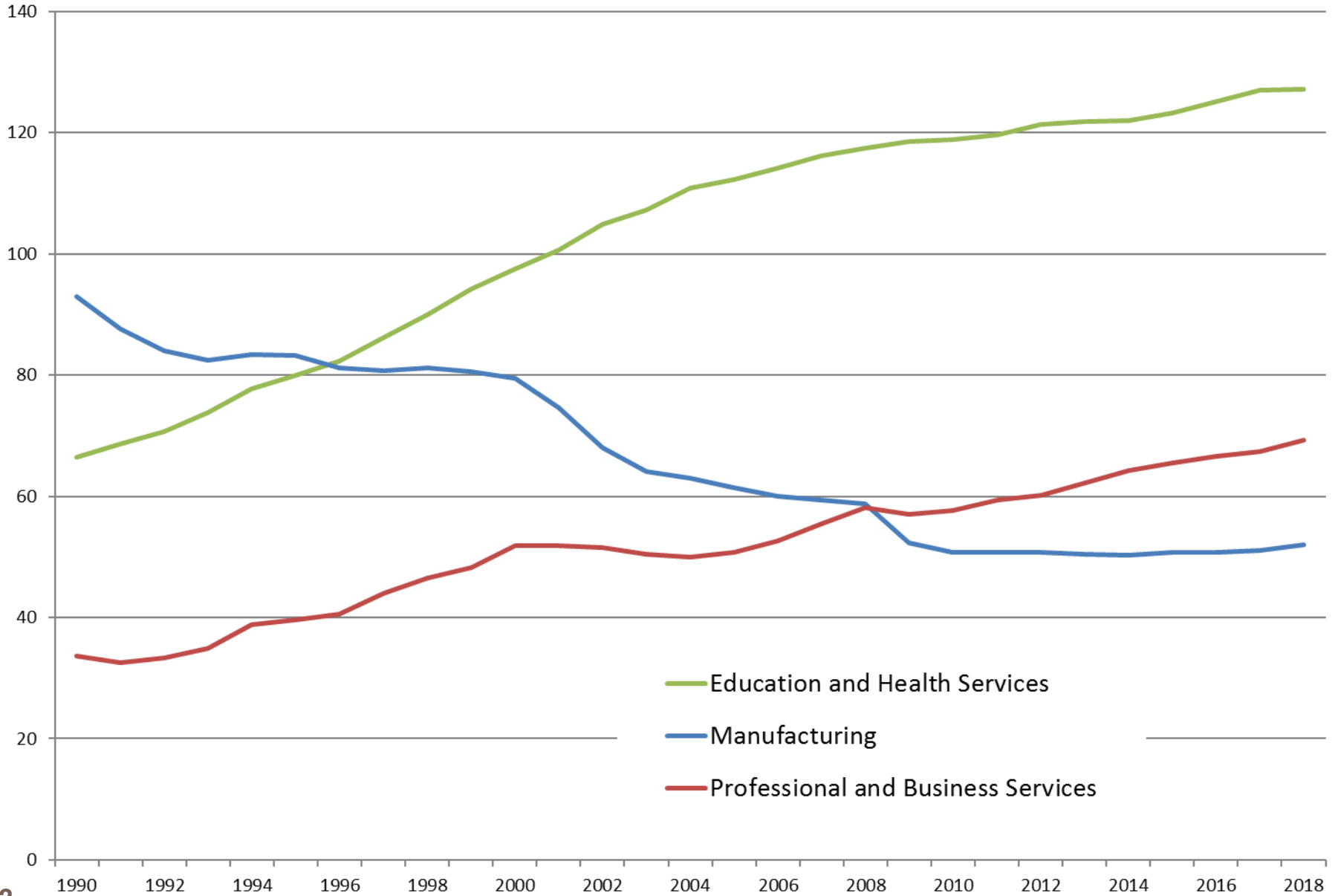
Total Nonfarm Employment (in thousands) History and CEFC forecast



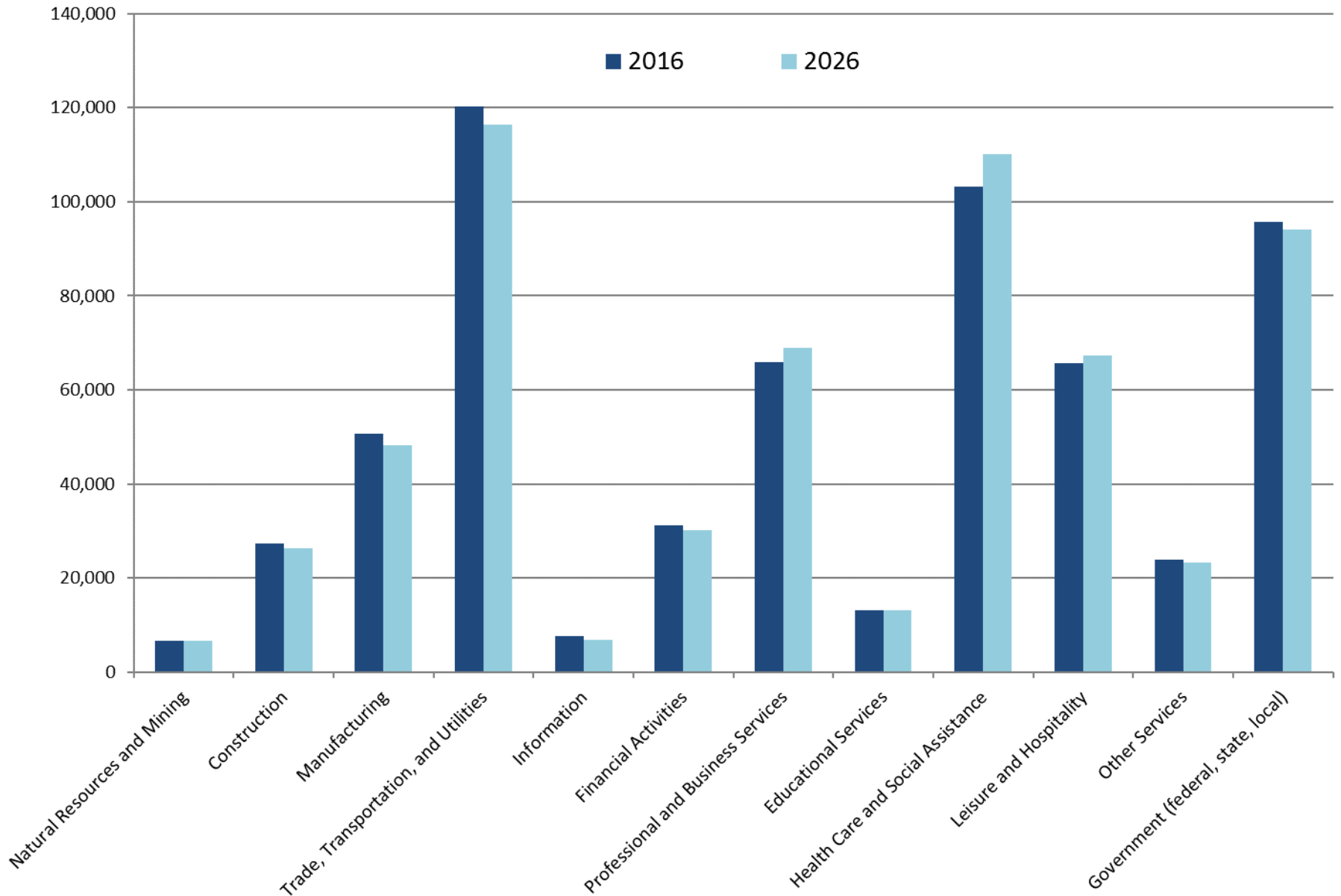
Revisions to CEFC Forecast of Total Nonfarm Employment (in thousands)



Maine Wage and Salary Employment by Industry (in thousands)



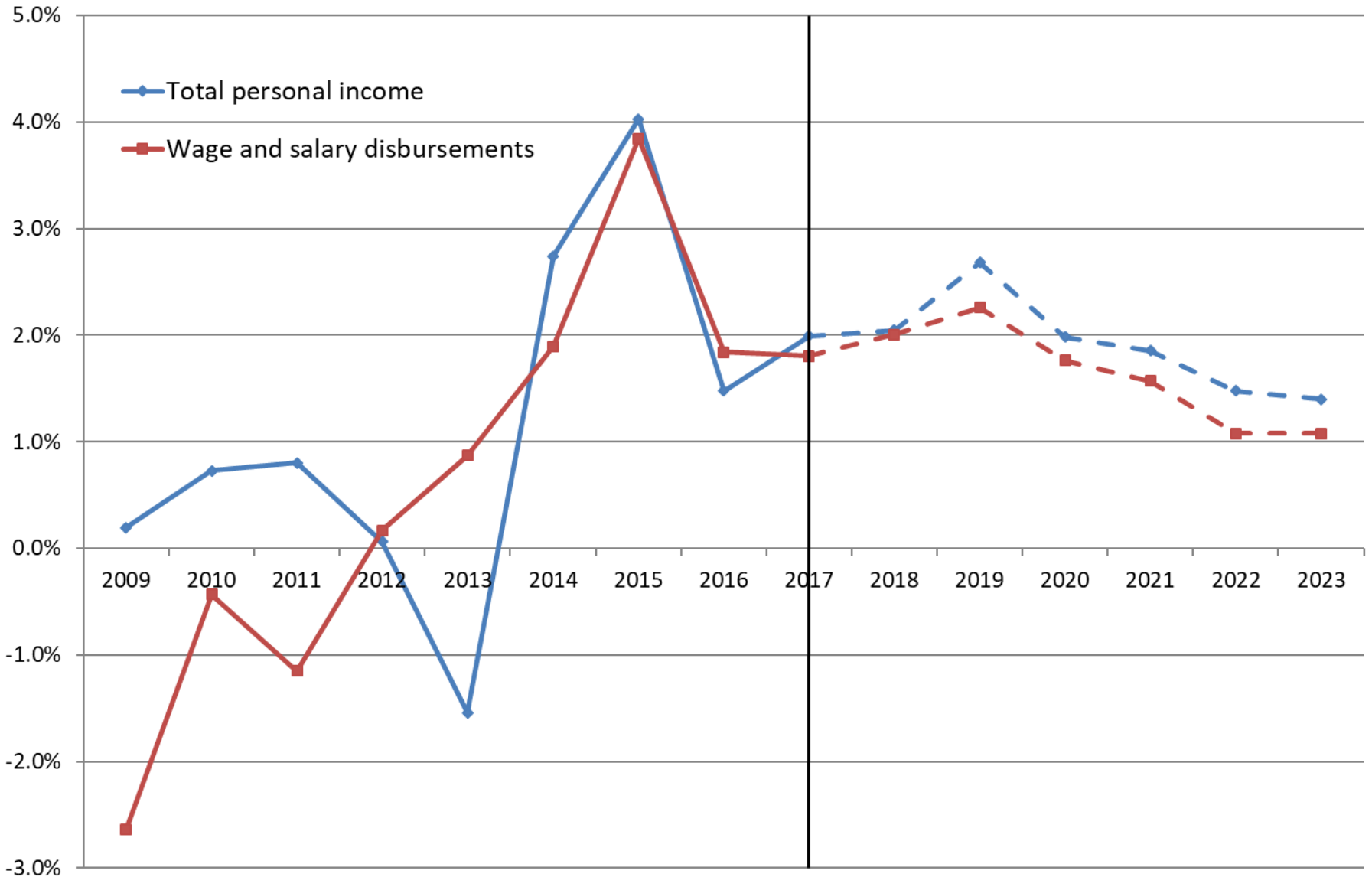
Maine Wage and Salary Employment by Industry



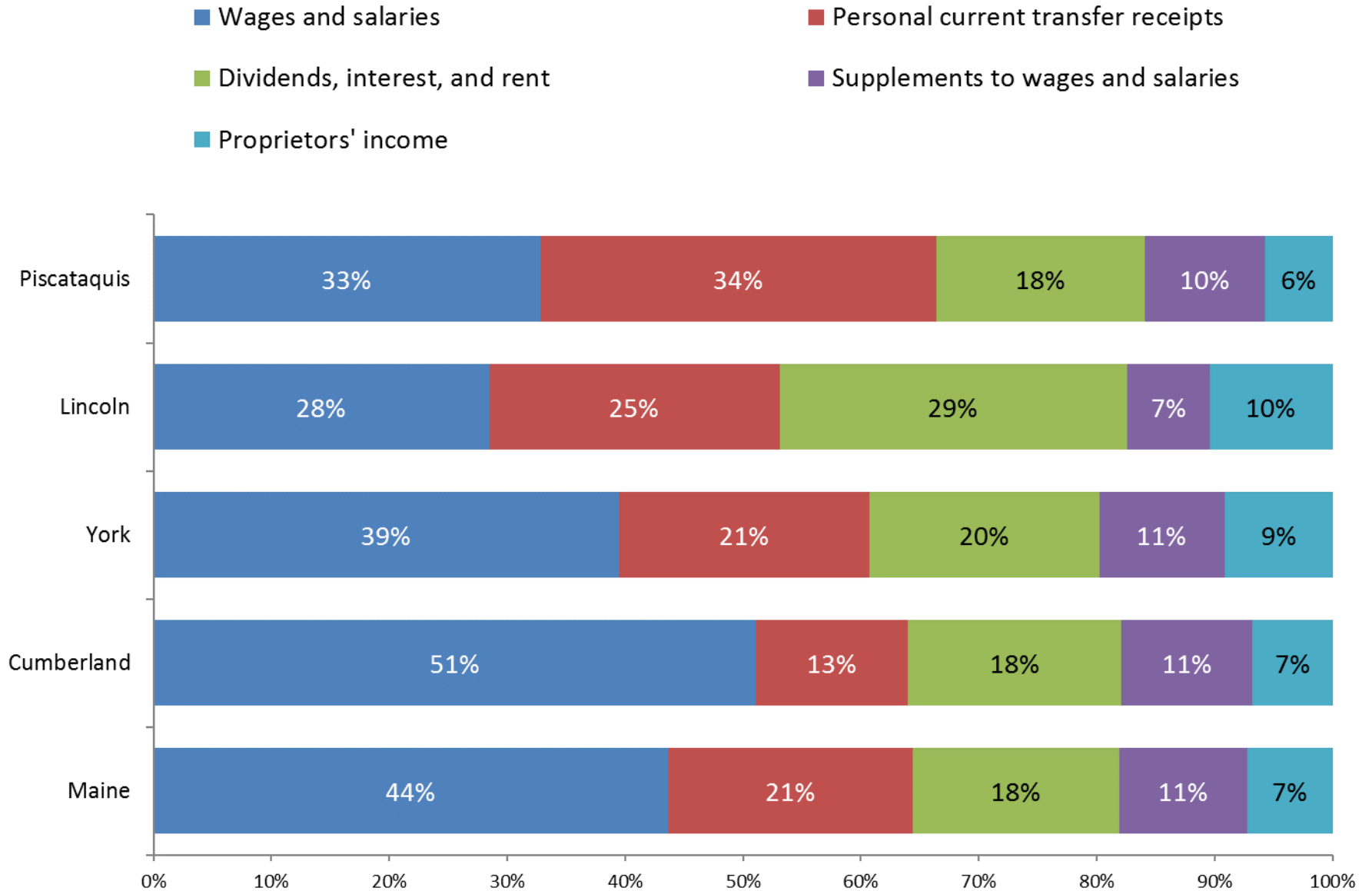
Income and GDP



Percent Change in Real Personal Income, Maine 2009-2017 and forecast to 2023

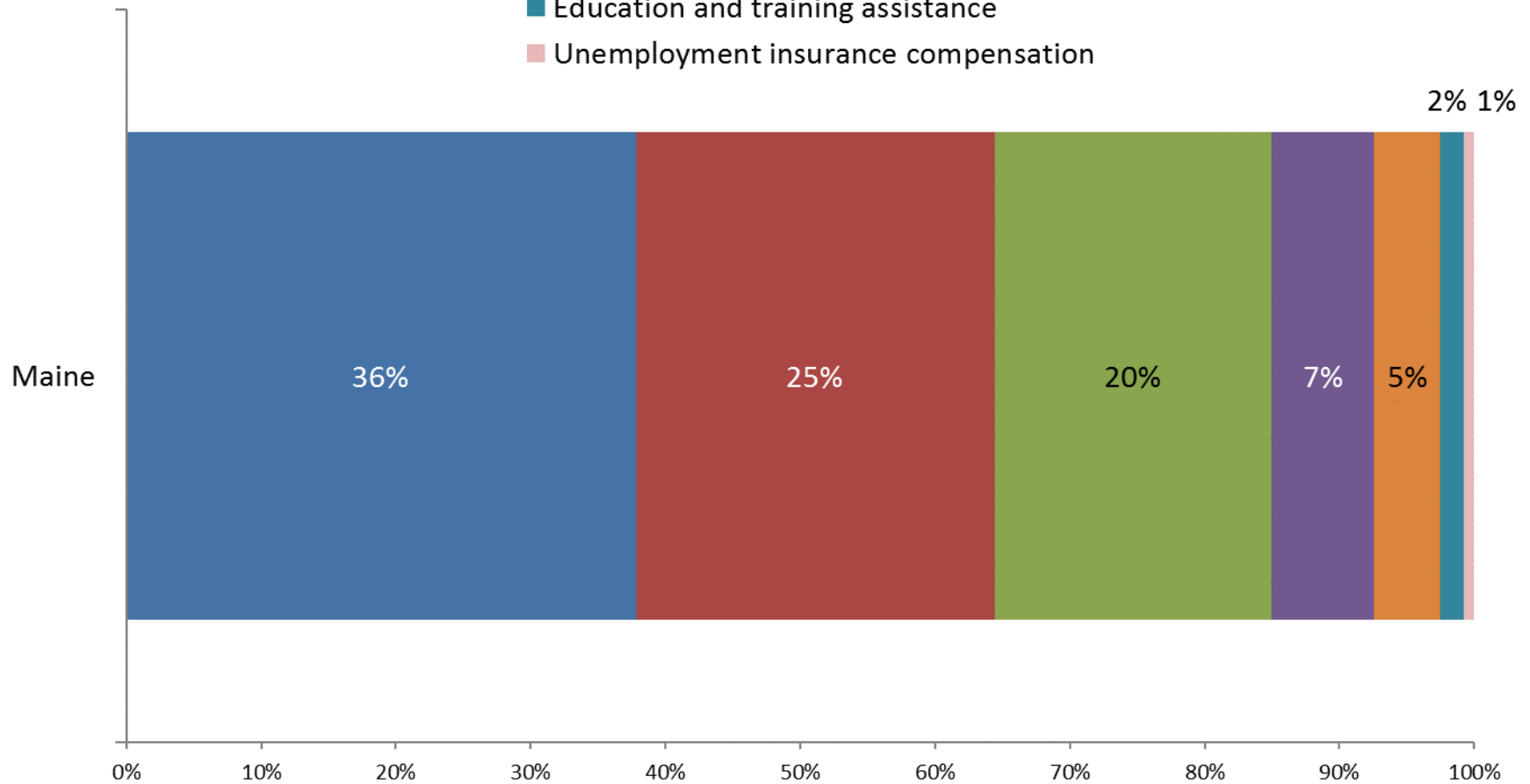


Major Components of Personal Income, 2017

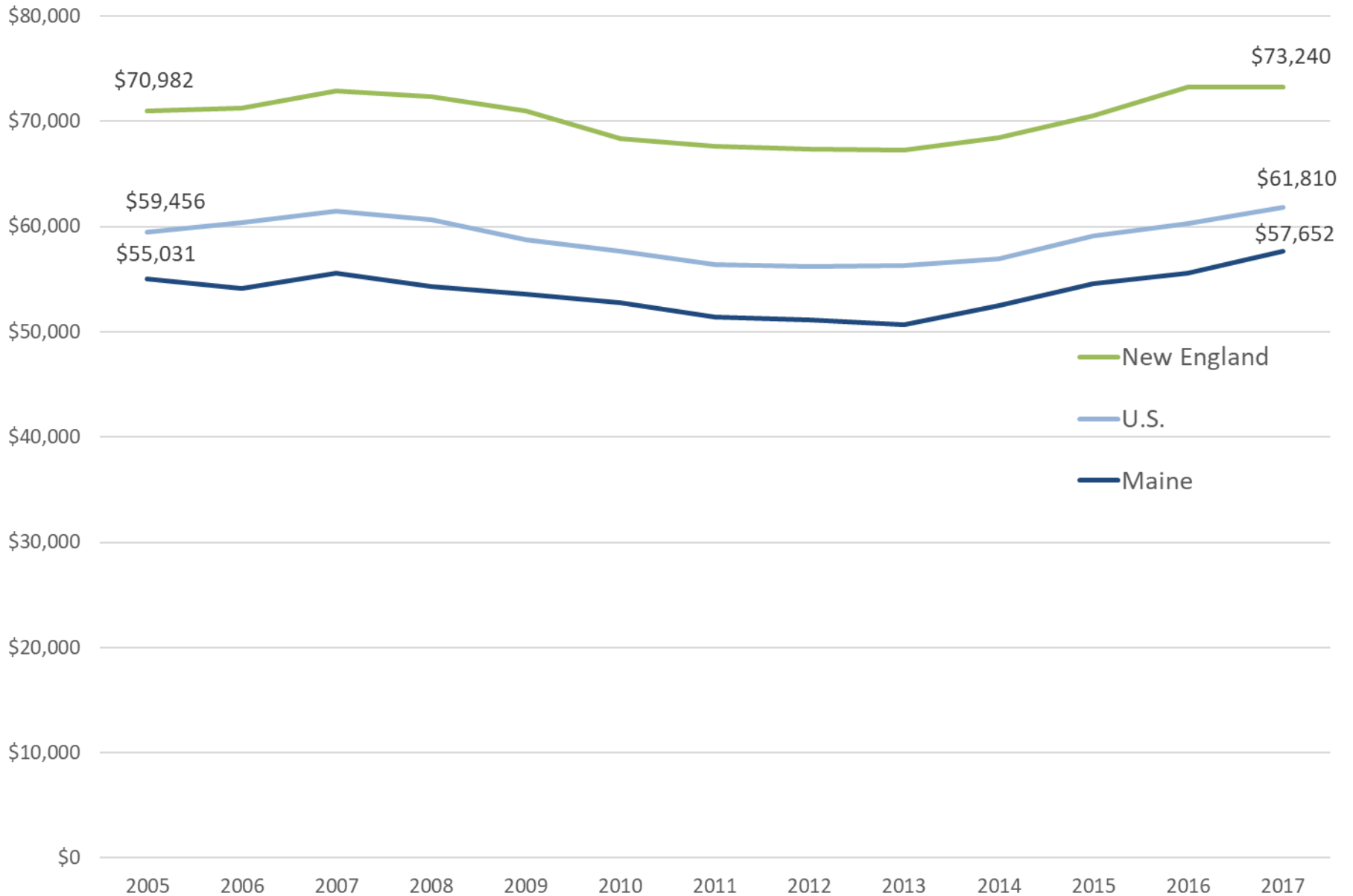


Components of Personal Current Transfer Receipts, 2017

- Social Security benefits
- Medicare benefits
- Medicaid
- Income maintenance benefits
- Veterans' benefits
- Education and training assistance
- Unemployment insurance compensation

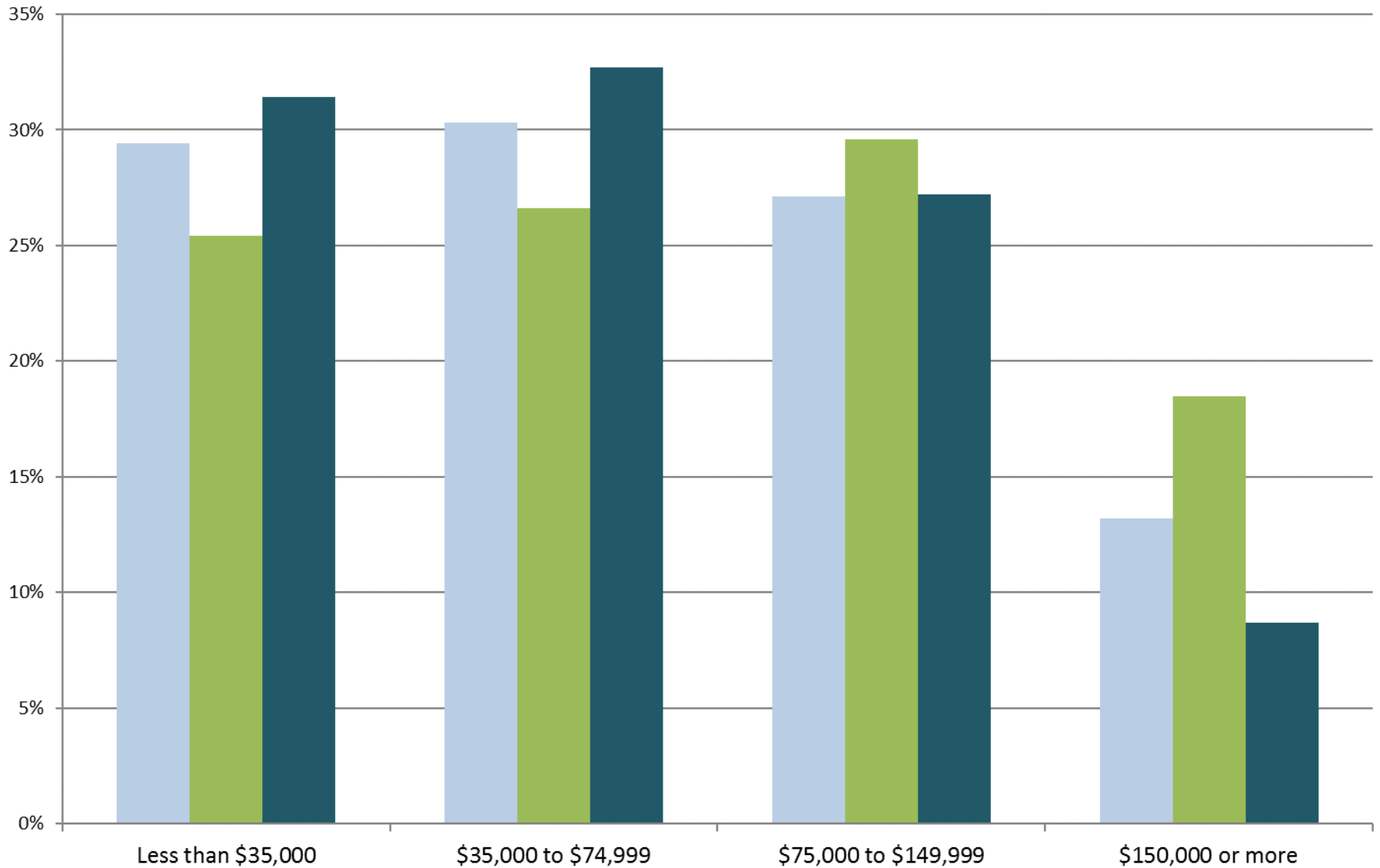


Real Median Household Income (in 2018 \$)

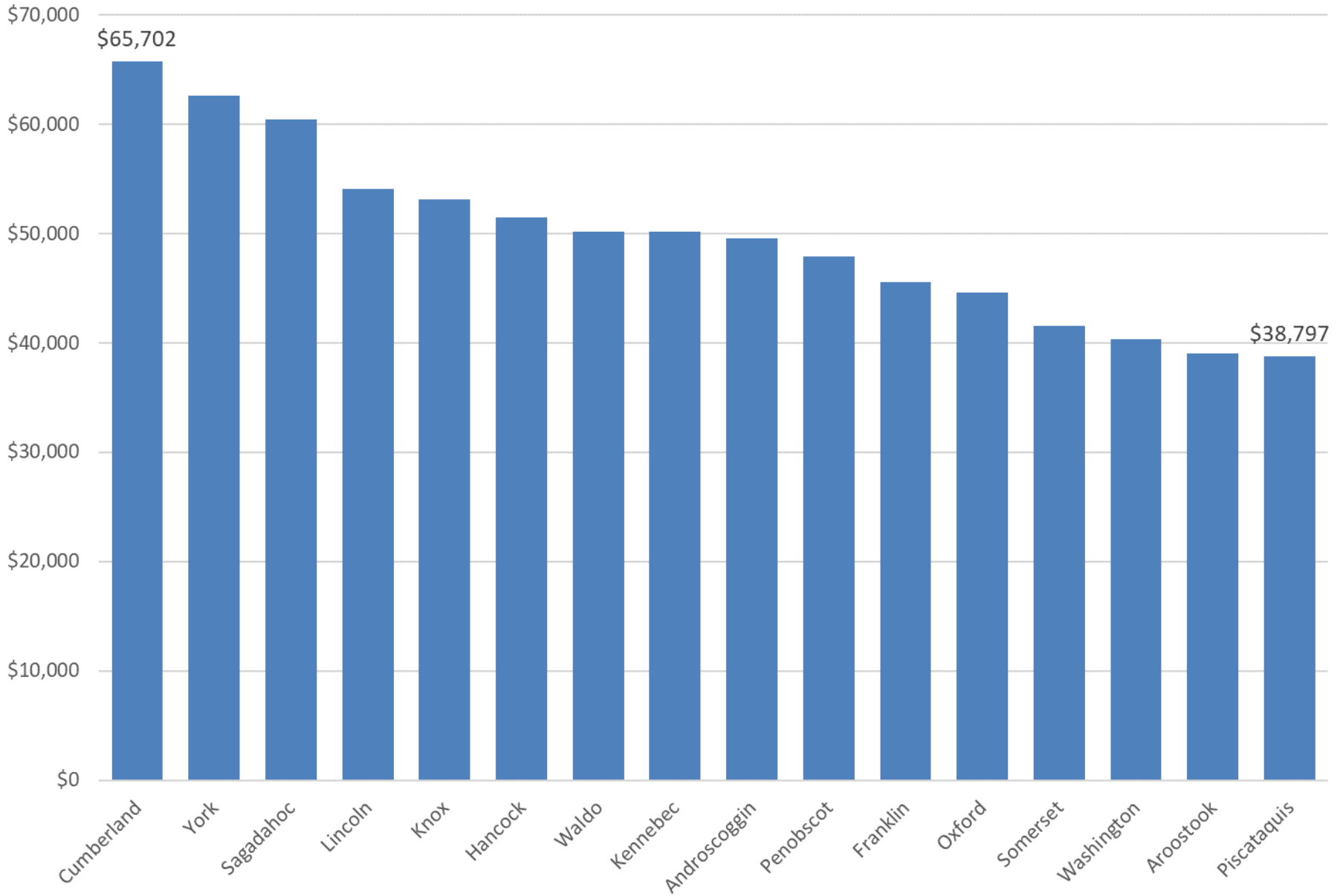


Percent of Households by Income Level, 2017

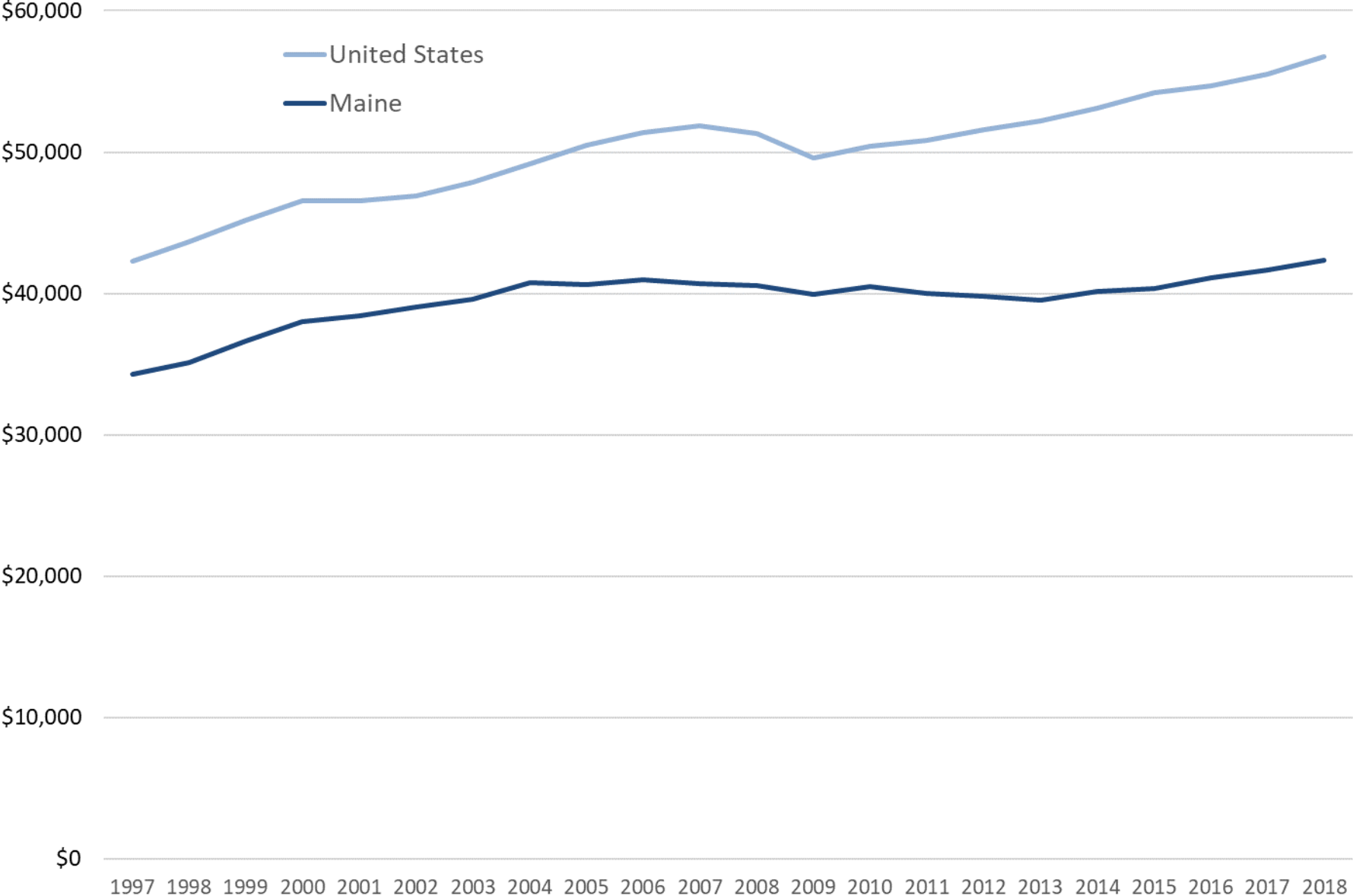
■ U.S. ■ New England ■ Maine



Median Household Income

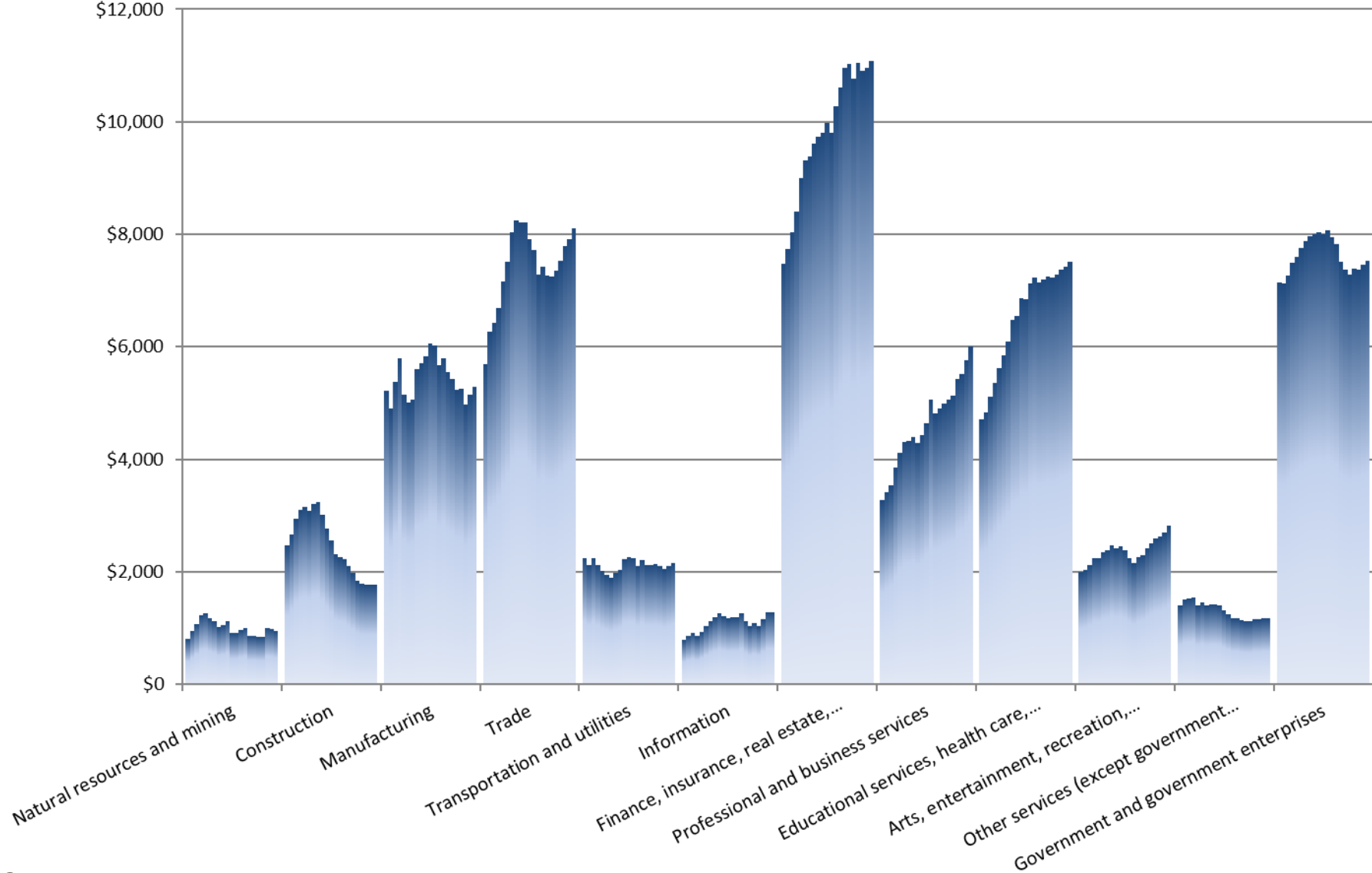


Per Capita Real Total GDP

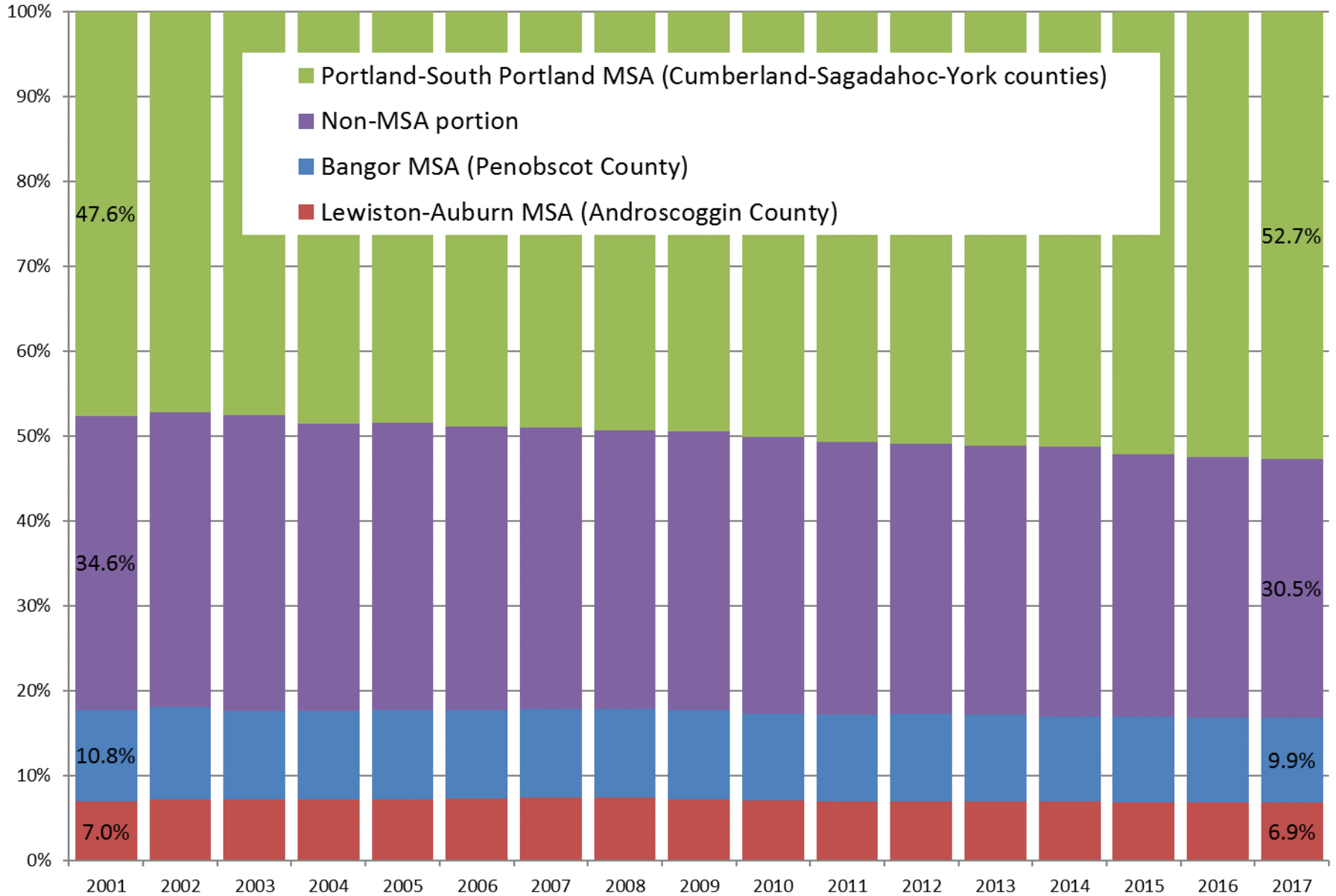


Maine Real GDP by Industry, 1997-2017

(in millions of chained 2012 dollars)



Share of Maine Real GDP by Metropolitan Area



Contact Information

34

Amanda Rector

Maine State Economist

Department of Administrative and Financial Services

amanda.rector@maine.gov

(207) 287-2873