

THE ECONOMICS AND DEMOGRAPHICS OF MAINE

PPM 611: Economics and Public Policy
Muskie School of Public Service

September 9, 2020

Amanda Rector

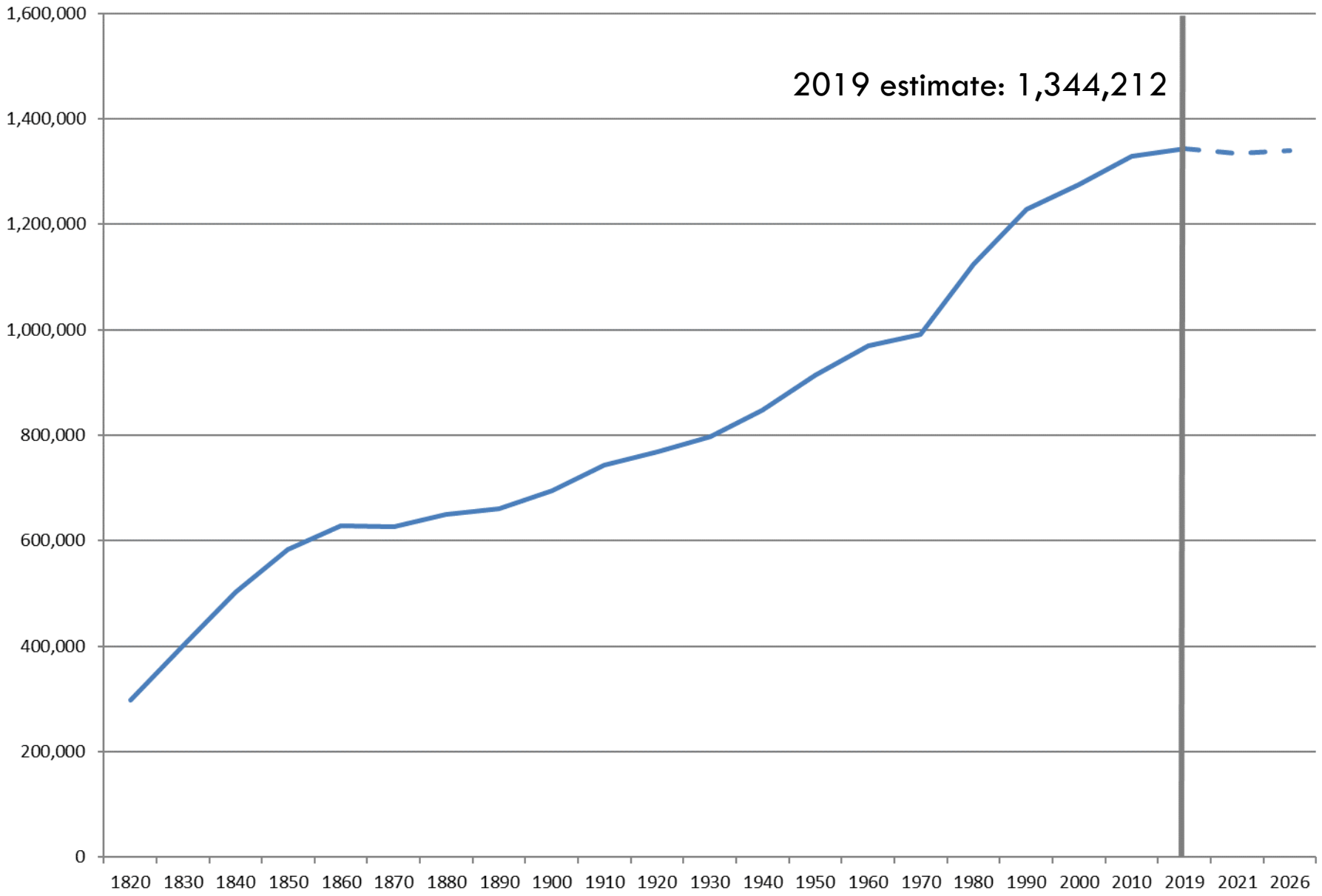
Maine State Economist

Department of Administrative and Financial Services

Demographics



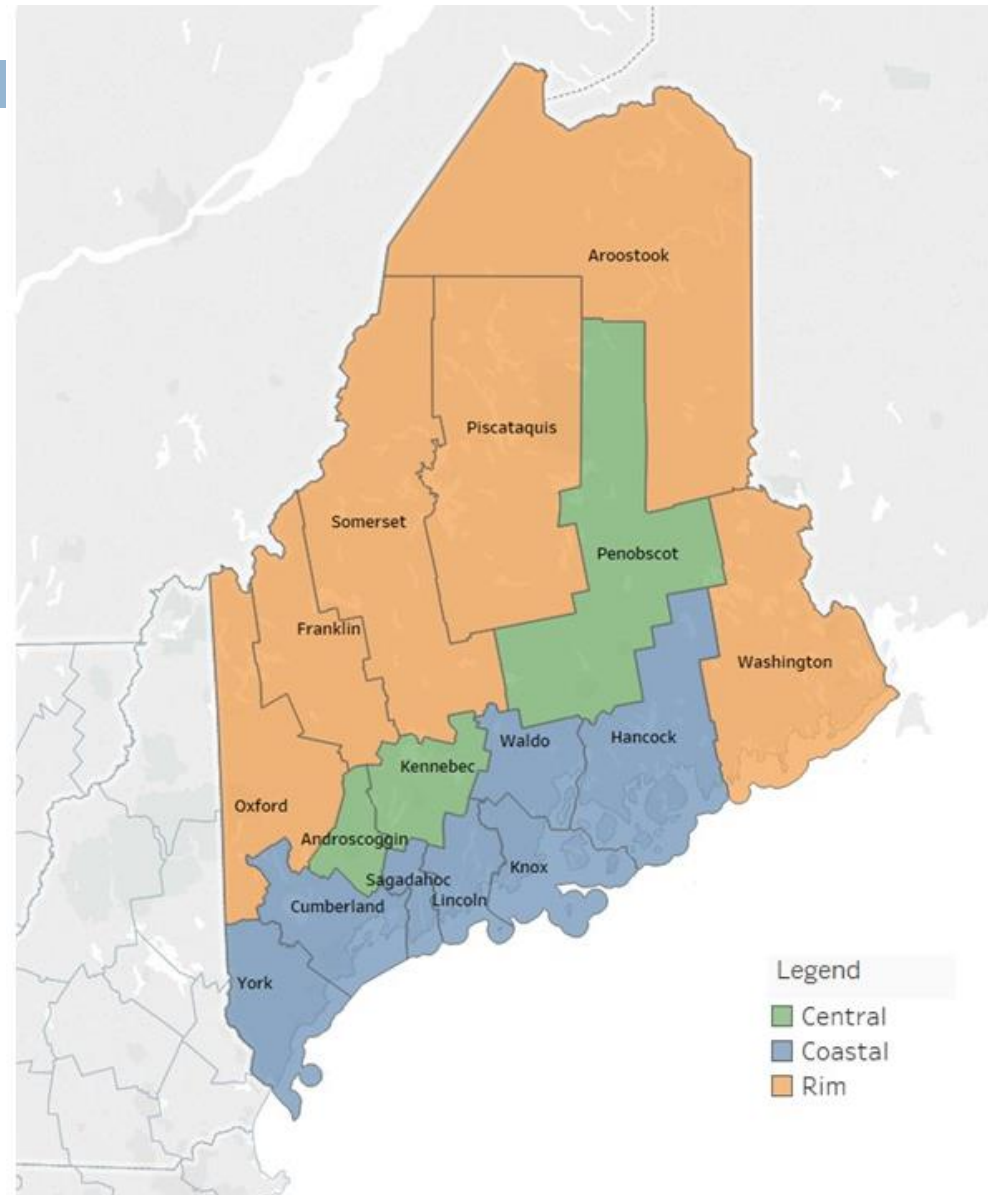
Total Population, Maine



Regions of Maine

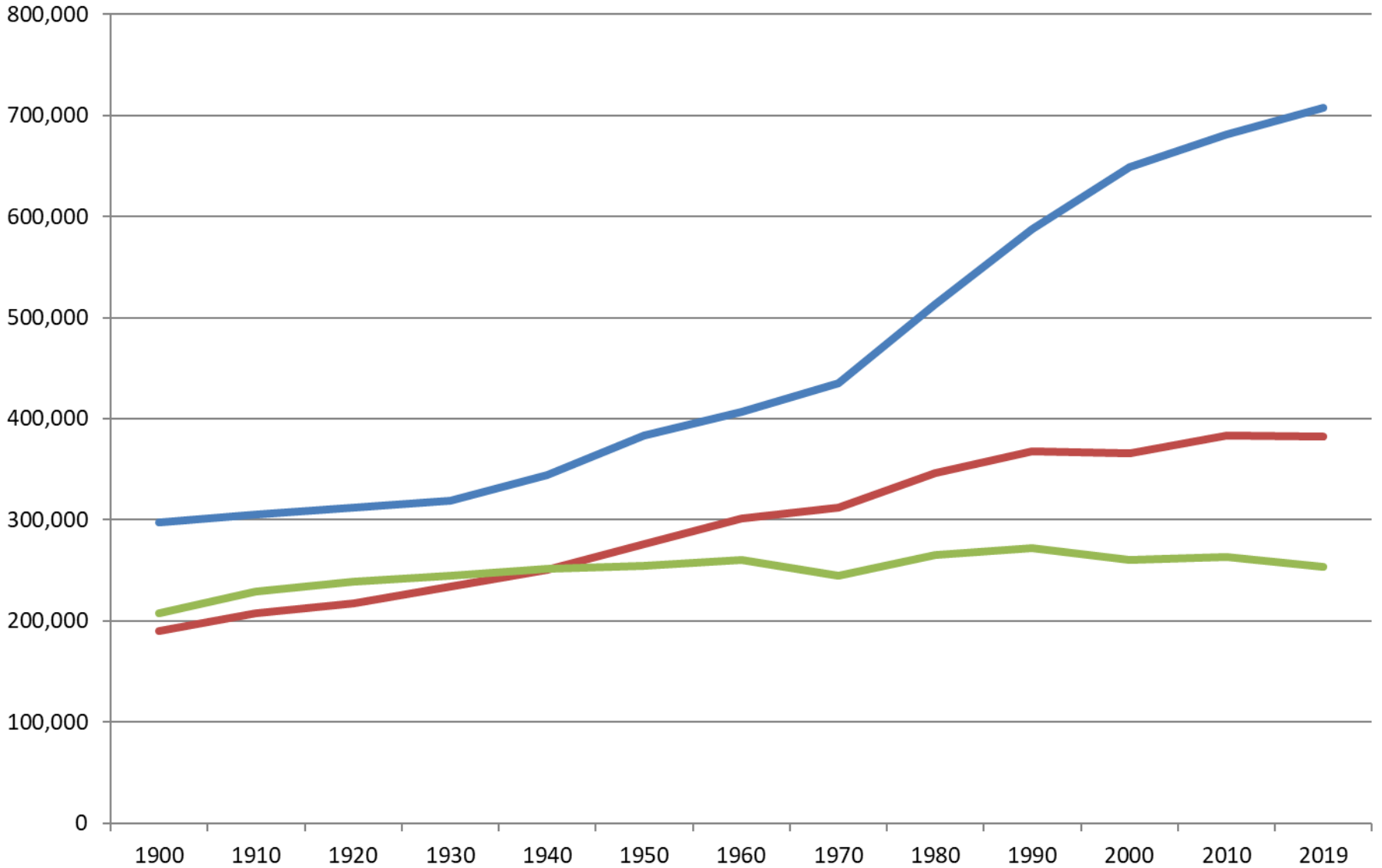
4

- Three counties had peak decennial population in a year other than 2010:
 - Aroostook: 1960
 - Piscataquis: 1920
 - Washington: 1900



Total Population, Regions of Maine

Coastal Central Rim



Maine: a demographic snapshot

6

- 2019 Population Estimate: 1,344,212
 - ▣ 42nd largest in US

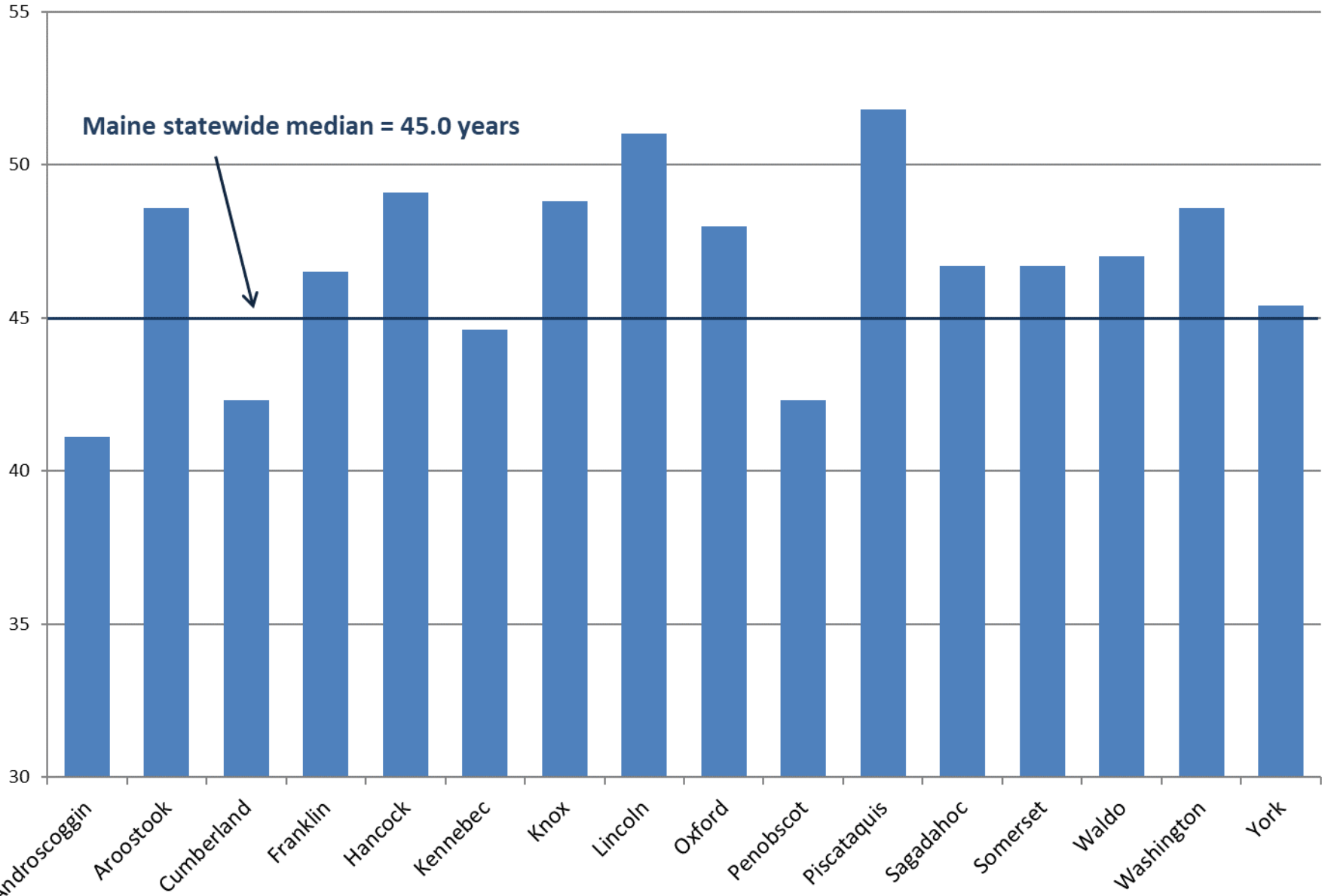
- 2010 – 2019 Population Change: +1.2%
 - ▣ 40th among U.S. states (ahead of WV, IL, VT, CT, MS, NY, RI, PA, NJ, MI)

- Median age: 45.0 years
 - ▣ Oldest in US

- 7.0% not identifying as white, non-Hispanic
 - ▣ Lowest percentage in US



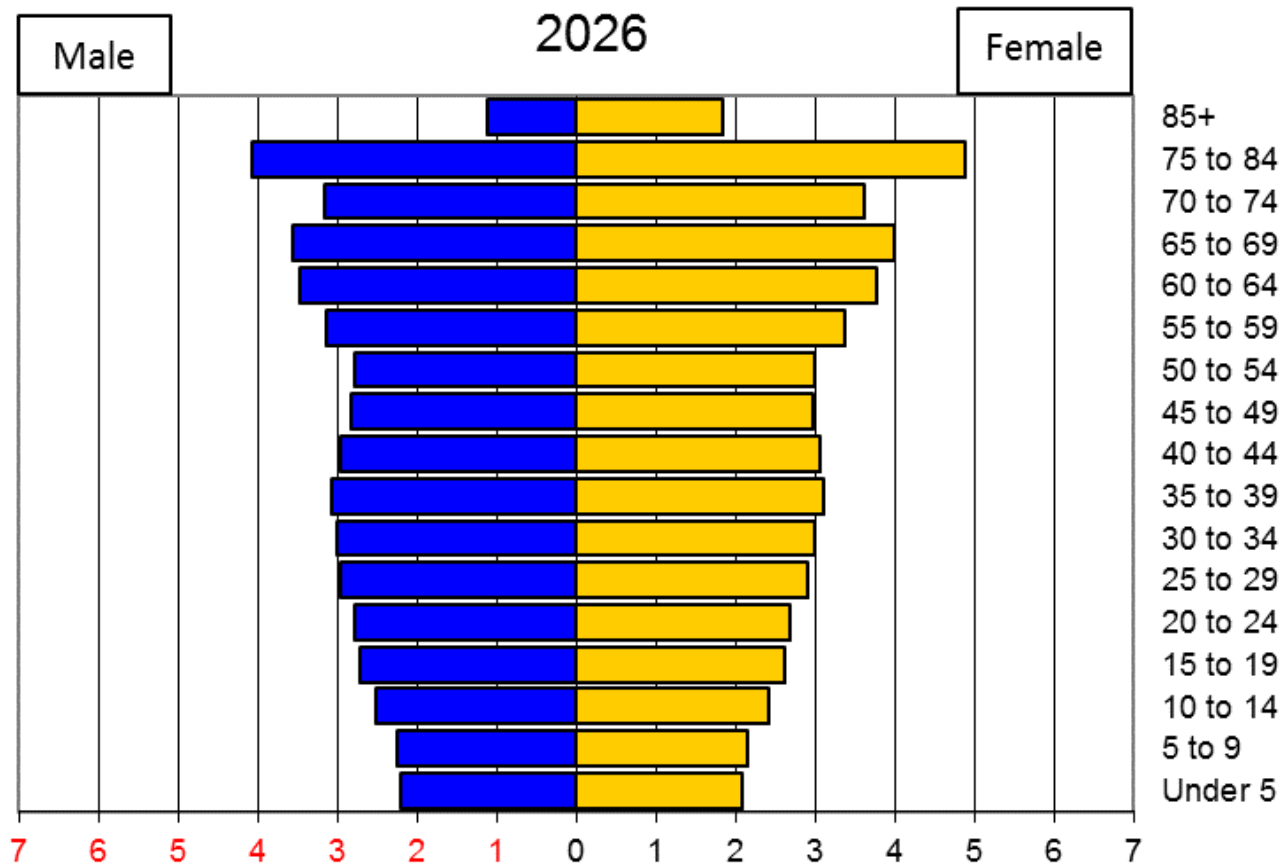
Median Age



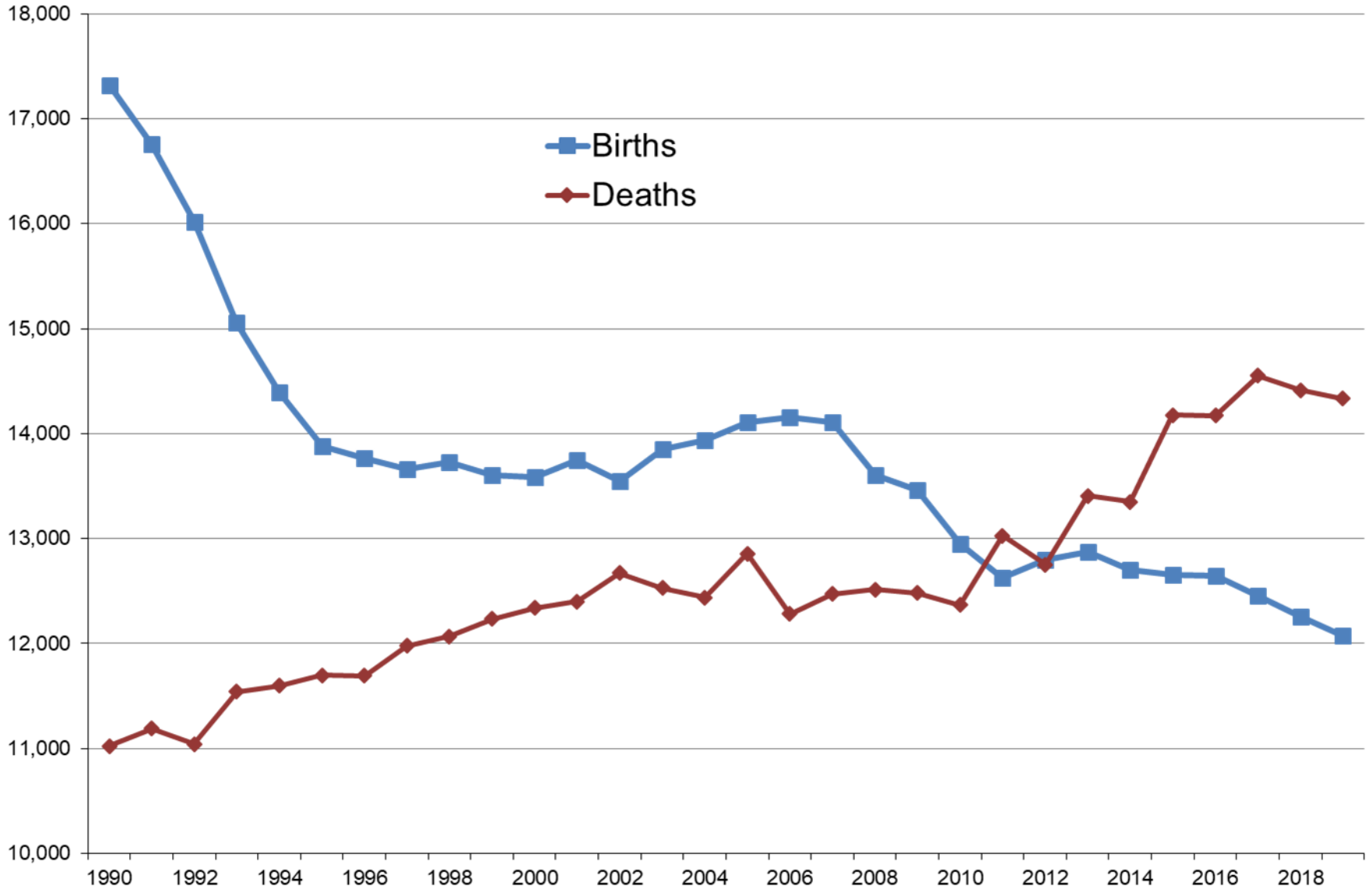
Maine statewide median = 45.0 years

The Baby Boom Wave

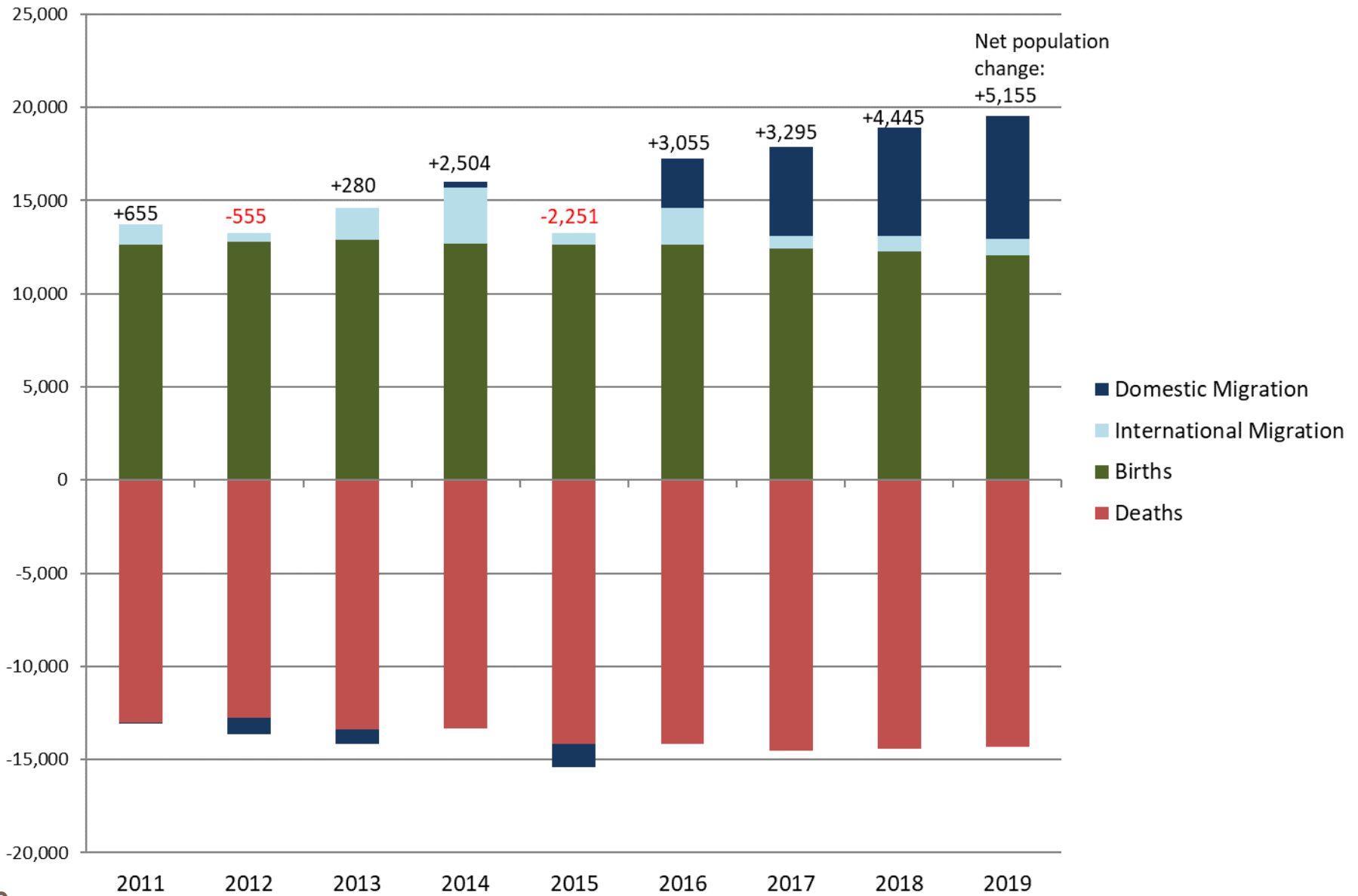
8



Births and Deaths per year in Maine



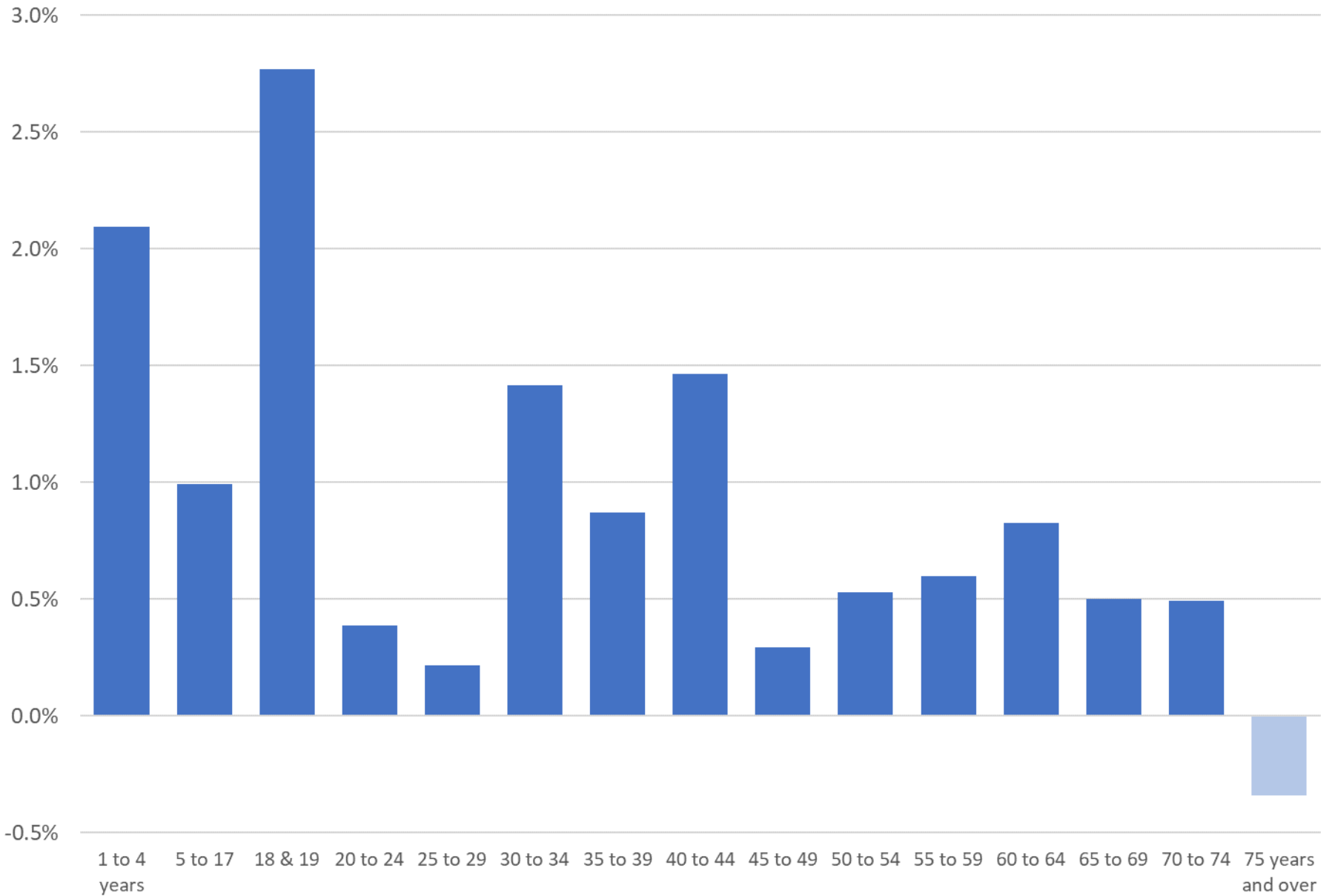
Components of Population Change, Maine



Where are people moving to/from?

2018 State-to-State Migration Patterns			
<i>Moved to Maine from:</i>		<i>Moved from Maine to:</i>	
Massachusetts	5,775	New Hampshire	4,016
New Hampshire	4,731	Massachusetts	3,188
New York	2,909	Florida	2,783
Texas	2,386	Connecticut	1,342
Florida	2,082	California	1,294
Connecticut	1,734	North Carolina	1,235
Pennsylvania	1,393	Maryland	990
Michigan	1,320	Pennsylvania	916
North Carolina	1,049	Colorado	912
Vermont	997	Texas	815

Annual Domestic Migration Rate by Age, 2018

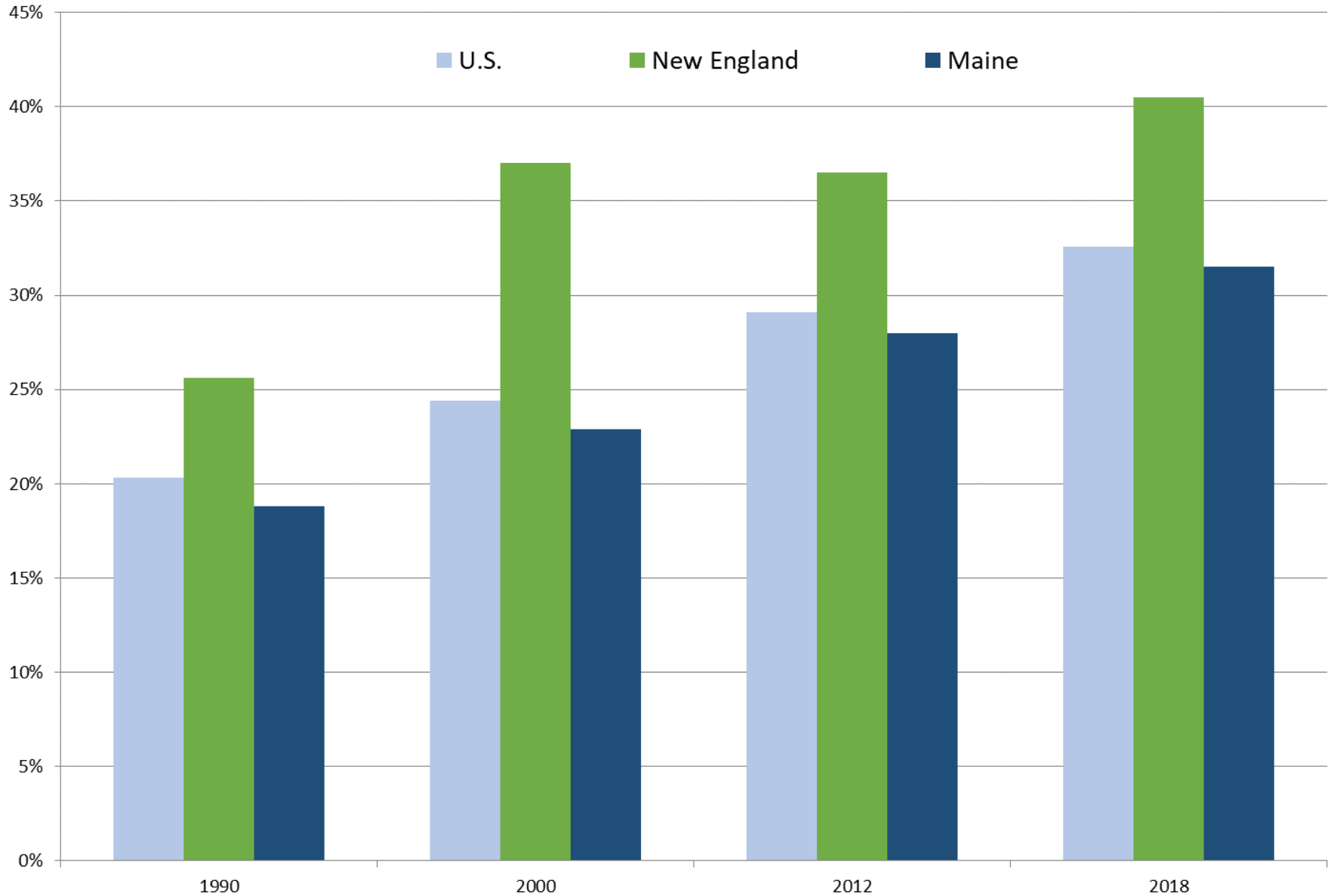


Who are the people moving to Maine?

13

Net domestic migration, Maine, 2018		
	Number	Migration rate
Less than HS graduate	-870	-1.3%
HS graduate/equivalent	762	0.2%
Some college or associate's degree	1,374	0.5%
Bachelor's degree	2,152	1.1%
Graduate or professional degree	2,308	2.1%

Percent of Population Age 25+ with a Bachelor's Degree or Higher

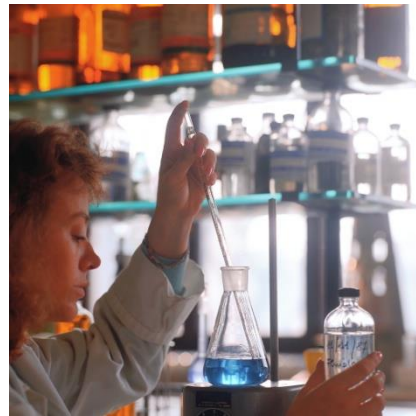


Migration effects from COVID-19?

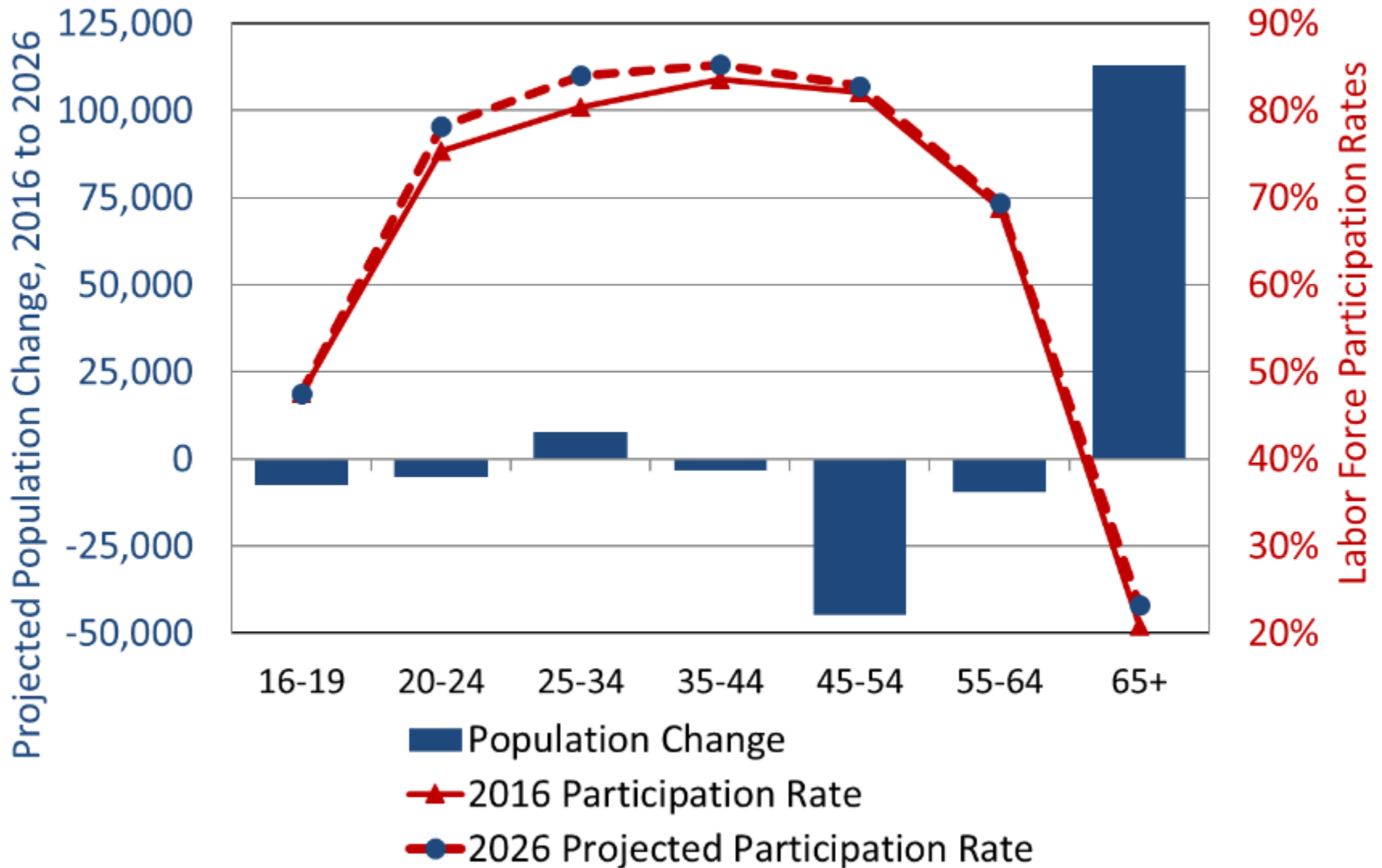
15

- Maine's lower population density may prove increasingly attractive to people in the coming months and years
- The ability to work remotely is making it easier for people to consider a move to Maine, especially if high speed internet access improves

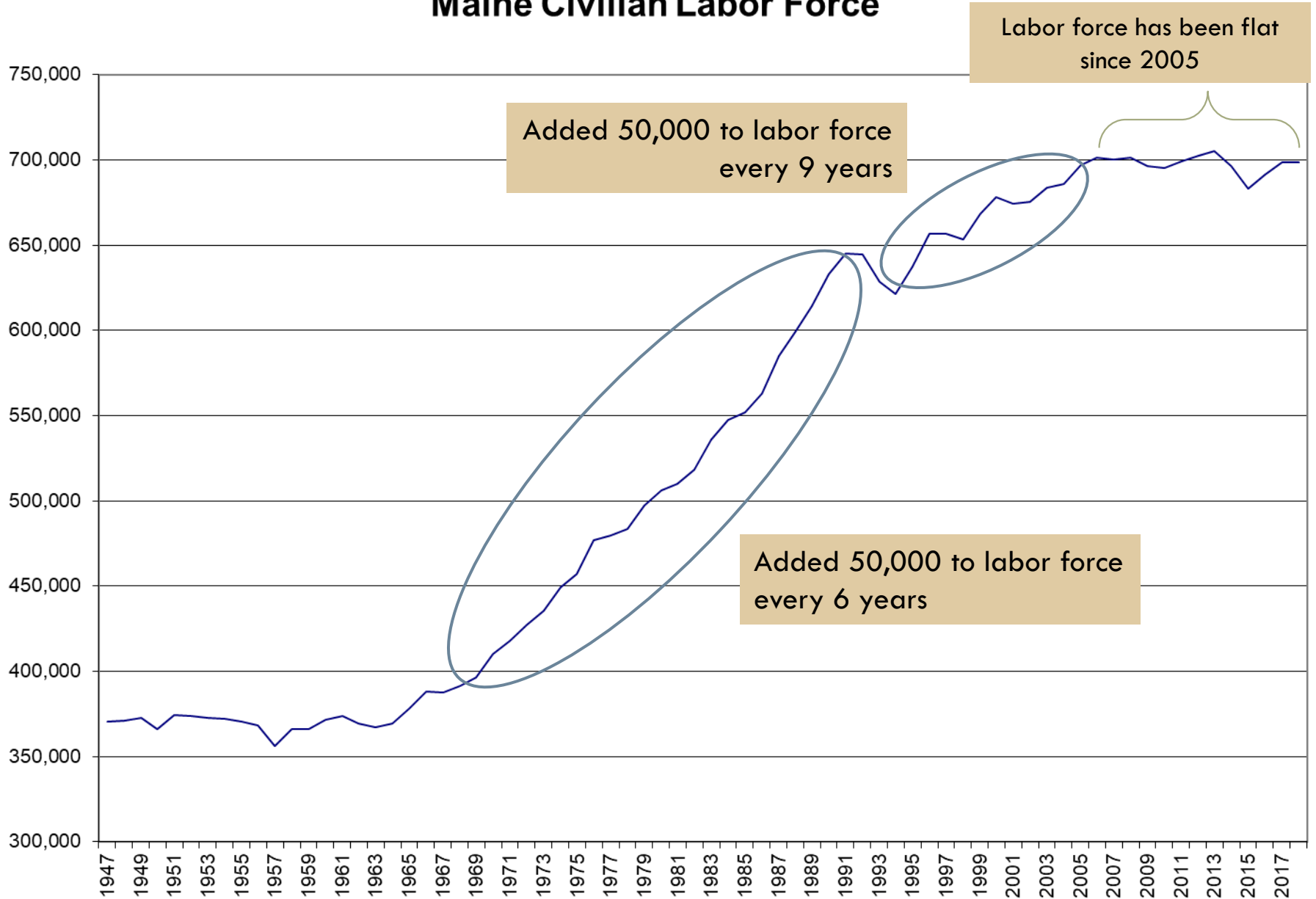
Labor Force and Employment



Projected Population Change and Participation Rates by Age Group in Maine



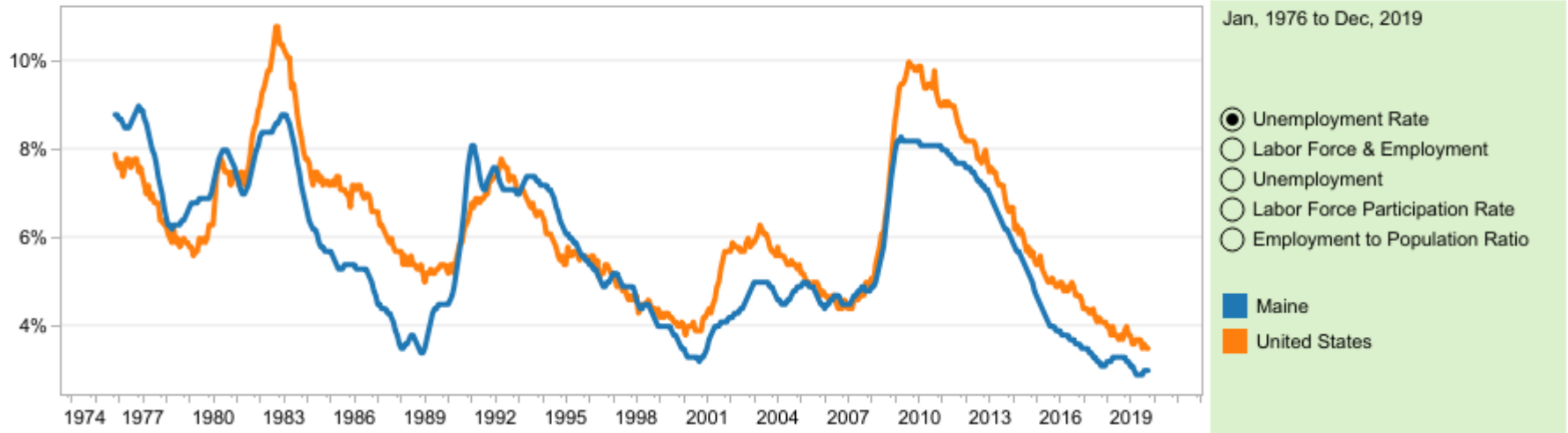
Maine Civilian Labor Force



Unemployment rates in Maine and the U.S. were at or near record lows at the end of 2019

19

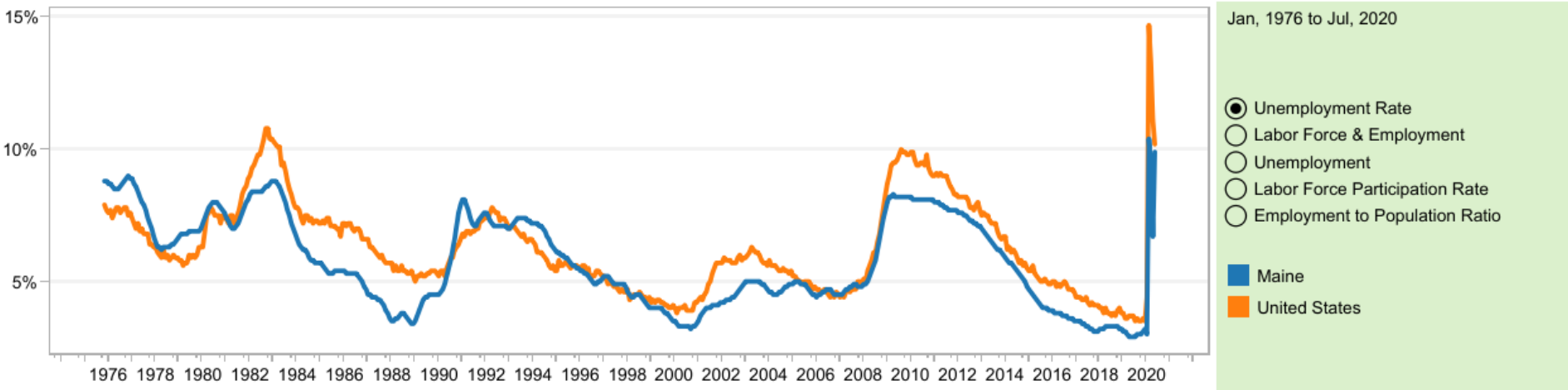
Unemployment Rate
(seasonally adjusted)



In April 2020, unemployment rates were the highest on record and rose more than in any other month; even so, they underrepresented the true unemployment rate due to technical issues

20

Unemployment Rate
(seasonally adjusted)



The Census Bureau is conducting weekly pulse surveys of households and small businesses

21

- 56% of households with children under age 18 present reported a loss of employment income compared to 43% of households without children
- 94-98% of those not working in the last 7 days due to reasons related to COVID-19 reported receiving no pay during time not working
 - ▣ Excluding retirees, does not include unemployment benefits

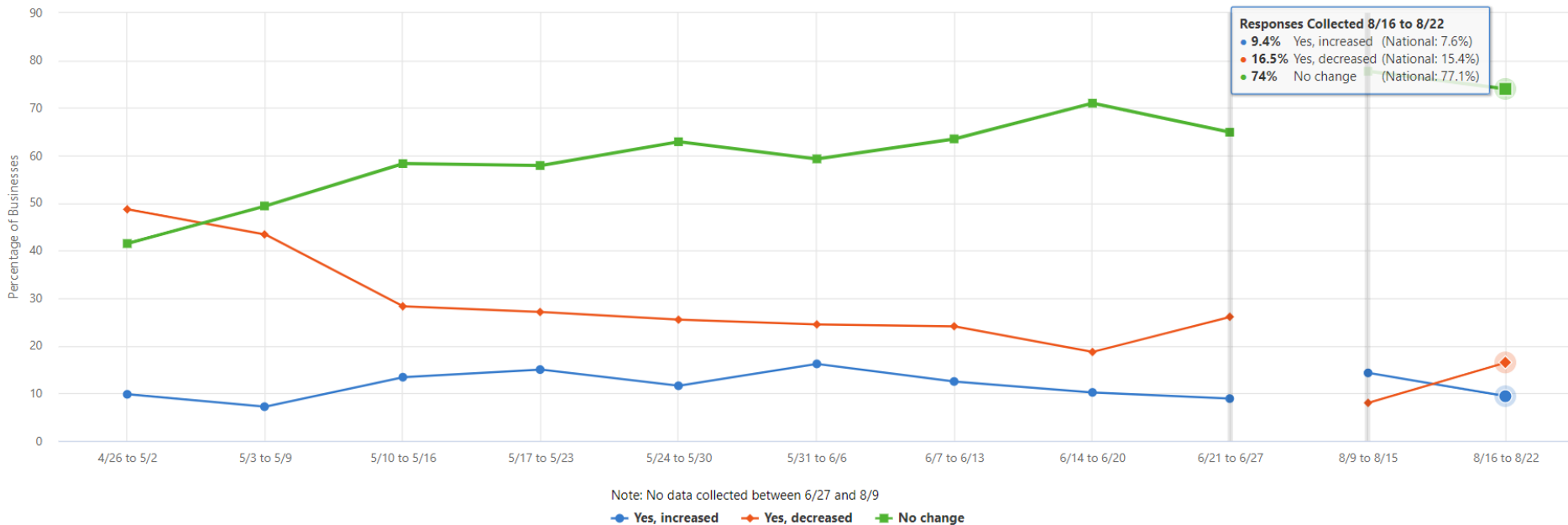
Declines in small business employee hours seem to have mostly leveled off

22

Survey Question: Change in hours
 Time Range: Phase 1 and Phase 2
 Filter: State Maine

In the last week, did this business have a change in the total number of hours worked by paid employees?

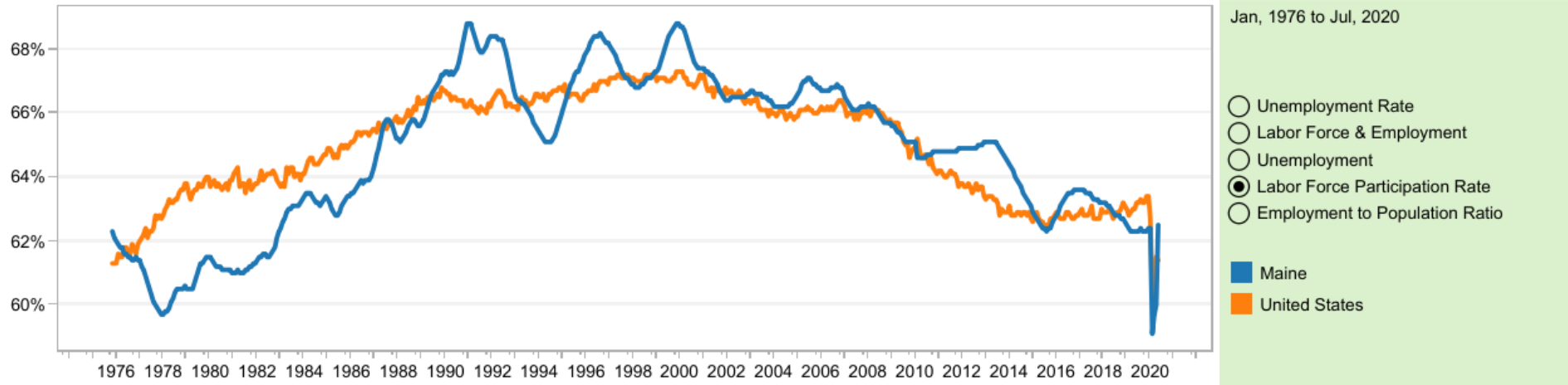
Maine Average



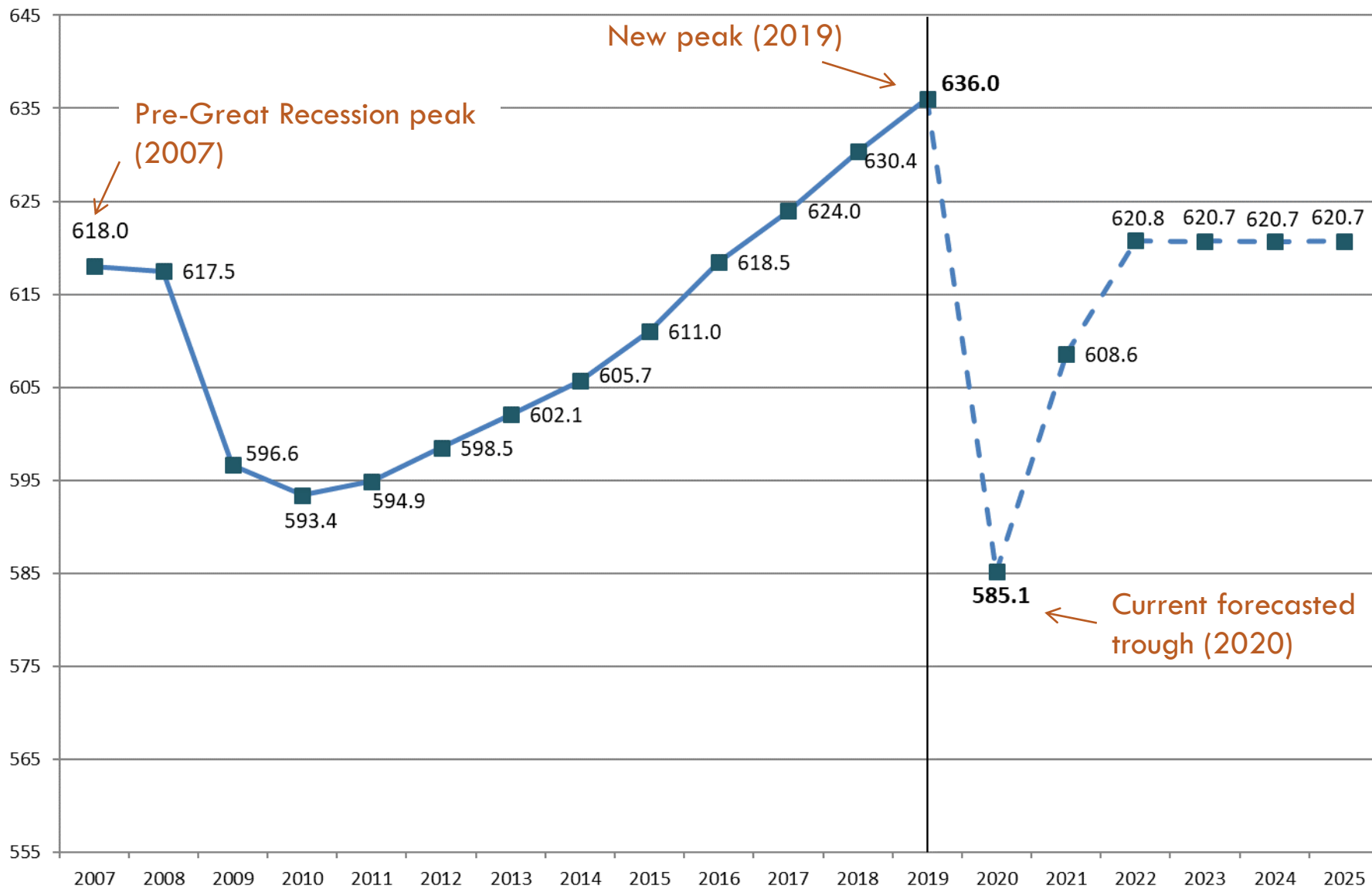
Labor force participation rates dropped in April, but have since recovered

23

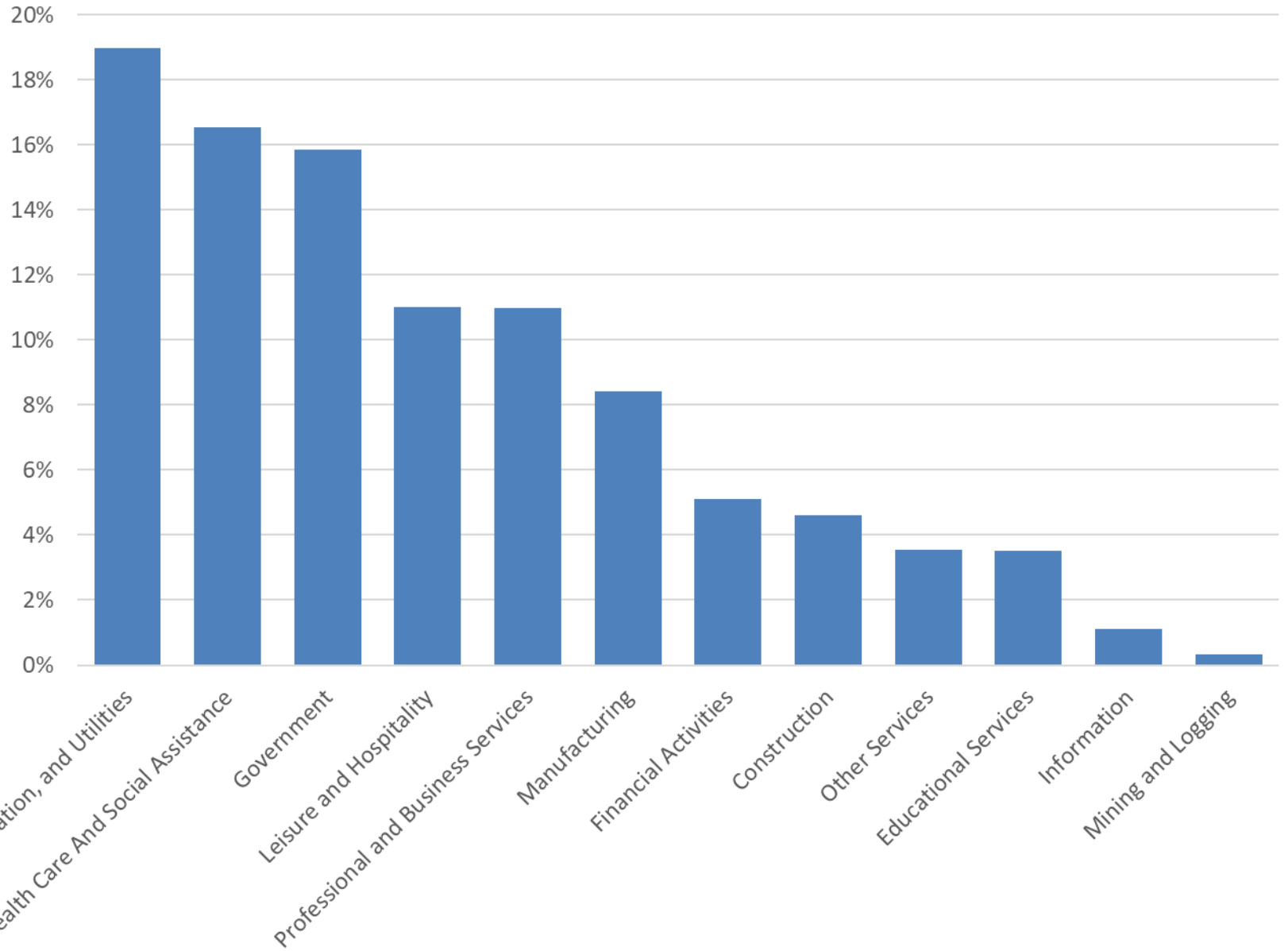
Labor Force Participation Rate
(seasonally adjusted)



Total Nonfarm Employment (in thousands) History and CEFC forecast



Share of Maine Nonfarm Employment by Industry, 2019



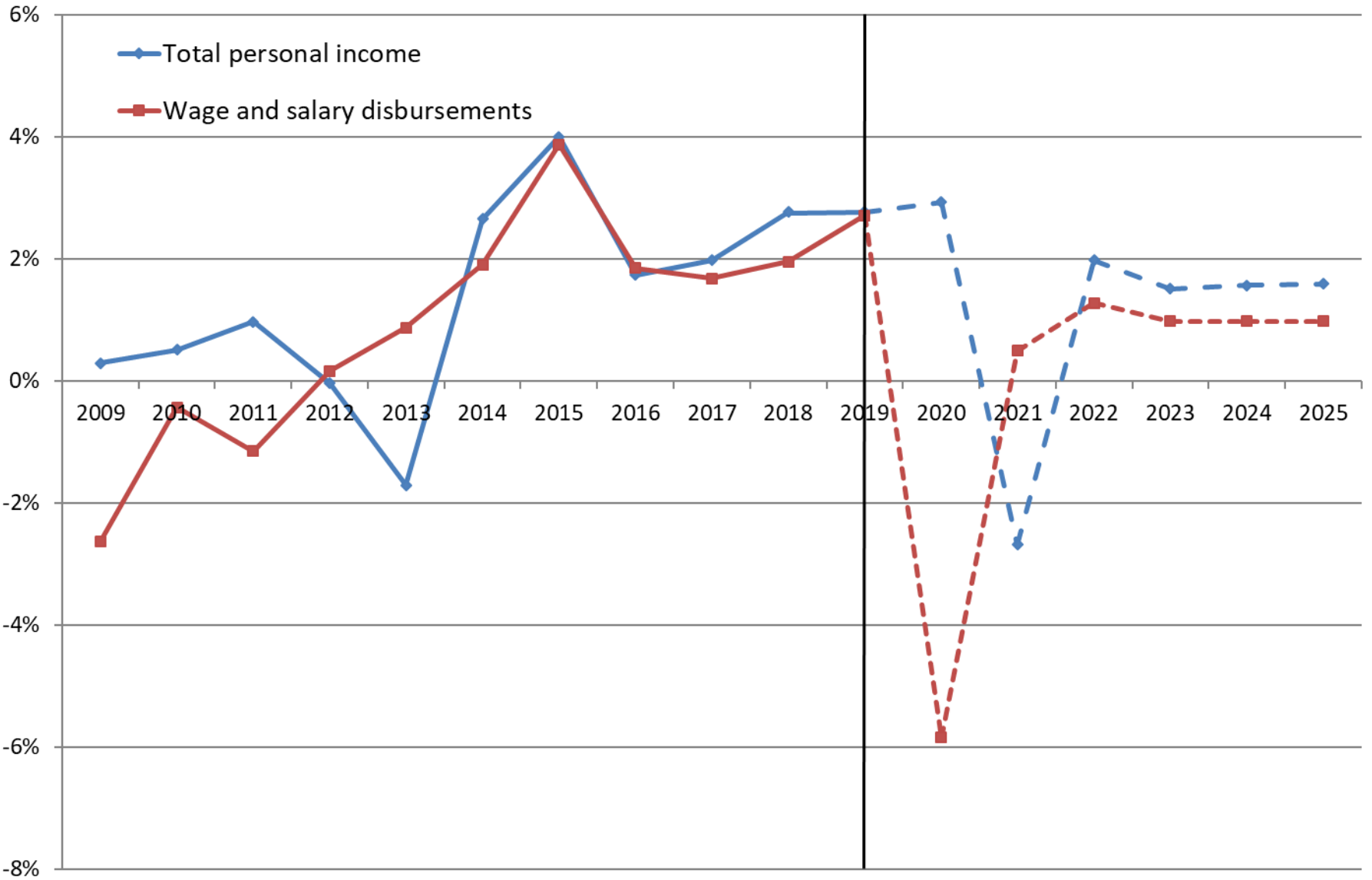
Leisure & hospitality has seen the most job losses since February (seasonally adjusted)

Sector/Area	Jobs (in thousands)			Net Change		Percent Change Since February
	Feb	June	July	Over Month	Since February	
Total Nonfarm Jobs	637.3	566.6	576.7	10.1	-60.6	-9.5%
Private Sector	535.7	474.3	478.6	4.3	-57.1	-11%
Leisure & Hospitality	69.9	41.7	47.3	5.6	-22.6	-32%
Manufacturing	53.2	48.4	44.9	-3.5	-8.3	-16%
Health Care & Social Assistance	107.3	99.1	99.8	0.7	-7.5	-7%
Professional & Business Services	68.2	65.0	64.4	-0.6	-3.8	-6%
Educational Services	22.7	19.1	19.1	0.0	-3.6	-16%
Other Services	23.1	20.3	20.0	-0.3	-3.1	-13%
Retail Trade	80.8	76.0	78.4	2.4	-2.4	-3%
Information	7.4	5.6	5.5	-0.1	-1.9	-26%
Financial Activities	33.3	31.7	31.7	0.0	-1.6	-5%
Wholesale Trade	19.1	18.3	18.1	-0.2	-1.0	-5%
Transportation, Warehousing & Utilities	18.5	17.7	17.7	0.0	-0.8	-4%
Construction, Mining & Logging	32.2	31.4	31.7	0.3	-0.5	-2%
Government	101.6	92.3	98.1	5.8	-3.5	-3%
Local Government	59.2	52.0	56.7	4.7	-2.5	-4%
State Government	25.7	23.5	23.5	0.0	-2.2	-9%
Federal Government	16.7	16.8	17.9	1.1	1.2	7%

Income and GDP

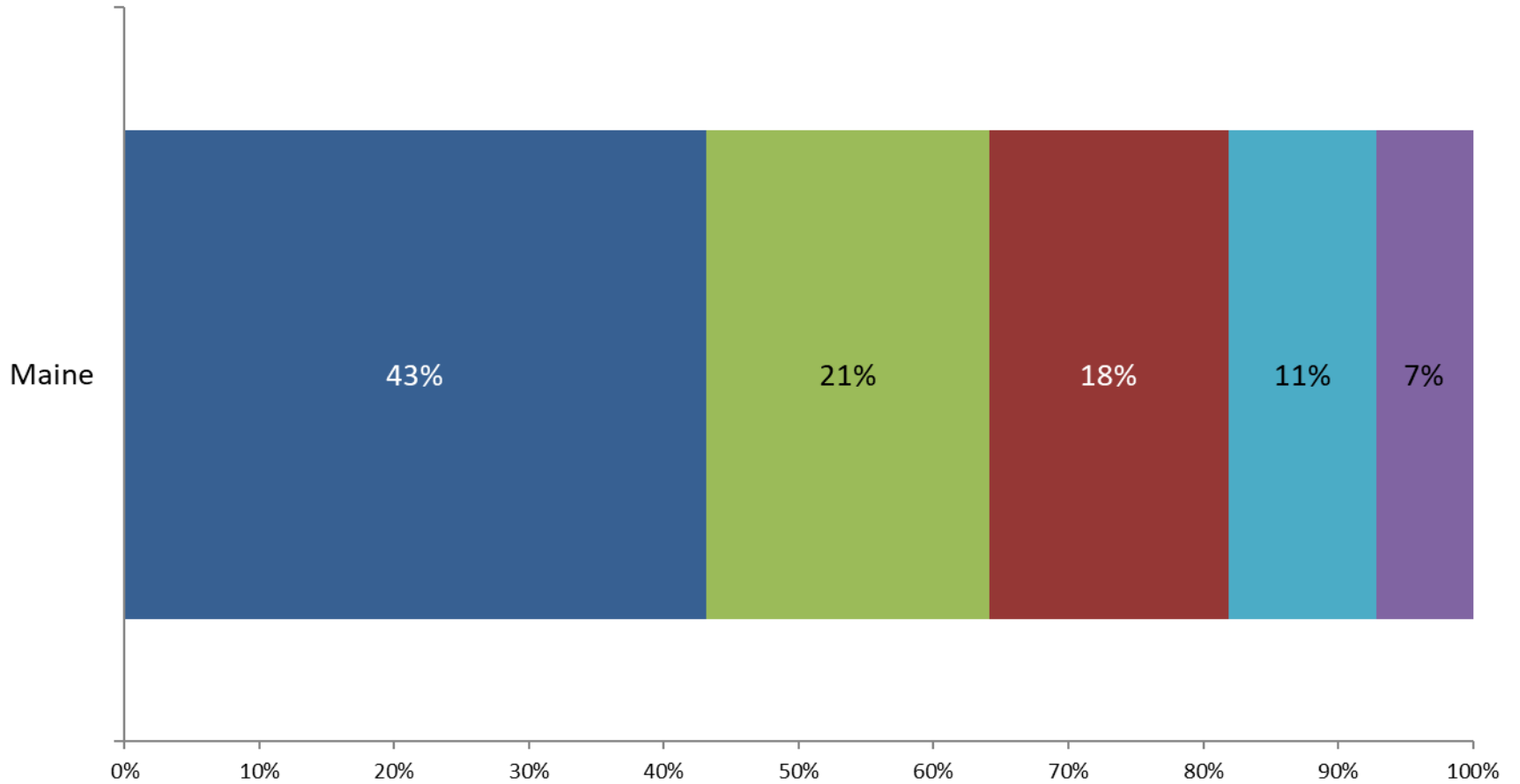


Percent Change in Real Personal Income, Maine 2009-2019 and forecast to 2025

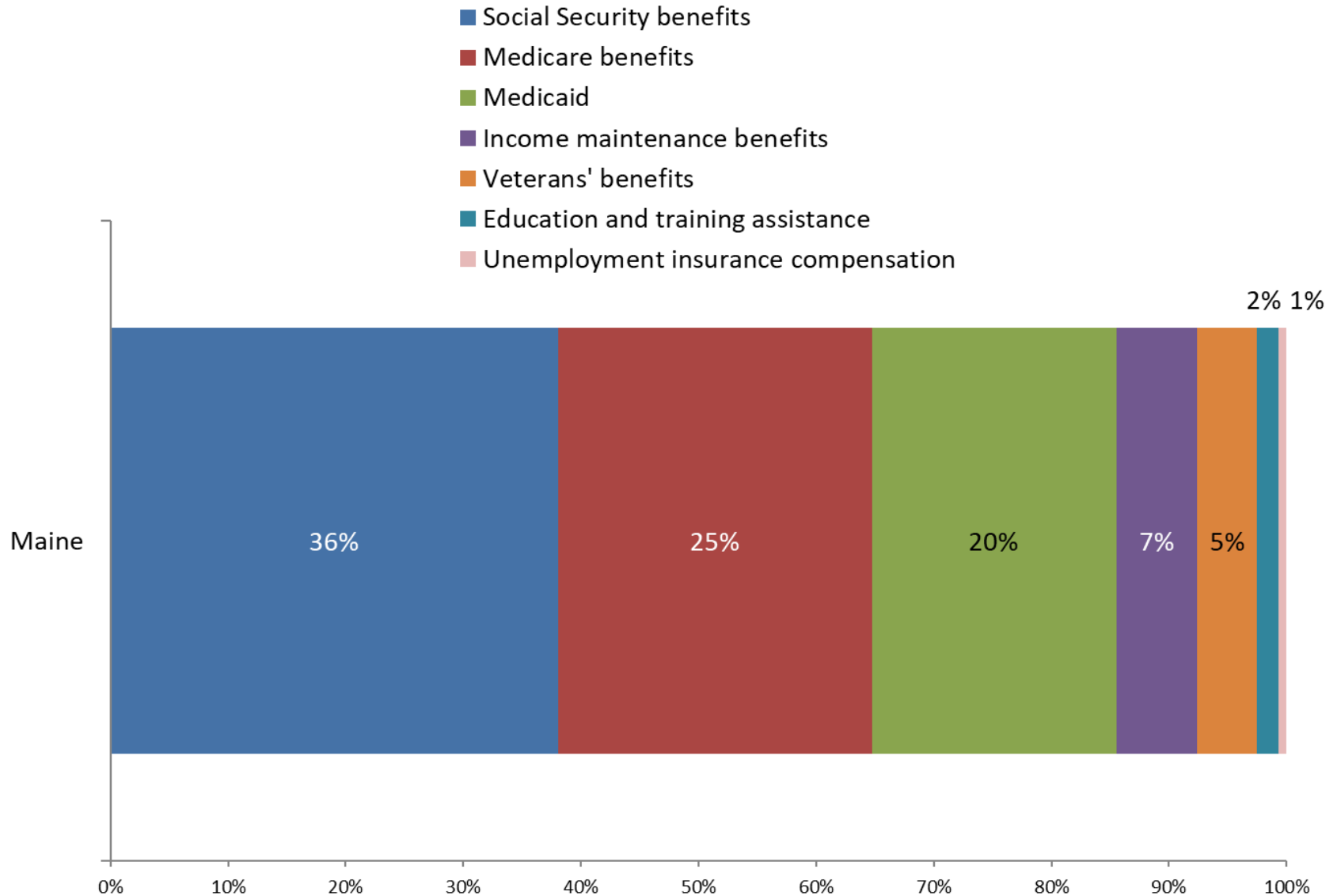


Major Components of Personal Income, 2019

- Wages and salaries
- Personal current transfer receipts
- Dividends, interest, and rent
- Supplements to wages and salaries
- Proprietors' income

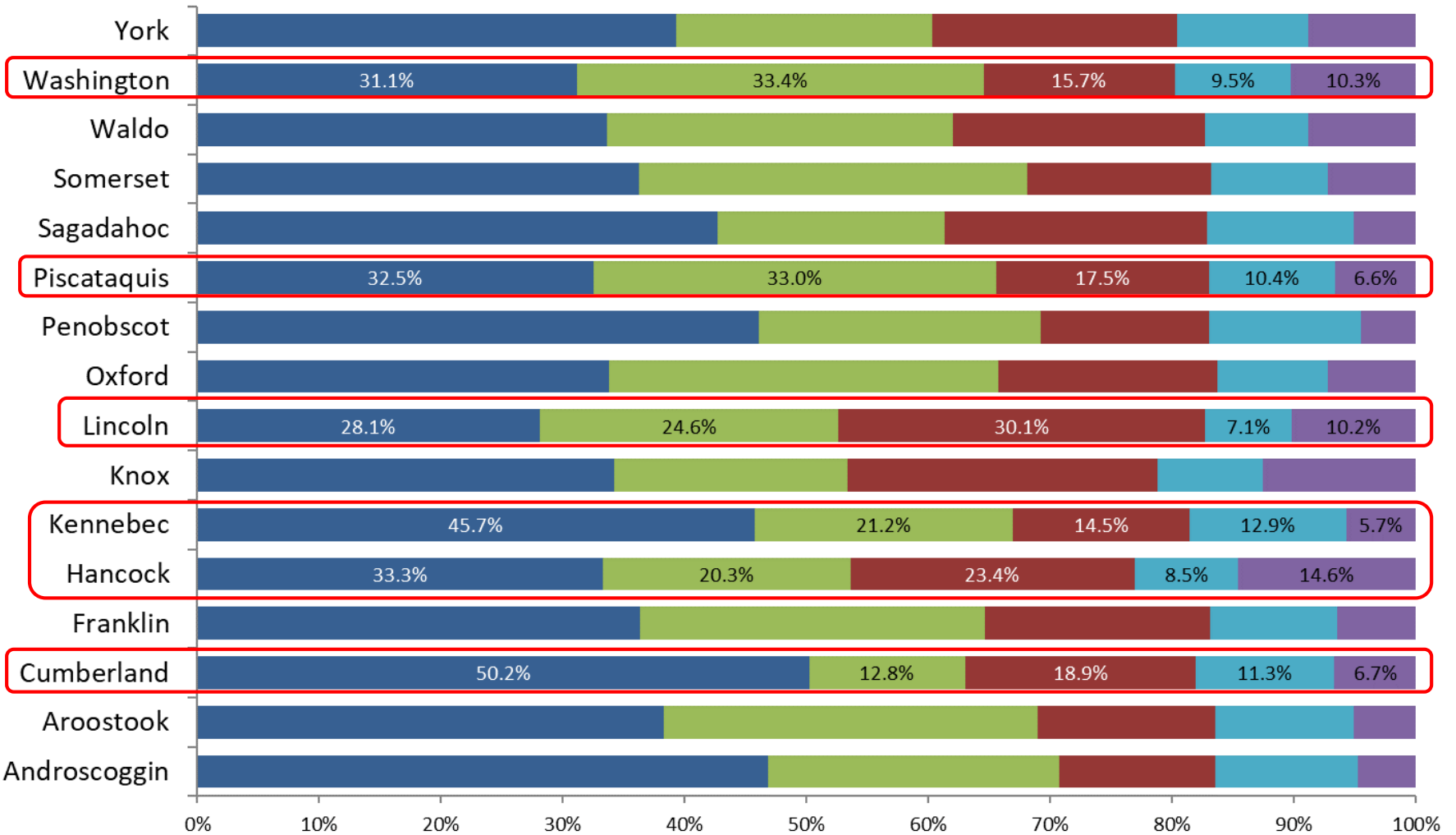


Components of Personal Current Transfer Receipts, 2018

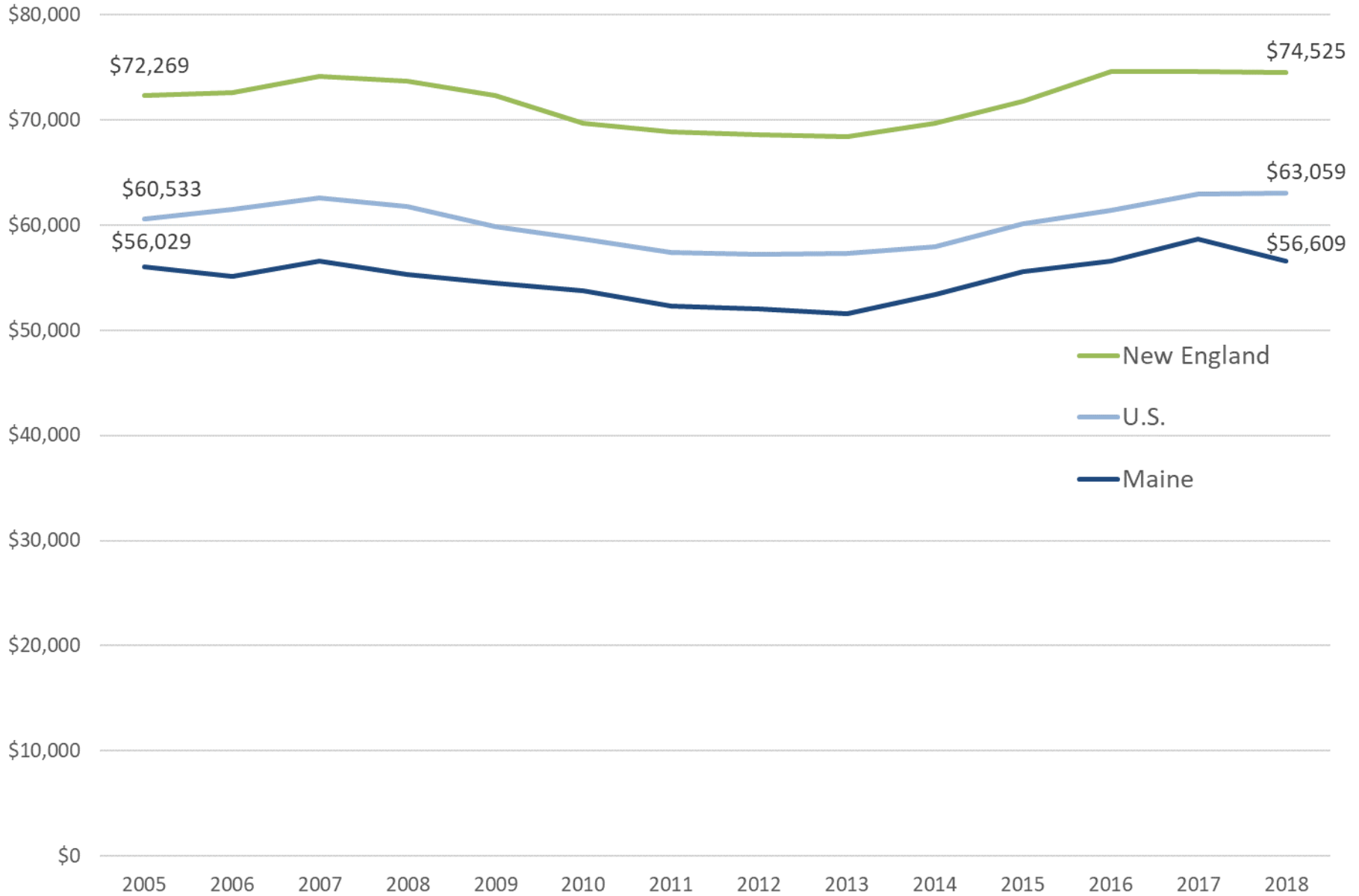


Major Components of Personal Income, 2018

■ Wages and salaries
 ■ Personal current transfer receipts
 ■ Dividends, interest, and rent
■ Supplements to wages and salaries
 ■ Proprietors' income

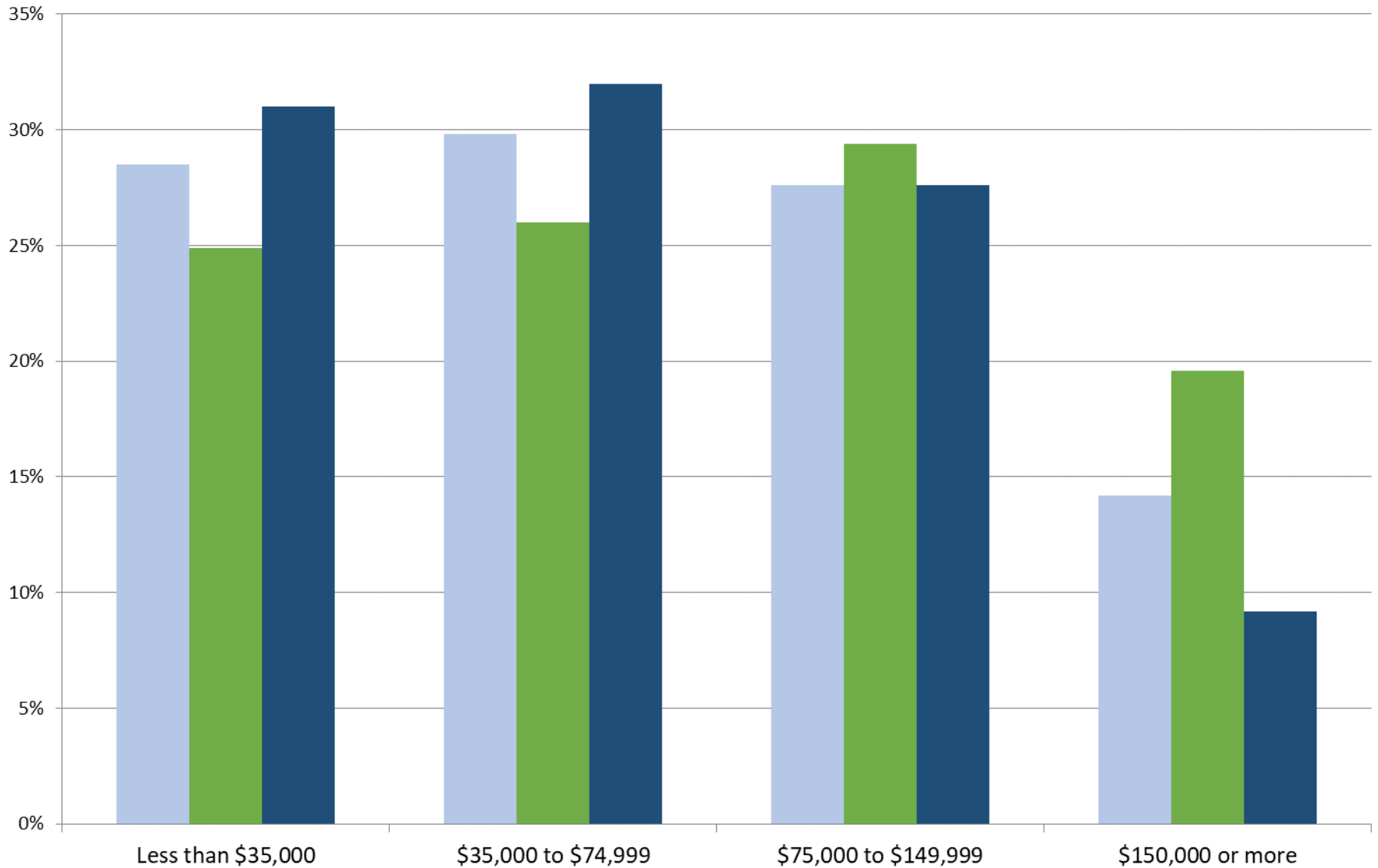


Real Median Household Income (in 2019 \$)

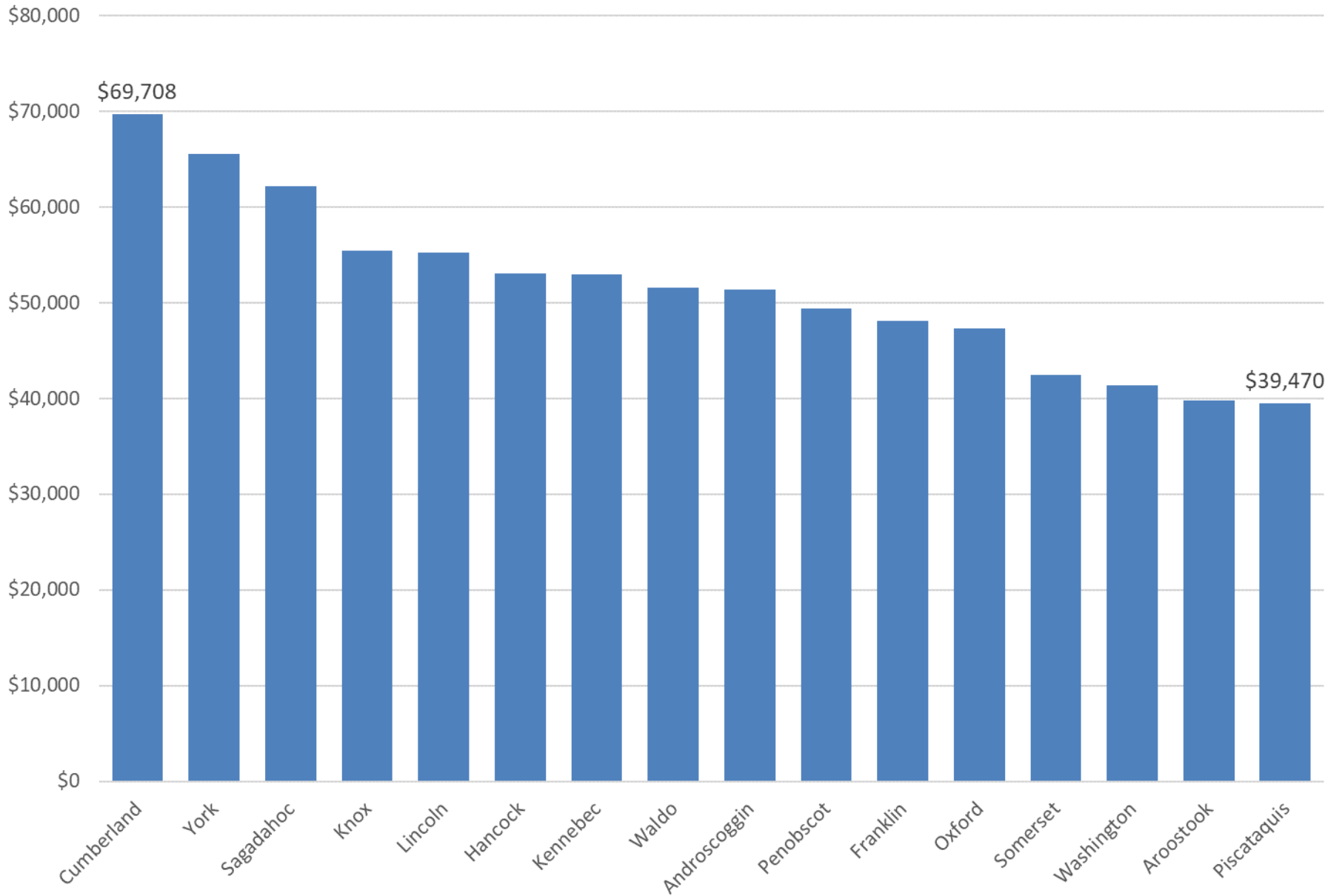


Percent of Households by Income Level, 2018

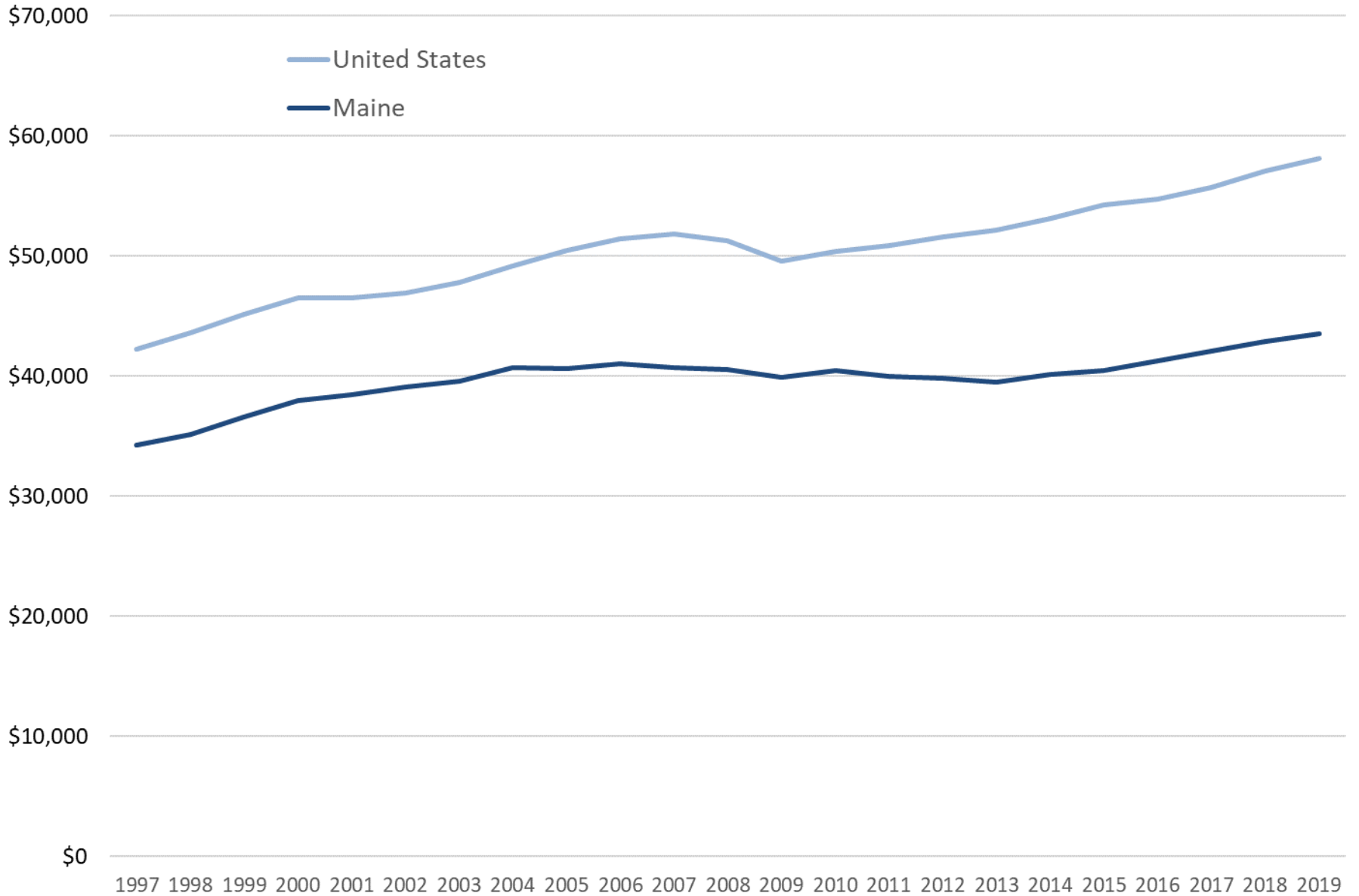
■ U.S. ■ New England ■ Maine



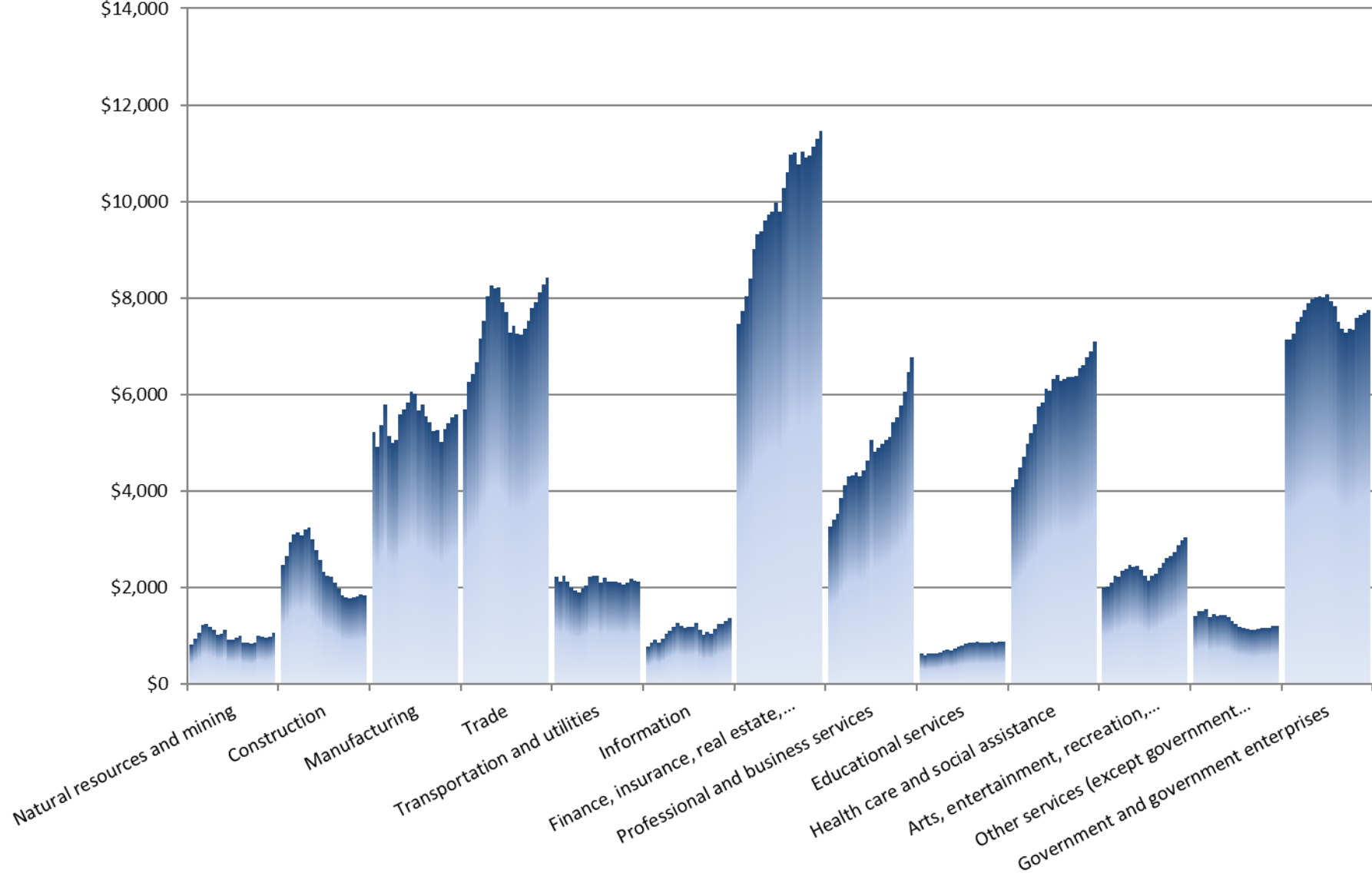
Median Household Income



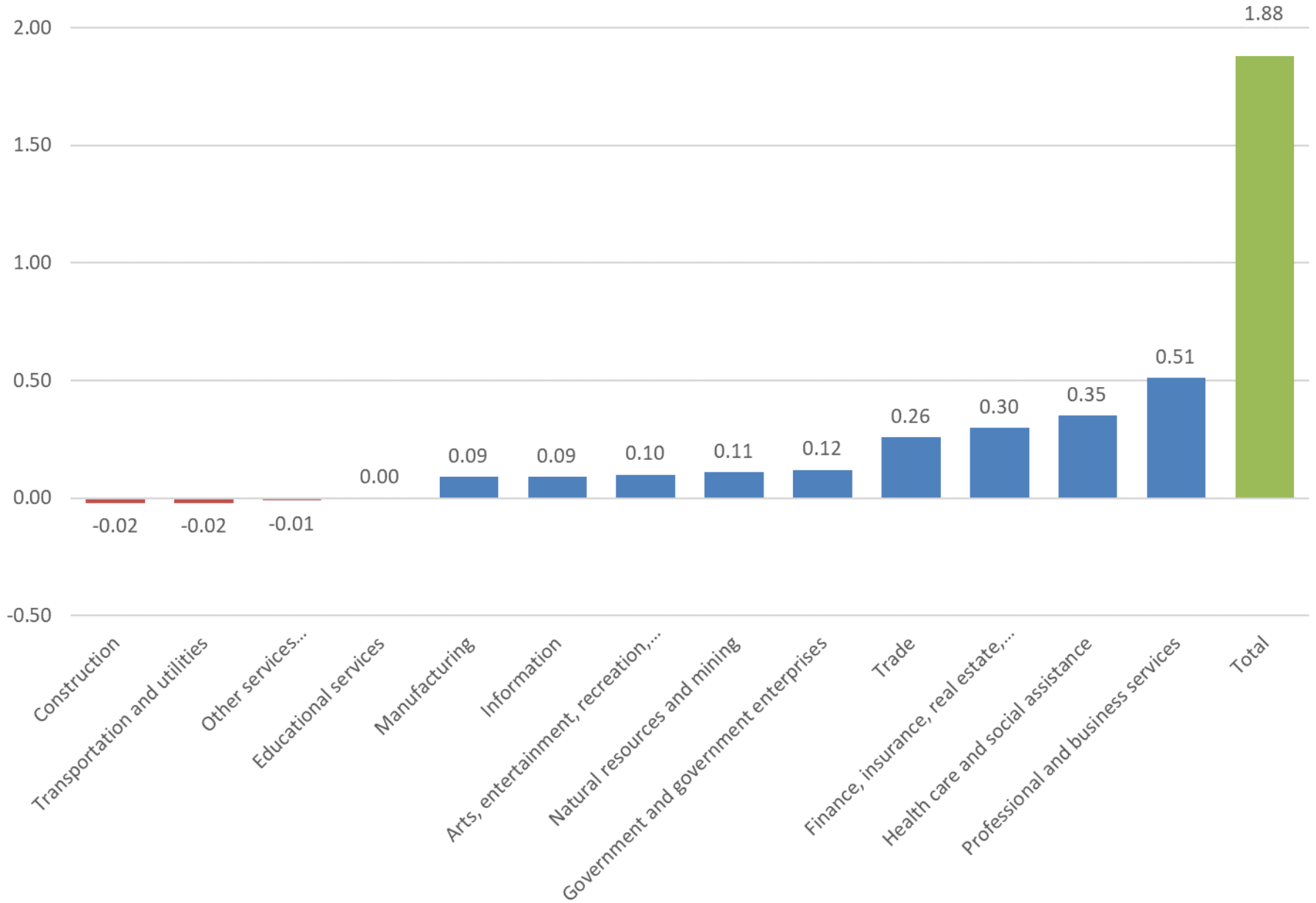
Per Capita Real Total GDP



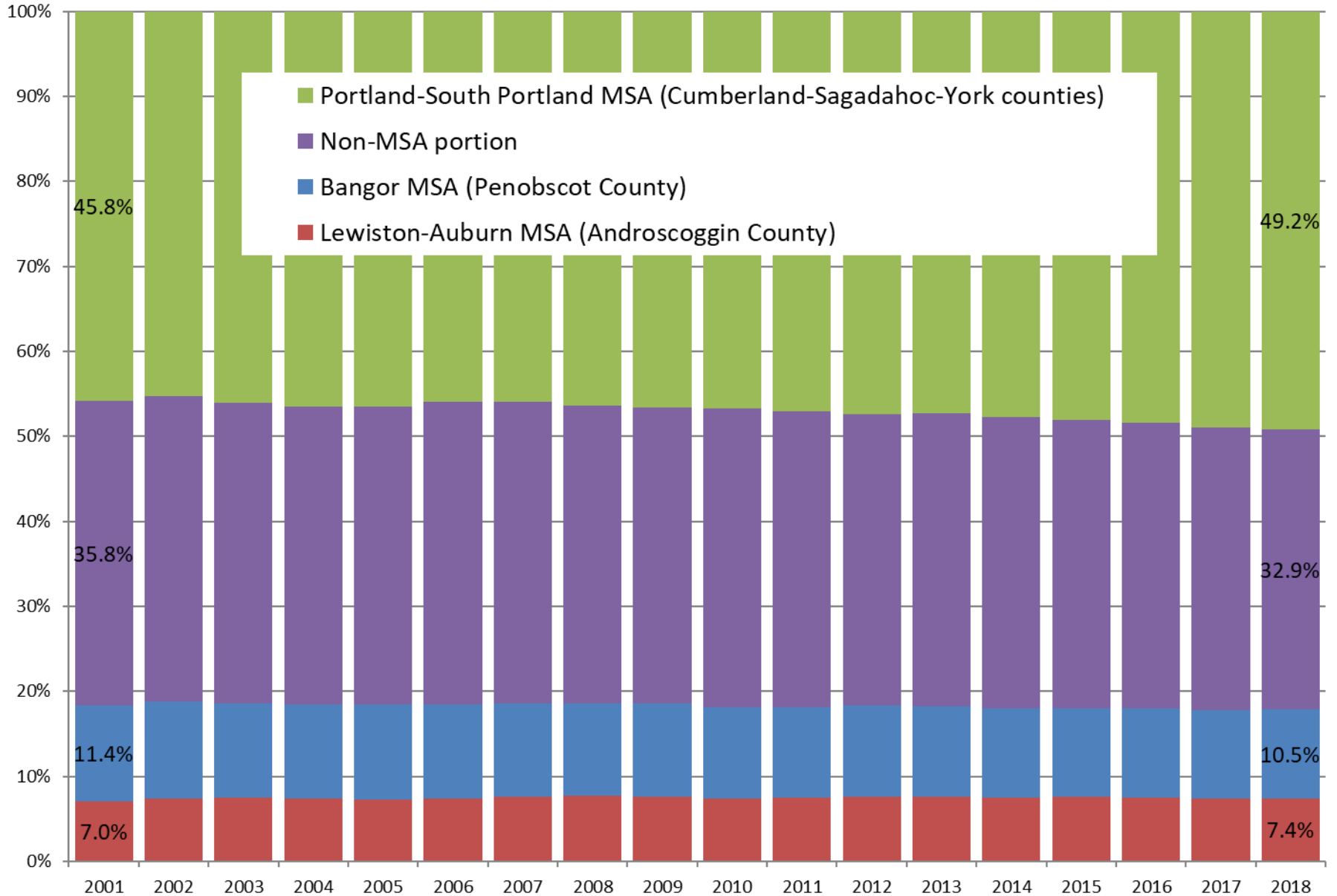
Maine Real GDP by Industry, 1997-2019 (in millions of chained 2012 dollars)



Contributions to Percent Change in Real GDP by Industry, 2019



Share of Maine Real GDP by Metropolitan Area



It's not too late to be counted in the 2020 census!

- Once a decade chance to count everyone in the country
- Sets the benchmark for all other demographic data
- Around \$7.5 billion of federal funds are distributed to Maine each year on the basis of census data
- For the first time, people can self-respond online, by phone, or by mail
- Census workers take a lifetime oath not to reveal any personal information – violating this oath results in a fine of up to \$250,000 and five years in prison

To respond go to <http://my2020census.gov>

Contact Information

40

Amanda Rector

Maine State Economist

Department of Administrative and Financial Services

amanda.rector@maine.gov

(207) 215-6095