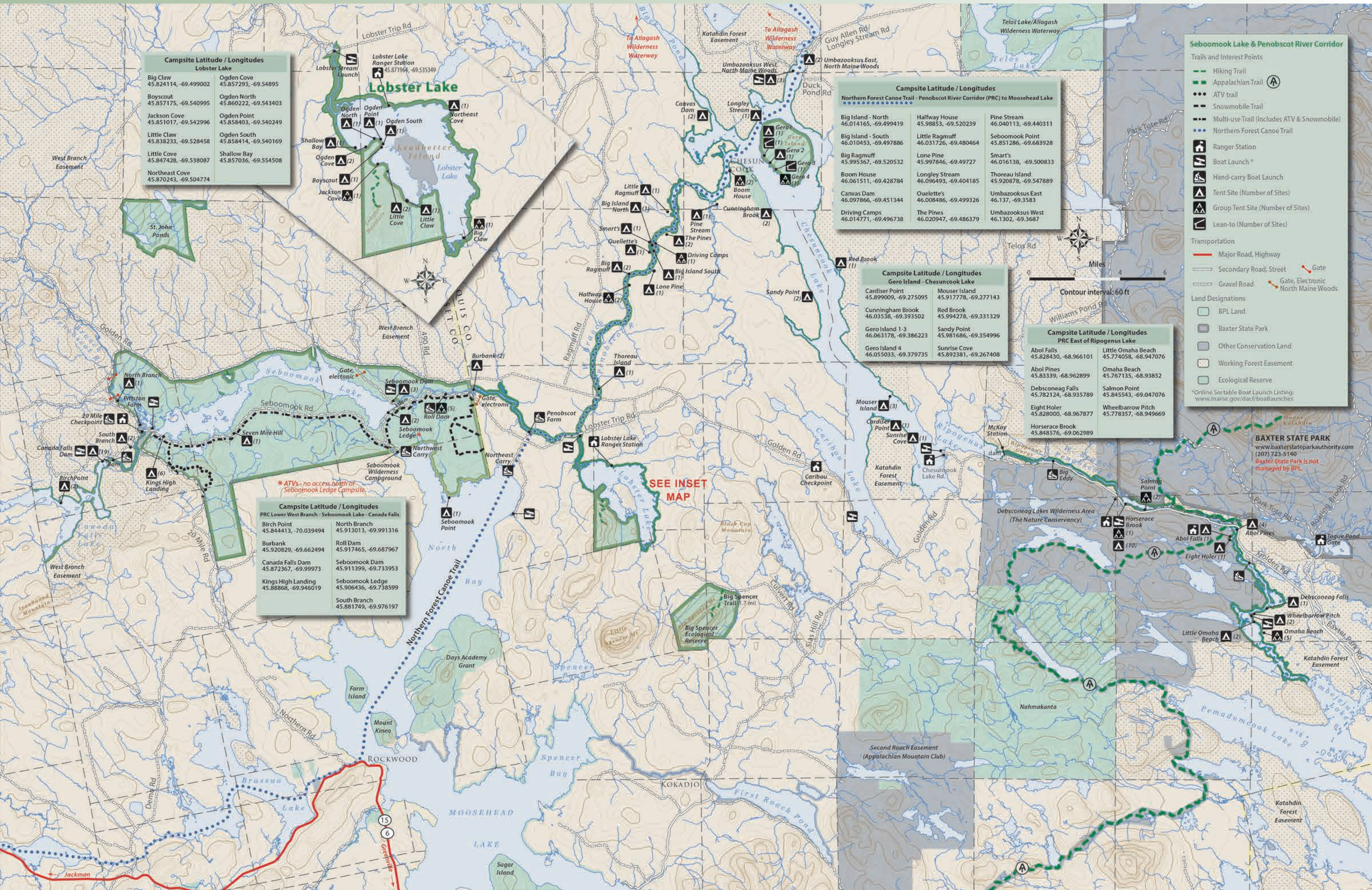


PENOBSCOT RIVER CORRIDOR AND SEBOOMOOK PUBLIC LANDS



Campsite Latitude / Longitudes
Lobster Lake

| | |
|---|--------------------------------------|
| Big Claw 45.824114, -69.499002 | Ogden Cove 45.857293, -69.54895 |
| Boyscout 45.857175, -69.540995 | Ogden North 45.860222, -69.543403 |
| Jackson Cove 45.851017, -69.542996 | Ogden Point 45.858403, -69.540249 |
| Little Claw 45.838233, -69.528458 | Ogden South 45.858414, -69.540169 |
| Little Cove 45.847428, -69.538087 | Shallow Bay 45.857036, -69.554508 |
| Northeast Cove 45.870243, -69.504774 | |

Campsite Latitude / Longitudes
Northern Forest Canoe Trail - Penobscot River Corridor (PRC) to Moosehead Lake

| | | |
|---|---|--|
| Big Island - North 46.014165, -69.499419 | Halfway House 45.98853, -69.520239 | Pine Stream 46.040113, -69.440311 |
| Big Island - South 46.010453, -69.497886 | Little Ragmuff 46.031726, -69.480464 | Seboomook Point 45.851286, -69.683928 |
| Big Ragmuff 45.995367, -69.520532 | Lone Pine 45.997846, -69.49727 | Smart's 46.016138, -69.500833 |
| Boom House 46.061511, -69.428784 | Longley Stream 46.096493, -69.404185 | Thoreau Island 45.920878, -69.547889 |
| Canvas Dam 46.097866, -69.451344 | Ouellette's 46.008486, -69.499326 | Umbazooksus East 46.137, -69.3583 |
| Driving Camps 46.014771, -69.496738 | The Pines 46.020947, -69.486379 | Umbazooksus West 46.1302, -69.3687 |

Campsite Latitude / Longitudes
Gero Island - Chesuncook Lake

| | |
|--|--|
| Cardiser Point 45.899009, -69.275095 | Mouser Island 45.917778, -69.277143 |
| Cunningham Brook 46.03538, -69.393502 | Red Brook 45.994278, -69.331329 |
| Gero Island 1-3 46.063178, -69.386223 | Sandy Point 45.981686, -69.354996 |
| Gero Island 4 46.055033, -69.379735 | Sunrise Cove 45.892381, -69.267408 |

Campsite Latitude / Longitudes
PRC Lower West Branch - Seboomook Lake - Canada Falls

| | |
|--|--|
| Birch Point 45.844413, -70.039494 | North Branch 45.913013, -69.991316 |
| Burbank 45.920829, -69.662494 | Roll Dam 45.917465, -69.687967 |
| Canada Falls Dam 45.872367, -69.99973 | Seboomook Dam 45.911399, -69.733953 |
| Kings High Landing 45.88868, -69.946019 | Seboomook Ledge 45.906436, -69.738599 |
| | South Branch 45.881749, -69.976197 |

Seboomook Lake & Penobscot River Corridor

Trails and Interest Points

- Hiking Trail
- Appalachian Trail
- ATV trail
- Snowmobile Trail
- Multi-use Trail (Includes ATV & Snowmobile)
- Northern Forest Canoe Trail
- Ranger Station
- Boat Launch *
- Hand-carry Boat Launch
- Tent Site (Number of Sites)
- Group Tent Site (Number of Sites)
- Lean-to (Number of Sites)

Transportation

- Major Road, Highway
- Secondary Road, Street
- Gravel Road
- Gate
- Gate, Electronic
- North Maine Woods

Land Designations

- BPL Land
- Baxter State Park
- Other Conservation Land
- Working Forest Easement
- Ecological Reserve

*Online Sortable Boat Launch Listing:
www.maine.gov/dac/boatlaunches

NEARBY DESTINATIONS

The Penobscot River Corridor lies within the Maine Highlands Region that encompasses Baxter State Park and other notable North Woods attractions in Piscataquis County:

Moosehead Lake Shoreline Lands encompass several significant parcels along Moosehead Lake, including the renowned Mount Kineo with 5 miles of hiking trails.

Nahmakanta Public Lands, spanning more than 43,000 acres, offers lakeside camping and hiking trails (including 12 of the most scenic miles along the Appalachian Trail).

Allagash Wilderness Waterway has 92 miles of spectacular canoeing and fishing along Maine's only designated "National Scenic and Wild River."

Baxter State Park, with more than 200,000 acres and 46 mountain peaks (including Mt. Katahdin), provides abundant hiking, boating and camping opportunities and is the northern terminus of the Appalachian Trail.

Debscoveag Lakes Wilderness Area (The Nature Conservancy), spanning 46,271 acres, contains mature forests and the highest concentration of pristine, remote ponds in New England.