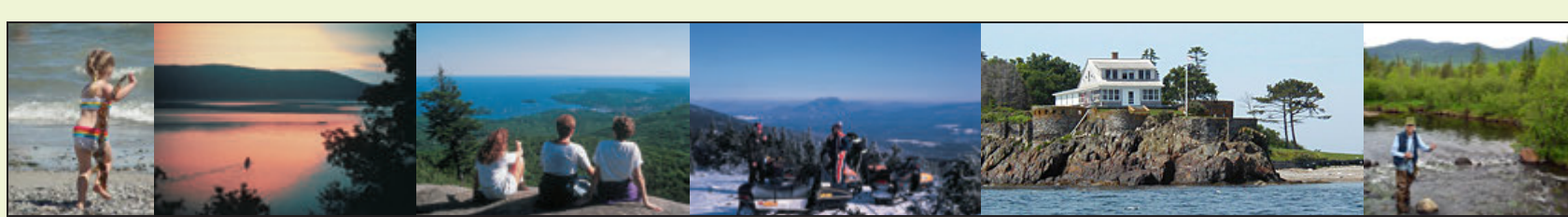


# Outdoors in Maine

Your mini-guide to Maine State Parks, Public Lands, and Historic Sites





State Parks				Camping	Hot Showers	Historic	Snack Bar	Scenic Road	Ponchobing	Swimming	Boat launching	Fishing	Snowmobiling	Fee Charged	Dumping Station	Trails*	Approximate Opening & Closing Dates**
Town or County	Location	Map Grid Reference	Acreage														
Allagash Wilderness Waterway	Aroostook & Piscataquis	F2-F4	24,164	●	●												Open All Year Season Pass Not Accepted
Androscoggin Riverlands	Turner	C11	2,674														Open All Year
Aroostook	Presque Isle	I3	898	●	●												Open All Year Camping May 15-Oct 15
Birch Point	Owls Head	F12	62														Memorial Day to Labor Day
Bradbury Mountain	Pownall	D12	730														Open All Year Camping May 15-Oct 15
Camden Hills	Camden	F11	5,710	●	●												Open All Year Camping May 15-Oct 15
Cobscook Bay	Dennysville	K9	871	●	●												Open All Year Camping May 15-Oct 15
Crescent Beach	Cape Elizabeth	D13	242														Open All Year
Damariscotta Lake	Jefferson	E11	19														Memorial Day - Labor Day
Ferry Beach	Saco	C13	117														Memorial Day - September 30
Fort Point (Fort Pownall)	Stockton Springs	G10	156														May 15 - October 15
Grafton Notch	Grafton Township	B10	3,129														May 15 - September 30
Holbrook Island Sanctuary	Brooksville	G11	1,345														Open All Year
Lake St. George	Liberty	F10/F11	358	●	●												Open All Year Camping May 15-Oct 15
Lamoine	Lamoine	H10	55	●	●												May 15 - October 15 Camping May 15-Oct 15
Lily Bay	Beaver Cove	E6	924	●	●												Open All Year Camping May 15-Oct 15
Mackworth Island	Falmouth	D13	100														Open All Year
Moose Point	Searsport	G10	146														Memorial Day - October 1
Mount Blue	Weld	C9	7,489	●	●												Open All Year Camping May 15-Oct 15
Mount Kineo	Kineo Twp.	E6	800														Open All Year
Owls Head	Owls Head	F11	13														Open All Year
Peaks-Kenny	Dover-Foxcroft	F7	813	●	●												May 15 - October 1 Camping May 15-Oct 1
Penobscot Narrows Observatory	Prospect	G10	5														May 1 - October 31 Season Pass Not Accepted
Penobscot River Corridor	Piscataquis	E5-G5	12,500	●	●												Open All Year
Popham Beach	Phippsburg	D13	605														Open All Year
Quoddy Head	Lubec	L9	541														May 15 - October 15
Range Pond	Poiland	C12	740														Open All Year
Rangleley Lake	Rangleley	B9	870	●	●												May 1 - October 15 Camping May 15-Oct 1
Reid	Georgetown	F12	770														Open All Year
Roque Bluffs	Roque Bluffs	J10	274														May 15 - October 1
Scarborough Beach	Scarborough	C13	67														April - October Season Pass Not Accepted
Sebago Lake	Naples	C12	1,342	●	●												Open All Year Camping May 1-Oct 15
Shackford Head	Eastport	L9	87														Open All Year
Swan Lake	Swanville	G10	67														Memorial Day - Labor Day
Two Lights	Cape Elizabeth	D13	41														Open All Year
Vaughan Woods	South Berwick	B14	165														Memorial Day - Columbus Day
Warren Island	Islesboro	G11	70														Memorial Day - Sept 15 Camping Memorial Day-Sept 15
Wolfe's Neck Woods	Freeport	D12	244														Open All Year

Public Lands				Visit Year Round	Trails	Shared Use Roads	Boat Launches	Picnic Areas
Amherst Mountains Community Forest	Amherst	H9	5,000	●	●	●	●	●
Bald Mountain	Franklin	B8	1,873	●	●	●	●	●
Baker Lake	Somerset	D4/5	1,620	●	●	●	●	●
Bigelow Preserve	Somerset & Franklin	C8	36,000	●	●	●	●	●
Big Spencer Mountain	Piscataquis	E6	4,135	●	●	●	●	●
Bradley	Penobscot	G9/H9	9113	●	●	●	●	●
Chain of Ponds	Franklin	B7	1,119	●	●	●	●	●
Chamberlain Lake	Piscataquis	E4/F4	10,290	●	●	●	●	●
Cutler Coast	Washington	K9	12,238	●	●	●	●	●
Days Academy	Piscataquis	E6	7,309	●	●	●	●	●
Dead River	Somerset	D8	7,031	●	●	●	●	●
Deboullie	Aroostook	G2	21,871	●	●	●	●	●
Dodge Point	Lincoln	E12	548	●	●	●	●	●
Donnell Pond	Hancock	I10	15,391	●	●	●	●	●
Duck Lake	Hancock & Washington	I8	25,220	●	●	●	●	●
Eagle Lake	Aroostook	H1	24,416	●	●	●	●	●
Four Ponds	Franklin	C9	6,018	●	●	●	●	●
Gero Island	Piscataquis	F5	4,051	●	●	●	●	●
Great Heath	Washington	I9	6,207	●	●	●	●	●
Holeb	Somerset	G6/C7	20,155	●	●	●	●	●
Kennebec Highlands	Kennebec & Franklin	D10	6,076	●	●	●	●	●
Little Moose	Piscataquis	E7	15,055	●	●	●	●	●
Machias River Corridor	Washington	I,J,K/8,9	10,026	●	●	●	●	●
Mahosucs	Oxford	B10	31,807	●	●	●	●	●
Moosehead Lake	Piscataquis	E6	14,500	●	●	●	●	●
Mount Abraham	Franklin	C8	6,214	●	●	●	●	●
Nahmakanta	Cumberland	F6	43,966	●	●	●	●	●
Pineland	Oxford	D12	646	●	●	●	●	●
Richardson	Oxford	B8	22,728	●	●	●	●	●
Rocky Lake	Washington	J9/K9	11,150	●	●	●	●	●
Rocky Lake	Washington	F2	20,349	●	●	●	●	●
Round Pond	Aroostook	F2	20,349	●	●	●	●	●
Soragly Lake	Penobscot	G4	9,092	●	●	●	●	●
Soppan	Aroostook	I3	20,135	●	●	●	●	●
Sebobeis	Piscataquis & Penobscot	G7	21,369	●	●	●	●	●
Seboomook	Somerset	D,E/5,6	41,500	●	●	●	●	●
Telos	Piscataquis	F4	22,962	●	●	●	●	●
Tumbledown	Franklin	C9	10,555	●	●	●	●	●

State Historic Sites				Approximate Opening & Closing Dates**
Bible Point	Aroostook	I5	27	Memorial Day - Labor Day
Colonial Pemaquid (Ft. William Henry)	Bristol	E12	19	Memorial Day - Labor Day
Eagle Island	S. Harpswell	D13	17	June 15 - Labor Day
Fort Baldwin	Popham Beach / Phippsburg	E13	10	May 1 - September 30
Fort Edgecomb	Edgecomb	E12	3	Memorial Day - Labor Day
Fort Halifax	Winslow	E10	0.75	Open All Year
Fort Kent	Fort Kent	H1	3	Memorial Day - September 30
Fort Knox	Prospect	G10	124	May 1 - October 31
Fort McClary	Kittery Point	B15	27	Memorial Day - Columbus Day
Fort O'Brien	Machiasport	K9	2	Memorial Day - September 30
Fort Pownall (Fort Point State Park)	Stockton Springs	G10	3	May 15 - October 15
Fort Popham	Popham Beach / Phippsburg	E13	4	Memorial Day - Labor Day
John Paul Jones	Kittery	B15	2	Open All Year
Katahdin Iron Works	T6R9	F7	23	Open All Year
Whaleback Shell Midden	Damariscotta	E12	11	May 15 - October 15

This brochure was made possible in part by funding assistance through the Federal Highway Administration's Recreational Trails Program (RTP), administered by the Maine Bureau of Parks and Lands.



Camping Reservations at State Parks..... [www.campwithme.com](http://www.campwithme.com)  
 Within Maine 1-800-332-1501 / Outside Maine (207) 624-9950 / TTY: Maine Relay 711  
 State Park Passes..... [www.maine.stateparkpass.com](http://www.maine.stateparkpass.com)  
 ATV Trails & Information..... [www.maine.gov/dacf/atv](http://www.maine.gov/dacf/atv)  
 Boat Launches - Sortable Online Listing..... [www.maine.gov/dacf/boatlaunches](http://www.maine.gov/dacf/boatlaunches)  
 Snowmobile Trails & Information..... [www.maine.gov/dacf/snowmobile](http://www.maine.gov/dacf/snowmobile)  
 Waterways:  
 Allagash Wilderness Waterway..... [www.maine.gov/allagashwildernesswaterway](http://www.maine.gov/allagashwildernesswaterway)  
 Penobscot River Corridor..... [www.maine.gov/penobscotrivercorridor](http://www.maine.gov/penobscotrivercorridor)

Get the complete  
 Outdoors in Maine  
 brochure during  
 the summer at  
 Maine State Parks.