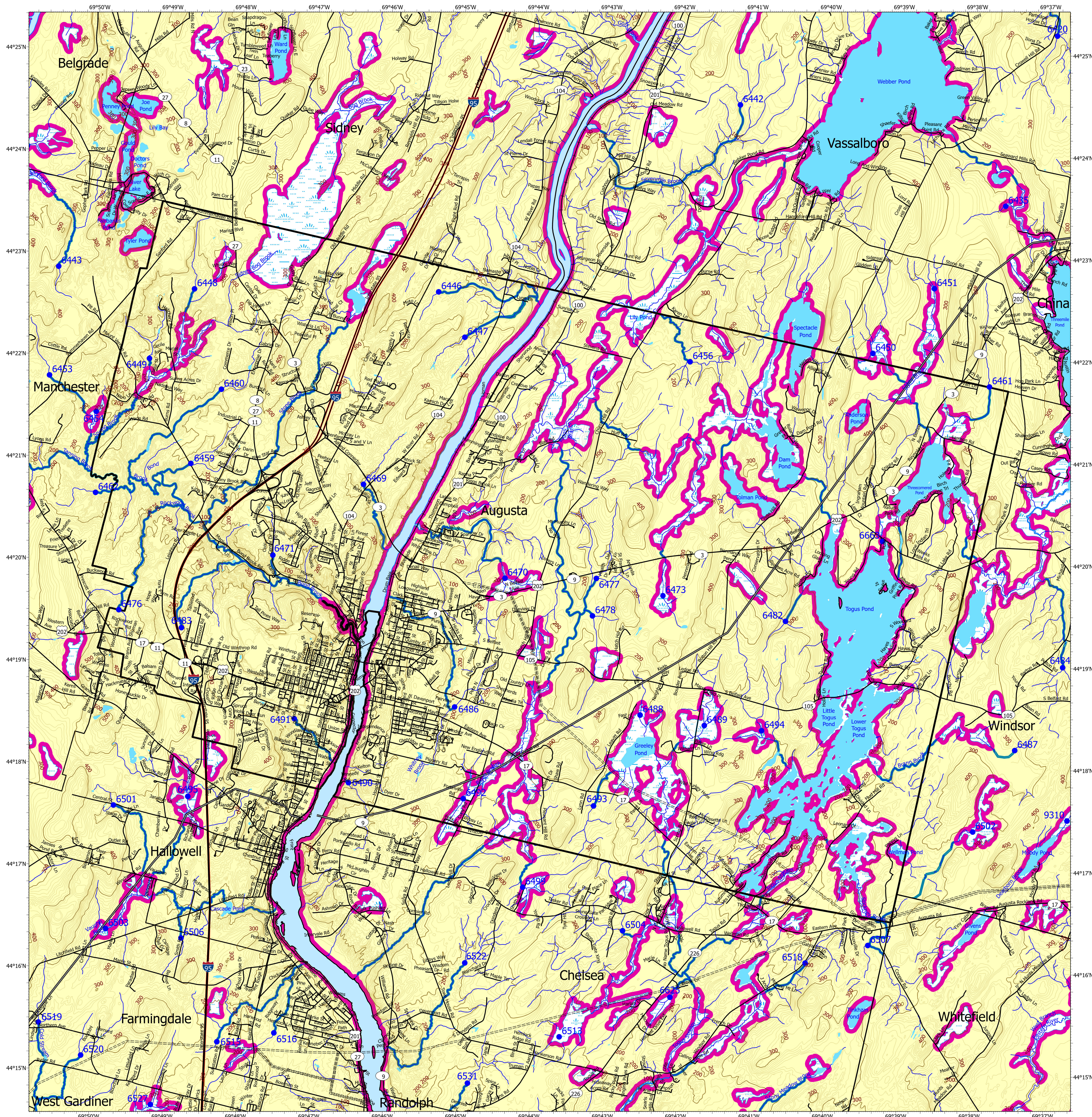


Statewide Standards for Timber Harvesting in the Shoreland Area* Map



This map is ADVISORY, for planning purposes only. Actual ground conditions and water body locations determine where and how MFS timber harvesting rules apply. Contact the MFS for additional information/assistance from a MFS Forester.

Wetlands

- Non-forested Wetlands Greater Than 10 acres (Lacustrine, Palustrine)
- Emergent or Marine Wetland

Department of Agriculture, Conservation and Forestry
Maine Forest Service

Maine Forest Service

For additional information, please contact the MFS at:
1-207-287-2791 or 1-800-367-0223 (in-State)
Email us at: forestinfo@maine.gov
or on the web at: www.maine-forestservice.gov



- SWS Town
- Outside Maine
- LUPC - Unorganized or Deorganized Town
- FON Town
Statewide Standard Rules do not apply (Town/DEP Standards apply)

Forest Operation Notification & Shoreland Area* Map

Augusta

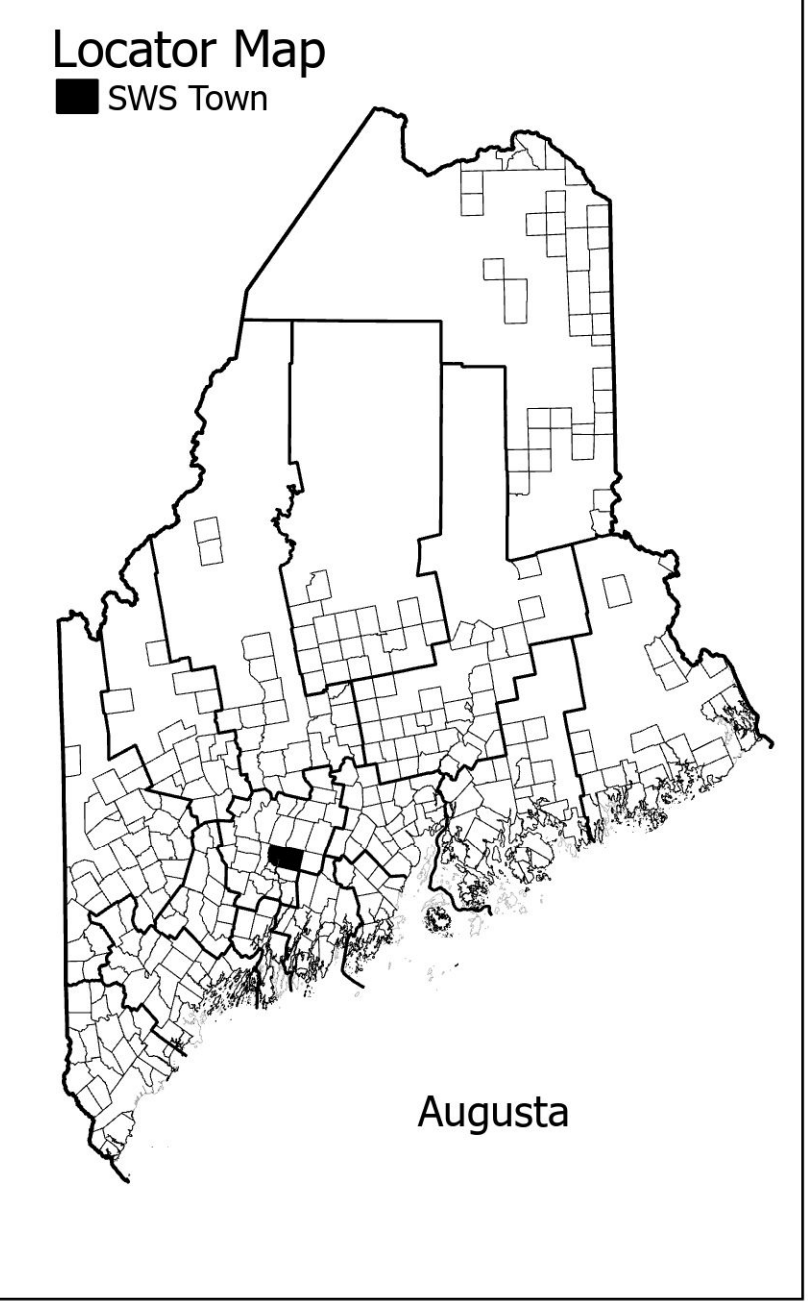
Drainage Points

- 1234 300 Acre Drainage Point (start of the 75ft buffer)
1234 - ID Number (location info)
- 56 25 Square Mile Drainage Point (start of the 250 ft buffer)
56 - ID Number (location info)

Adoption Date
9/14/2017

Buffers

- 250 Foot Buffer Zones
Great Ponds
Non-forested Wetlands greater than 10 acres
Rivers below the 25 square mile drainage point
Coastal wetlands
Tidal Waters
- 75 Foot Buffer Zones
Streams between the 300 acre drainage point and the 25 square mile drainage point
- Shoreline Integrity - Streams draining less than 300 acres, ponds and non-forested wetlands greater than 0.1 acres and less than 10 acres



August 2025

1 0.5 0 1 2 3 Miles