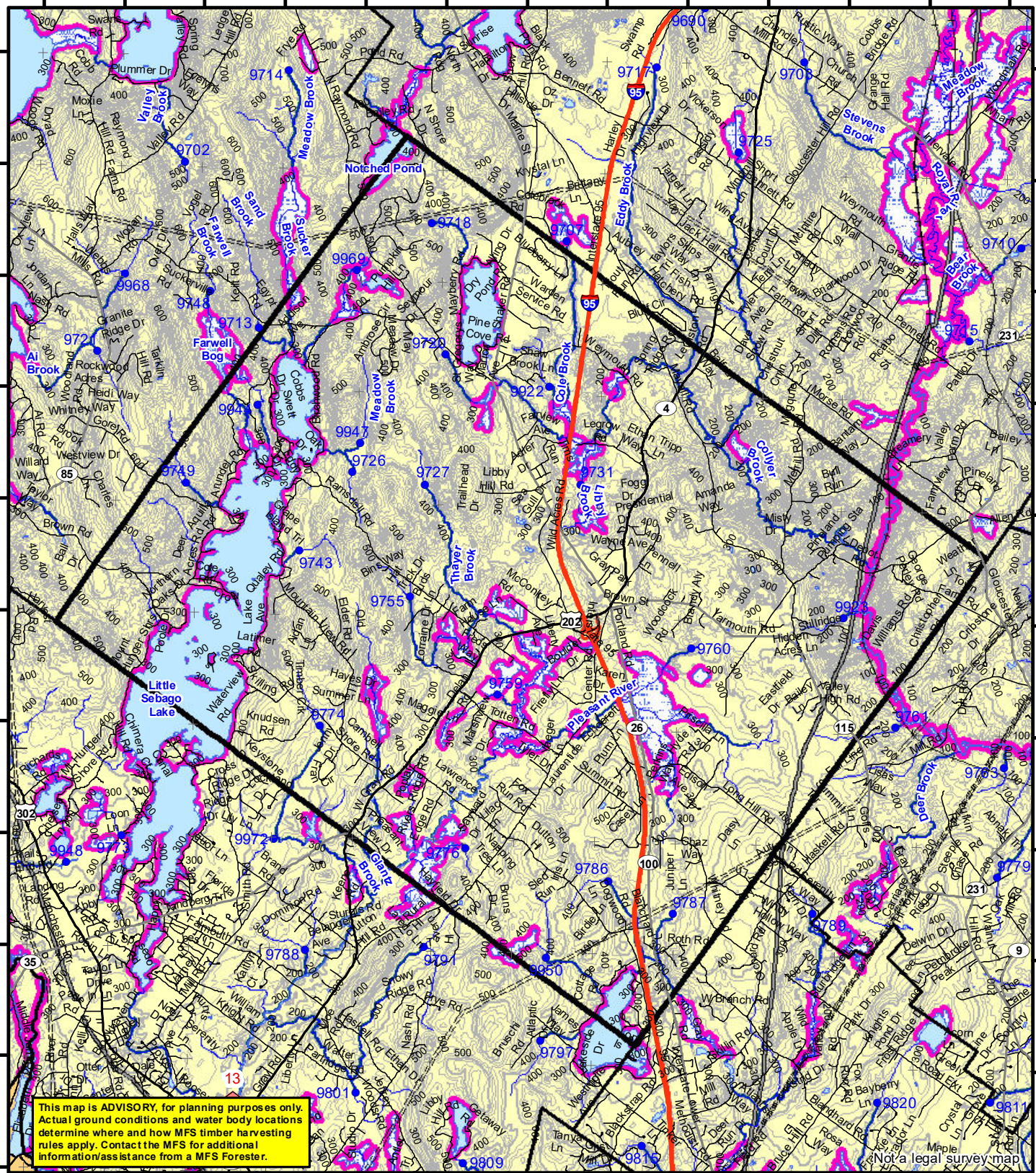


70°27'0"W 70°26'0"W 70°25'0"W 70°24'0"W 70°23'0"W 70°22'0"W 70°21'0"W 70°20'0"W 70°19'0"W 70°18'0"W 70°17'0"W 70°16'0"W 70°15'0"W

43°58'0"N  
43°57'0"N  
43°56'0"N  
43°55'0"N  
43°54'0"N  
43°53'0"N  
43°52'0"N  
43°51'0"N  
43°50'0"N  
43°49'0"N  
43°48'0"N



This map is ADVISORY, for planning purposes only. Actual ground conditions and water body locations determine where and how MFS timber harvesting rules apply. Contact the MFS for additional information/assistance from a MFS Forester.

### Statewide Standards

**Buffers**

- 250 Foot Buffer Zones
  - Great Ponds
  - Non-forested Wetlands greater than 10 acres
  - Rivers below the 25 square mile drainage point
  - Coastal Wetlands
  - Tidal Waters
  - Essential Wildlife Habitat (Least Tern, Roseate Tern, Piping Plover)
- 75 Foot Buffer Zones - Streams between the 300 acre drainage point and the 25 square mile drainage point
- Shoreline Integrity - Streams draining less than 300 acres, ponds and Non-forested Wetlands greater than 0.1 acres and less than 10 acres
- Shoreline Integrity also applies to UNMAPPED streams and wetlands.

**Habitat**

- Essential Wildlife Habitat (Least Tern, Roseate Tern, Piping Plover)

### Forest Operation Notification & Shoreland Area\* Map

# Gray

Adoption Date  
10/23/2009

December 2021

\*See MFS Rule - Chapter 2.1 for additional information.

Department of Agriculture, Conservation and Forestry  
Maine Forest Service  
Forest Policy & Management

**Roads**

- Interstate
- US Highway
- State Highway
- 24k Roads

**Hydrology**

- Pond or Lake
- River
- Estuary

**Streams**

- Stream

**Contours**

- 20 ft
- 100 ft

**Utilities**

- Electric
- Pipeline
- Railroad
- Airfield

**Legend**

- 1234 300 Acre Drainage Point (start of the 75 ft buffer) 1234 - ID Number (location info)
- 56 25 Square Mile Drainage Point (start of the 250 ft buffer) 56 ID Number (location info)
- Emergent or Marine Wetland
- Non-forested Wetlands Greater Than 10 acres (Lacustrine, Palustrine)

**Legend**

- LO Last Name \_\_\_\_\_
- LO First Name \_\_\_\_\_
- Prepared By \_\_\_\_\_
- FONS # \_\_\_\_\_
- Date \_\_\_\_\_
- FON Town \_\_\_\_\_
- Statewide Standards Rules do not apply (Town/MDEP Standards apply)
- Statewide Standards Rules Apply
- LUPC - Unorganized or Deorganized Town
- Outside Maine

Data Source: Maine Office of GIS  
G.T.Miller E:\aws\SW S page size december 2021.mxd