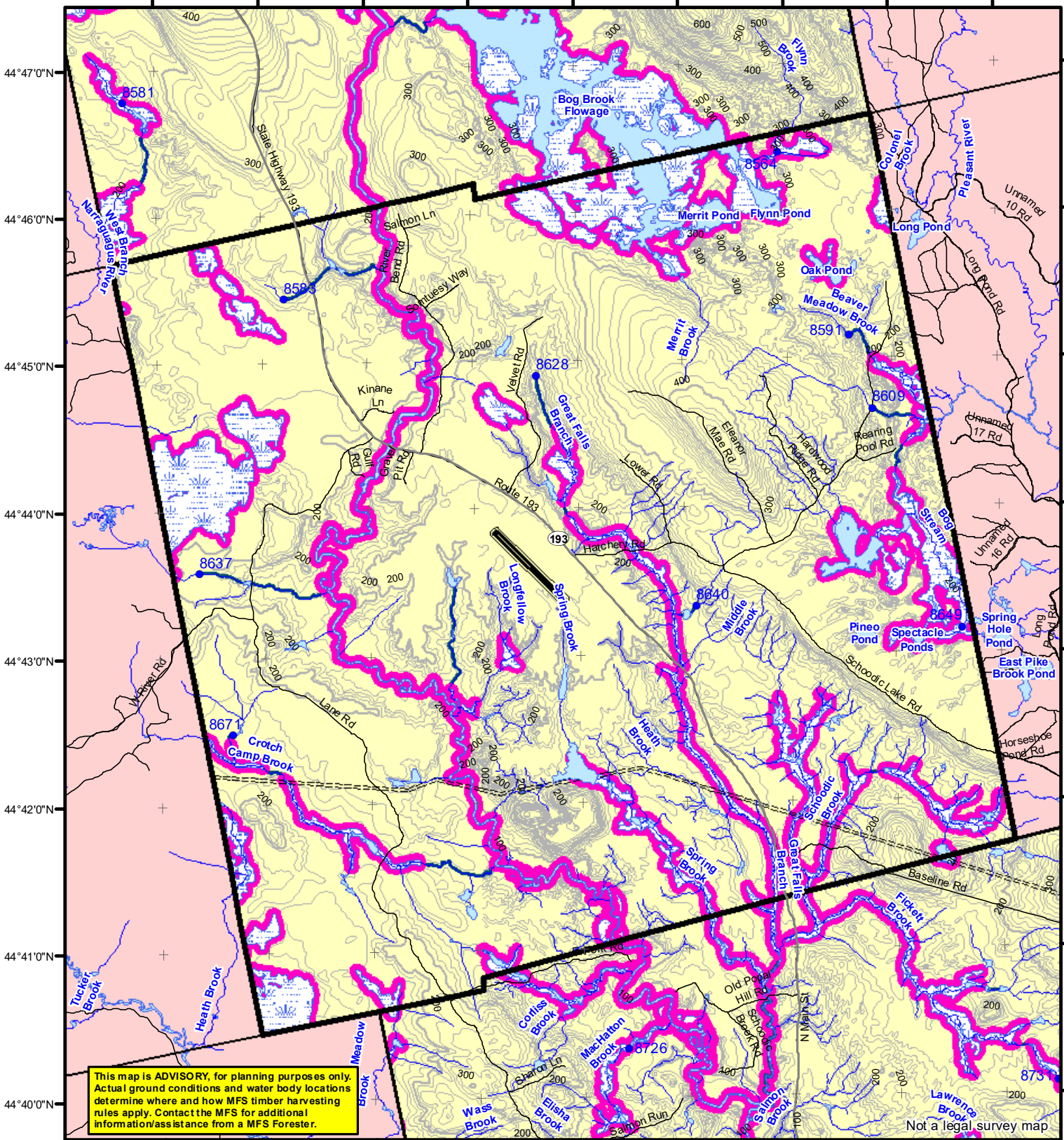


68°30'W 68°20'W 68°10'W 68°00'W 67°59'0"W 67°58'0"W 67°57'0"W 67°56'0"W 67°55'0"W



This map is ADVISORY, for planning purposes only. Actual ground conditions and water body locations determine where and how MFS timber harvesting rules apply. Contact the MFS for additional information/assistance from a MFS Forester.

Statewide Standards

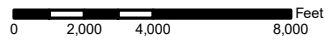
- Buffers**
 - 250 Foot Buffer Zones
 - Great Ponds
 - Non-forested Wetlands greater than 10 acres
 - Rivers below the 25 square mile drainage point
 - Coastal Wetlands
 - Tidal Waters
 - Essential Wildlife Habitat (Least Tern, Roseate Tern, Piping Plover)
 - 75 Foot Buffer Zones - Streams between the 300 acre drainage point and the 25 square mile drainage point
 - Shoreline Integrity - Streams draining less than 300 acres, ponds and Non-forested Wetlands greater than 0.1 acres and less than 10 acres
 - Shoreline Integrity also applies to UNMAPPED streams and wetlands.
- Habitat**
 - Essential Wildlife Habitat (Least Tern, Roseate Tern, Piping Plover)
- Drainage Points**
 - 1234 300 Acre Drainage Point (start of the 75 ft buffer) 1234 - ID Number (location info)
 - 56 25 Square Mile Drainage Point (start of the 250 ft buffer) 56 ID Number (location info)
- Wetlands**
 - Emergent or Marine Wetland
 - Non-forested Wetlands Greater Than 10 acres (Lacustrine, Palustrine)

Forest Operation Notification & Shoreland Area* Map

Deblois

Adoption Date 8/18/2010

December 2021



*See MFS Rule - Chapter 2.1 for additional information.

Department of Agriculture, Conservation and Forestry
Maine Forest Service
Forest Policy & Management

- Roads**
 - Interstate
 - US Highway
 - State Highway
 - 24k Roads
- Hydrology**
 - Pond or Lake
 - River
 - Estuary
- Streams**

Contours

- 20 ft
- 100 ft

Utilities

- Electric
- Pipeline
- Railroad
- Airfield

Data Source: Maine Office of GIS

LO Last Name _____
 LO First Name _____
 Prepared By _____
 FONS # _____
 Date _____

- FON Town
- Statewide Standards Rules do not apply (Town/MDEP Standards apply)
- Statewide Standards Rules Apply
- LUPC - Unorganized or Deorganized Town
- Outside Maine