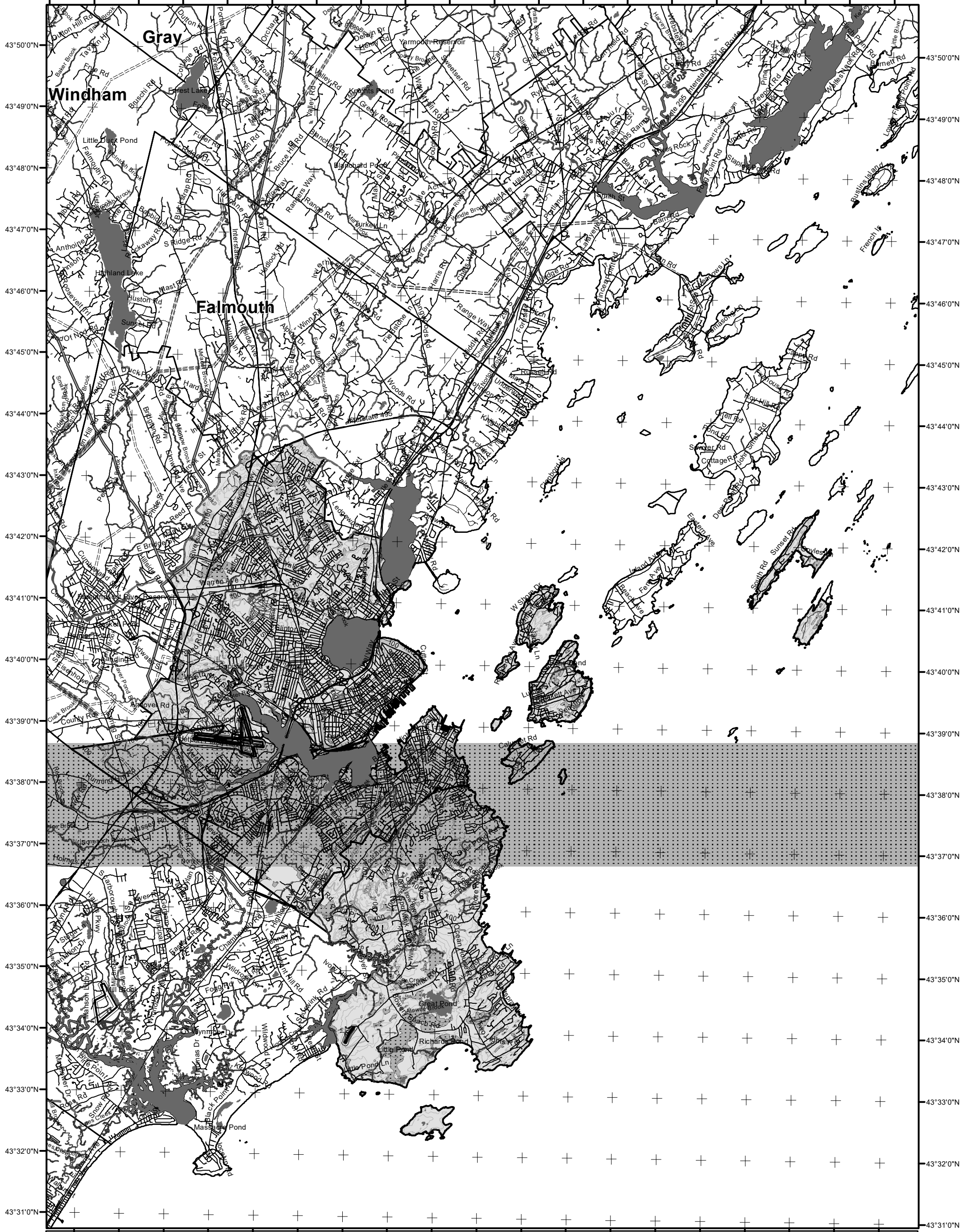


70°23'0"W 70°22'0"W 70°21'0"W 70°20'0"W 70°19'0"W 70°18'0"W 70°17'0"W 70°16'0"W 70°15'0"W 70°14'0"W 70°13'0"W 70°12'0"W 70°11'0"W 70°10'0"W 70°9'0"W 70°8'0"W 70°7'0"W 70°6'0"W 70°5'0"W 70°4'0"W



LO Last Name \_\_\_\_\_  
 LO First Name \_\_\_\_\_  
 Prepared By \_\_\_\_\_  
 FONS # \_\_\_\_\_  
 Date \_\_\_\_\_

### Forest Operation Notification & Harvest Location Map

# Portland

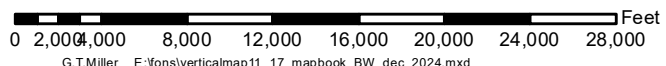
For shoreland zoning, check with Town Office/DEP

<b>Roads</b> — E911 Roads — 24k Roads  <b>Contours</b> — 20 feet — 100 feet  <b>Utilities</b> ===== Electric — Pipeline + Railroad — Airfield	<b>Freshwater Wetlands</b> ■ Forest/Shrub  <b>Hydrology</b> ■ Pond or Lake ■ River ■ Estuary  <b>Streams</b> — Stream/River - - - Stream/River: Intermittent — Stream/River: Perennial	<b>Town Status</b> ■ FON Town <small>Statewide Standards Rules do not apply (Town/MDEP Standards apply)</small> ■ Statewide Standards Rules Apply or LUPC - Unorganized/deorganized Town ■ Outside Maine
---	---	--

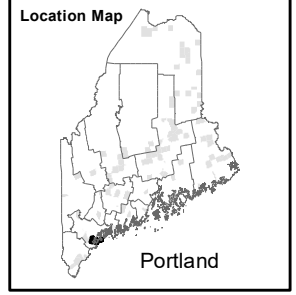
PLEASE RETURN ENTIRE MAP  
 Not a legal survey map  
 For additional information, Please contact the MFS at:  
 1-207-287-2791 or 1-800-367-0223 (in-state)  
 Email us at: forestinfo@maine.gov  
 Or visit us on the web at: www.maine-forestservice.gov

Department of Agriculture, Conservation and Forestry  
 Maine Forest Service  
 Forest Policy & Management

December 2024



Data Source: Maine Office of GIS, US Fish & Wildlife



G.T.Miller E:\fons\verticalmap11\_17\_mapbook\_BW\_dec\_2024.mxd