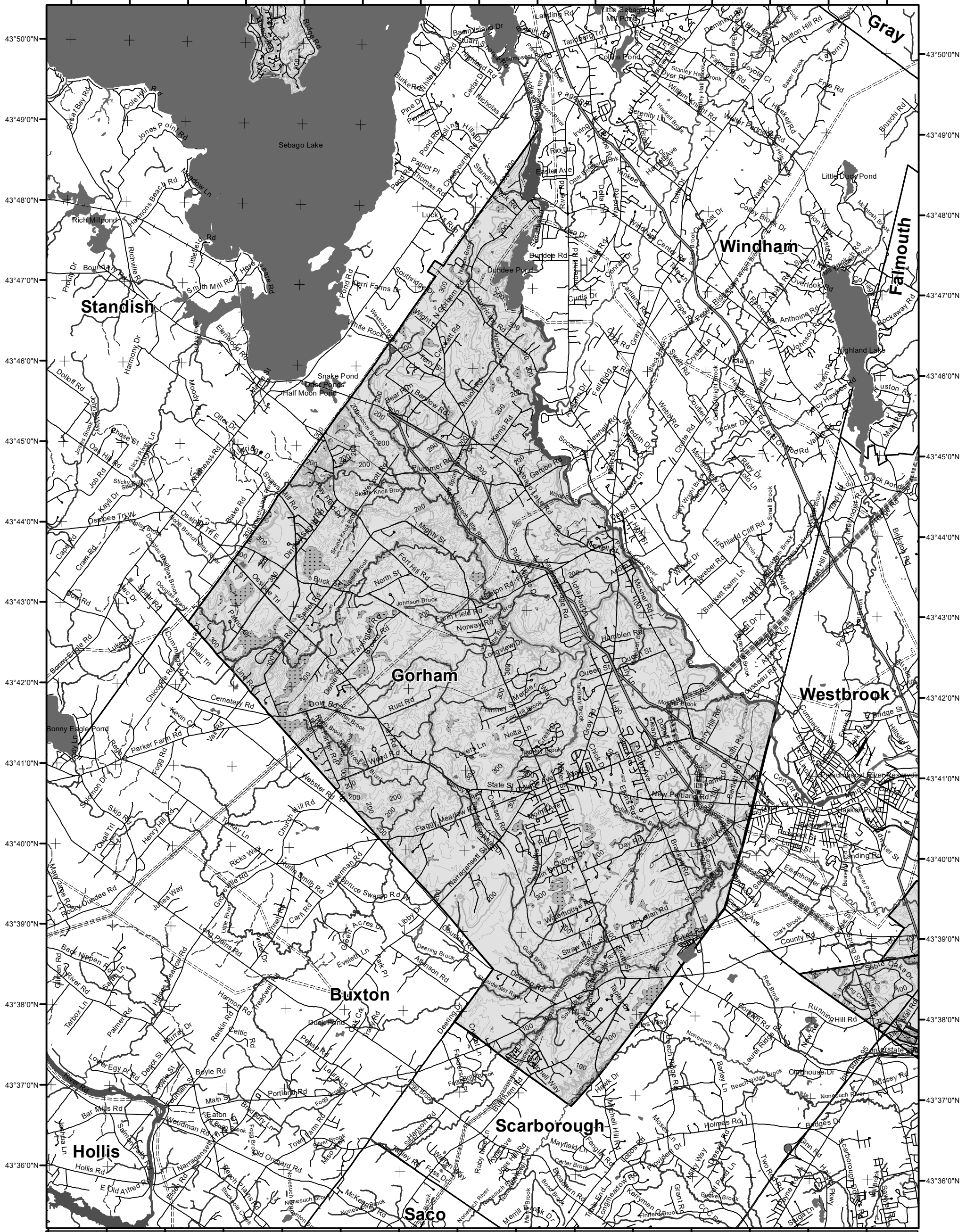


70°35'0"W 70°34'0"W 70°33'0"W 70°32'0"W 70°31'0"W 70°30'0"W 70°29'0"W 70°28'0"W 70°27'0"W 70°26'0"W 70°25'0"W 70°24'0"W 70°23'0"W 70°22'0"W 70°21'0"W



LO Last Name _____

LO First Name _____

Prepared By _____

FONS # _____

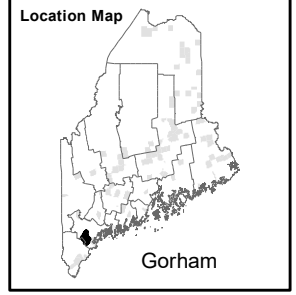
Date _____

Forest Operation Notification & Harvest Location Map

Gorham

For shoreland zoning, check with Town Office/DEP

Roads	Freshwater Wetlands	Town Status
— E911 Roads	■ Forest/Shrub	□ FON Town
— 24k Roads		□ Statewide Standards Rules do not apply (Town/MDP Standards apply)
Contours	Hydrology	□ Statewide Standards Rules Apply or LUPC - Unorganized/deorganized Town
— 20 feet	■ Pond or Lake	■ Outside Maine
— 100 feet	■ River	
Utilities	■ Estuary	
==== Electric	Streams	
— Pipeline	— Stream/River	
— Railroad	— Stream/River: Intermittent	
— Airfield	— Stream/River: Perennial	



PLEASE RETURN ENTIRE MAP

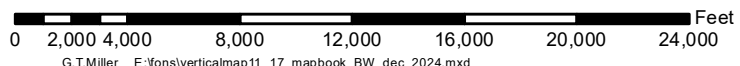
Not a legal survey map
For additional information, Please contact the MFS at:
1-207-287-2791 or
1-800-367-0223 (in-state)

Email us at: forestinfo@maine.gov

Or visit us on the web at:
www.maine-forestservice.gov

Department of Agriculture, Conservation and Forestry
Maine Forest Service
Forest Policy & Management

December 2024



Data Source: Maine Office of GIS US Fish & Wildlife