

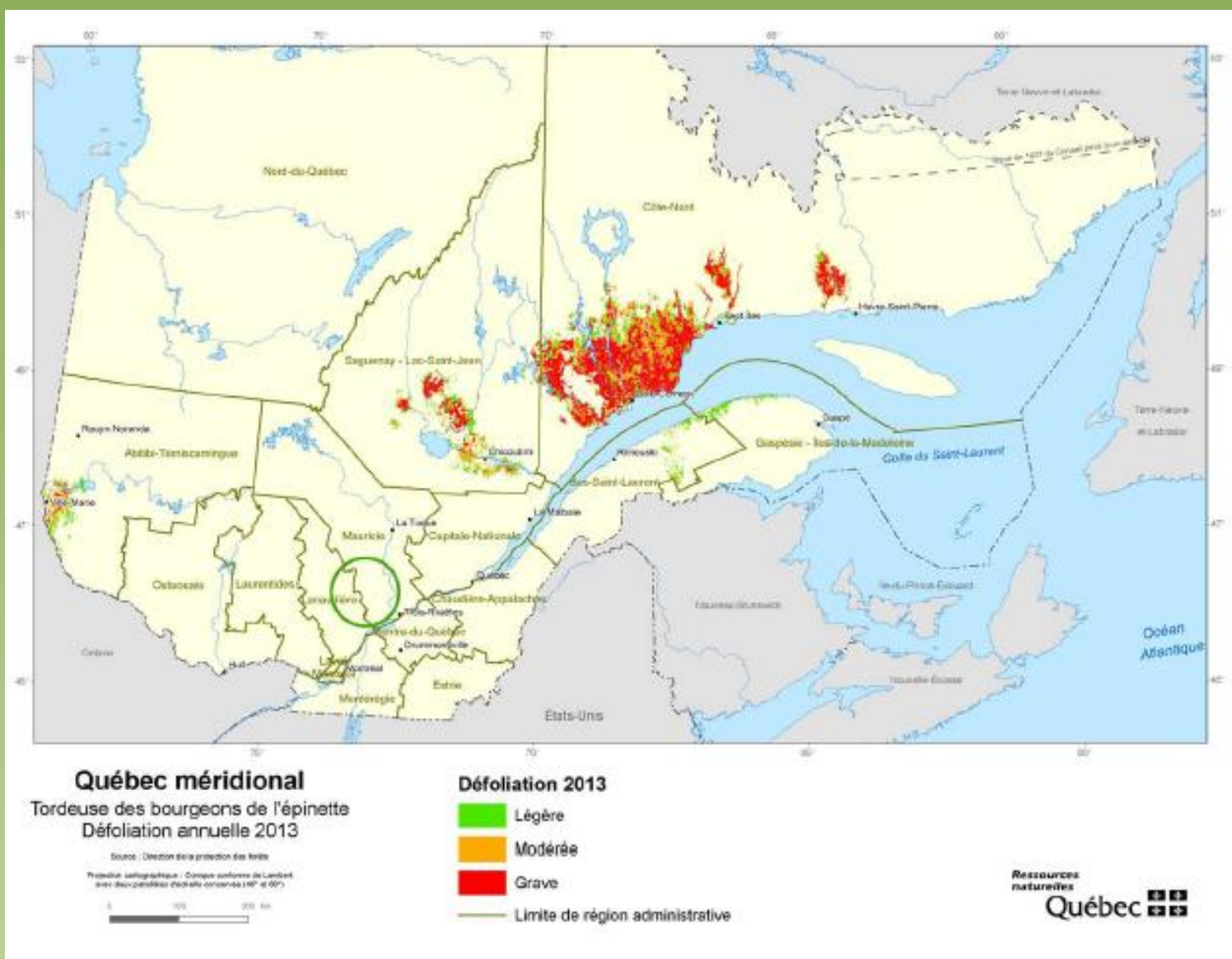
# Return of Spruce Budworm

## What is Spruce Budworm?

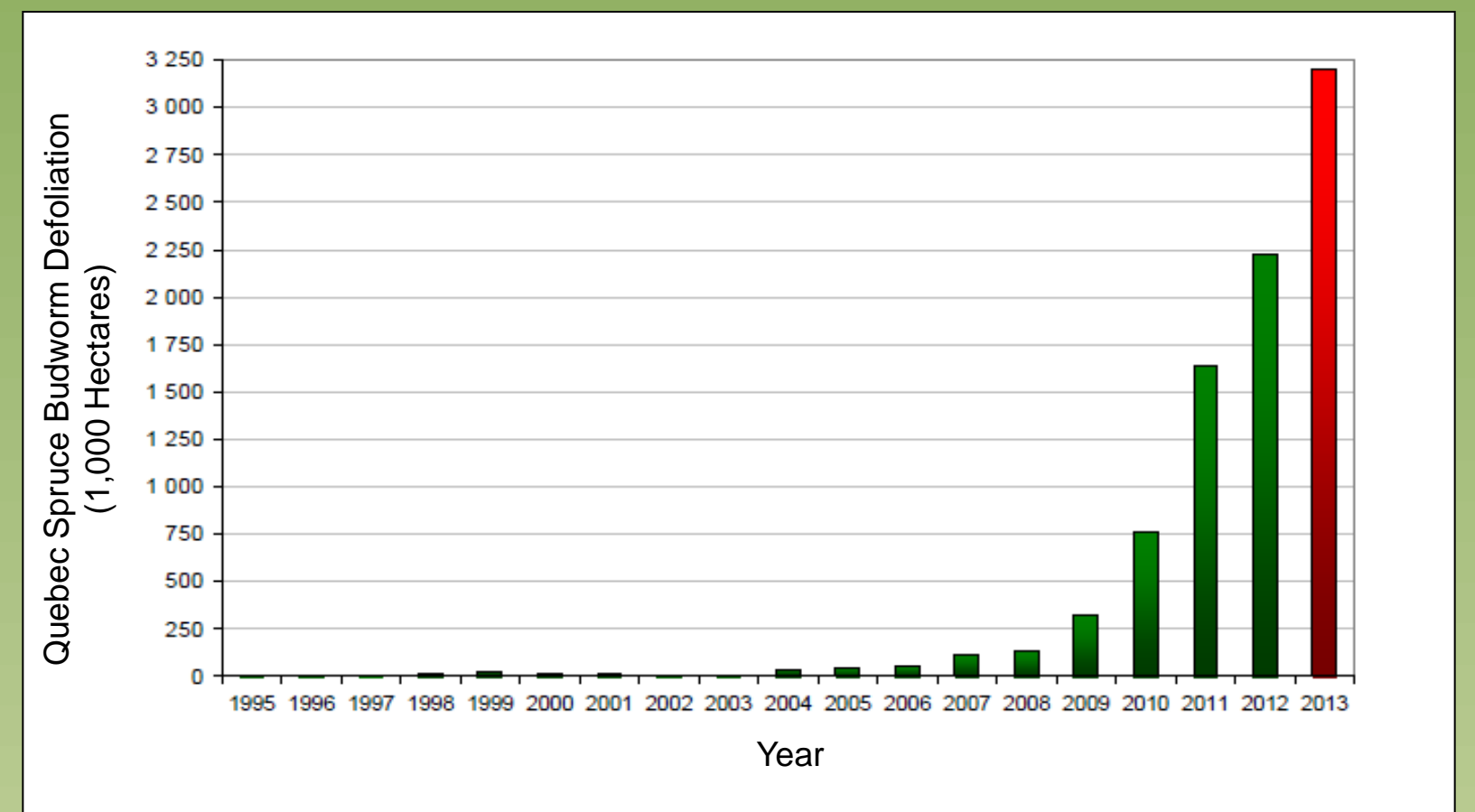
- Native insect
- Eats needles of fir and spruce trees
- Population either very high or very low
- 40 year cycle in sync with maturing of fir & spruce
- Kills trees by eating all the needles year after year



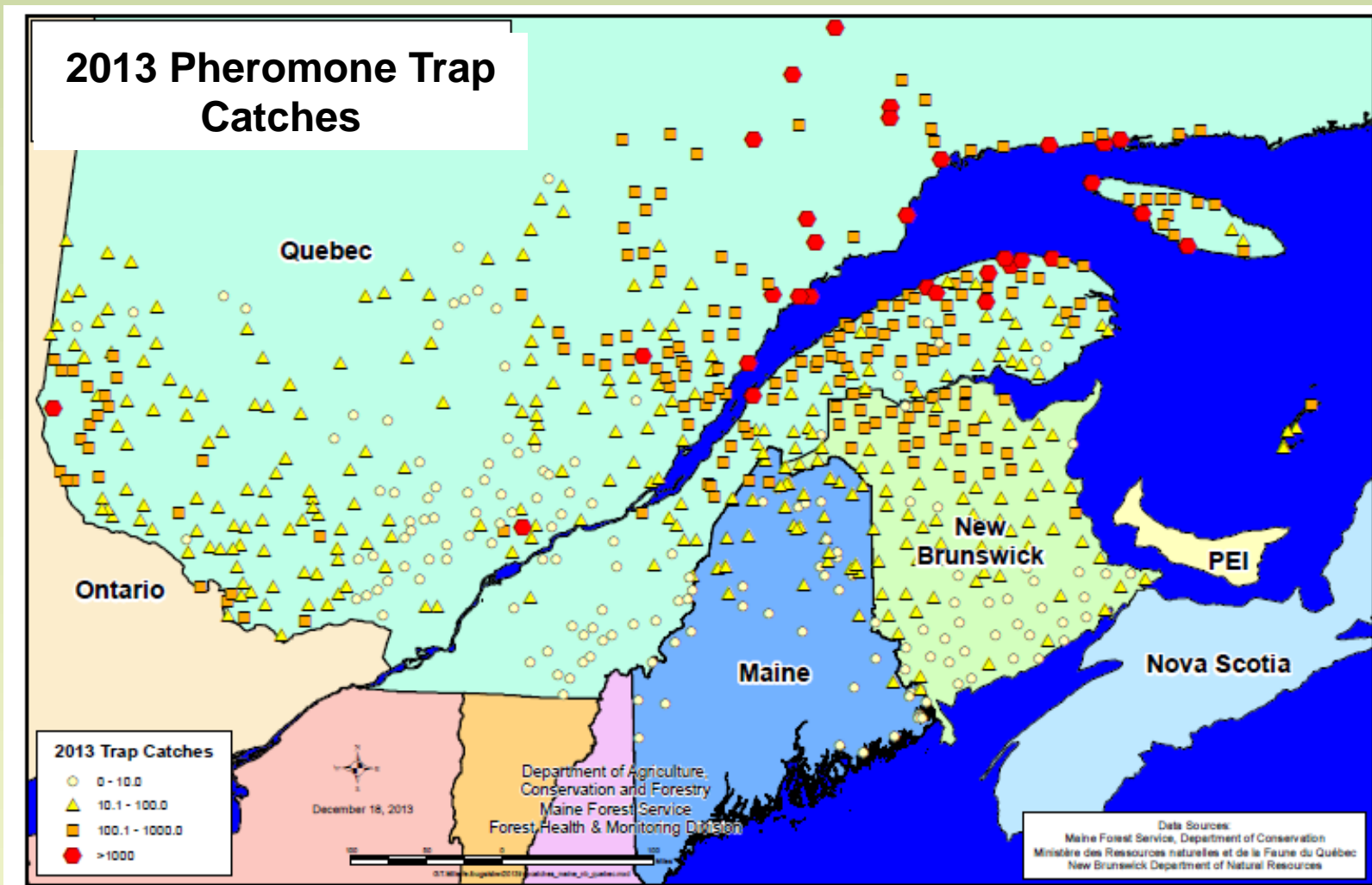
Spruce Budworm Damaged Trees  
Allagash 1975 MFS photo



Quebec 2013 Spruce Budworm Defoliation  
8 million acres total defoliated  
6.5 million acres moderate- severe defoliation  
Protected about 5% of defoliated trees



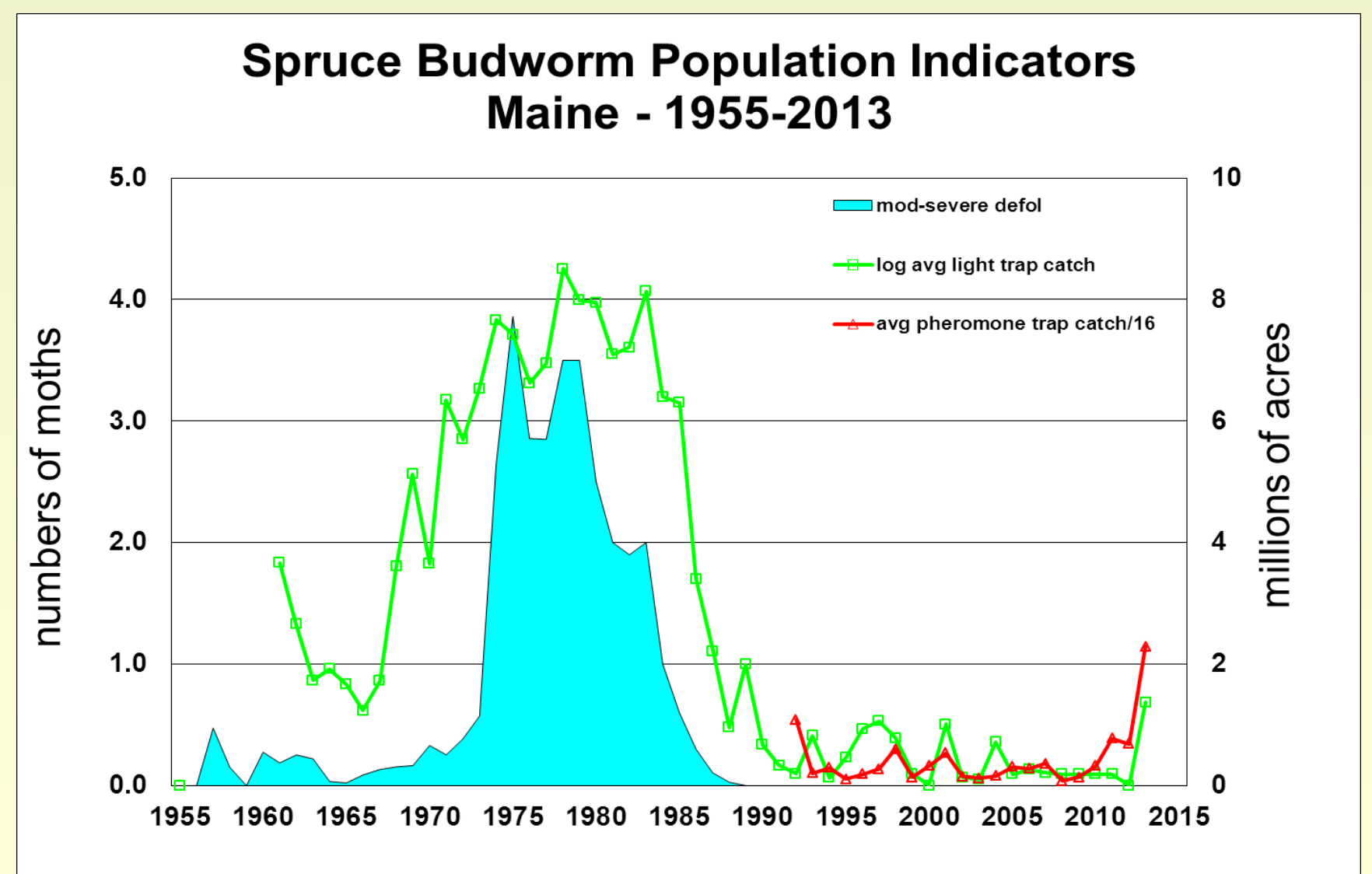
Recent Spruce Budworm Defoliation in Quebec



Spruce Budworm Defoliation  
T4 R14 WELS along the West Branch of the Penobscot River  
1974 MFS photo

## Spruce Budworm Prognosis:

- Noticeable defoliation in Maine in 2-4 years
- Will kill trees and reduce growth
- Perhaps not as severe as last outbreak
  - Trees are younger
  - Not as contiguous across the landscape
  - Infestations may be shifting north



For more information contact the **Maine Forest Service Insect & Disease Laboratory**  
168 SHS Augusta, ME • forestinfo@maine.gov • (207) 287-2431 • 1-800-367-0223 (in Maine)