



COMMUNITY
RESILIENCE  PARTNERSHIP

Communities Leading on Climate

June 17, 2022



Maine's Climate Action Strategies



A. Embrace the Future of Transportation in Maine



D. Grow Maine's Clean Energy Economy and Good Jobs



G. Invest in Climate-Ready Infrastructure



B. Modernize Maine's Buildings



E. Protect Maine's Environment and Working Lands and Waters, Increase Carbon Sequestration



H. Engage People and Communities in Climate Impacts and Program Opportunities



C. Reduce Carbon Emissions the Energy and Industrial Sectors through Clean Energy Innovation



F. Build Healthy and Resilient Communities



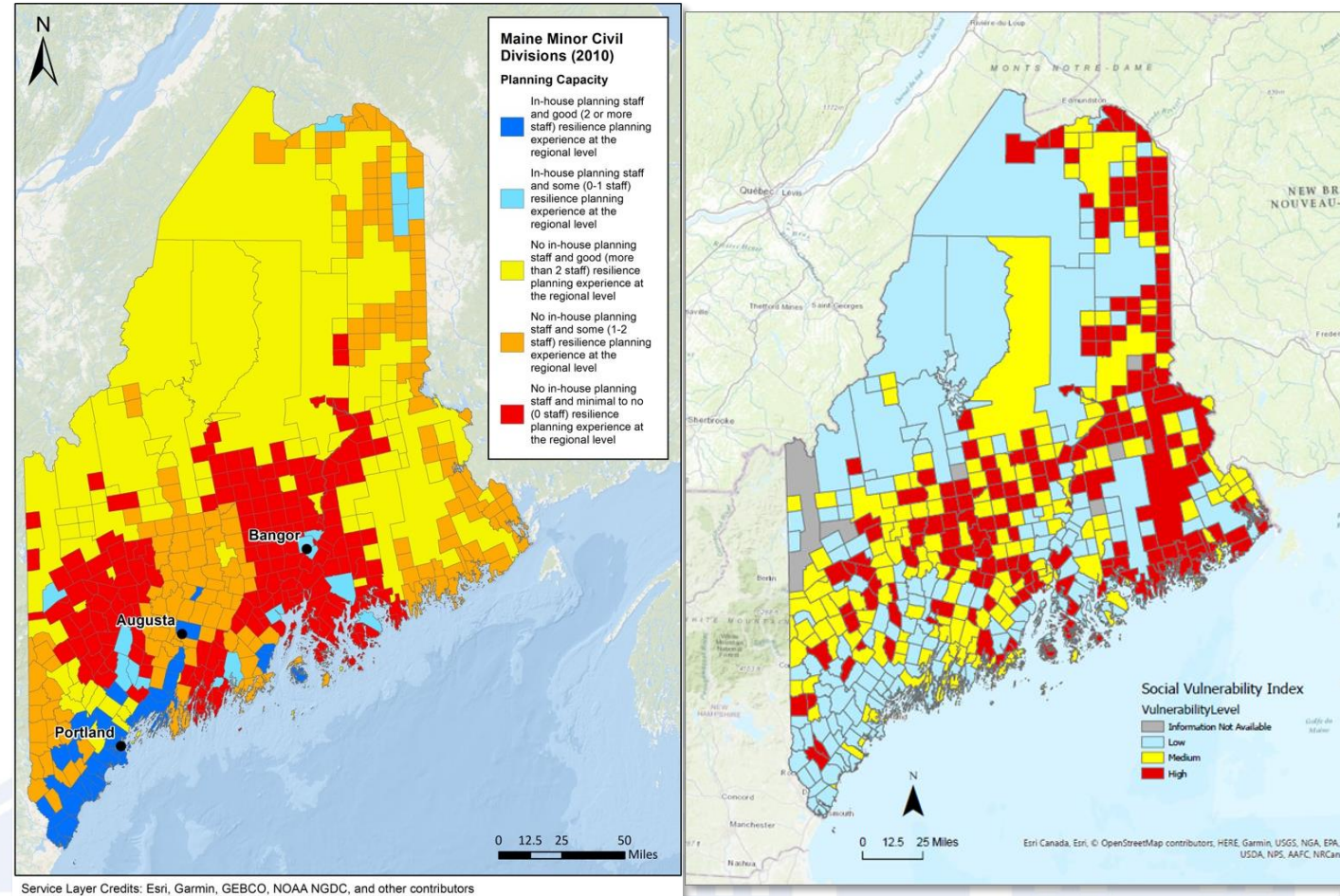
Community Resilience Partnership

www.maine.gov/future/climate/community-resilience-partnership

Purpose

Through grants and technical assistance, the Community Resilience Partnership assists communities to:

- reduce carbon emissions,
- transition to clean energy, and
- become more resilient to climate change effects.



Community Resilience Partnership

\$4.75 million in the state's biennial budget for local, tribal, and regional grants to reduce carbon emissions and prepare for climate change impacts.

- **Grants to communities** for planning and implementing climate actions aligned with Maine's climate action plan
- **Grants to service provider organizations** to help communities get started
- **Regional coordinators** to support ongoing community implementation



Enrolling in the Partnership

1. **Pass a municipal resolution or obtain a letter from a tribal chief committing to participate**
 - Model language provided
2. **Complete two self-assessments**
 - List of Community Actions
 - Community Resilience Self-evaluation
3. **Hold a community workshop and set priority action items**

Rolling enrollment – no deadlines.

Need help with the steps? Seek out a service provider.

Community Resilience Partnership
Community Resilience Partnership | Office of Policy Innovation & Future (maine.gov)

Program Contact: Brian Ambrette
 brian.ambrette@maine.gov

Community Resilience Self-Evaluation

Instructions: This tool is intended to help organize your community's approach to increasing resilience to natural hazards and climate change impacts. Answer the questions to the best of your knowledge and seek information from your colleagues in municipal and county government and organizations in your community. Provide any relevant information in the explanation field. If it is difficult to give a clear yes or no response to a question, use the explanation field to explain why. **There are no wrong answers and the responses here will not affect your community's eligibility to receive grants.** Where the response to a question is no, that may indicate an area of opportunity to address through a Community Action Grant.

Community name:

Self-Evaluation responses please include contact info:

Date:

Was this evaluation discussed at a community workshop? Include date of the workshop:

Once the questions on the form are completed, please email the responses to:

What are two things your community is doing well?

What are two areas that could be improved in the short-term?

What is important for your community to address in the long-term?

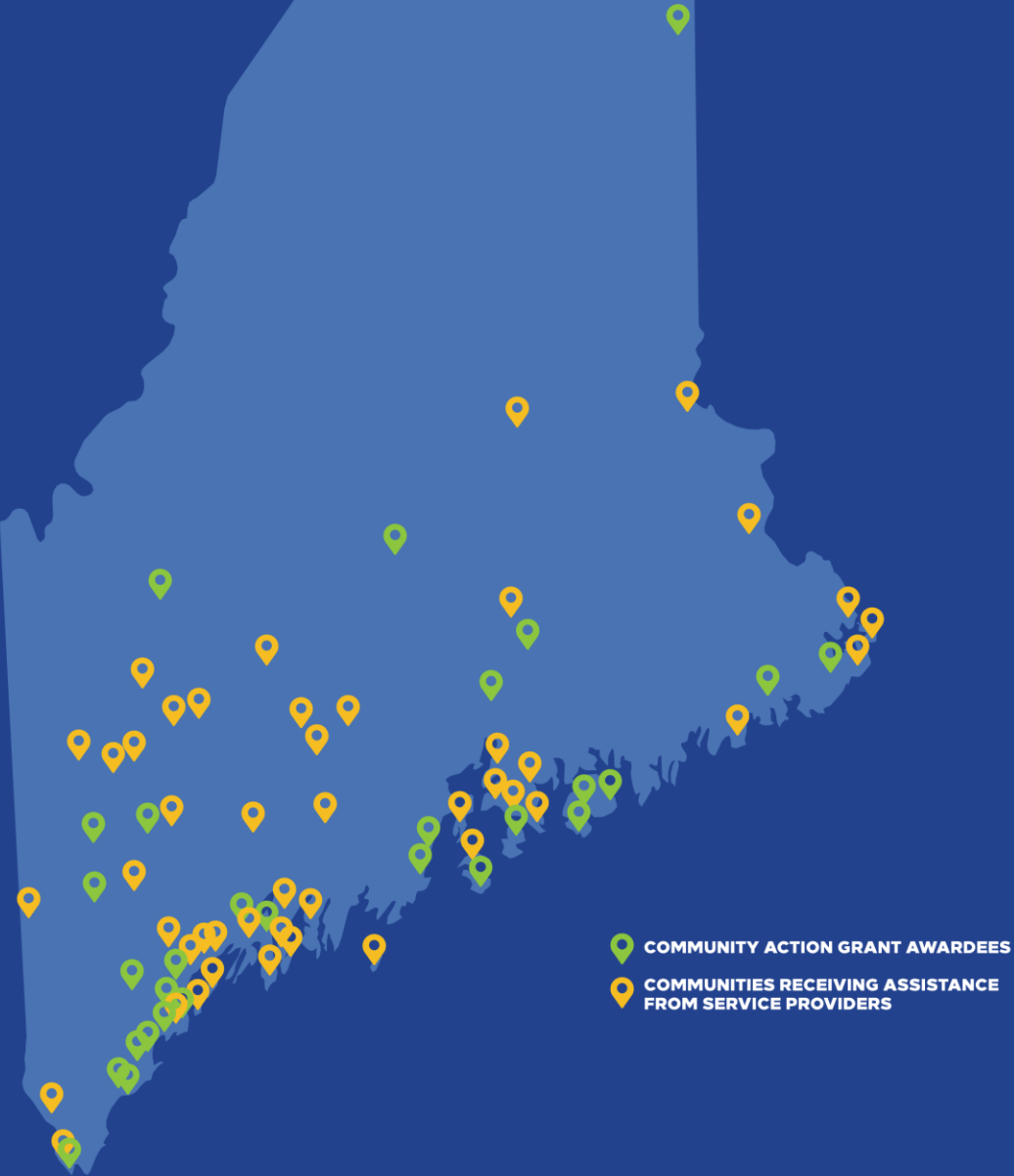
What specific 3 to 5 action priorities for your community?

Revised December 1, 2021

Program Contact: Brian Ambrette
 brian.ambrette@maine.gov
 Community Resilience Partnership | Office of Policy Innovation & Future (maine.gov)

Community Resilience Partnership
 List of Community Actions
 Revised December 1, 2021

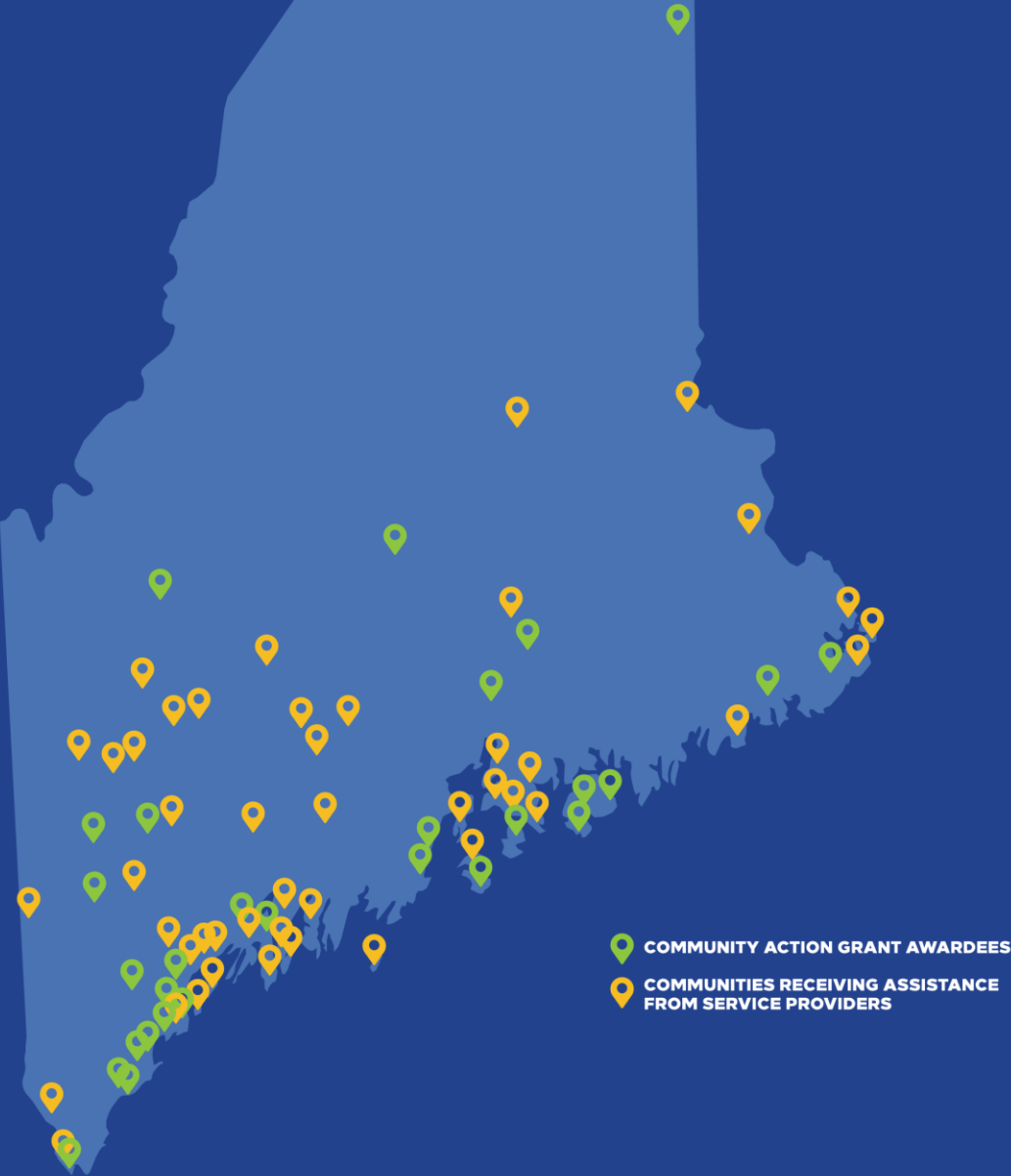
✓	Strategy Areas & Actions	Additional Resources (\$=funding source)
Strategy Area A: Embrace the Future of Transportation		
Accelerate the Transition to Electric Vehicles (EVs)		
A1	Purchase or lease electric vehicles for municipal or tribal government-owned vehicle fleets. (Grants capped at \$2,000 per light duty EV.)	Efficiency Maine: Municipal EV rebates (\$)
A2	Install EV chargers in public parking areas.	Efficiency Maine: EV supply equipment initiative (\$)
A3	Adopt ordinances to encourage EV charging infrastructure, including at multifamily dwellings, businesses, and public parking areas.	Municipal Electric Vehicle Readiness Toolkit (Southern Maine Planning and Development Commission)
A4	Adopt an anti-idling ordinance.	Example: Bar Harbor Municipal Code
Improve Mobility and Reduce Vehicle Miles Traveled (VMT)		
A5	Implement strategies that increase public transit ridership and alternative transportation modes, including bike and walking.	
A6	Implement strategies that encourage municipal/tribal employees to commute via carpools, public transit, bike/walk, or other alternatives to single-occupancy vehicles.	
A7	Adopt a telework policy for municipal/tribal government staff positions that can work remotely some days per week.	
A8	Adopt land use and development policies in plans and codes that reduce the need for driving (e.g. locating schools, workplaces, and shopping near where people live; encouraging density of development near housing and transportation).	
A9	Adopt a Complete Streets policy which addresses safety, bike/pedestrian uses, and transit.	Maine DOT Complete Streets
A10	Adopt a broadband plan that reduces the need to drive by increasing access to high speed internet for underserved residents to support telecommuting, access to remote education and telehealth.	Connect Maine planning and infrastructure grants (\$)



Spring 2022 grants

75 communities receiving support this round:

- 24 Community Action Grants to **29 communities**
- 12 Service Provider Grants to assist **46 communities**
- 4 two-year Regional Coordinator contracts



Community Action Grants

Emissions Reduction	\$507,321
Resilience & Adaptation	\$736,590

Top Activities
Vulnerability assessments (F1, G1)
Education & Outreach (H1, H2, H4)
Installing electric vehicle chargers (A2)
Emissions indicators and baselines (C1, C2)
Alternate transportation, transit, bike, walking (A5)
Watershed planning and natural resource inventories (E3, E4)

Examples

- **EV chargers** - Carrabassett Valley, Bangor, Bar Harbor, Mount Desert, Tremont
- **US Route 1 flood resiliency** - Scarborough, Machias
- **LED streetlight upgrades** - Topsham
- **Solar energy generation** - Limestone/Maine School of Science & Mathematics
- **Public health/extreme temps** - Dover-Foxcroft, Waterford
- **Energy baseline/GHG inventory** - Orono, Windham
- **Vulnerability assessment** - Bangor, Bath, Norway, Saco
- **Regional Cooperation**
 - 1) Bar Harbor, Mount Desert, Tremont
 - 2) Biddeford, Kennebunk, Kennebunkport, Kittery



Additional Funding for Resilient Communities & Climate-Ready Infrastructure

- \$50M in wastewater and drinking water programs through Maine Jobs & Recovery Plan
- Significant drinking and wastewater program funding anticipated through bi-partisan Infrastructure Investment & Jobs Act (IIJA)
- Additional culvert, resilience, wildlife, emergency management program funding through a variety of federal agencies through IIJA
- State funding for DACF positions to support municipal and regional planning



Next grant round opens early summer 2022

Application deadlines:

Service Provider Grants – August 15
Community Action Grants – September 20

More information at:

www.maine.gov/future/climate/community-resilience-partnership

Brian Ambrette

Governor's Office of Policy Innovation & the Future

brian.ambrette@maine.gov



Regional Coordinators

Region 1 York, Cumberland, Sagadahoc, Lincoln, Knox and southern Oxford counties

Region 1 Coordination Collaborative (R1CC)
Gabe McPhail

Region 2 Waldo, Hancock, and Washington counties

Sunrise County Economic Council
Jennifer Peters

Region 3 Androscoggin, Oxford, Kennebec, Franklin, and Somerset counties

Androscoggin Valley Council of Governments
Yvette Munier

Region 4 Piscataquis, Aroostook, and Penobscot counties

Eastern Maine Development Corporation
Lee Umphrey

