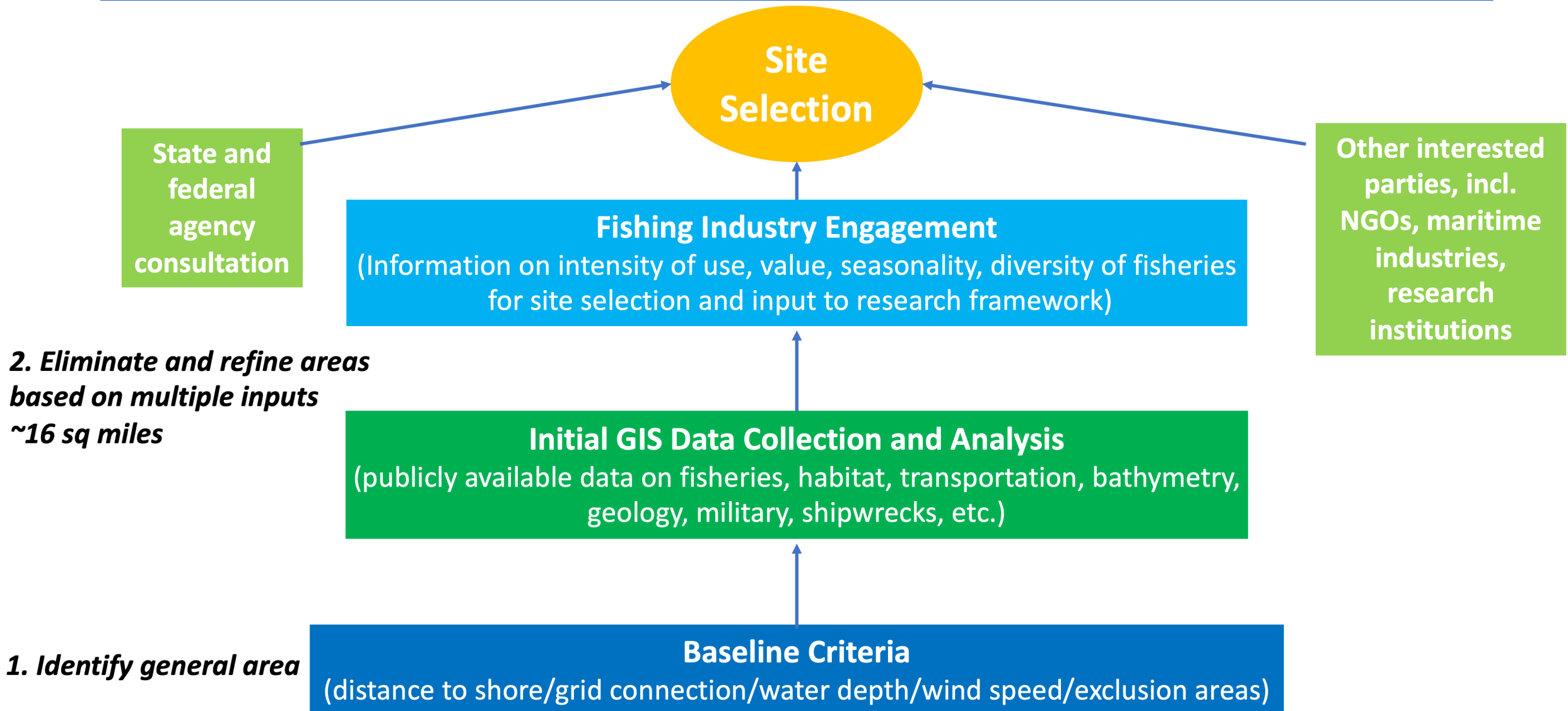




Siting Criteria

Site Selection Process



Initial Siting Criteria

20-40 statute miles offshore

150 feet of water or deeper

Southern half of ME interconnect

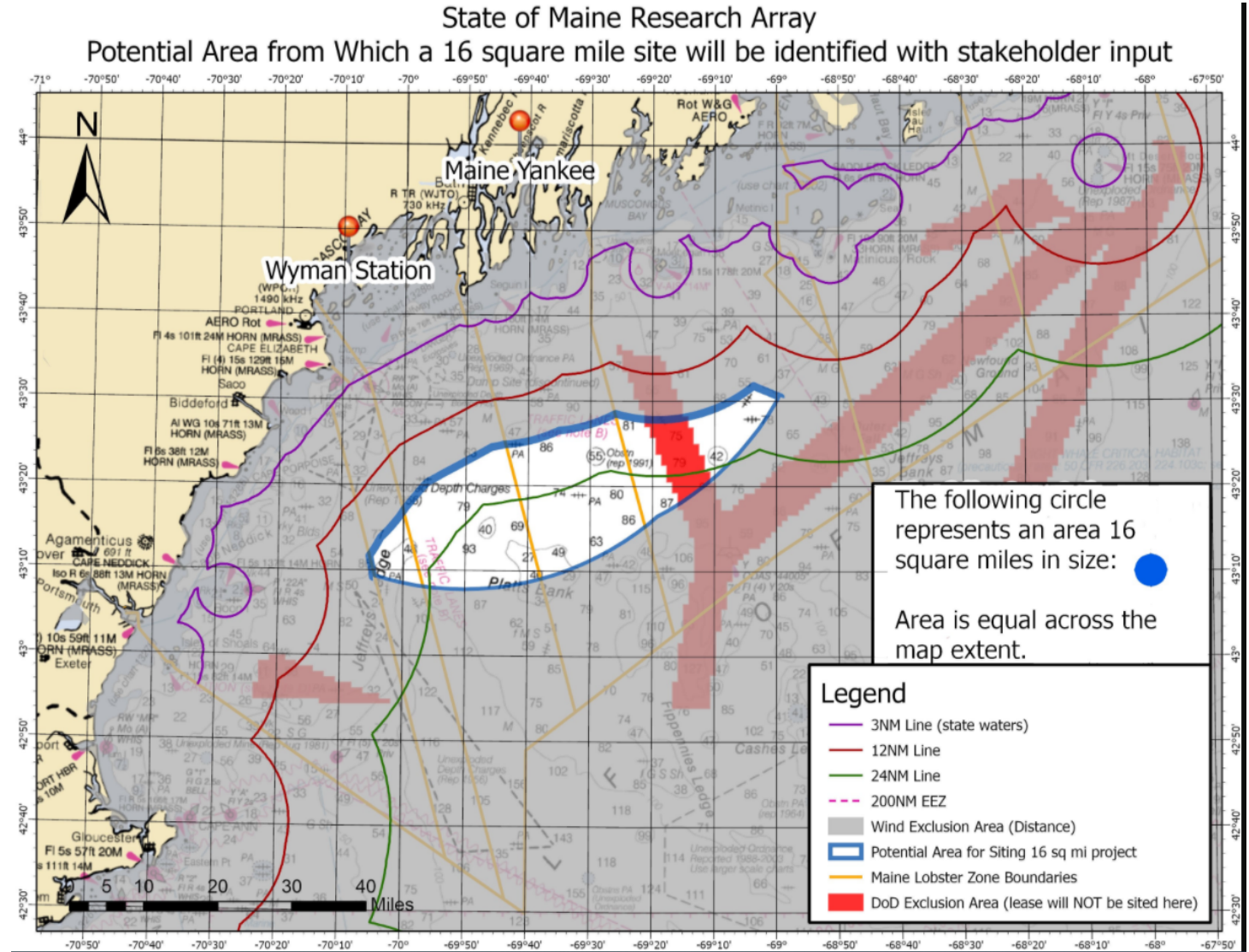
Bottom type gravel and/or mud

Minimal conflicts with known
fishing grounds

Avoid highly trafficked areas

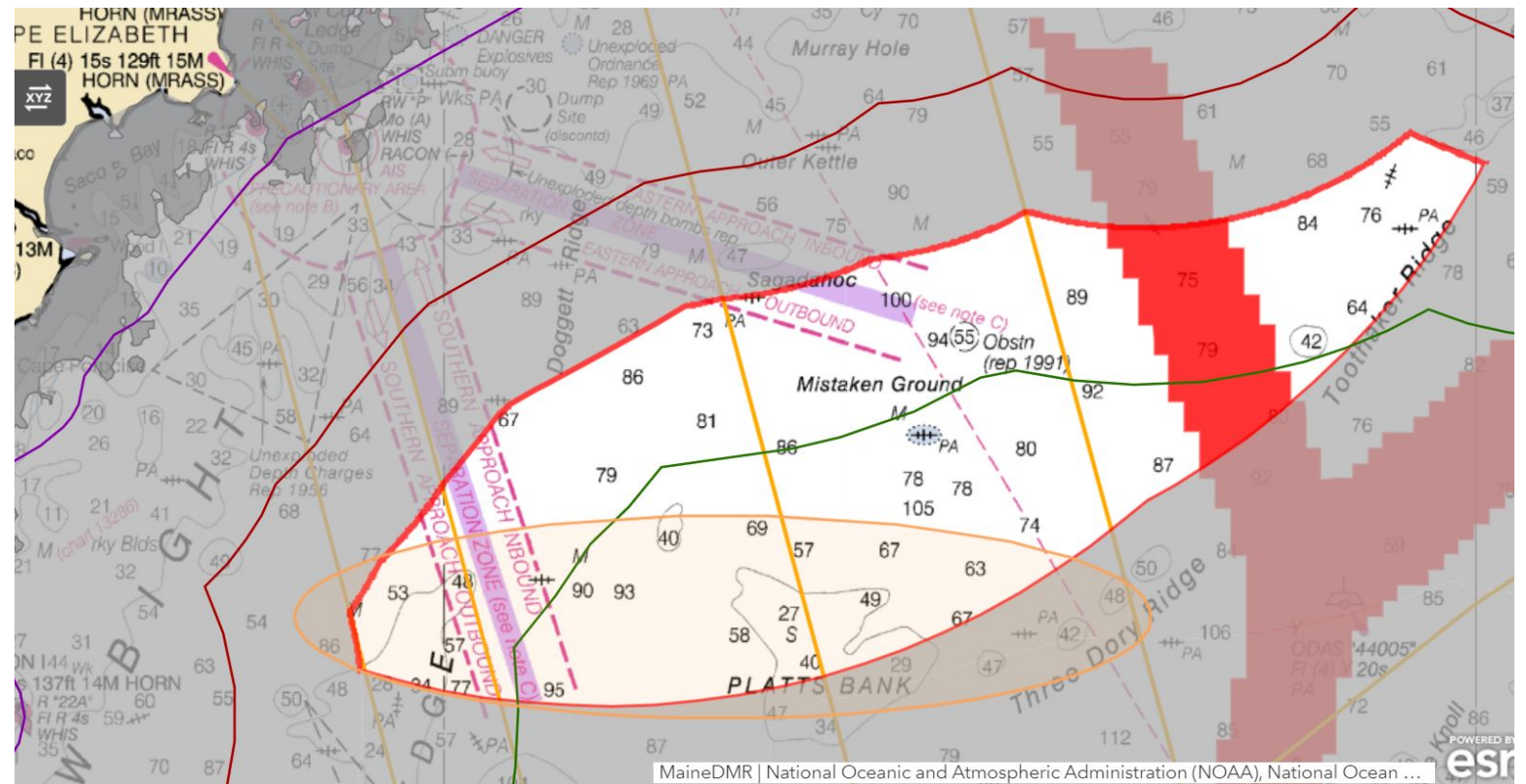
Limit visibility from shore

Research Array General Area of Interest



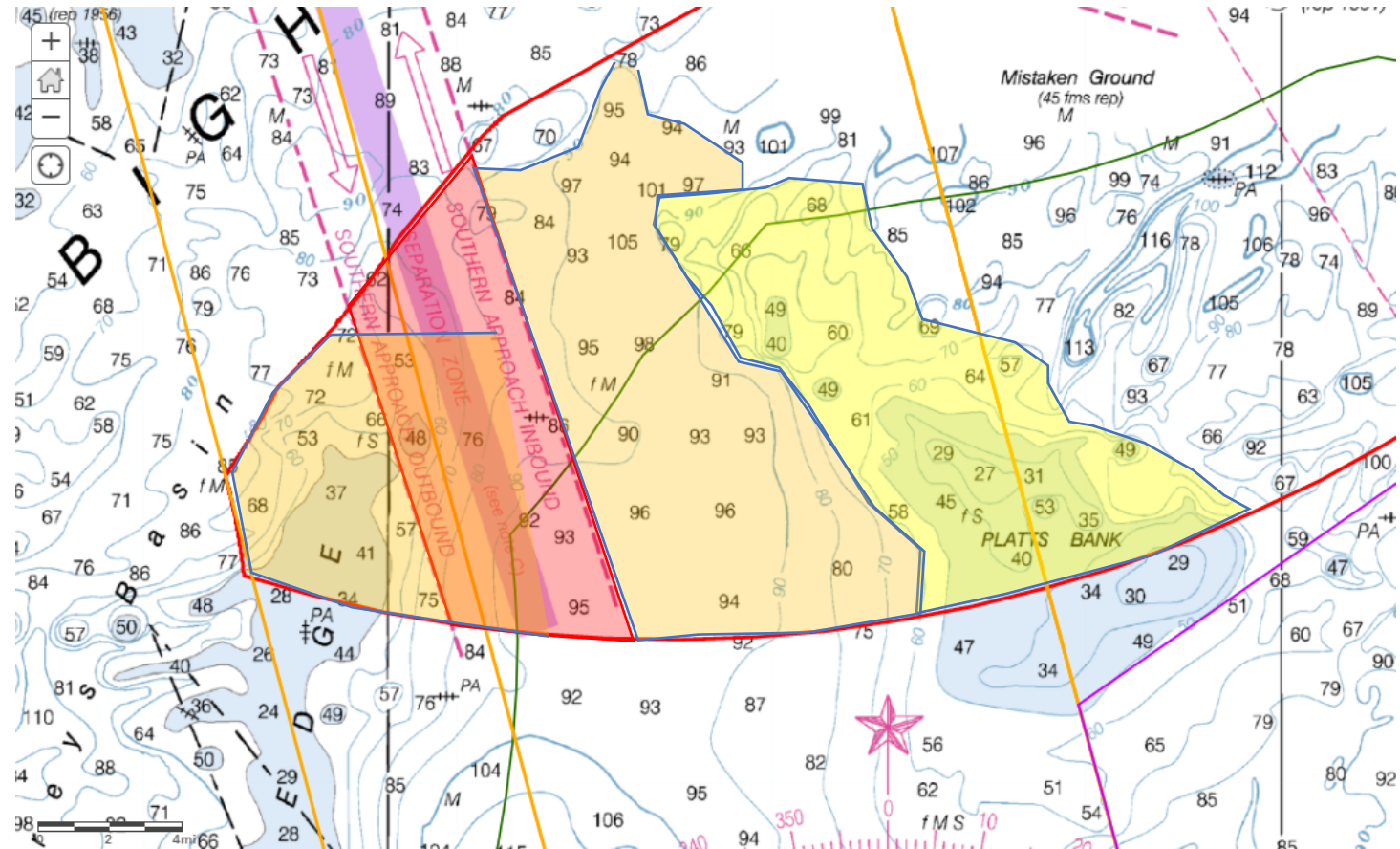
Sample Initial Feedback

- DOD Wind Exclusion Area
- Portland Shipping Lanes
- Northern portions of Platts Bank and west to WGOM Closed Area



Initial Feedback

- Portland Shipping Lanes
- Platts Bank
- Groundfish Trawl
- WGOM Closed Area



Further Input Needed

- **Areas of unique importance or concern for marine birds, wildlife or mammals**
- **Essential fish habitat**
- **Paleocultural resources**
- **Navigational corridors**
- **Substrate and bathymetry**
- **Others?**

Discussion and Questions

Initial Siting Criteria

- 20-40 miles offshore
- 150 feet of water or deeper
- Southern half of ME interconnect
- Bottom type gravel and/or mud
- Minimal conflicts with known fishing grounds
- Avoid highly trafficked areas
- Limit visibility from shore

Discussion and Questions

- **What are ways to improve and refine criteria?**
- **What additional criteria would you suggest?**
- **What are your outstanding questions?**