

Initial Siting Criteria

20-40 statute miles offshore

150 feet of water or deeper

Southern half of ME interconnect

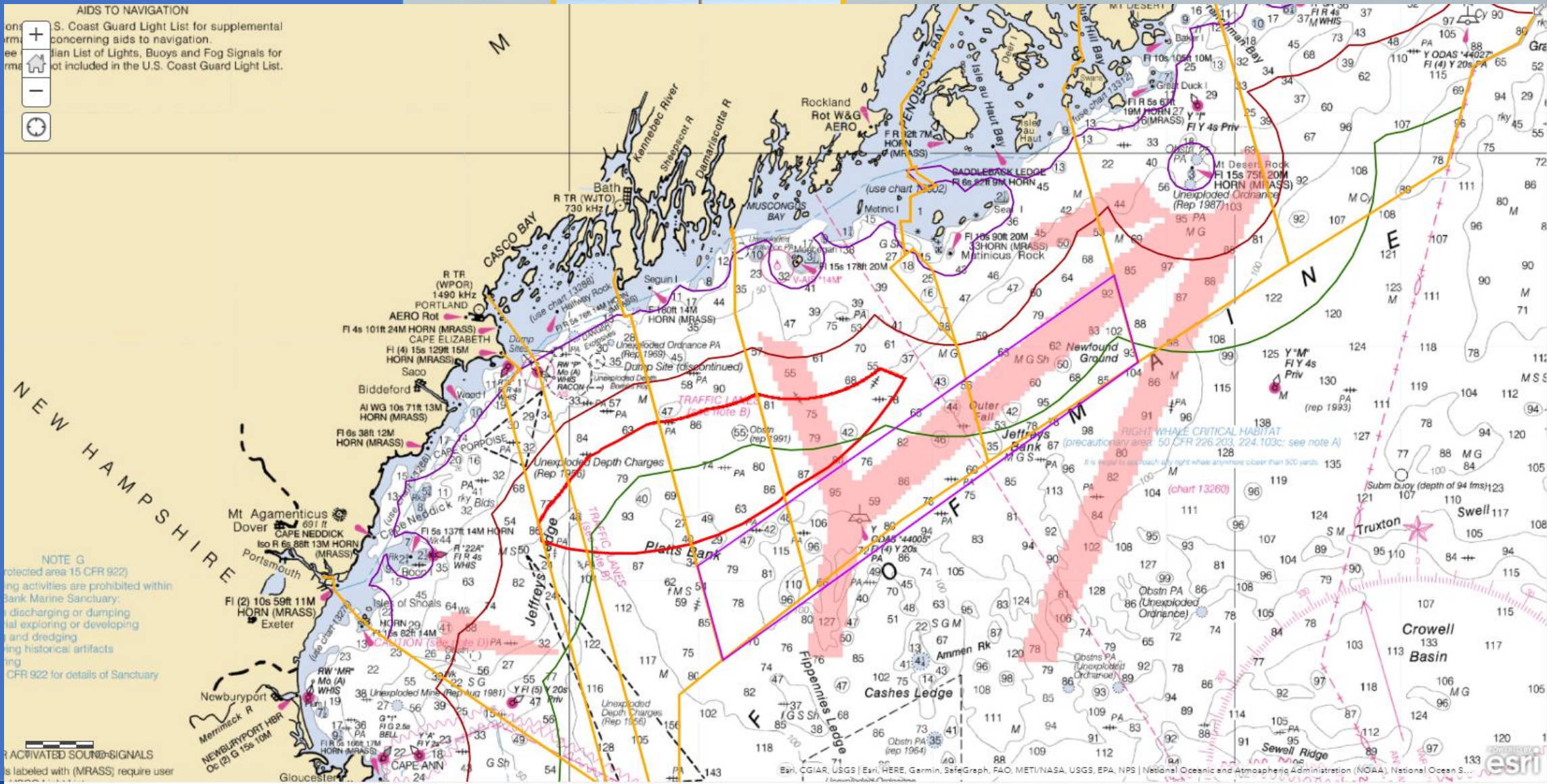
Bottom type gravel and/or mud

Minimal conflicts with known
fishing grounds

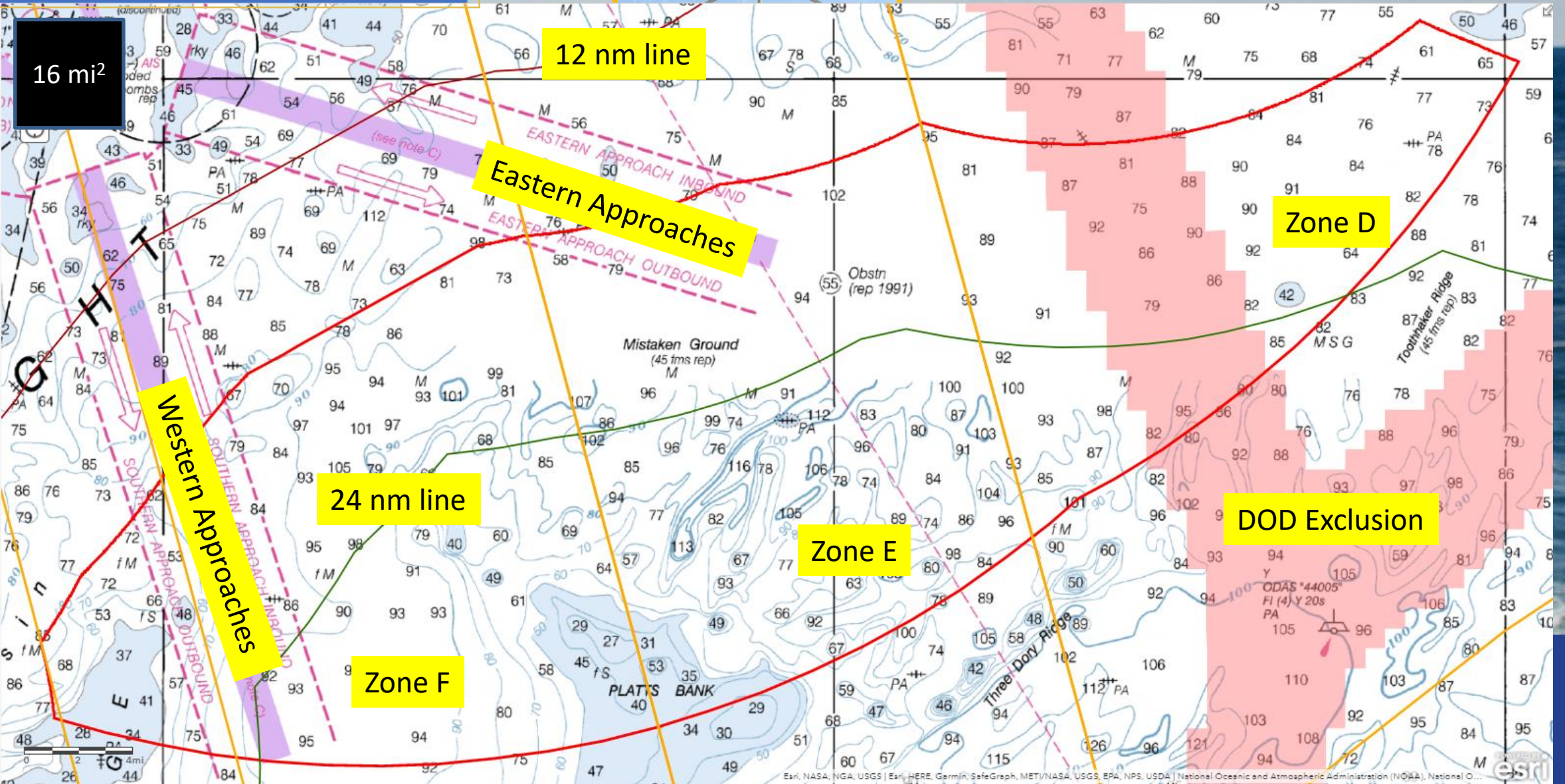
Avoid highly trafficked areas

Limit visibility from shore

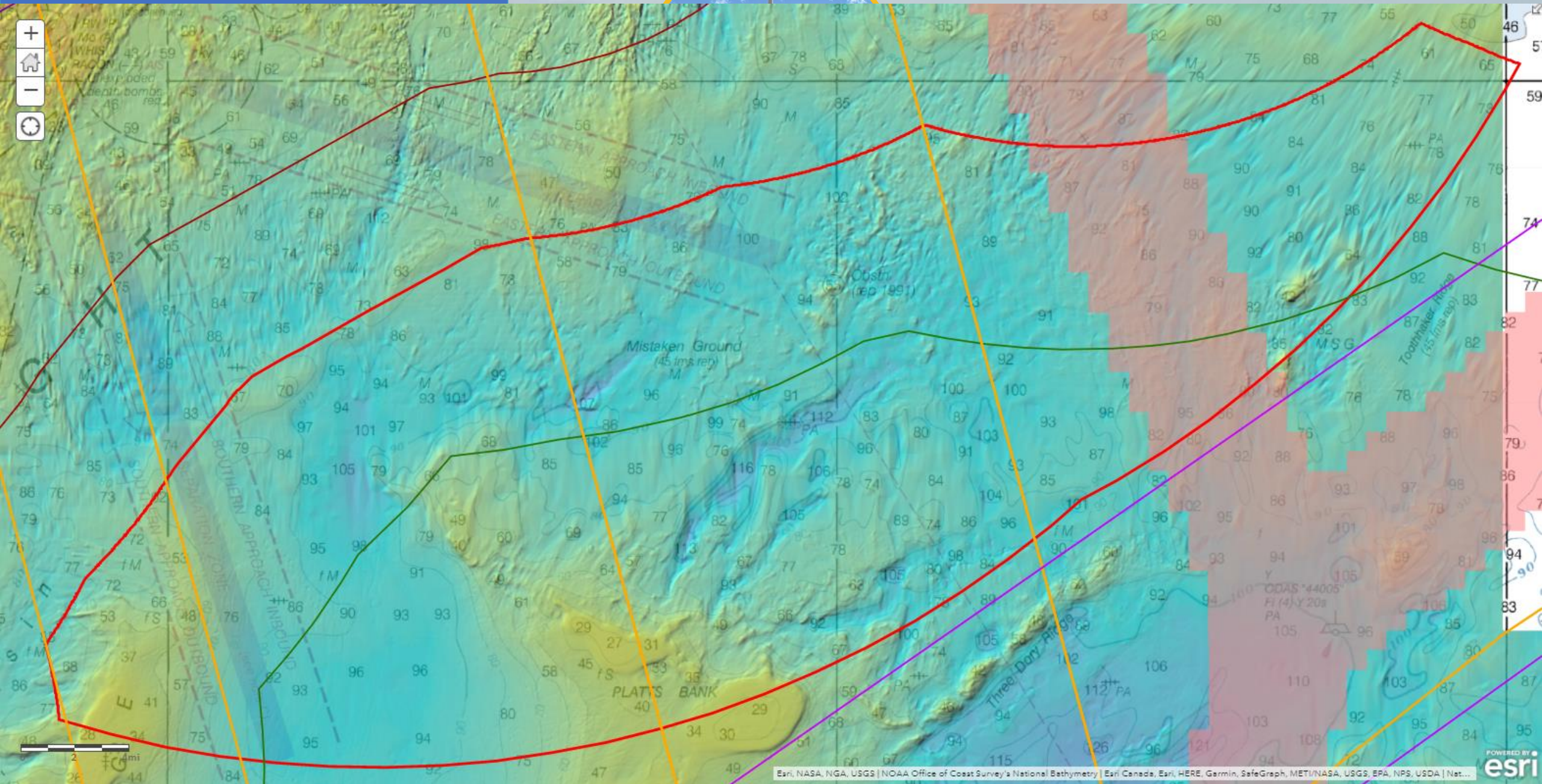
General Orientation



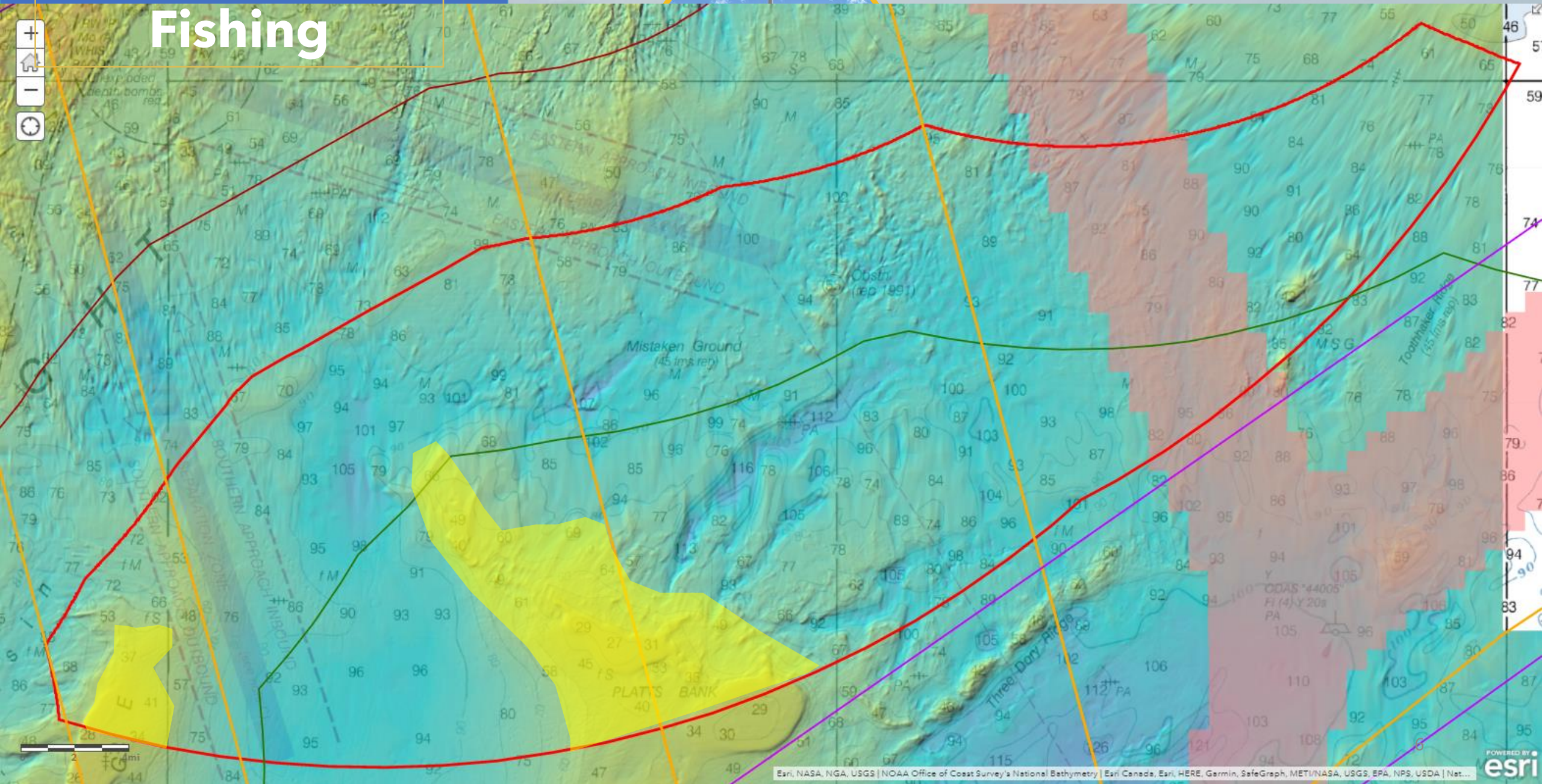
DOD Exclusion Area Shipping Lanes



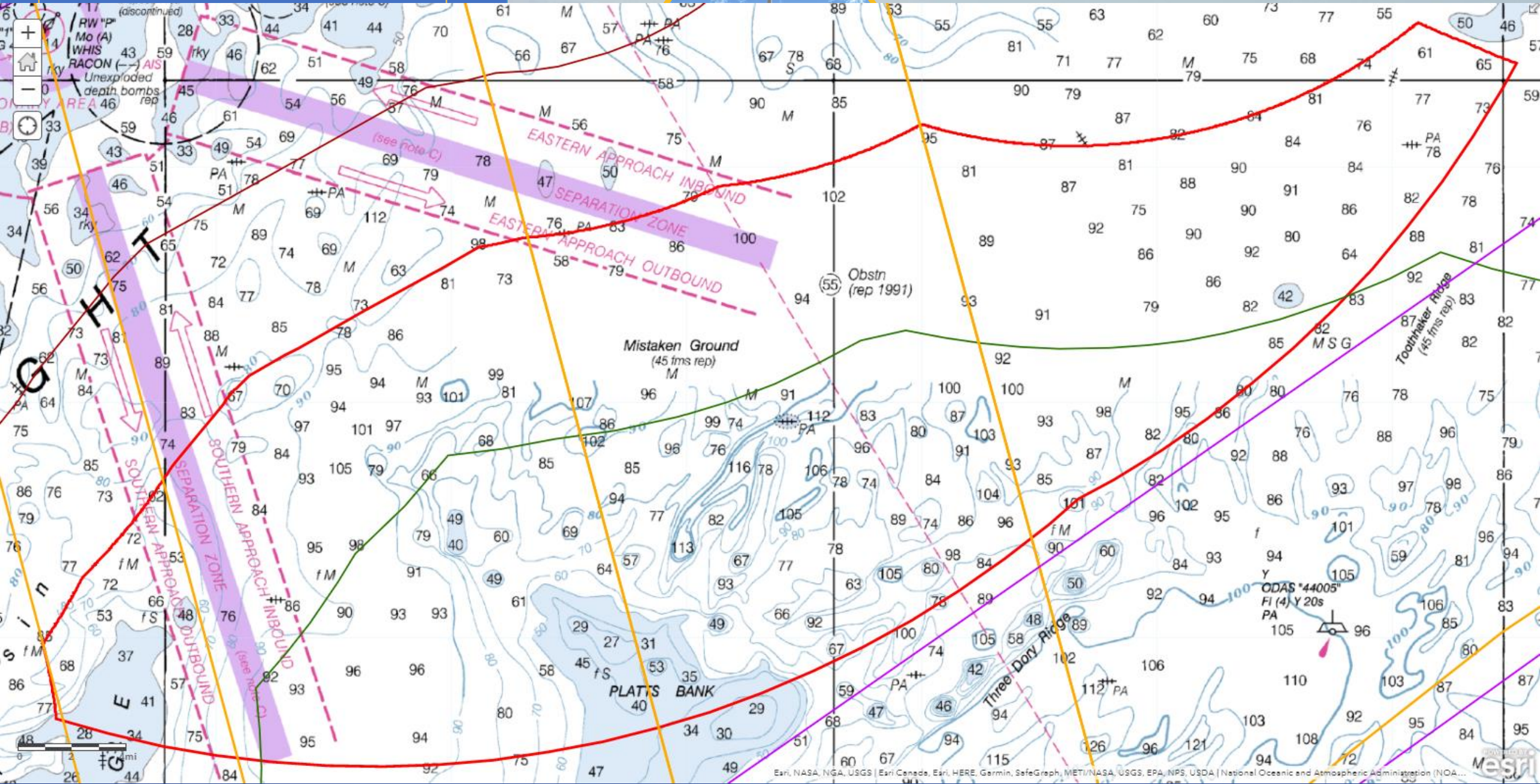
Bathymetry



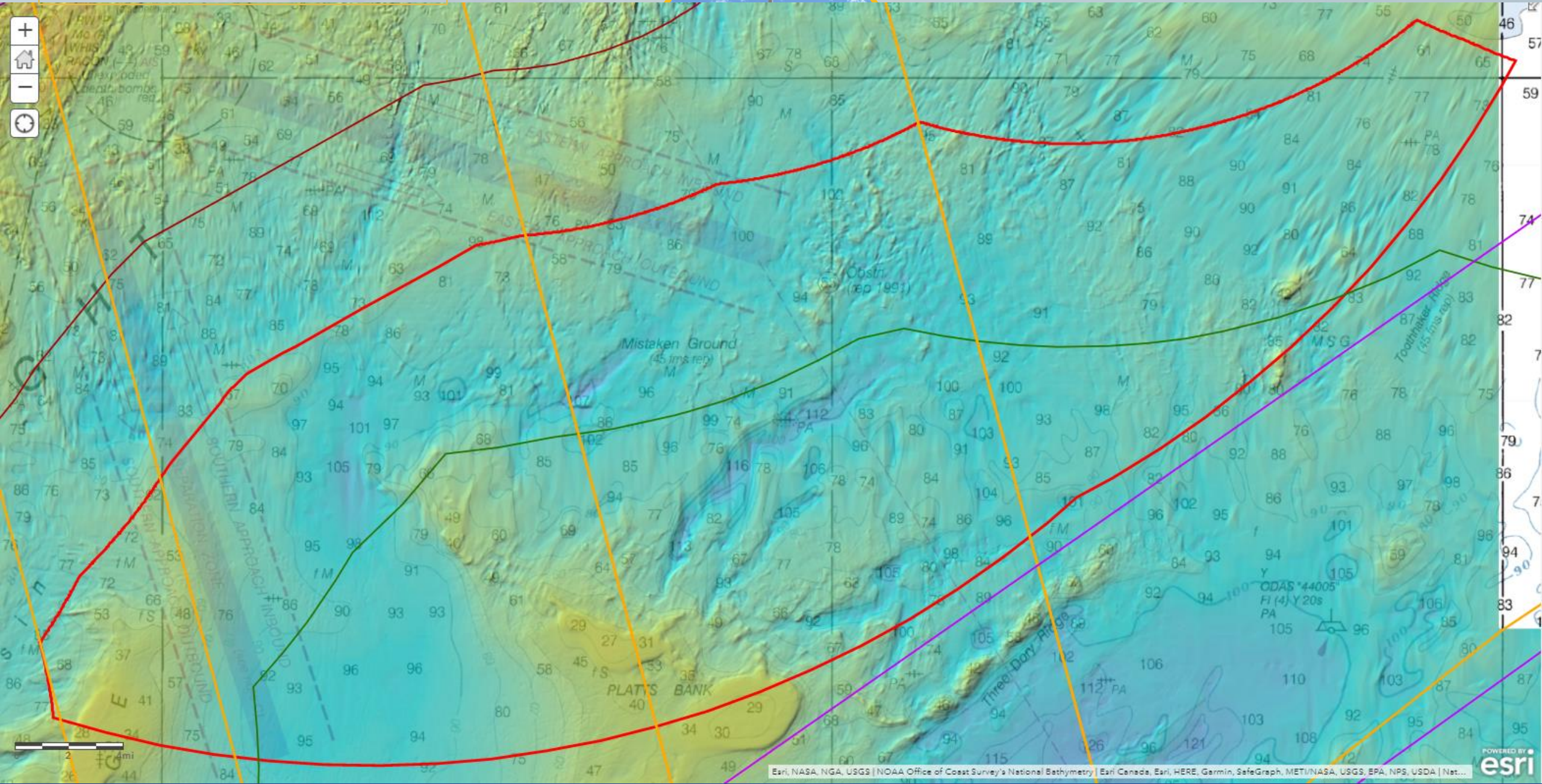
Recreational Fishing

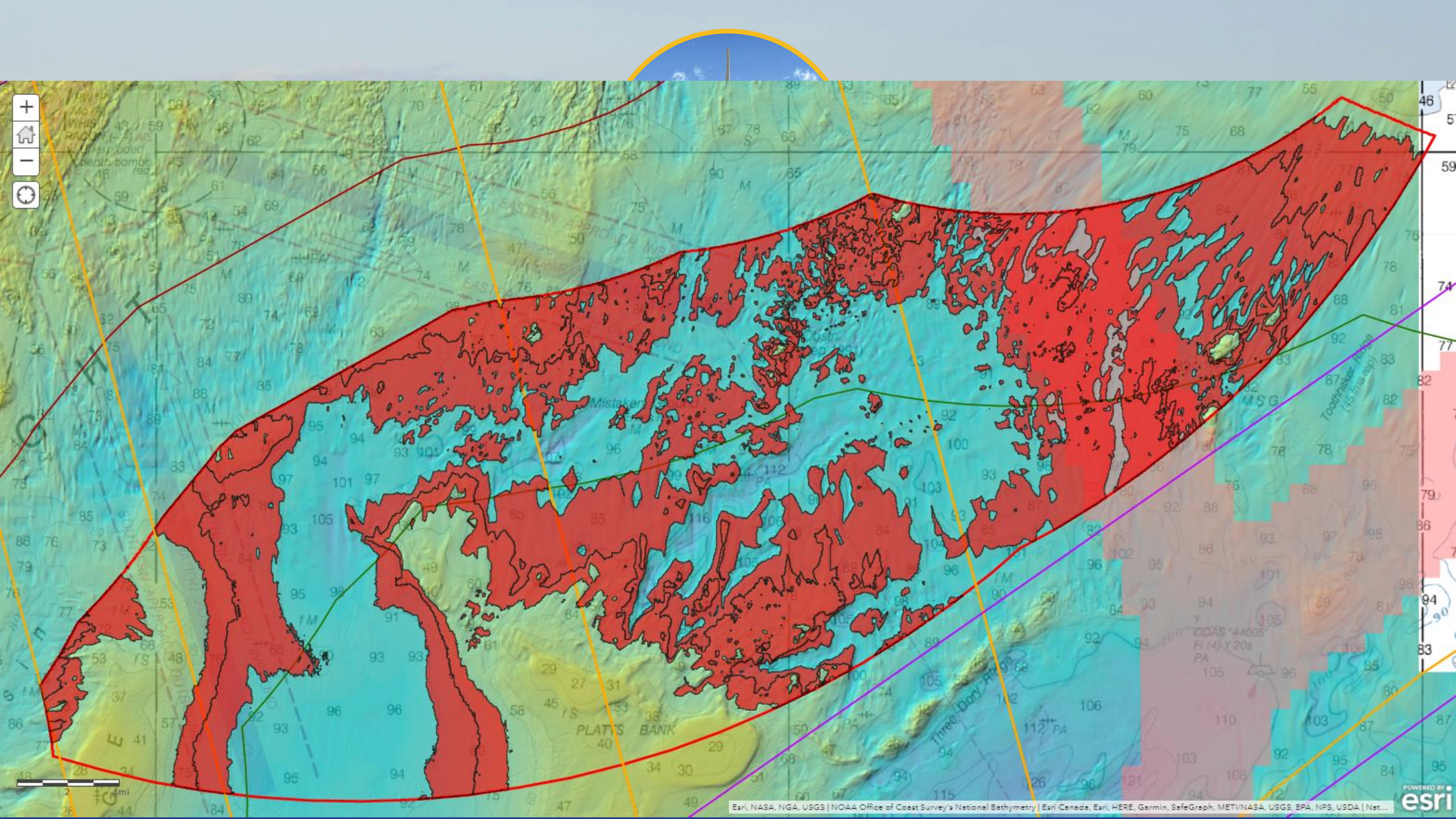


Lobster Fishing

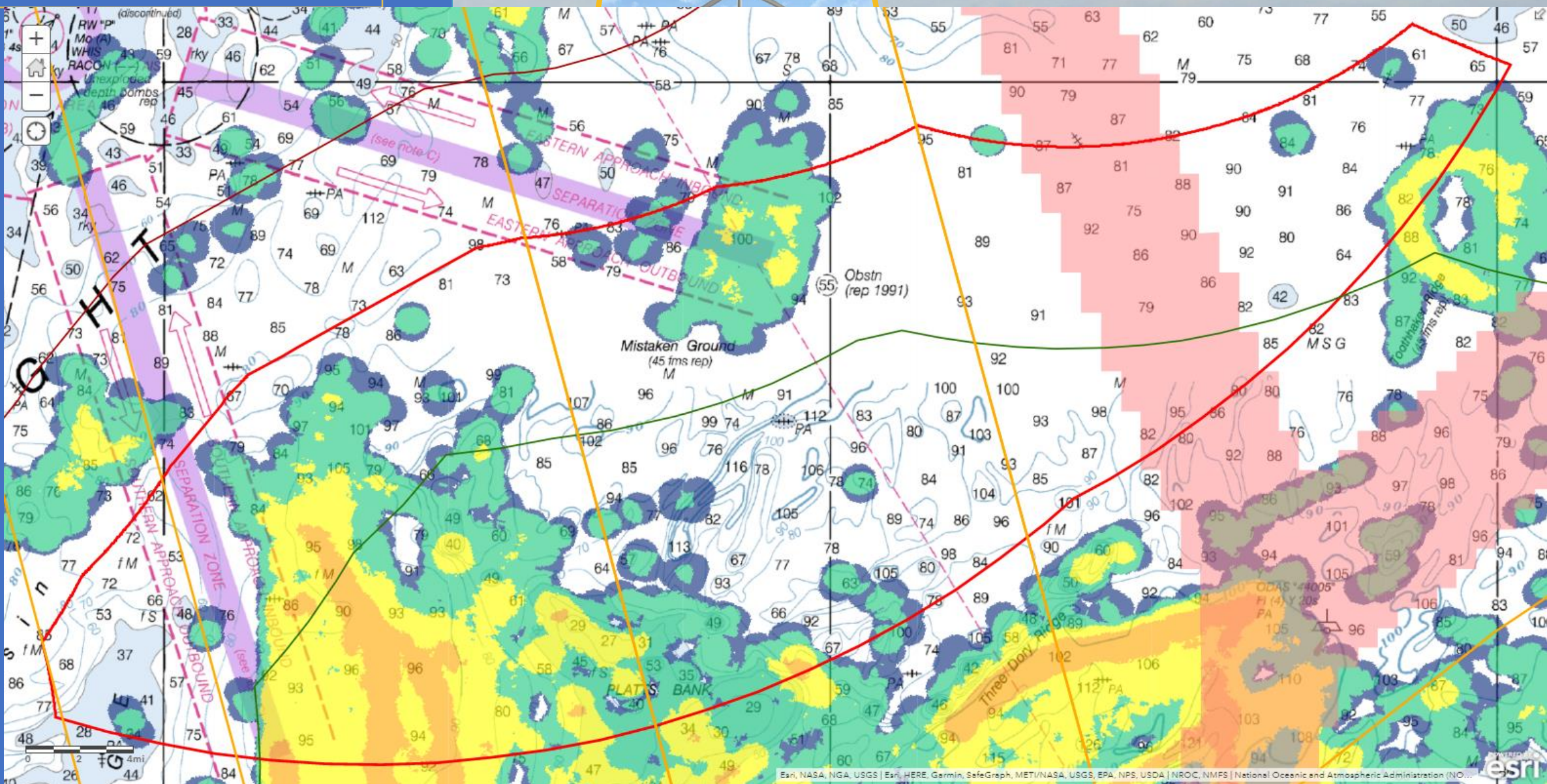


Lobster Fishing

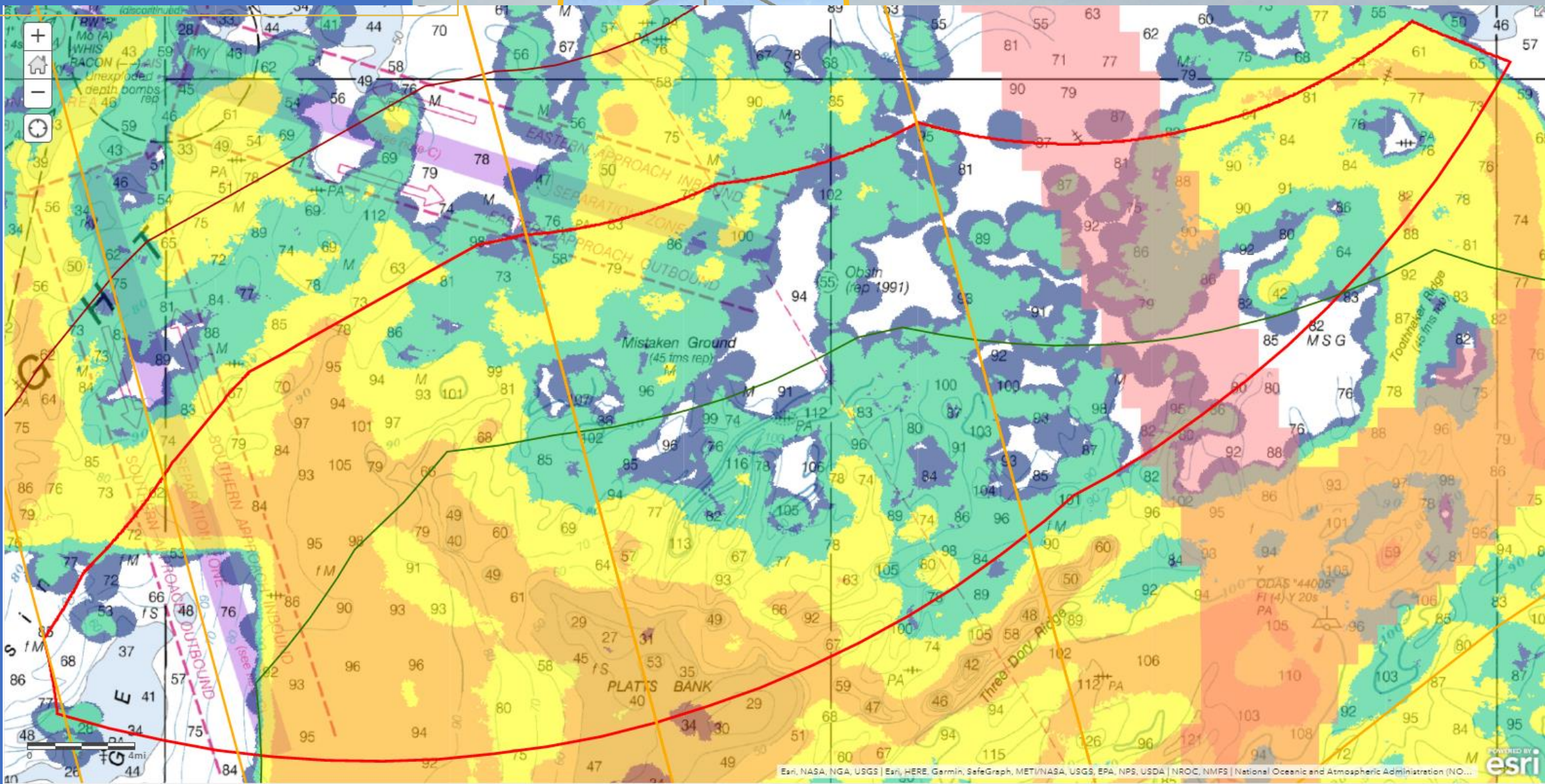




Multispecies 2015-2016

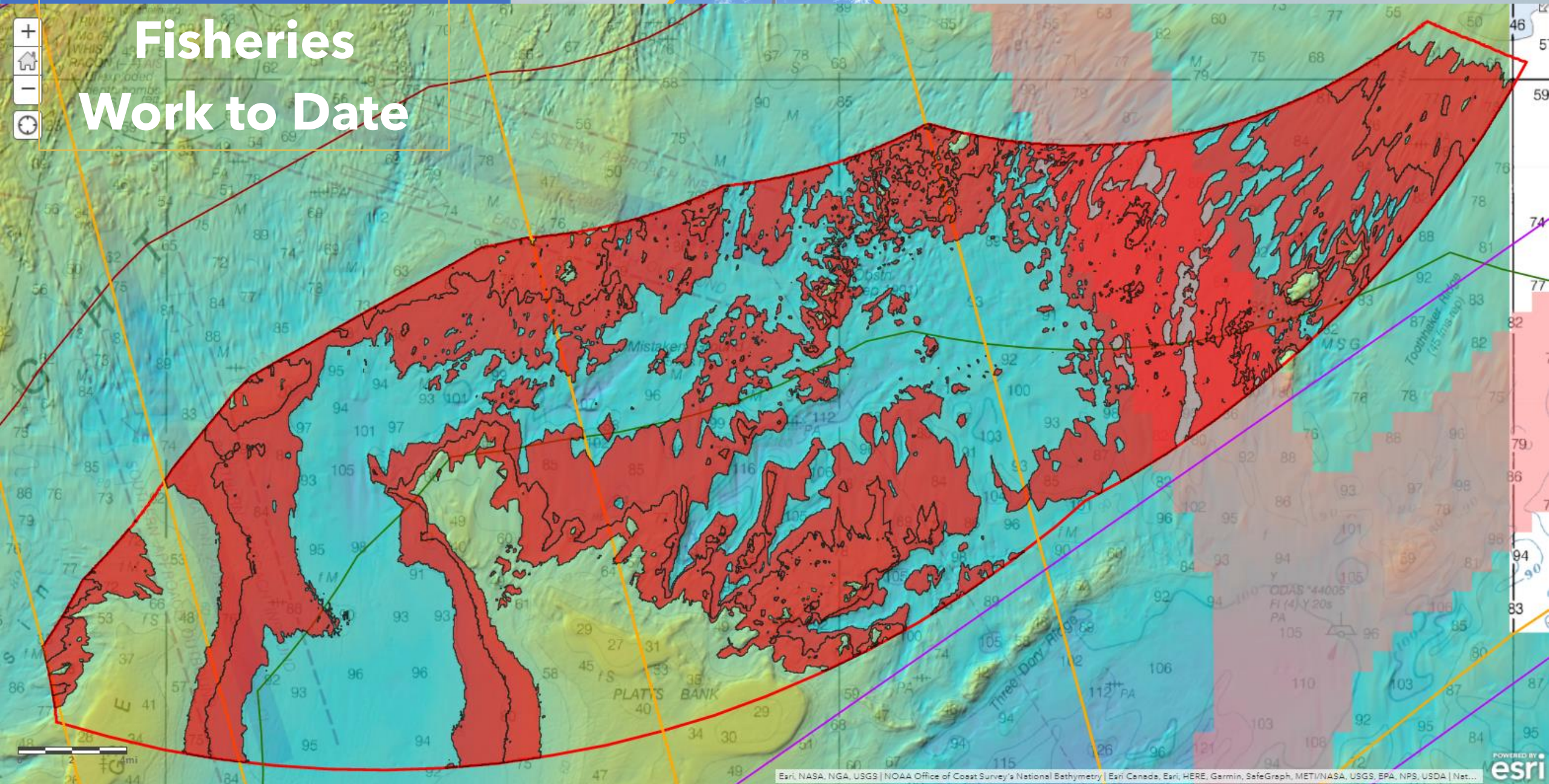


Multispecies 2011-2014

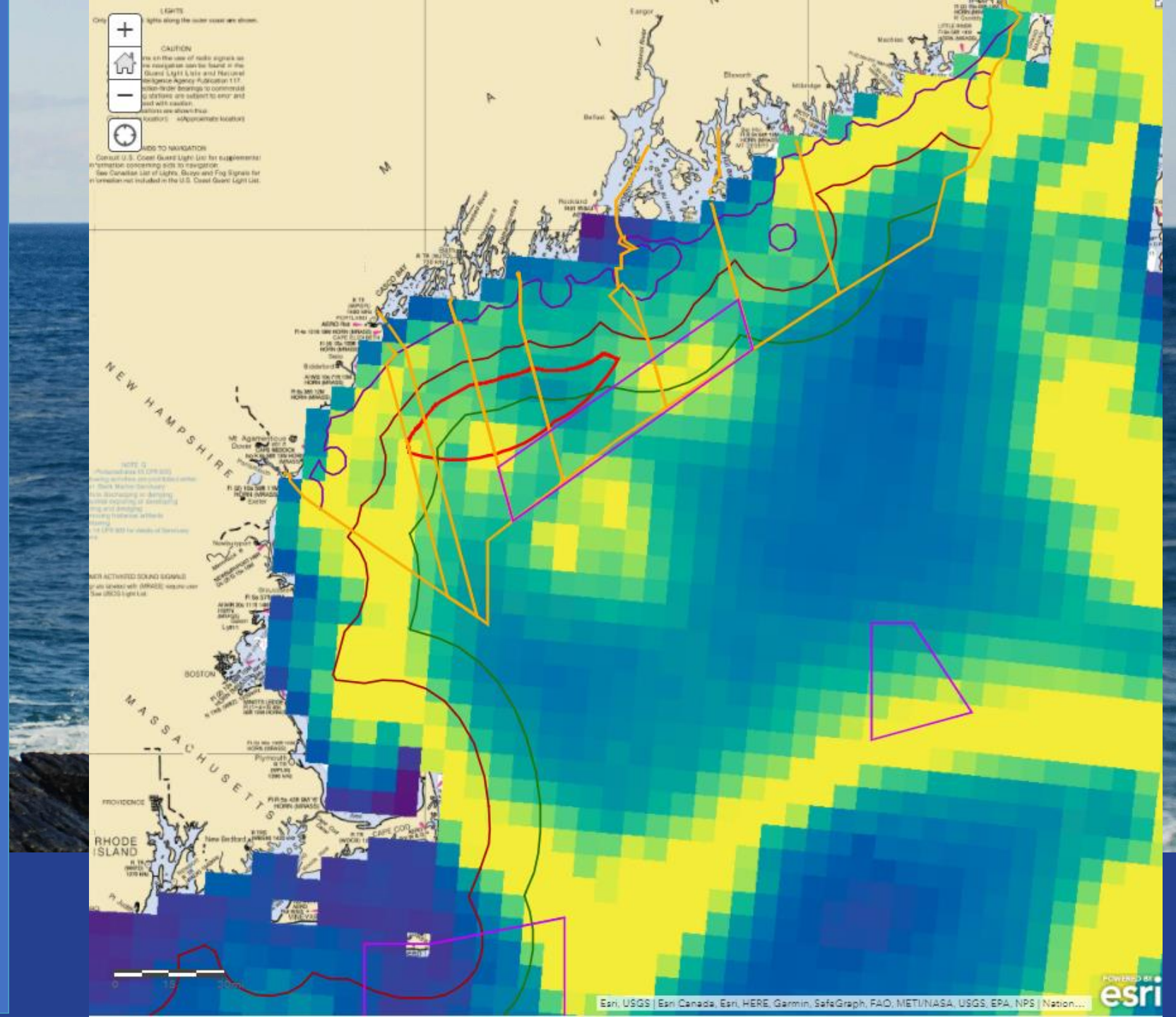


Overview

Fisheries Work to Date



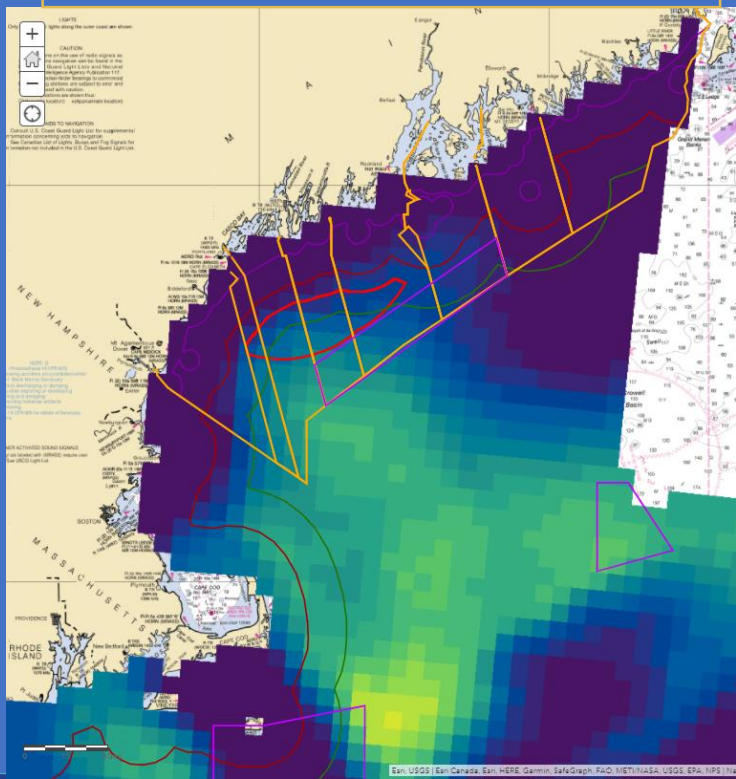
Baleen Whales Abundance



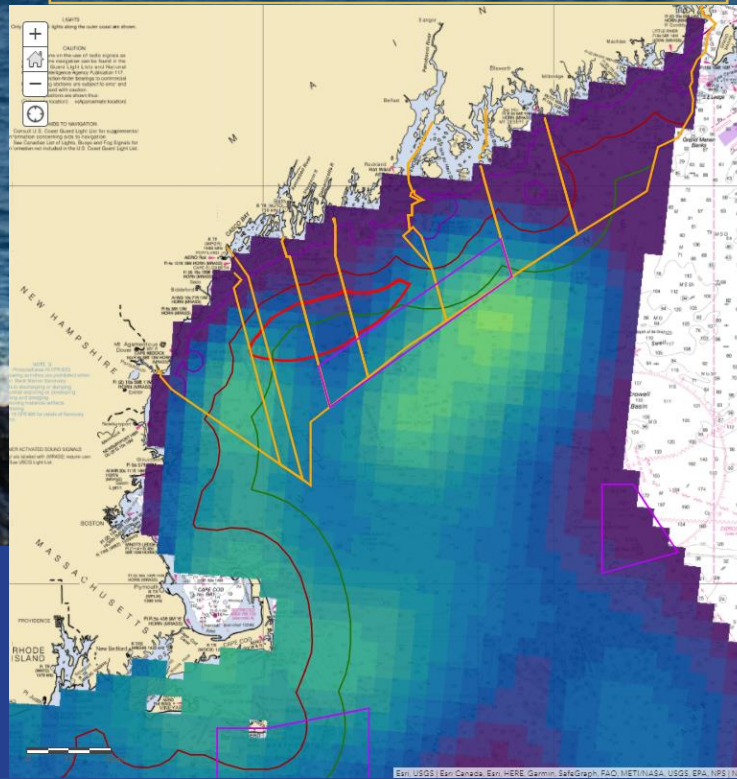
North Atlantic Right Whale MDAT - Abundance



January



May



October

