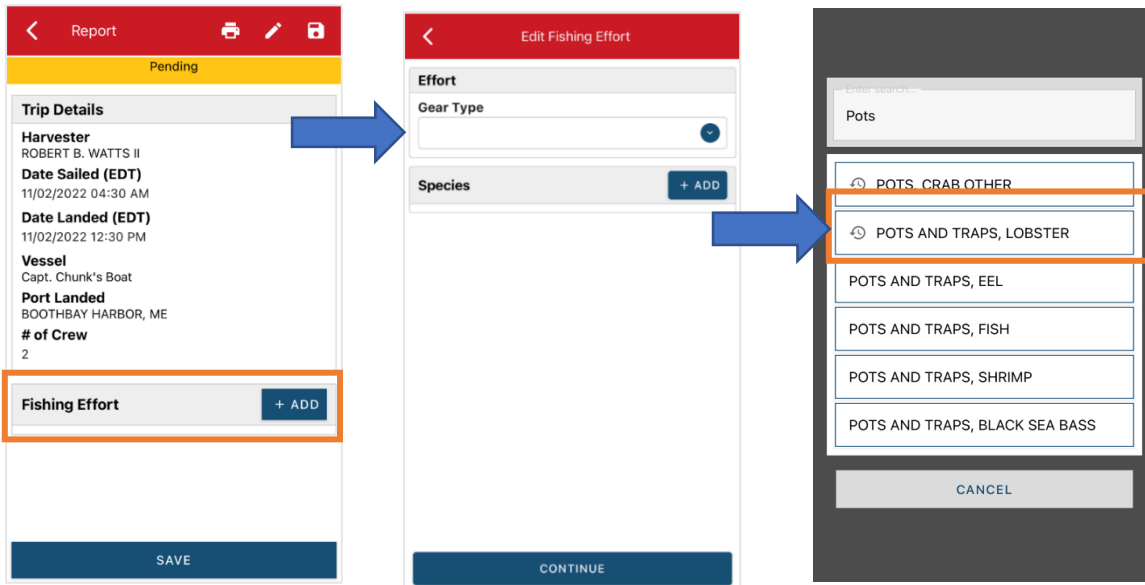


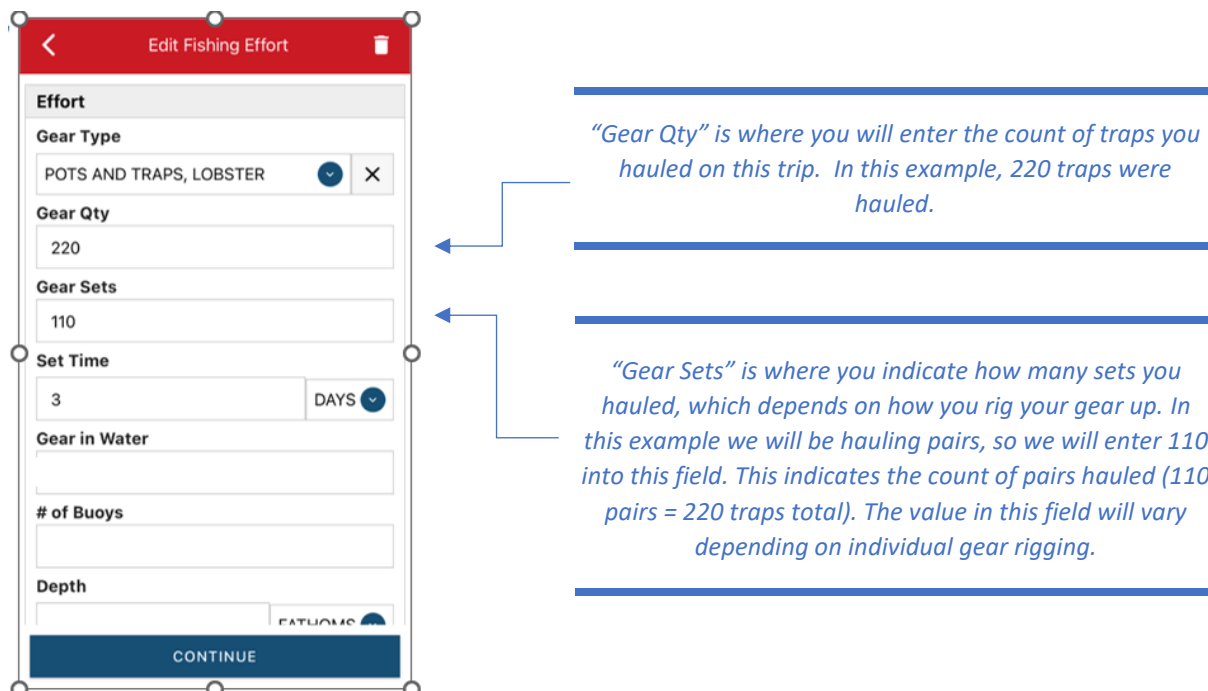
ENTERING LOBSTER FISHING EFFORT INFORMATION IN THE VESL APP

The instructions below explain how to fill out reporting fields that relate to traps hauled and traps in the water. Please contact us at 207-633-9414 if you have questions.

- 1) After you've created a new report in the VESL app and entered your Trip Details, you will click the +ADD button next to Fishing Effort. The first question asks for "Gear Type". For lobster, the "Gear Type" is always POTS AND TRAPS, LOBSTER. This is important as it will dictate the fields you see next.



- 2) Once you choose Pots and Traps, Lobster for "Gear Type", you will enter the total traps hauled and number of sets hauled on this trip.



- 3) Once you fill out your “Set Time” (typically “days” for set time unit), the report asks for total traps in water and total buoys in water at the start of your trip.

The screenshot shows the 'Edit Fishing Effort' form with the following values:

- Gear Type:** POTS AND TRAPS, LOBSTER
- Gear Qty:** 220
- Gear Sets:** 110
- Set Time:** 3 DAYS
- Gear in Water:** 550
- # of Buoys:** 275
- Depth:** (empty)

“Gear in Water” is where you put the total traps you had in the water at the start of the trip. In this example there are 550 traps in the water.

“# of Buoys” is where you put the TOTAL count of buoys you had in the water at the start of the trip. This will depend on gear rigging/number of endlines. In this example, we are still hauling pairs. If there are 550 traps in the water all rigged as pairs, we will have 275 buoys. **Do not include toggles in your count.**

- 4) What if you don’t haul pairs? Below you will find two other examples with different gear configurations but with the same number of total traps and buoys in the water.

Example 1: 5-Trap Trawls with ONE endline

The screenshot shows the 'Edit Fishing Effort' form with the following values:

- Gear Type:** POTS AND TRAPS, LOBSTER
- Gear Qty:** 220
- Gear Sets:** 44
- Set Time:** 3 DAYS
- Gear in Water:** 550
- # of Buoys:** 110
- Depth:** (empty)

Here “Gear Sets” is lower than if we were hauling pairs because we are hauling 5-trap trawls. The 44 indicates that we hauled 44 individual 5-trap trawls, for a total of 220 traps hauled.

Here “# of Buoys” are lower because all 550 traps are rigged as 5-trap trawls with one endline and one buoy. 550 divided by 5 would be 110 5-trap trawls. 110 endlines multiplied by 1 buoy is 110. **Do not include toggles in your count.**

Example 2: 10-Trap Trawls with TWO endlines

Effort

Gear Type
POTS AND TRAPS, LOBSTER

Gear Qty
220

Gear Sets
22

Set Time
3 DAYS

Gear in Water
550

of Buoys
110

Depth

CONTINUE

Here "Gear Sets" are even lower because we are hauling 10-trap trawls. The 22 indicates that we hauled 22 individual 10-trap trawls for a total of 220 traps hauled.

*The "# of buoys" hasn't changed. All 550 traps are rigged as 10- trap trawls with two endlines/two buoys. 550 divided by 10 would be 55 10-trap trawls. However, since each trawl has two endlines/two buoys, we need to multiply the 55 by 2 to get 110 endlines/buoys in the water. You still **do not include toggles in your count.***
