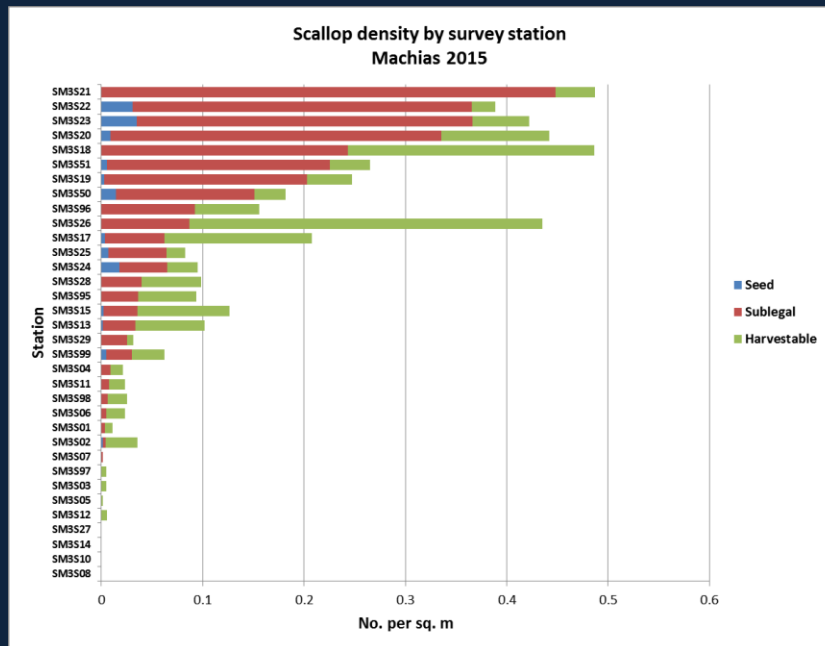
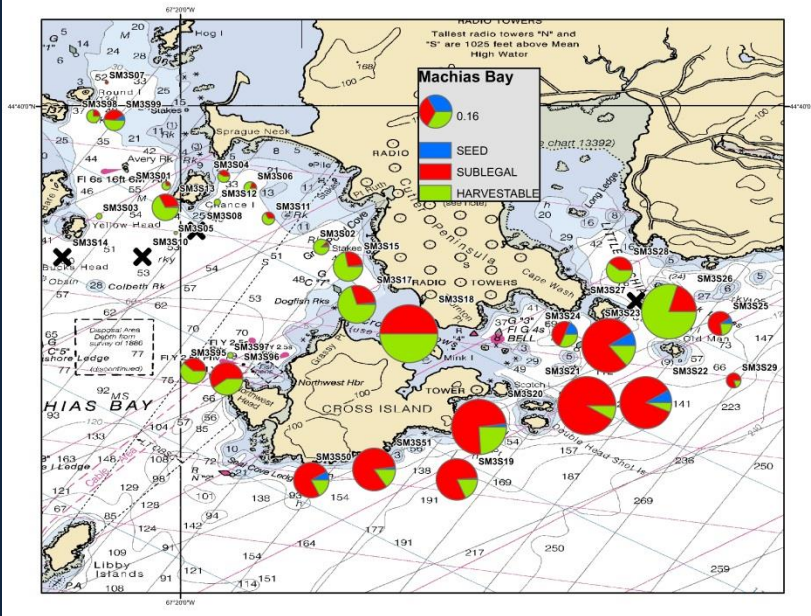
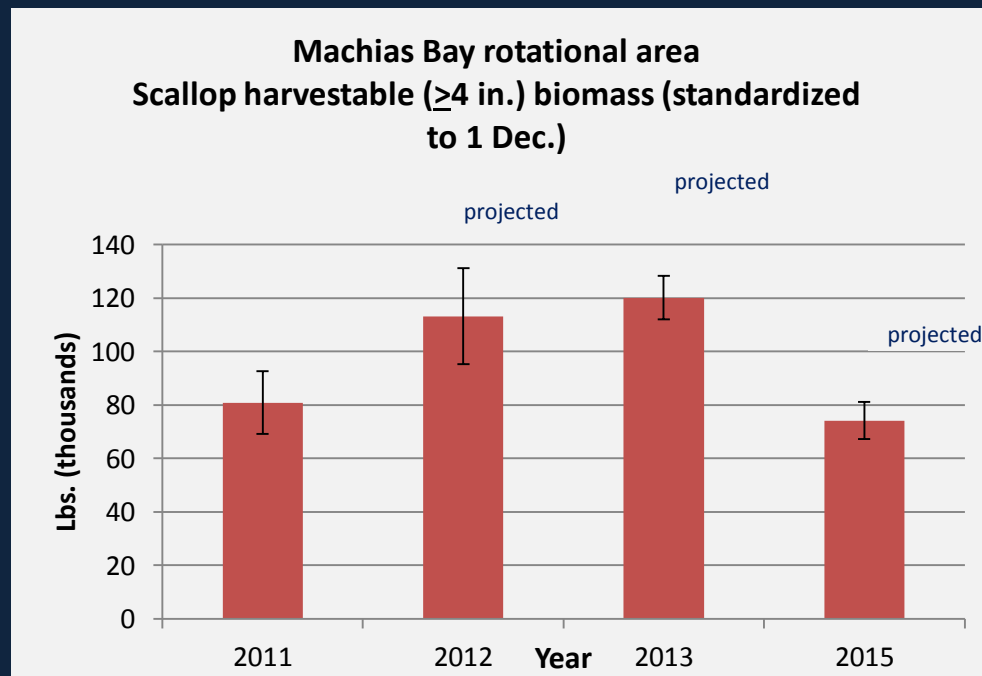
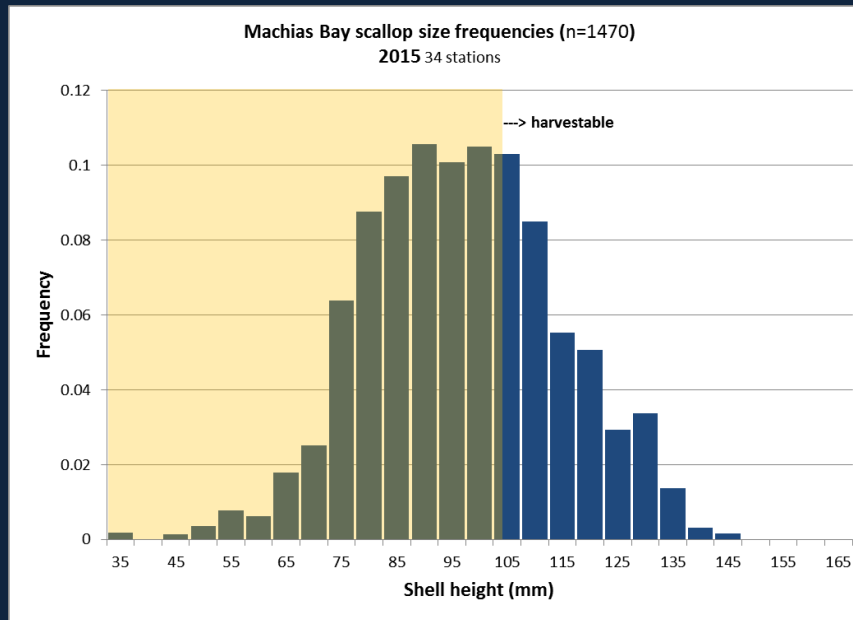
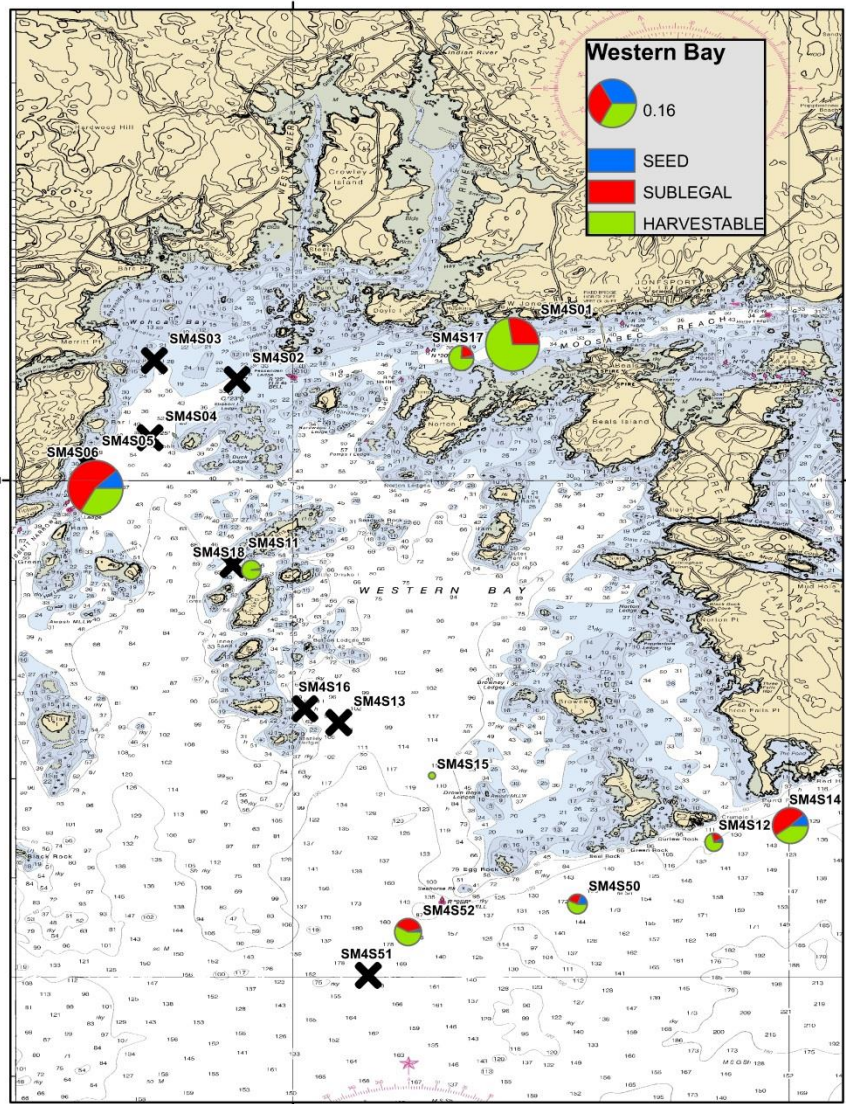
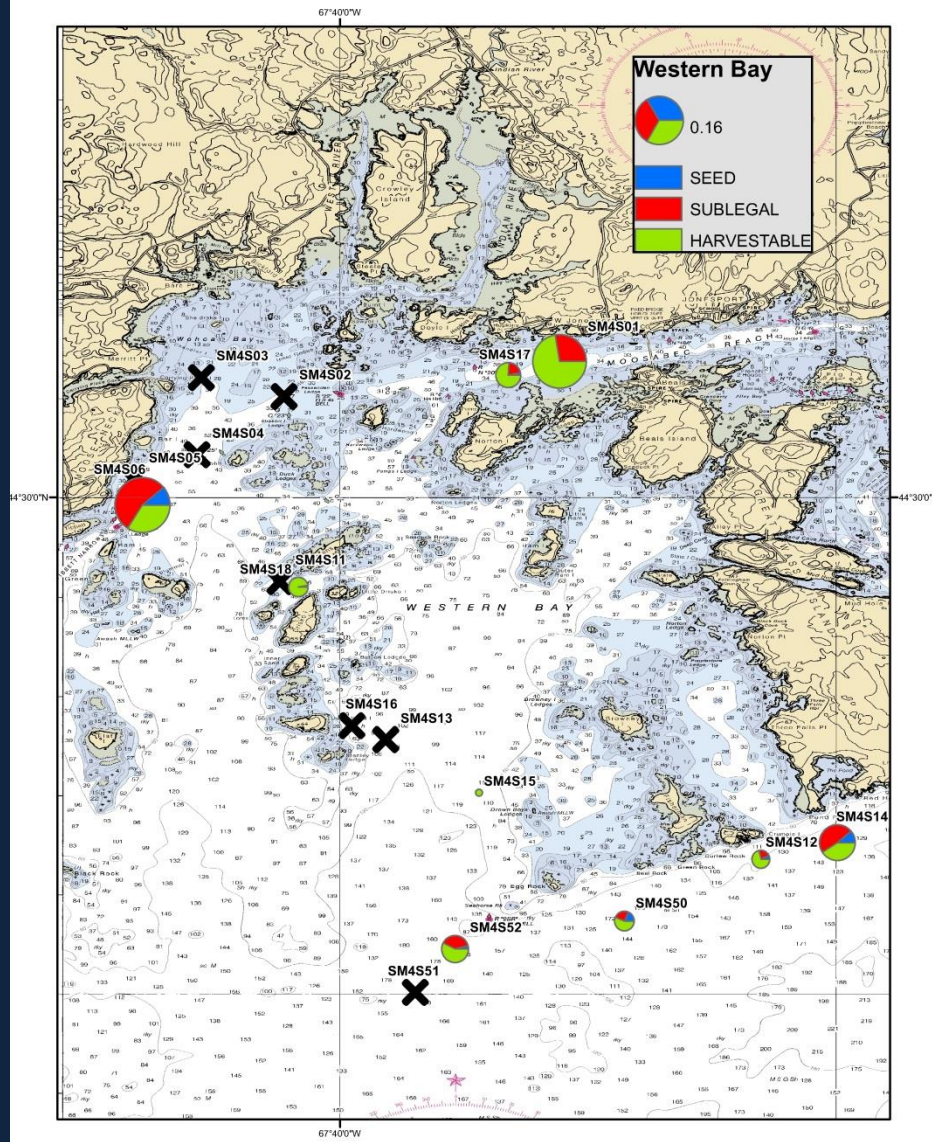


ME DMR Sea Scallop Survey spring 2015

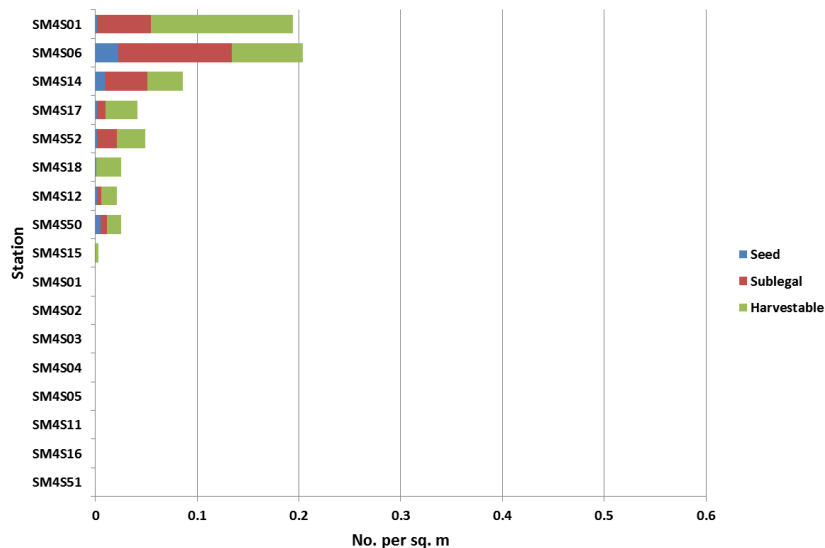
- **Six (6) eastern ME rotational areas**
- **Western ME: Muscle Ridge/Muscongus, Damariscotta/Sheepscot, Casco Bay**



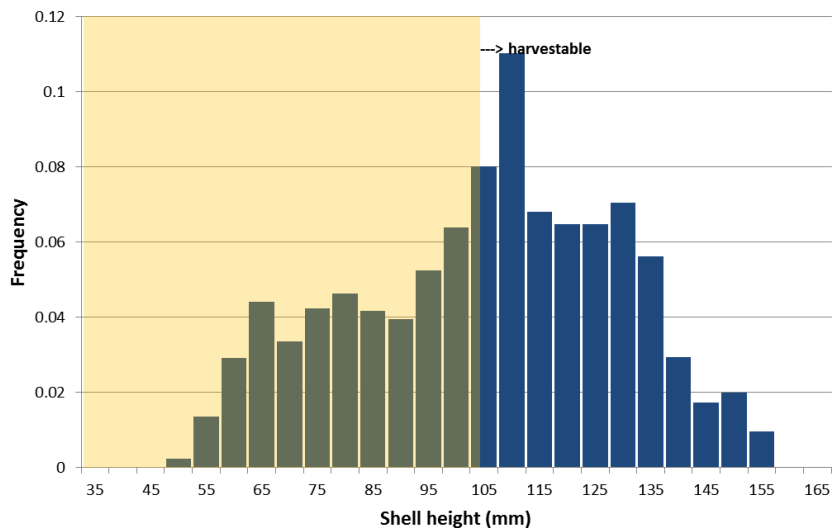


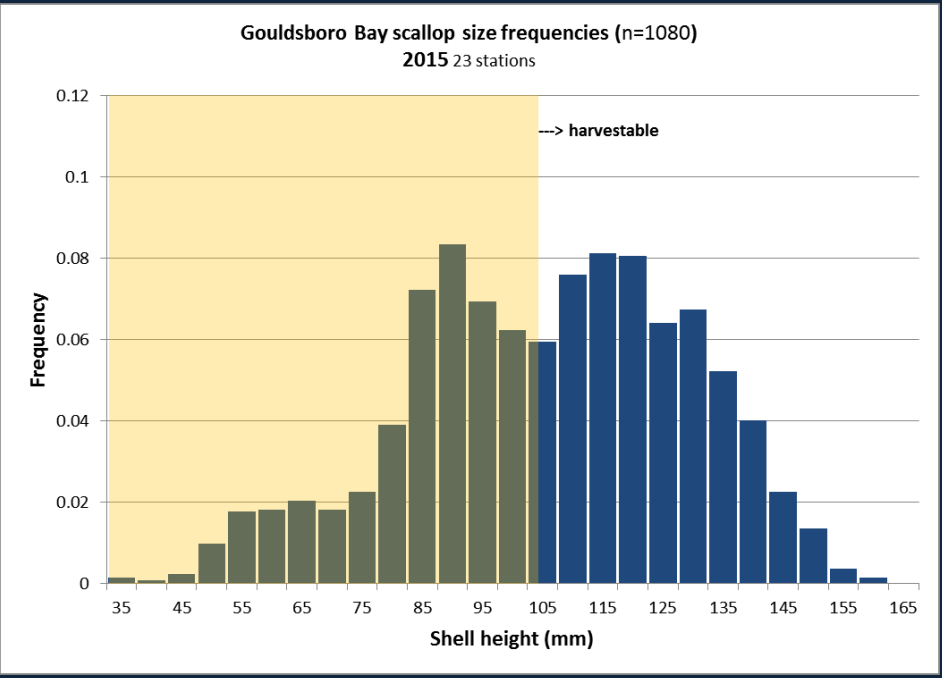
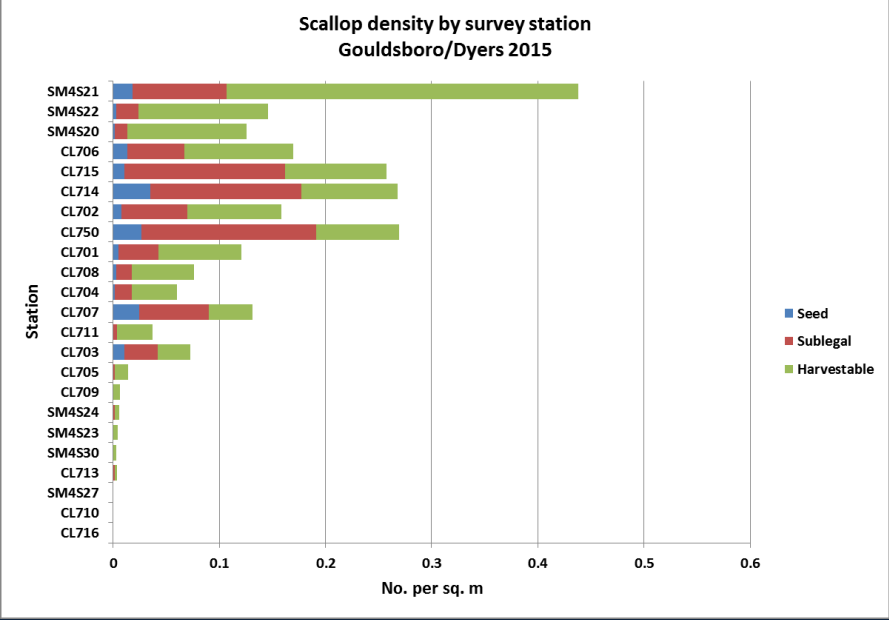


Scallop density by survey station
Western Bay 2015

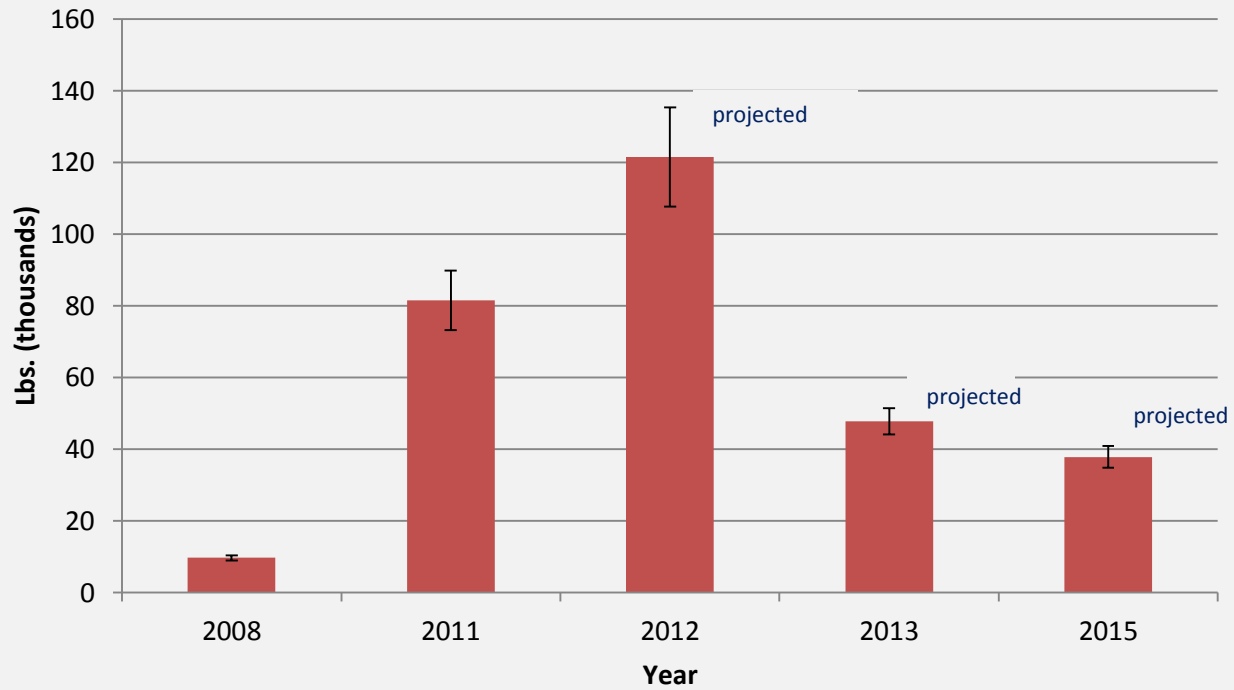


Western Bay scallop size frequencies (n=389)
2015 16 stations

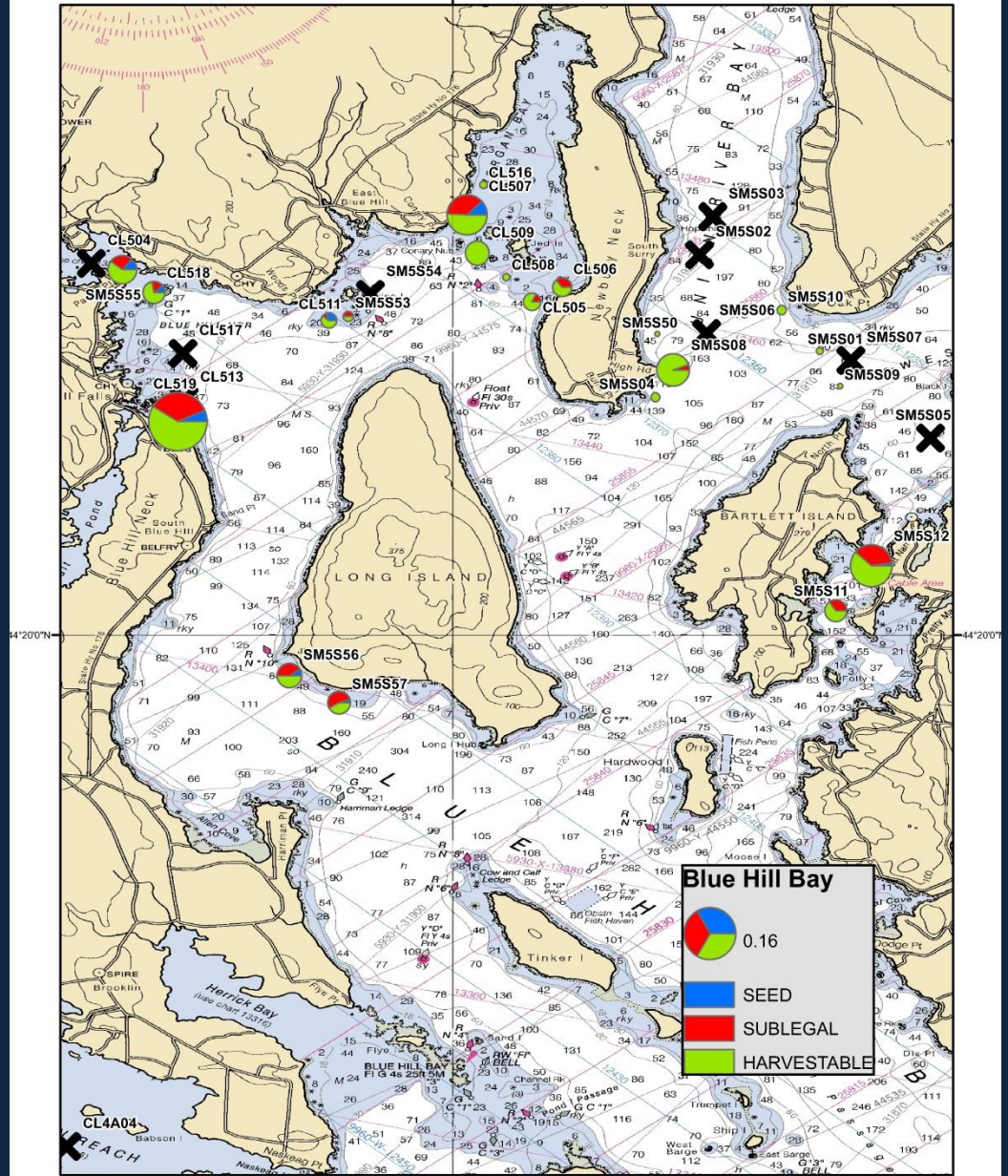




**Gouldsboro Bay
scallop harvestable (≥ 4 in.) biomass (standardized to 1 Dec.)**

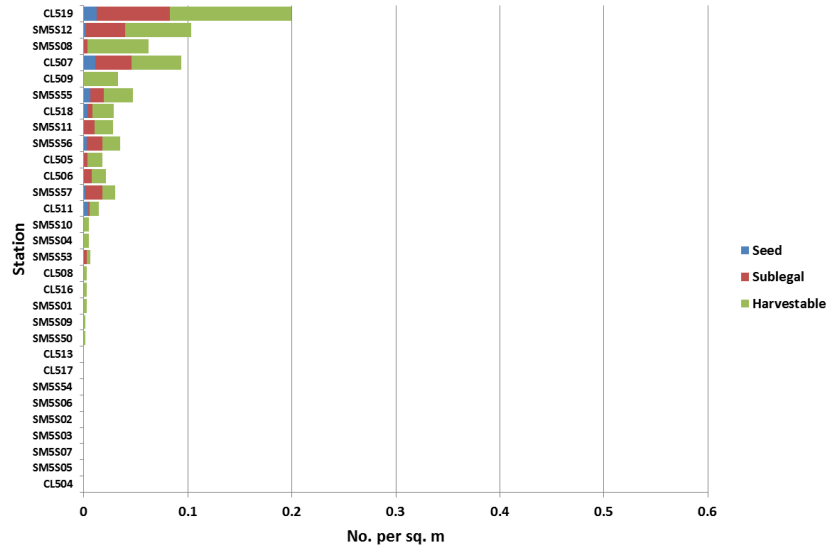


68°30'0"W

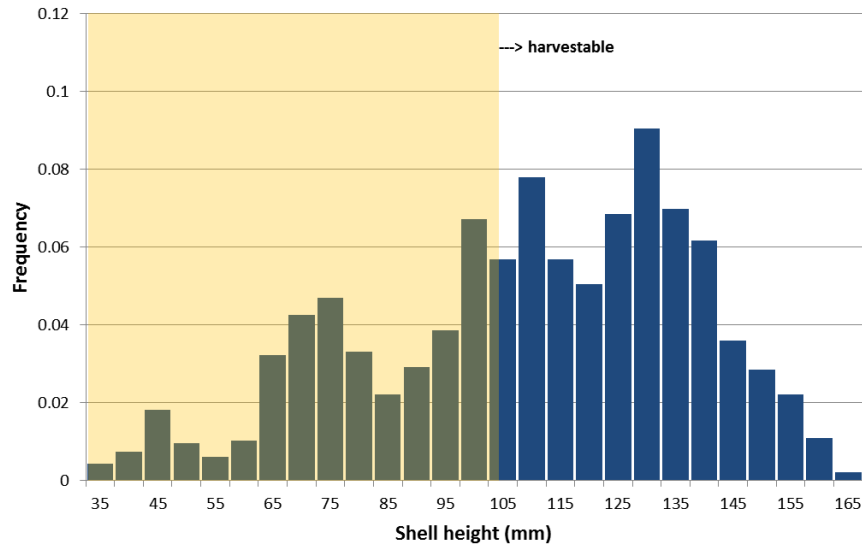


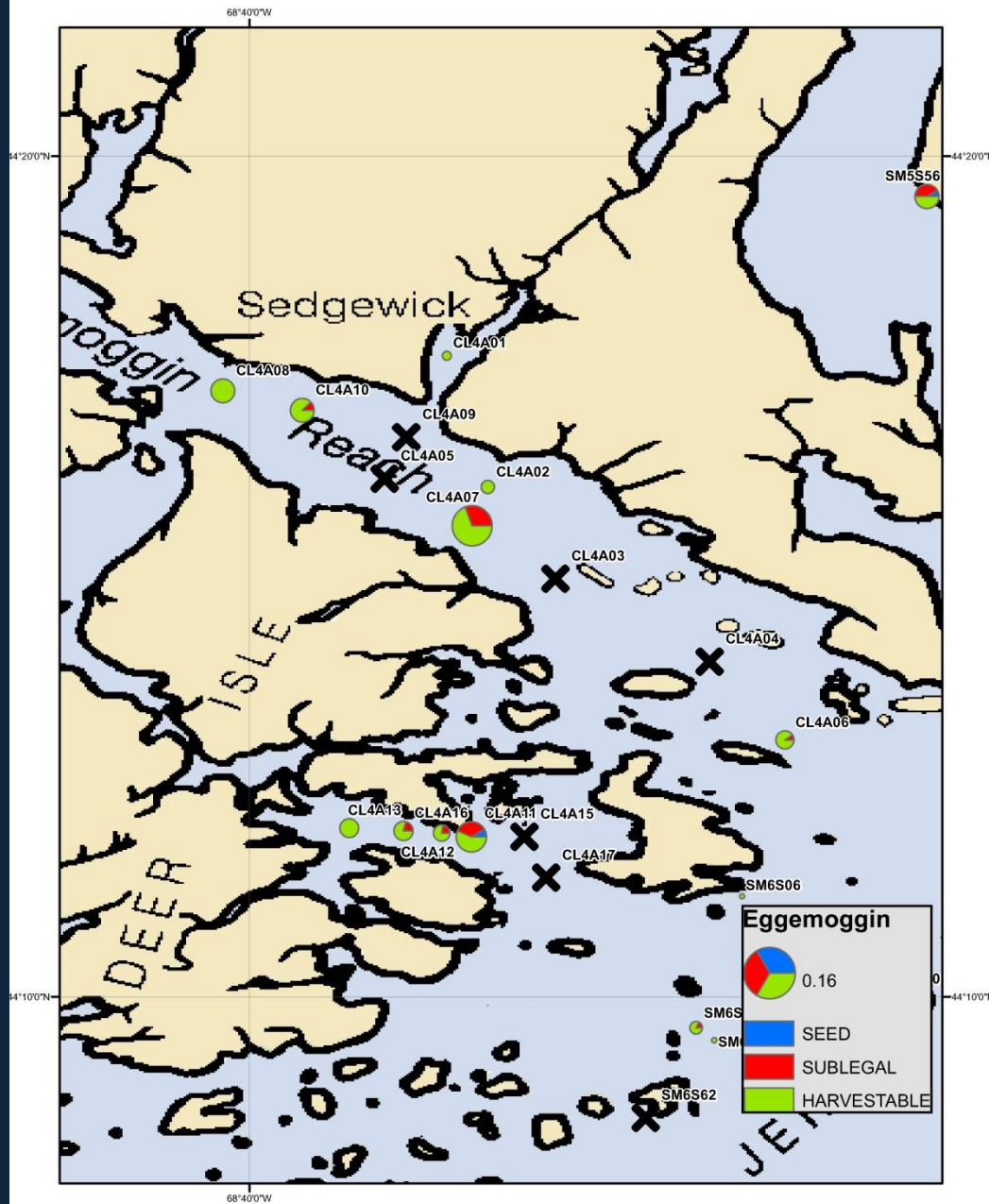
68°30'0"W

Scallop density by survey station
Blue Hill/Union River 2015

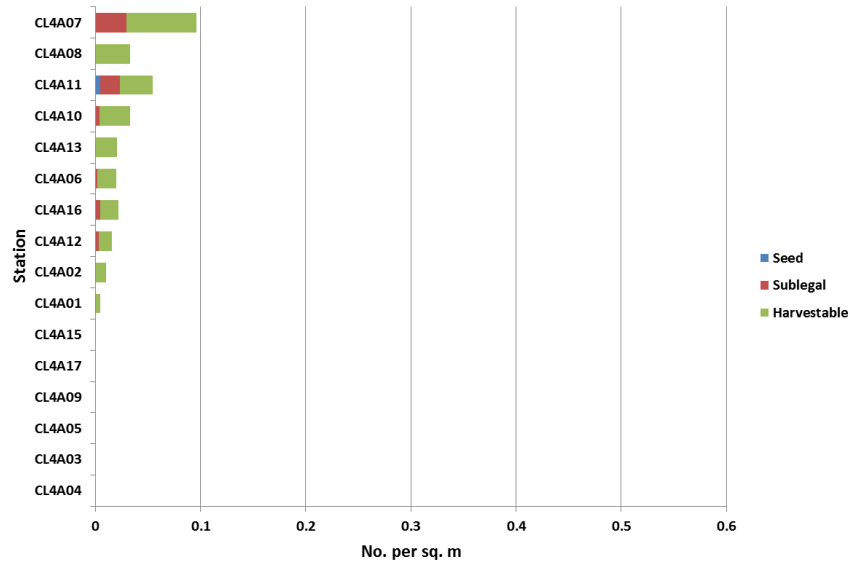


Blue Hill and Union River scallop size frequencies (n=425)
2015 30 stations

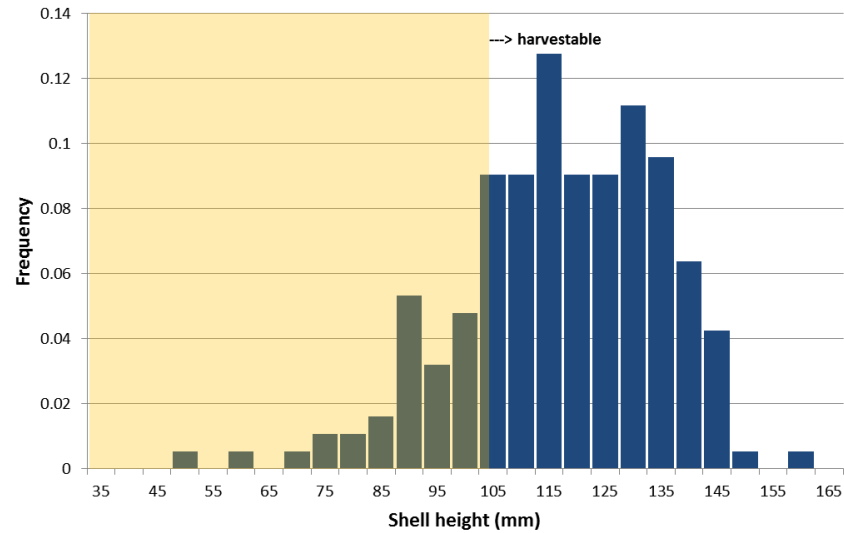


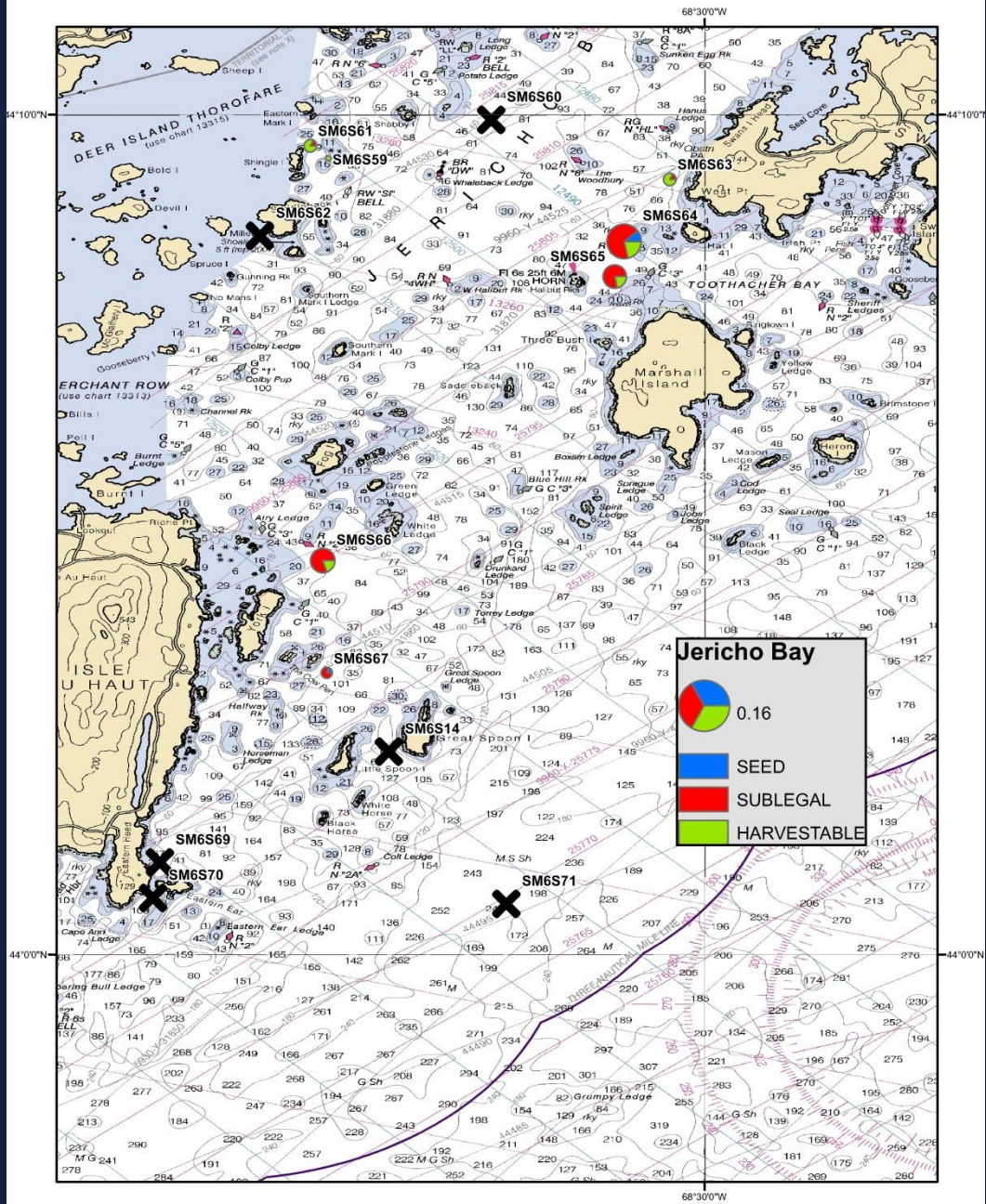


Scallop density by survey station
Eggemoggin/Southeast Harbor 2015

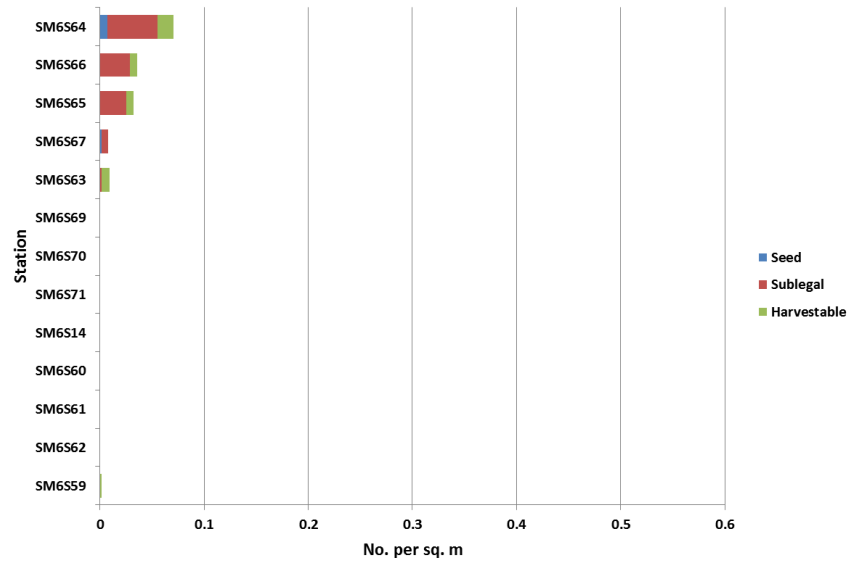


Eggemoggin and SE Harbor scallop size frequencies (n=188)
2015 16 stations

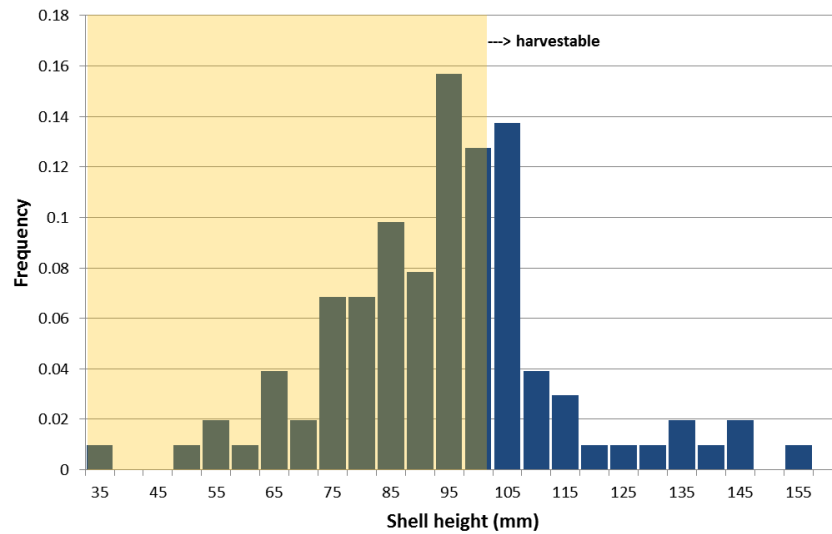


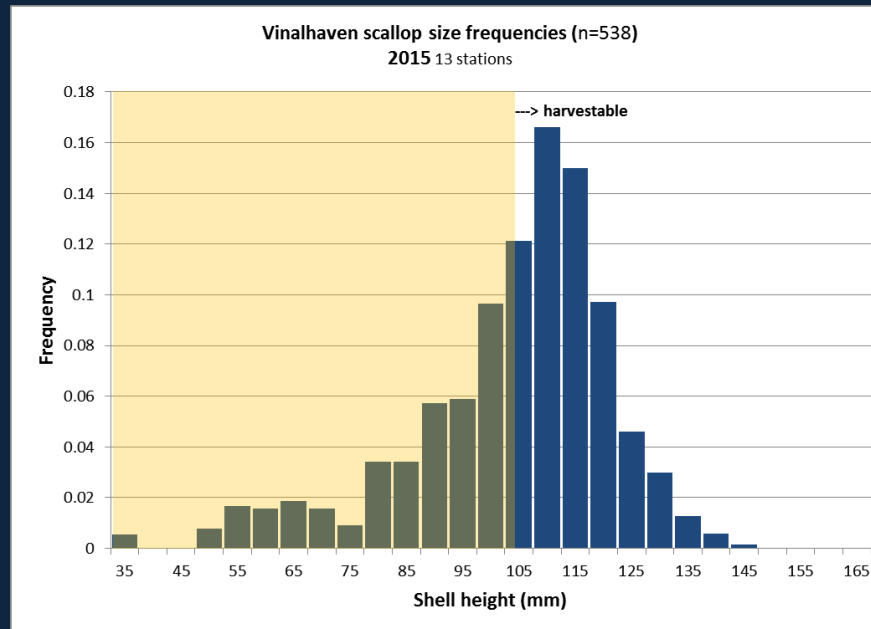
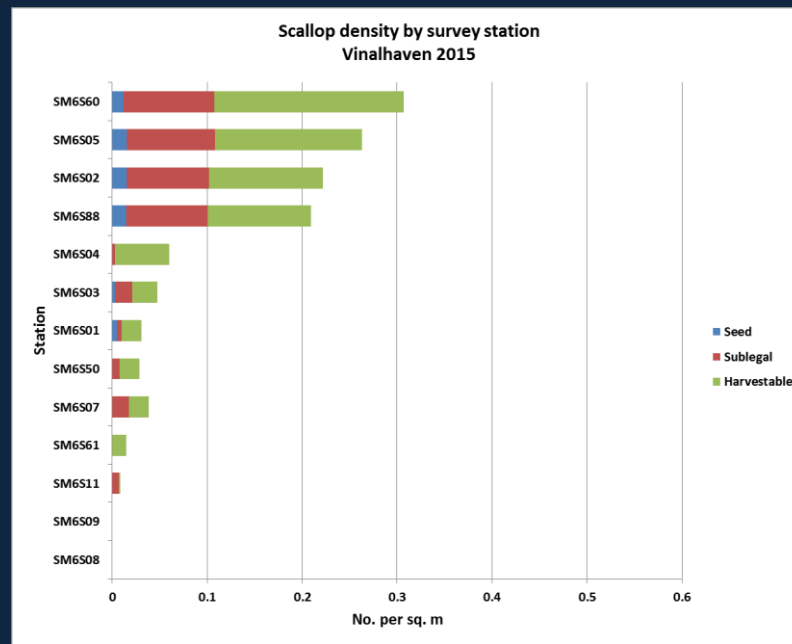


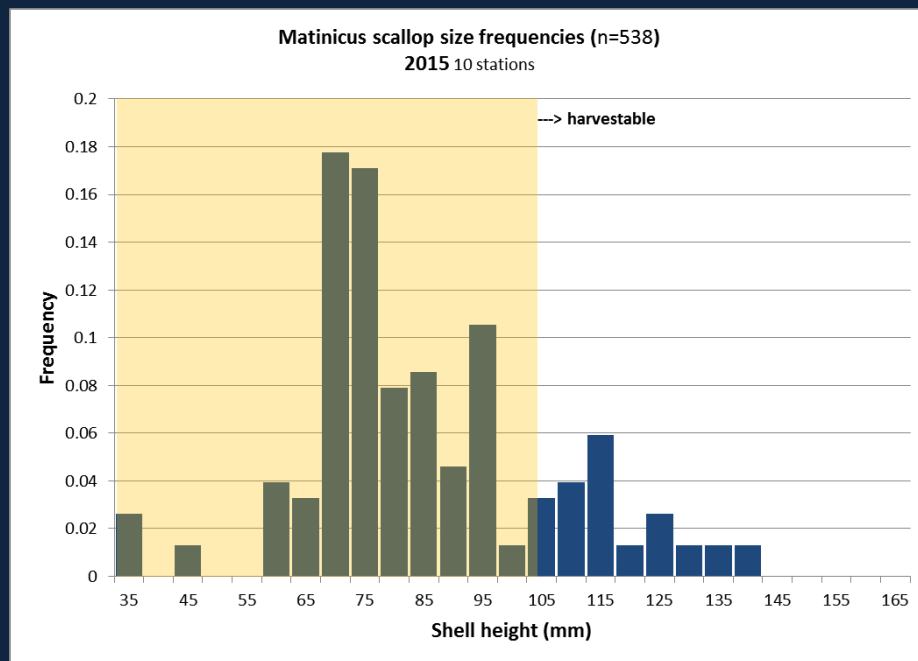
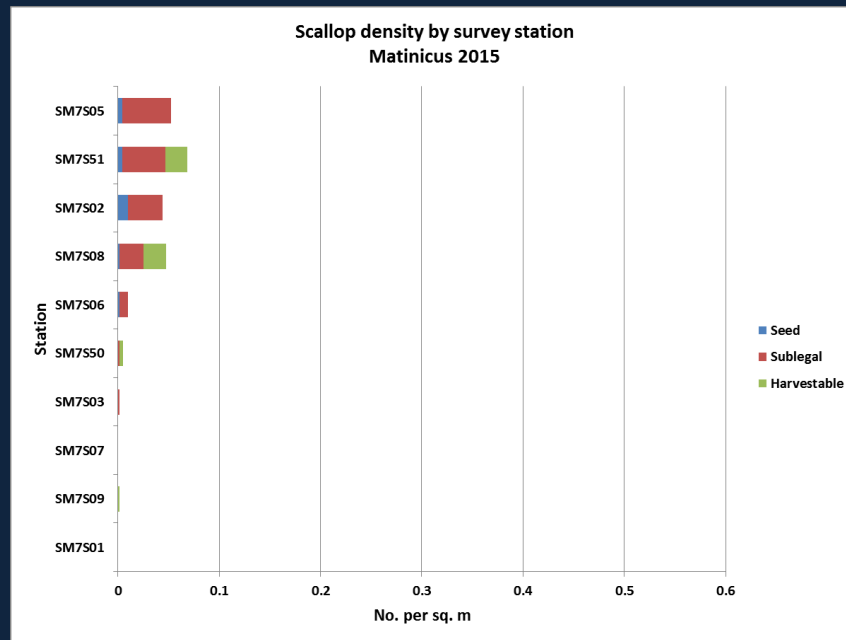
Scallop density by survey station
Jericho Bay 2015

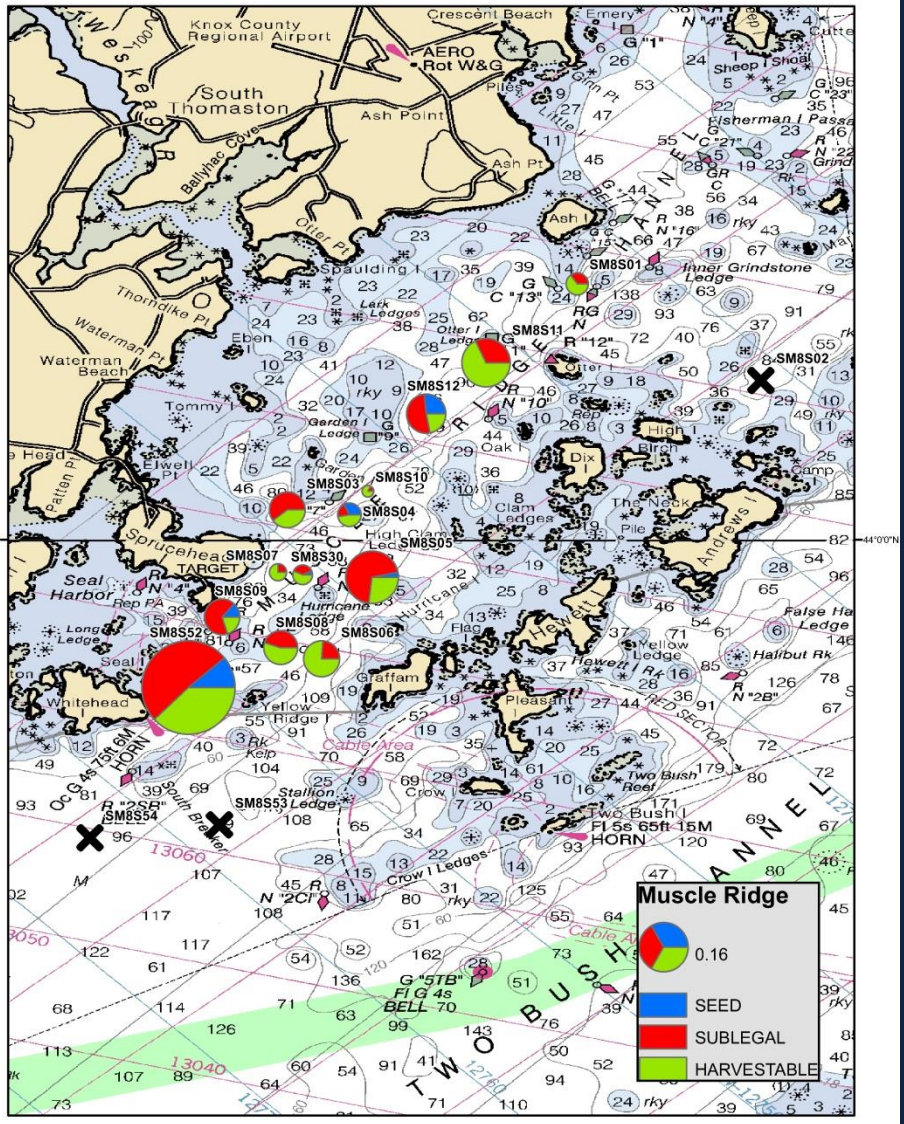


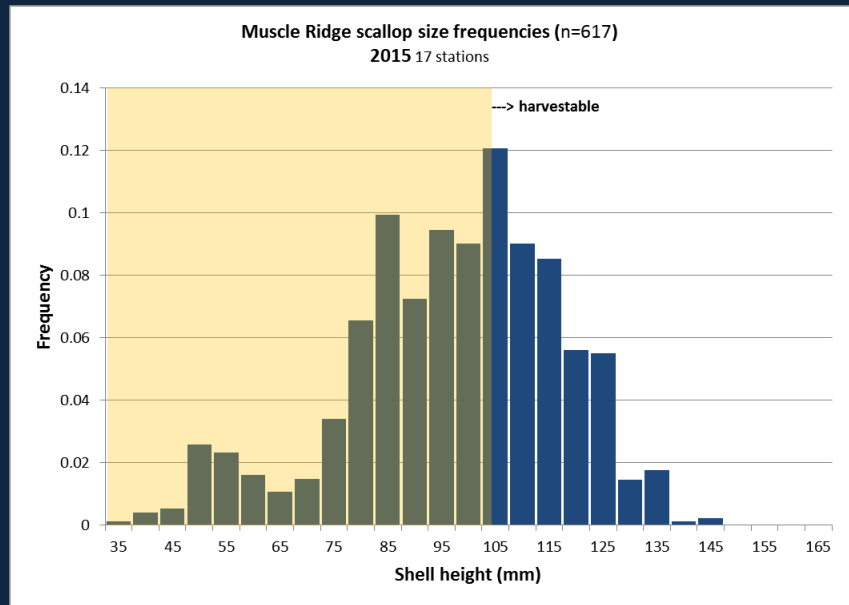
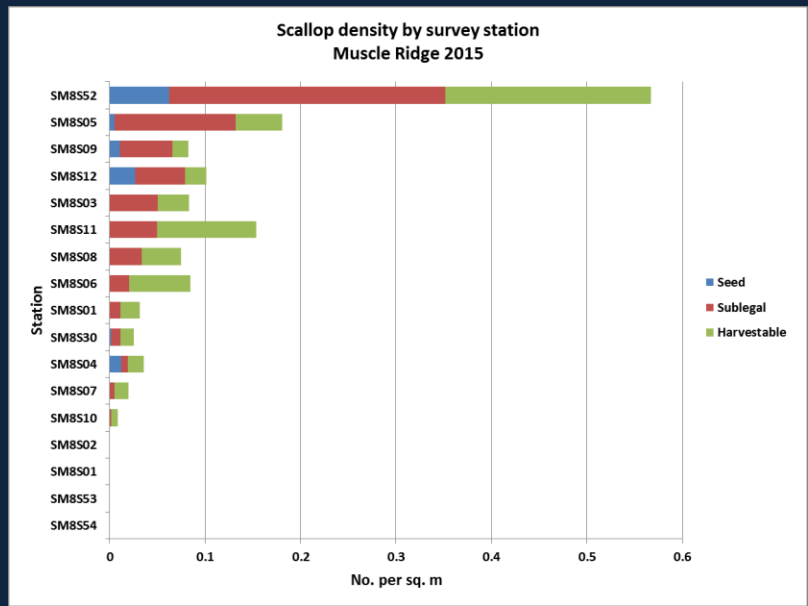
Jericho Bay scallop size frequencies (n=102)
2015 13 stations



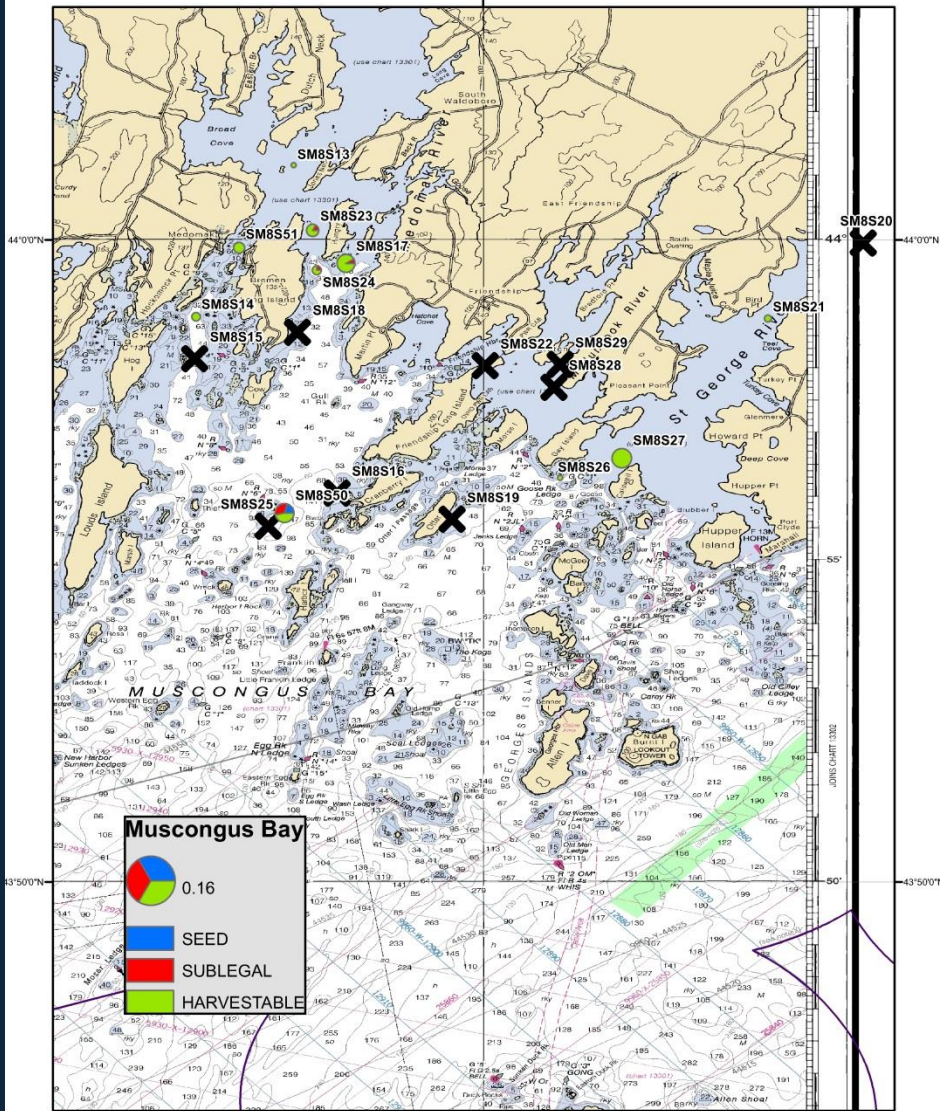




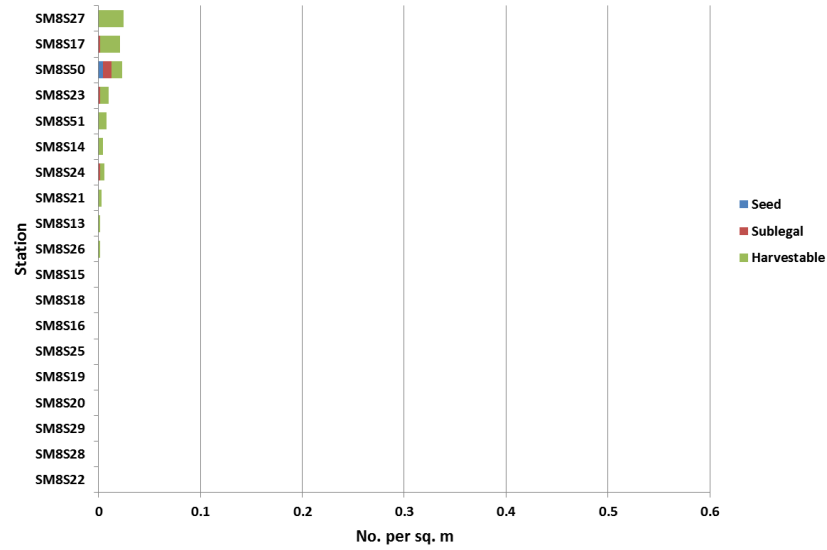




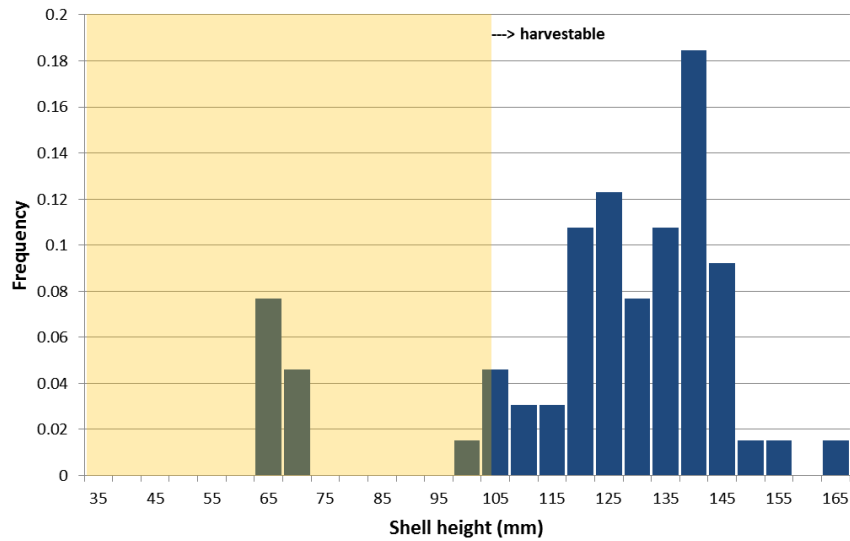
69°20'0"W

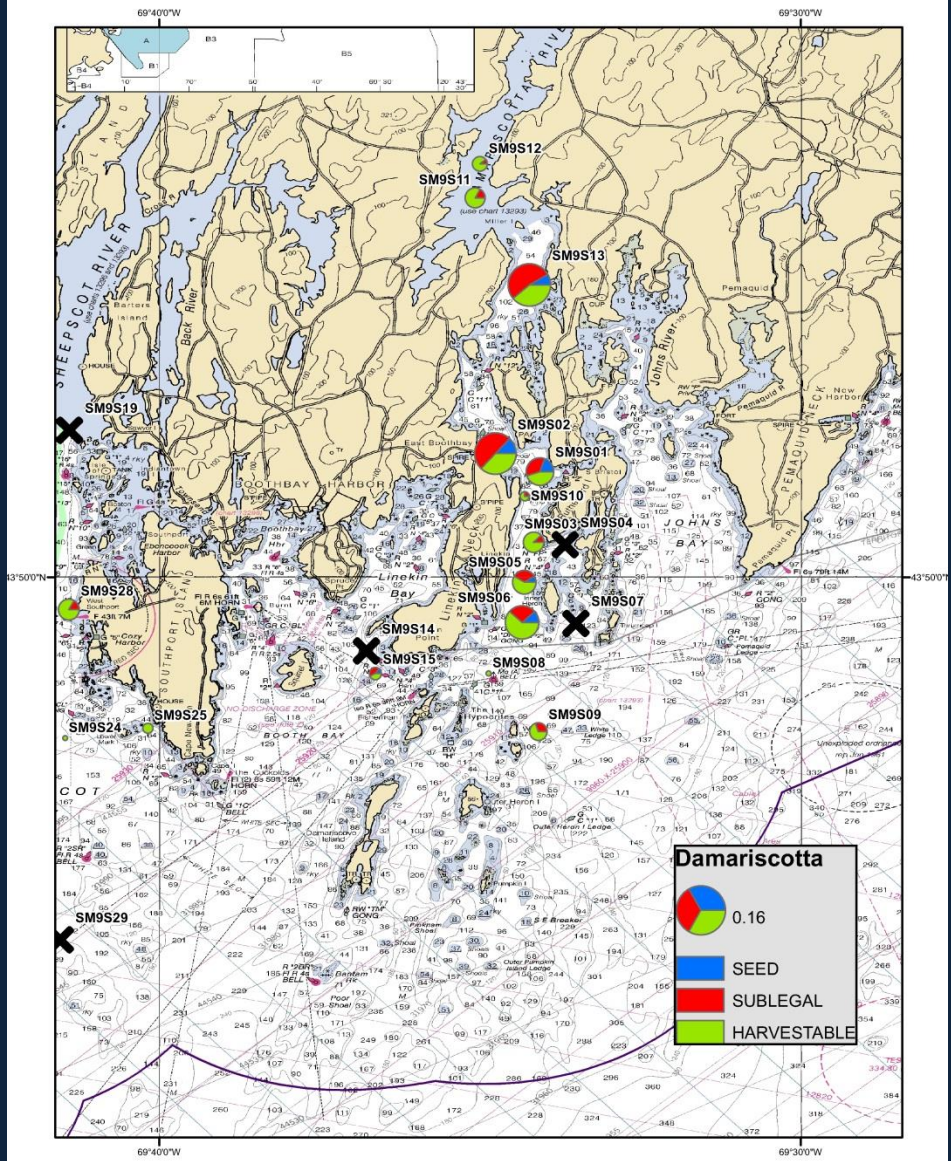


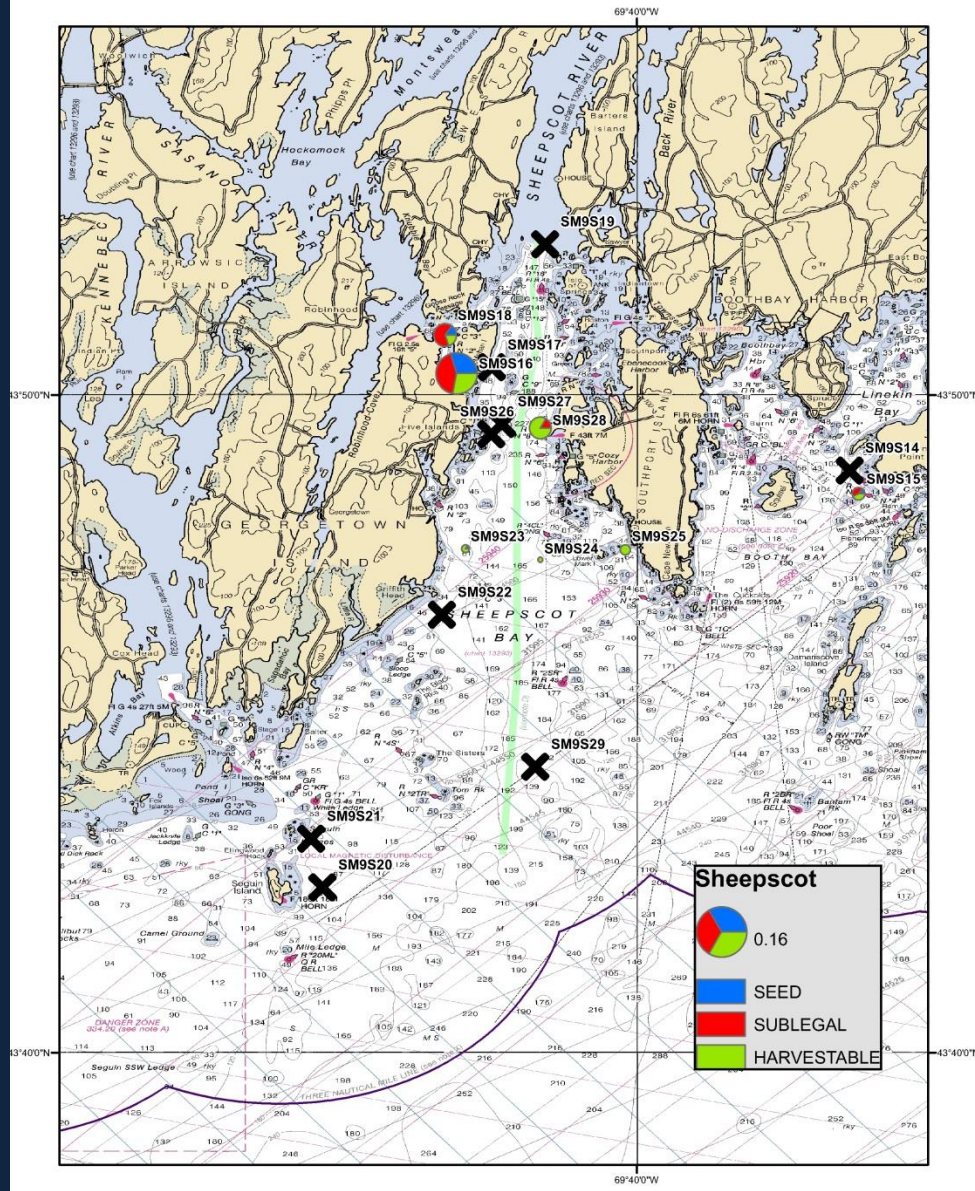
Scallop density by survey station
Muscongus Bay 2015



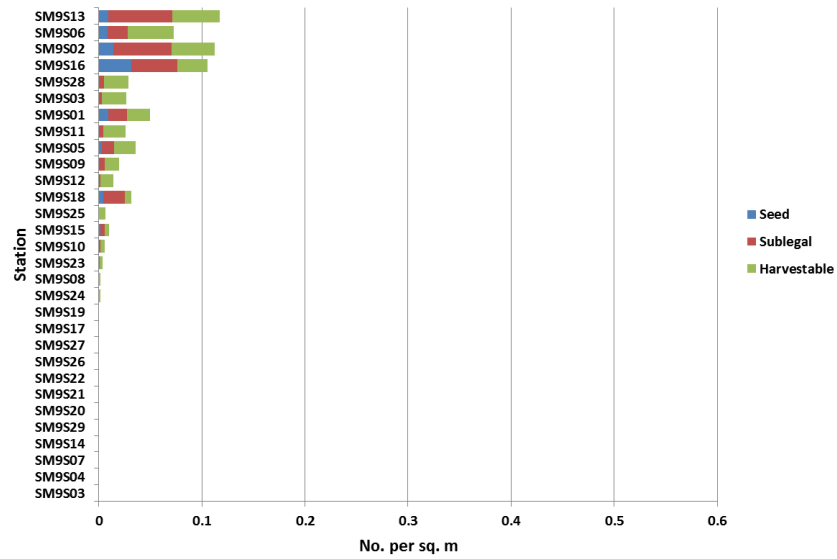
Muscongus scallop size frequencies (n=65)
2015 19 stations







Scallop density by survey station
Damariscotta/Sheepscoot 2015



Damariscotta and Sheepscoot scallop size frequencies (n=444)
2015 30 stations

