

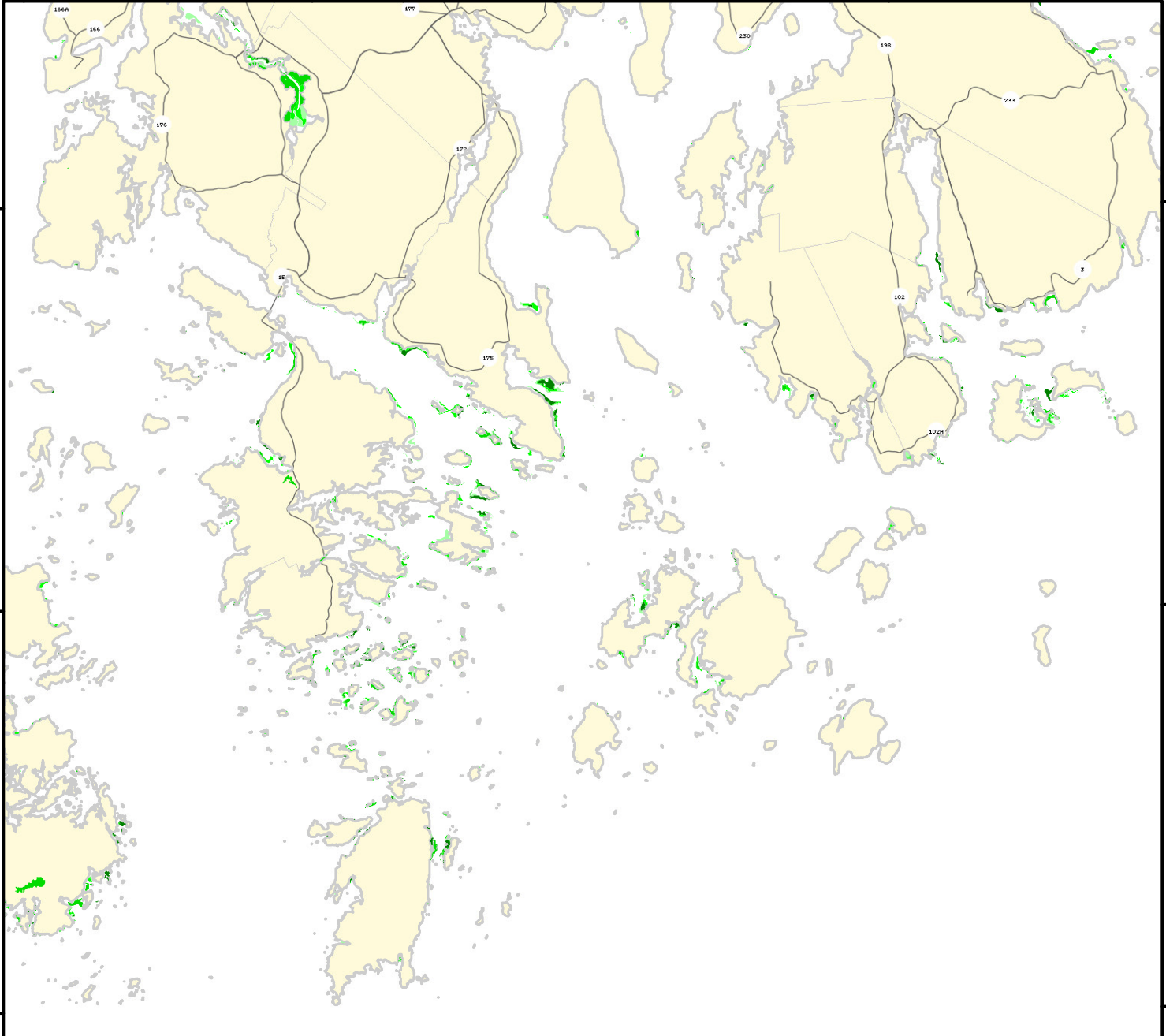
68°50'0"W 68°40'0"W 68°30'0"W 68°20'0"W

44°20'0"N

44°10'0"N

44°0'0"N

68°50'0"W 68°40'0"W 68°30'0"W 68°20'0"W



Maine Coastal Eelgrass Distribution

Eelgrass (*Zostera marina*) is a flowering plant that occurs world-wide and along the east coast of North America from North Carolina to Labrador. Along the Maine coast it is found primarily in shallow, protected intertidal and subtidal locations.

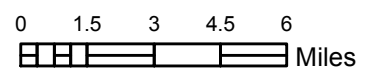
Zostera beds form an important habitat for shellfish, wildlife and other vertebrate and invertebrate species. The distribution in Maine has been mapped since 1992 on approximately 10 year cycles.

These maps are provided as an overview of know locations of eelgrass beds. The original data was developed for use at 1:24000 scale. This information is not intended as site specific information as is often needed for permit review or detailed scientific studies. The current distribution of eelgrass may differ from mapped distribution as photo-aquisition dates range from 2001 to 2010.

Funding has been provided to Maine Dept. of Marine Resources (MeDMR) by the NOAA Coastal Services Center, MeDEP, MeSPO, and the Maine Submerged Lands Program. The production of these maps and the GIS data used to represent eelgrass distribution would not have been possible without the long-term support of the Maine Department of Marine Resources, Bureau of Resource Management.

Eelgrass Per Cent Cover

- GT 0 to 10 %
- GT 10 to 40 %
- GT 40 to 70 %
- GT 70 to 100%



SLB - 5-7-2012

Stonington to Mount Desert Island (Map 7 of 11)

Current GIS data can be obtained from the Maine Office of GIS (MeGIS). For information on maps produced for this project please contact the Maine Department of Marine Resources, (207) 633-9500.