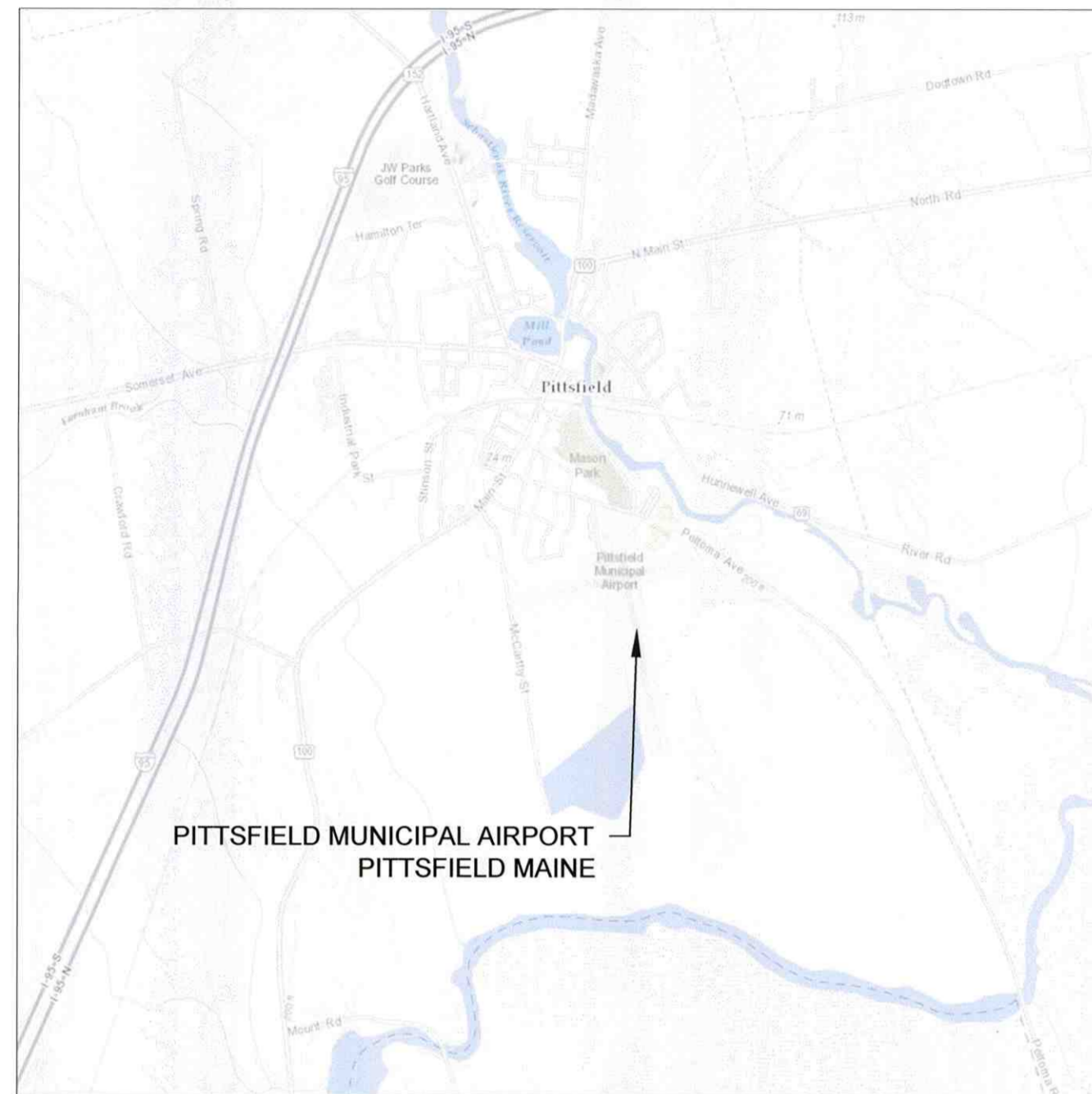
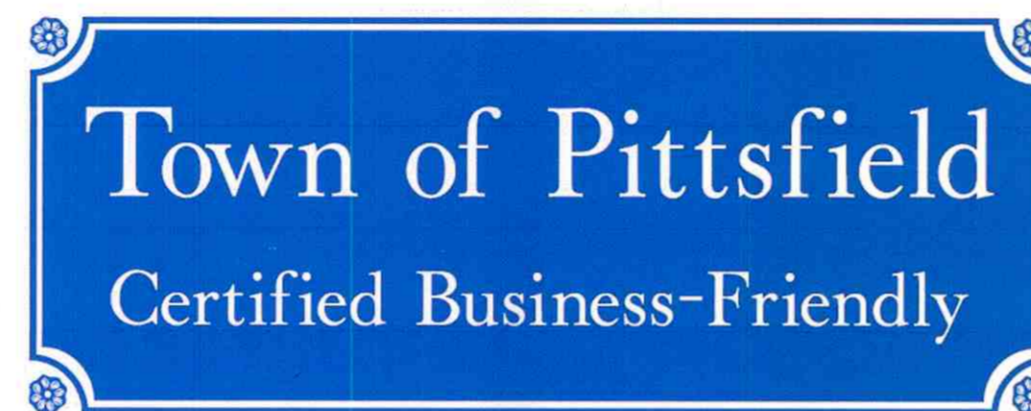


# TOWN OF PITTSFIELD PITTSFIELD MUNICIPAL AIRPORT PITTSFIELD, MAINE

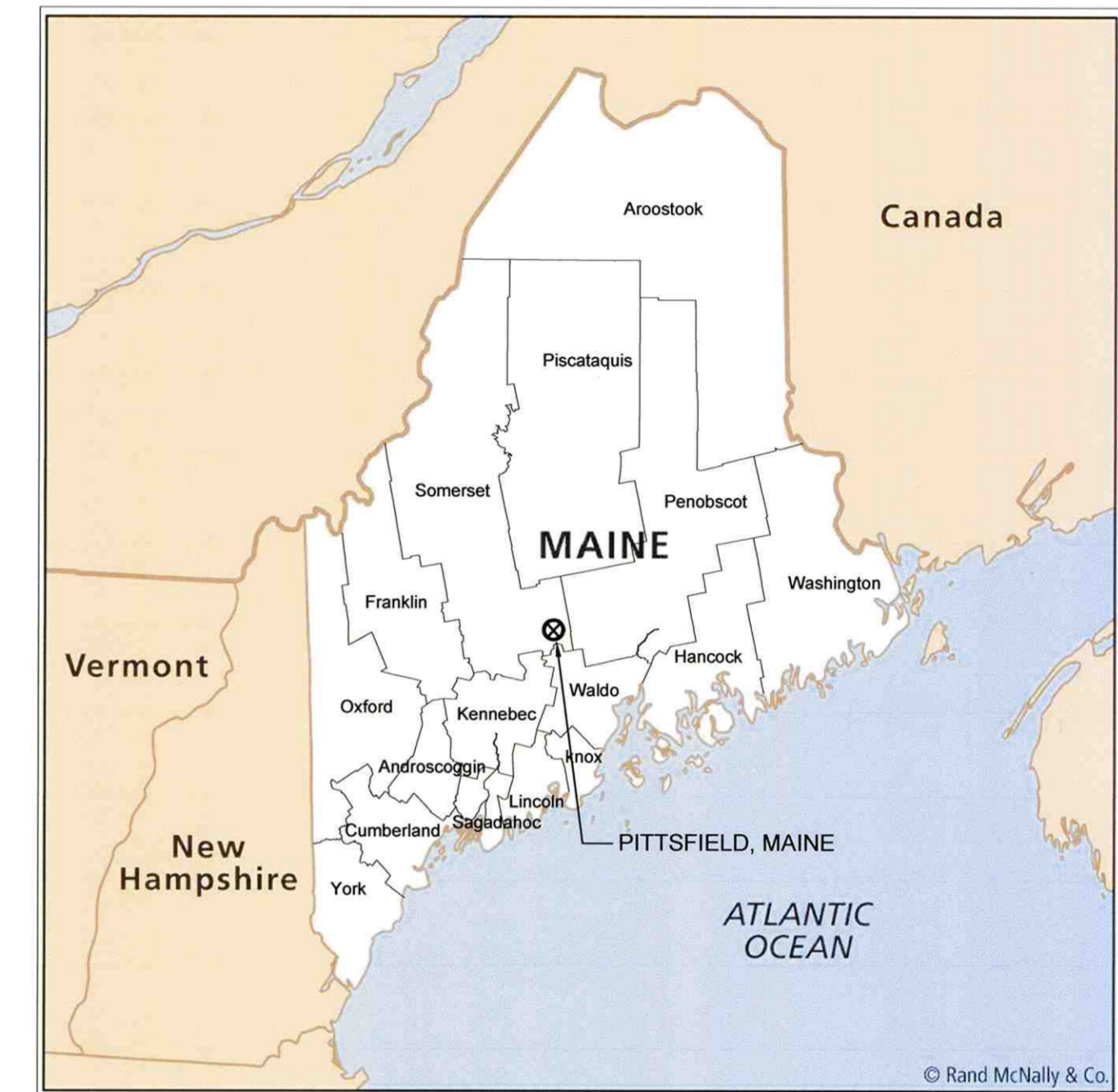


VICINITY MAP



## AIRPORT LAYOUT PLAN DRAWING SET

FAA AIP# 3-23-0036-016-2014  
April 2016



LOCATION MAP

### AIRPORT OWNERSHIP AND MANAGEMENT

The PITTSFIELD MUNICIPAL AIRPORT is owned by the Town of Pittsfield, Maine and operated under the management of the Town of Pittsfield, Town Manager, Kathryn Ruth.

PITTSFIELD MUNICIPAL AIRPORT	TOWN OF PITTSFIELD
Harrison Street	112 Somerset Ave
Pittsfield, ME 04967	Pittsfield, ME 04967

PLANS PREPARED BY:

**Hoyle, Tanner**  
& Associates, Inc.

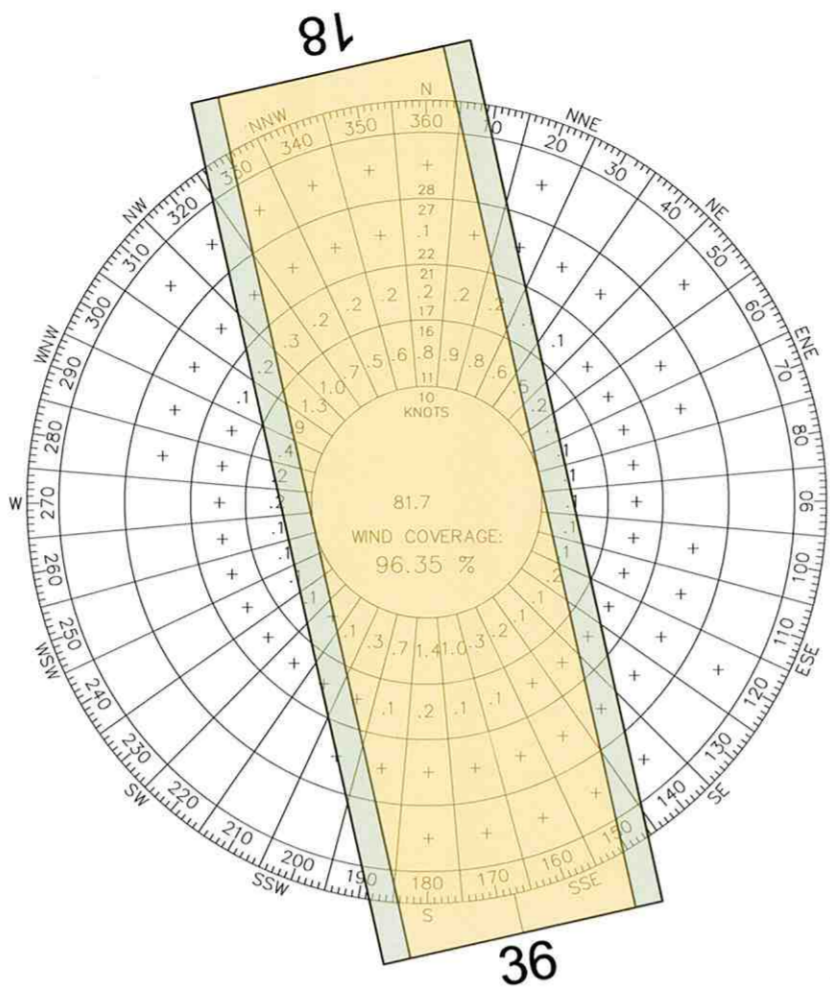
150 Dow Street | Manchester, NH 03101  
Office: (603) 669-5555 | Fax: (603) 669-4168

### INDEX OF SHEETS

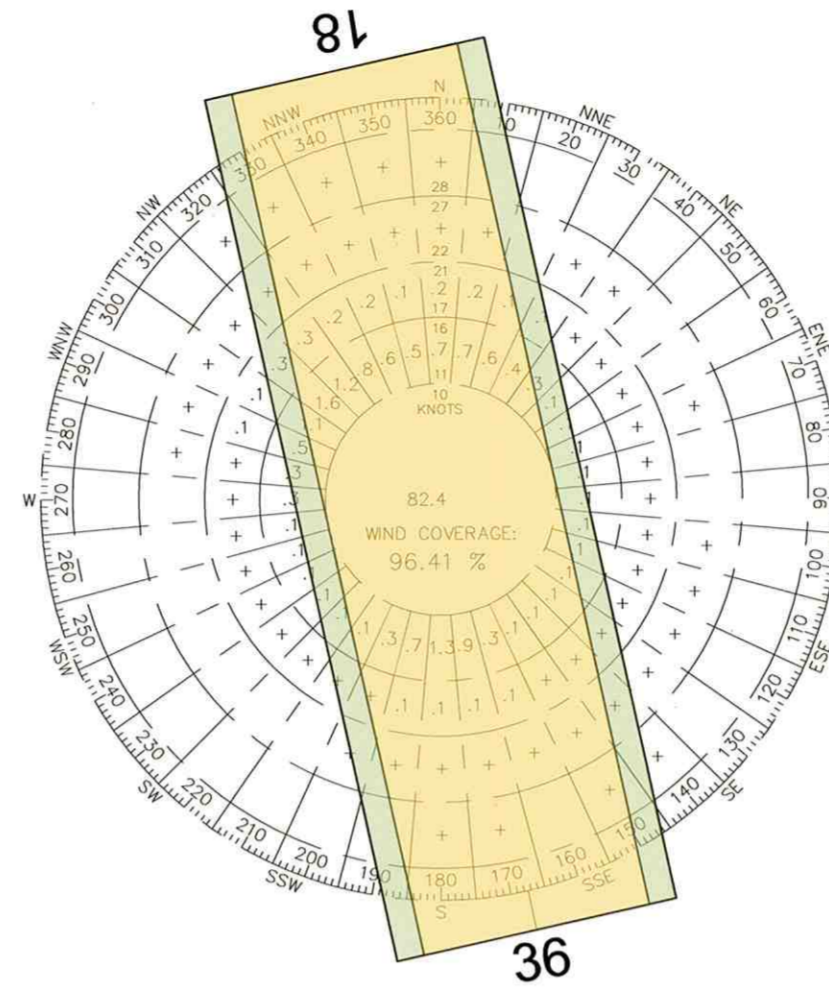
- 1 TITLE SHEET
- 2 DATA SHEET
- 3 EXISTING AIRPORT LAYOUT PLAN
- 4 ULTIMATE AIRPORT LAYOUT PLAN
- 5 TERMINAL AREA PLAN
- 6 AIRPORT AIRSPACE PLAN
- 7 INNER PORTION OF RW 18 APPROACH SURFACE
- 8 INNER PORTION OF RW 36 APPROACH SURFACE
- 9 AIRPORT LAND USE
- 10 AIRPORT PROPERTY MAP

Runway Data			
		Existing and Ultimate	
Runway Identification		Runway 18/36	
Runway Design Code (RDC)		B/II/5000	
Approach Reference Code (APRC)		B/II/5000	
Departure Reference Code (DPRC)		B/II	
Pavement Strength & Material Type		Hot Mix Asphalt	
Pavement Strength (x 1,000 LBS Wheel Loading.)		Single Wheel (SW) 38,000 lbs · Dual Wheel (DW) 49,000 lbs	
Pavement Strength (PCN)		4/F/C/Y/U	
Pavement Strength Surface Treatment		none	
Effective Runway Gradient (%)		0.50%	
Percent (%) Wind Coverage		See Windrose Table	
Runway Dimensions (L x W)		4003 x 100	
		Runway 18	Runway 36
		Existing and Ultimate	Existing Ultimate
Displaced Threshold Elevation		--	
Runway Safety Area Dimensions		4603 x 150	4603 x 150 Same
Runway End Coordinates		Latitude: N 44° 46' 25.98"	N 44° 45' 47.40" Same
		Longitude: W 069° 22' 33.95"	W 069° 22' 21.91" Same
		Elevation: 197.1	176.3 Same
Displaced Threshold Coordinates		Latitude: N/A	N/A Same
		Longitude: N/A	N/A Same
		Elevation: N/A	N/A Same
		Distance: N/A	N/A Same
Runway Lighting Type		MIRL Same	
Runway Protection Zone (RPZ) Dimensions		Approach: 500 x 700 x 1000	500 x 700 x 1000 Same
		Departure: 500 x 700 x 1000	500 x 700 x 1000 Same
Runway Marking Type		Non-Precision Same	
14 CFR Part 77 Approach Category		34:1 Same	
Approach Type		Non-Precision Same	
Visibility Minimums		5000 Same	
Type of Aeronautical Survey Required for Approach		Non-Vertically Guided*	Non-Vertically Guided* Vertically Guided
Runway Departure Surface		Yes Same	
Runway Object Free Area		4603 x 500	4603 x 500 Same
Obstacle Free Zone		4403 x 400	4403 x 400 Same
Approach OCS Penetrations		Approach: 20:1 Tree 5ft Penetration**	20:1 No OCS Penetrations Same
40:1 Departure Surface Penetrations		Departure: 40:1 146 Penetrations***	40:1 56 Penetrations*** Same
Visual and Instrument NAVAIDS		REIL PAP/REIL Same	
Touchdown Zone Elevation		194.0	184.0 Same
Taxiway/Taxilane Width		35	35 Same
Taxiway/Taxilane Safety Area Dimensions		79	79 Same
Taxiway/Taxilane Object Free Area		131/115	131/115 Same
Taxiway/Taxilane Separation		65.5/57.5	65.5/57.5 Same
Taxiway / Taxilane Lighting		MITL/Reflectors MITL/Reflectors Same	
Vertical and Horizontal Datum		Horizontal: NAD 83 / NAVD 88	NAD 83 / NAVD 88 Same
		Vertical: NAD 83	NAD 83 Same
		Vertical: NAVD 88	NAVD 88 Same

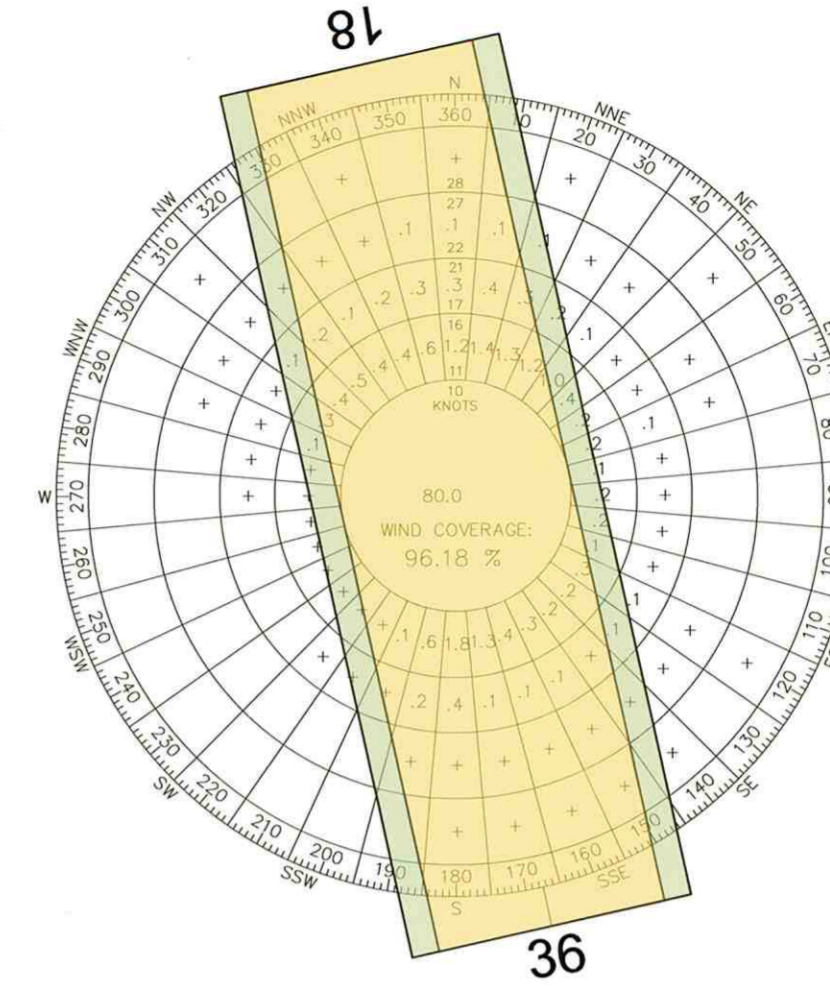
\*The Non-Vertically Guided Survey (NVGS) must be supplemented with the first 10,200 feet of Vertically Guided Approach Surface  
 \*\*Legal agreement to remove tree once abutter is deceased.  
 \*\*\*Special Take-Off Minimums/Departure Procedures apply.



ALL WEATHER



VFR WEATHER



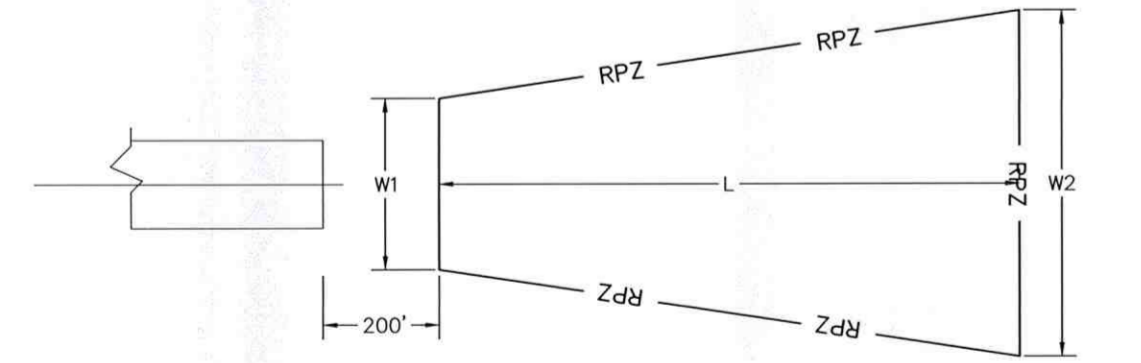
IFR WEATHER

AIRPORT REFERENCE CODE  
ARC B-II

Meteorological Condition	Observations	Runway	Wind Coverage
All-Weather	120,216		10.5 13
Visual Meteorological Conditions (VMC)	89,020	18/36	96.35% 98.52%
Instrument Meteorological Conditions (IMC)	31,196		96.41% 98.55%
			96.18% 98.44%

Source: Downloaded from National Climatic Data Center, Bangor International Airport (728070, 728088), years 2004 to 2014. FAA Airports GIS Program, Airport Design Tools, Standard Wind Analysis  
 Note: year 2014 includes full observations dataset up to October and partial dataset for Nov  
 NOTE: WIND DATA BASED UPON TRUE NORTH

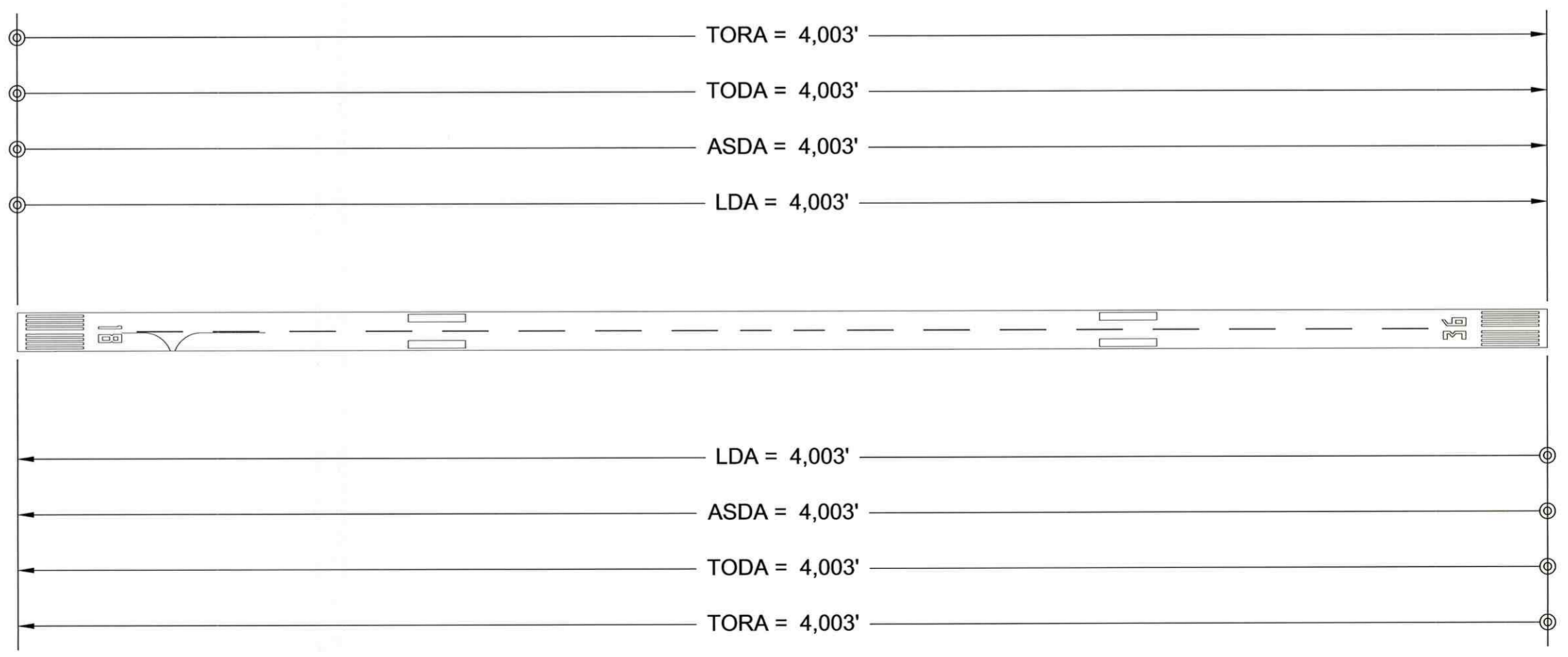
Airport Data Table		
Item	Existing	Future
Airport Reference Code (ARC)	B-II	Same
Mean Max. Temp of Hottest Month	79.9° F/July	Same
Airport Elevation (MSL)	197.1	Same
Airport Electronic NAVAIDS	NDB - owned by Cianchette Bros.	Same
Airport Reference Point (NAD 83)		
Latitude	44° 46' 06.69"	Same
Longitude	69° 22' 27.93"	Same
Miscellaneous Facilities	MITL (partial), Lighted Wind Cone and segmented circle	Same
Critical Aircraft	Beech 300 Super King Air	Same
Wingspan	54.5 ft	Same
Approach Speed	100 knots	Same
Undercarriage	TDG 2	Same
Magnetic Variation - 11/18/2014	16°12' W	6° E per year
NPIAS Service Level	General Aviation	Same
State Service Level / Asset Category	Level 2 / Local	Same



Approach Runway Protection Zone Dimensions						
Runway	Approach Category	Existing			Future	
End		L	W1	W2	L	W1 W2
18	Non-Precision	1000	500	700	1000	500 700
36	NPI 1 mile Vis	1000	500	700	1000	500 700

49 CFR Part 77 Imaginary Approach Surfaces - Existing and Future		
Runway End	Approach Category	Approach Slope
18	Non-precision	34:1
36	Non-precision	34:1

Modification to Standards Approval			
Approval Date	Airspace Case No.	Standard to be Modified	Description
n/a	n/a	None	n/a



DECLARED DISTANCES RUNWAY 18-36

Declared Distances				
Runway	TORA	TODA	ASDA	LDA
18	4,003	4,003	4,003	4,003
36	4,003	4,003	4,003	4,003

3-22-0035-016-2014  
 AIP NO.: 302514  
 PROJ. NO.: JLC  
 DRAWN: MTO  
 DESIGN: MTO  
 CHECKED: ERM  
 DATE: April 2016

BY: \_\_\_\_\_  
 DESCRIPTION: \_\_\_\_\_  
 DATE: \_\_\_\_\_  
 REV. NO.: \_\_\_\_\_

SHEET 2 OF 10

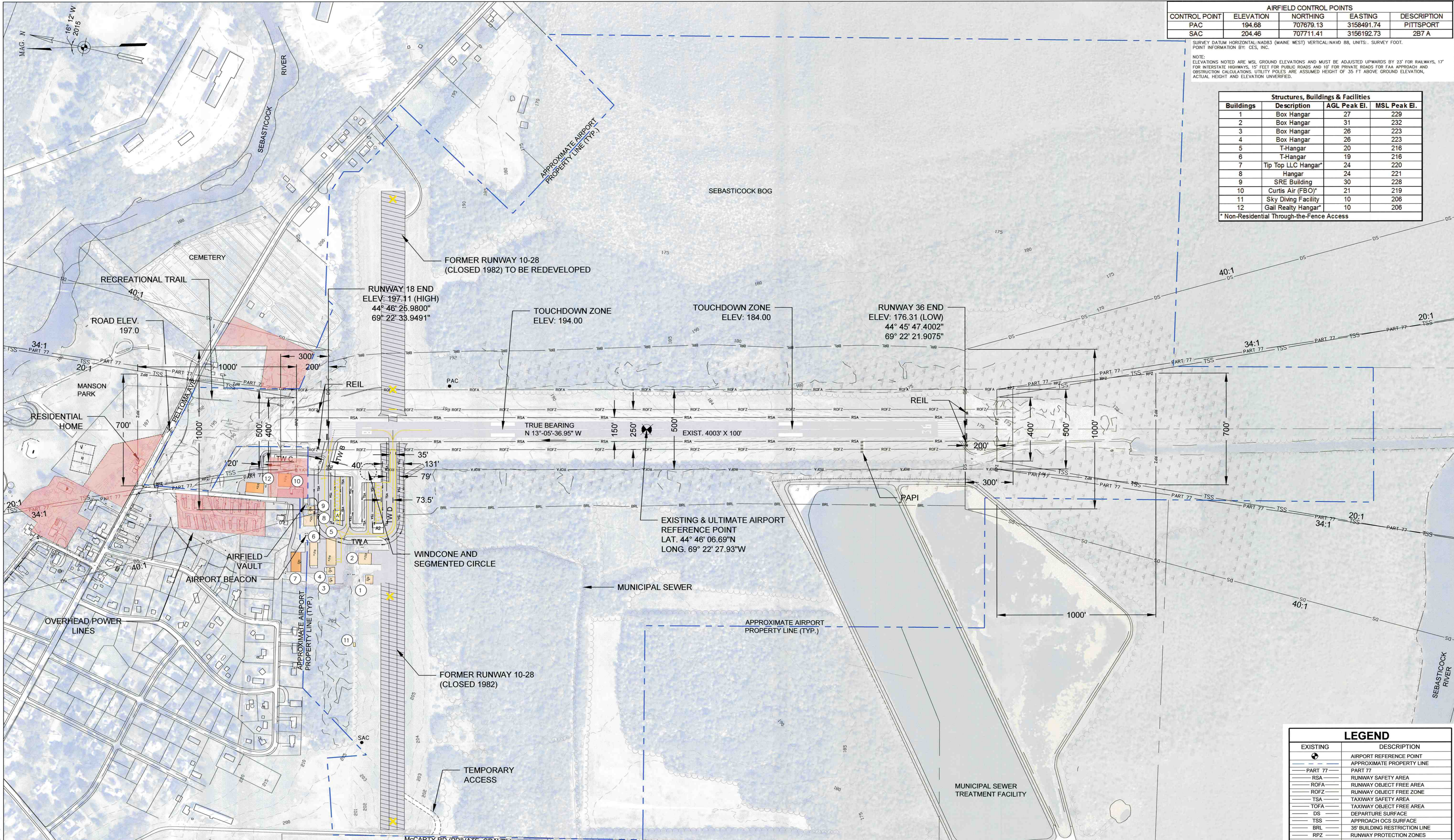
AIRPORT DATA SHEET

TOWN OF PITTSFIELD  
 PITTSFIELD MUNICIPAL AIRPORT  
 PITTSFIELD, MAINE

Town of Pittsfield  
 Certified Business-Friendly

Hoyle, Tanner & Associates, Inc.

150 Dow Street Manchester, NH 03101  
 tel: (603) 669-5555  
 fax: (603) 669-4188  
 www.hoyletanner.com



AIRFIELD CONTROL POINTS				
CONTROL POINT	ELEVATION	NORTHING	EASTING	DESCRIPTION
PAC	194.68	707679.13	3158491.74	PITTSFORT
SAC	204.46	707711.41	3156192.73	2B7 A

NOTE: ELEVATIONS NOTED ARE MSL GROUND ELEVATIONS AND MUST BE ADJUSTED UPWARDS BY 23' FOR RAILWAYS, 17' FOR INTERSTATE HIGHWAYS, 15' FEET FOR PUBLIC ROADS AND 12' FOR PRIVATE ROADS FOR FAA APPROACH AND OBSTRUCTION CALCULATIONS. UTILITY POLES ARE ASSUMED HEIGHT OF 35 FT ABOVE GROUND ELEVATION, ACTUAL HEIGHT AND ELEVATION UNVERIFIED.

Structures, Buildings & Facilities			
Buildings	Description	AGL Peak El.	MSL Peak El.
1	Box Hangar	27	229
2	Box Hangar	31	232
3	Box Hangar	26	223
4	Box Hangar	26	223
5	T-Hangar	20	218
6	T-Hangar	19	218
7	Tip Top LLC Hangar	24	220
8	Hangar	24	221
9	SRE Building	30	228
10	Curtis Air (FBO)	21	219
11	Sky Diving Facility	10	206
12	Gail Realty Hangar	10	206

\* Non-Residential Through-the-Fence Access

BY	DESCRIPTION	REV. NO.	DATE

SHEET TITLE  
**EXISTING AIRPORT LAYOUT PLAN**

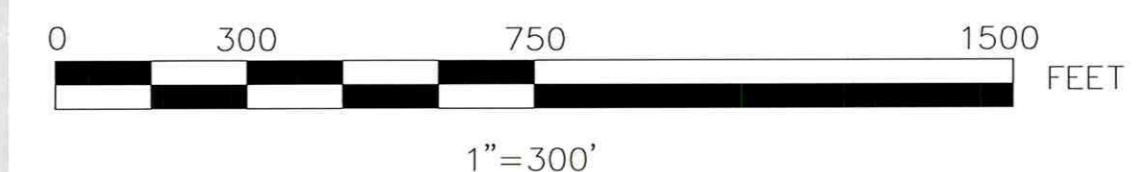
TOWN OF PITTSFIELD  
 PITTSFIELD MUNICIPAL AIRPORT  
 PITTSFIELD, MAINE

**Hoyle, Tanner & Associates, Inc.**  
 150 Dow Street Manchester, NH 03101  
 tel: (603) 669-5555  
 fax: (603) 669-4168  
 www.hoyletanner.com

Airport Data Table		
Item	Existing	Future
Airport Reference Code (ARC)	B-II	Same
Mean Max Temp of Hottest Month	79.9°F/July	Same
Airport Elevation (MSL)	197.1	Same
Airport Electronic NAV AIDS	NDB - owned by Cianchette Bros.	Same
Airport Reference Point (NAD 83)		
Latitude	44° 46' 06.69"	Same
Longitude	69° 22' 27.93"	Same
Miscellaneous Facilities	MITL (partial), Lighted Wind Cone and segmented circle	Same
Critical Aircraft	Beech 300 Super King Air	Same
Wingspan	54.5 ft	Same
Approach Speed	100 knots	Same
Undercarriage	TDG 2	Same
Magnetic Variation - 11/18/2014	16°12' W	6° E per year
NPIAS Service Level	General Aviation	Same
State Service Level / Asset Category	Level 2 / Local	Same

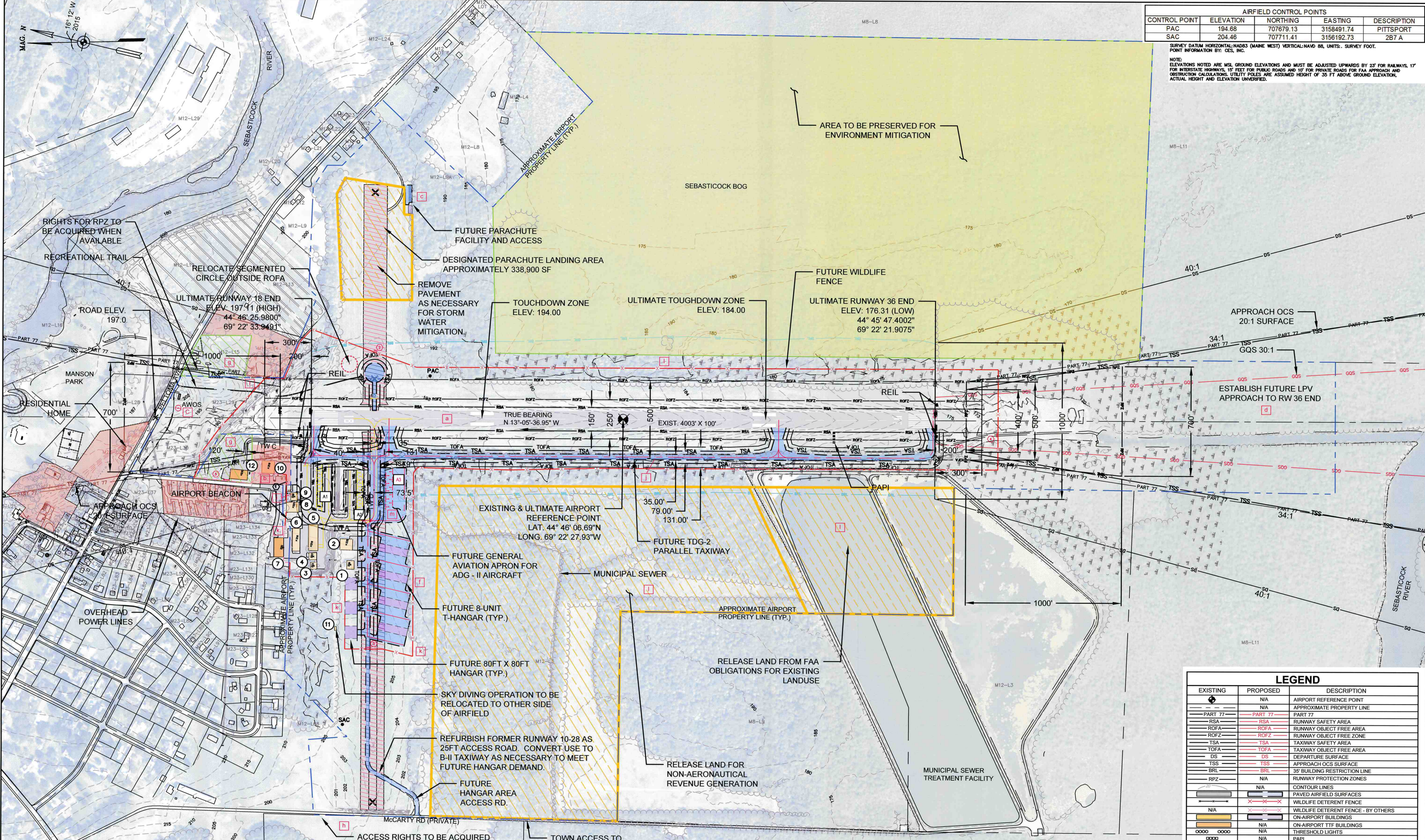
Existing Pavement Dimensions			
Runway	Length	Width	Ft Sq
18/36	4003	100	400,300
Taxiway	Length	Width	Ft Sq
A	460	35	16,100
B	300	42	12,600
C	480	20	9,600
D	600	35	21,000
Aprons	Length	Width	Ft Sq
A1 - Terminal Apron	342	188	64,296
A2 - GA Apron	306	142	43,452
Proposed Pavement Dimensions			
Aprons	Length	Width	Ft Sq
A3 - Terminal Apron	350	234	81,900

LEGEND	
EXISTING	DESCRIPTION
(Symbol)	AIRPORT REFERENCE POINT
(Symbol)	APPROXIMATE PROPERTY LINE
(Symbol)	PART 77
(Symbol)	RSA
(Symbol)	ROFA
(Symbol)	ROFZ
(Symbol)	TSA
(Symbol)	TOFA
(Symbol)	DS
(Symbol)	TSS
(Symbol)	BRL
(Symbol)	RPZ
(Symbol)	PAVEMENT ABANDONED
(Symbol)	CONTOUR LINES
(Symbol)	PAVED AIRFIELD SURFACES
(Symbol)	FENCE (HEIGHT VARIES)
(Symbol)	ON-AIRPORT BUILDINGS
(Symbol)	OFF-AIRPORT TIF HANGAR
(Symbol)	THRESHOLD LIGHTS
(Symbol)	4-LIGHT PAPI
(Symbol)	RUNWAY END IDENTIFIER LIGHT (REIL)
(Symbol)	BUILDING IDENTIFICATION
(Symbol)	EASEMENT
(Symbol)	RUNWAY IDENTIFIER
(Symbol)	WETLANDS
(Symbol)	APPROACH OBSTRUCTION LIGHT
(Symbol)	GATE IDENTIFICATION
(Symbol)	TAXI MAP LIGHT
(Symbol)	APRON IDENTIFICATION



Drawing name: H:\302514 Pittsfield AMP\Job\Contract3 Existing AUP.dwg Apr 27, 2016 - 7:58am

DO NOT SCALE DRAWING



AIRFIELD CONTROL POINTS			
CONTROL POINT	ELEVATION	NORTHING	EASTING
PAC	194.68	707679.13	3156491.74
SAC	204.46	707711.41	3156192.73

NOTE:  
ELEVATIONS NOTED ARE MSL GROUND ELEVATIONS AND MUST BE ADJUSTED UPWARDS BY 2' FOR RAILWAYS, 17' FOR INTERSTATE HIGHWAYS, 15' FEET FOR PUBLIC ROADS AND 10' FOR PRIVATE ROADS FOR FAA APPROACH AND OBSTRUCTION CALCULATIONS. UTILITY POLES ARE ASSUMED HEIGHT OF 35 FT ABOVE GROUND ELEVATION. ACTUAL HEIGHT AND ELEVATION UNVERIFIED.

BY	DESCRIPTION	REV. NO.	DATE

AIP NO.:	3-23-0036-016-2014
PROJ. NO.:	302514
DRAWN:	JLC
DESIGN:	MTO
CHECKED:	ERM
DATE:	April 2016

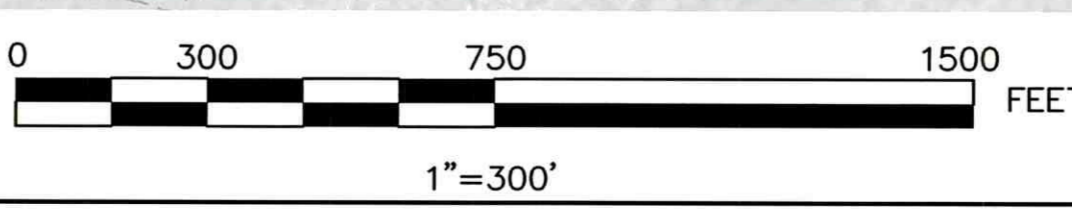
ULTIMATE AIRPORT LAYOUT PLAN

TOWN OF PITTSFIELD  
PITTSFIELD MUNICIPAL AIRPORT  
PITTSFIELD, MAINE

**Hoyle Tanner Associates, Inc.**  
150 Dow Street Manchester, NH 03101  
Tel: (603) 668-6555  
Fax: (603) 669-4168  
www.hoyletanner.com

EXISTING	PROPOSED	DESCRIPTION
⊙	N/A	AIRPORT REFERENCE POINT
---	N/A	APPROXIMATE PROPERTY LINE
---	PART 77	PART 77
---	RSA	RUNWAY SAFETY AREA
---	ROFA	RUNWAY OBJECT FREE AREA
---	ROFZ	RUNWAY OBJECT FREE ZONE
---	TSA	TAXIWAY SAFETY AREA
---	TOFA	TAXIWAY OBJECT FREE AREA
---	DS	DEPARTURE SURFACE
---	TSS	APPROACH OCS SURFACE
---	BRL	35' BUILDING RESTRICTION LINE
---	RPZ	RUNWAY PROTECTION ZONES
---	N/A	CONTOUR LINES
---	N/A	PAVED AIRFIELD SURFACES
---	N/A	WILDLIFE DETERRENT FENCE
---	N/A	WILDLIFE DETERRENT FENCE - BY OTHERS
---	N/A	ON-AIRPORT BUILDINGS
---	N/A	THRESHOLD LIGHTS
---	N/A	PAPI
---	N/A	RUNWAY END IDENTIFIER LIGHT (REIL)
---	N/A	WIND SOCK
---	N/A	BUILDING IDENTIFICATION
---	N/A	EASEMENT
---	N/A	RUNWAY IDENTIFIER
---	N/A	WETLANDS
---	N/A	APPROACH/OBSTRUCTION LIGHT
---	N/A	GATE IDENTIFICATION
---	N/A	PAVEMENT TO BE REMOVED
---	N/A	GATE LOCATION
---	N/A	APRON IDENTIFICATION
---	N/A	PROPOSED DEVELOPMENT
---	N/A	FUTURE LAND RELEASE
M12-2	N/A	TAX MAPS - LOTS
N/A	N/A	AWOS A-V

49 CFR Part 77 Imaginary Approach Surfaces - Existing and Future		
Runway End	Approach Category	Approach Slope
18	Non-precision	34:1
36	Non-precision	34:1



Legend	Timeframe	Proposed Development
a	0-5	Runway Maintenance and Markings
b	0-5	Unicom Frequency Change
c	0-5	AWOS A-V Weather Station Installation
d	0-5	LPV Aeronautical Survey
e	0-5	Skydiving Operations and Access*
f	5-10	Hangar Development
g	5-10	Easement Acquisitions
h	10-20	McCarty Rd - Alternate Airport Access
i	10-20	Replace SRE Equipment
j	10-20	NEPA, Permit, Design, Construct Parallel Taxiway
k	10-20	Install Wildlife Fence
l	10-20	Land Release
m	10-20	Expand Tiedown Apron

Structures, Buildings & Facilities			
Buildings	Description	AGL Peak El.	MSL Peak El.
1	Box Hangar	27	229
2	Box Hangar	31	232
3	Box Hangar	26	223
4	Box Hangar	26	223
5	T-Hangar	20	216
6	T-Hangar	19	216
7	Tip Top LLC Hangar*	24	220
8	Hangar	24	221
9	SRE Building	30	228
10	Curtis Air (FBO)*	21	219
11	Sky Diving Facility	10	206
12	Gail Realty Hangar*	10	206

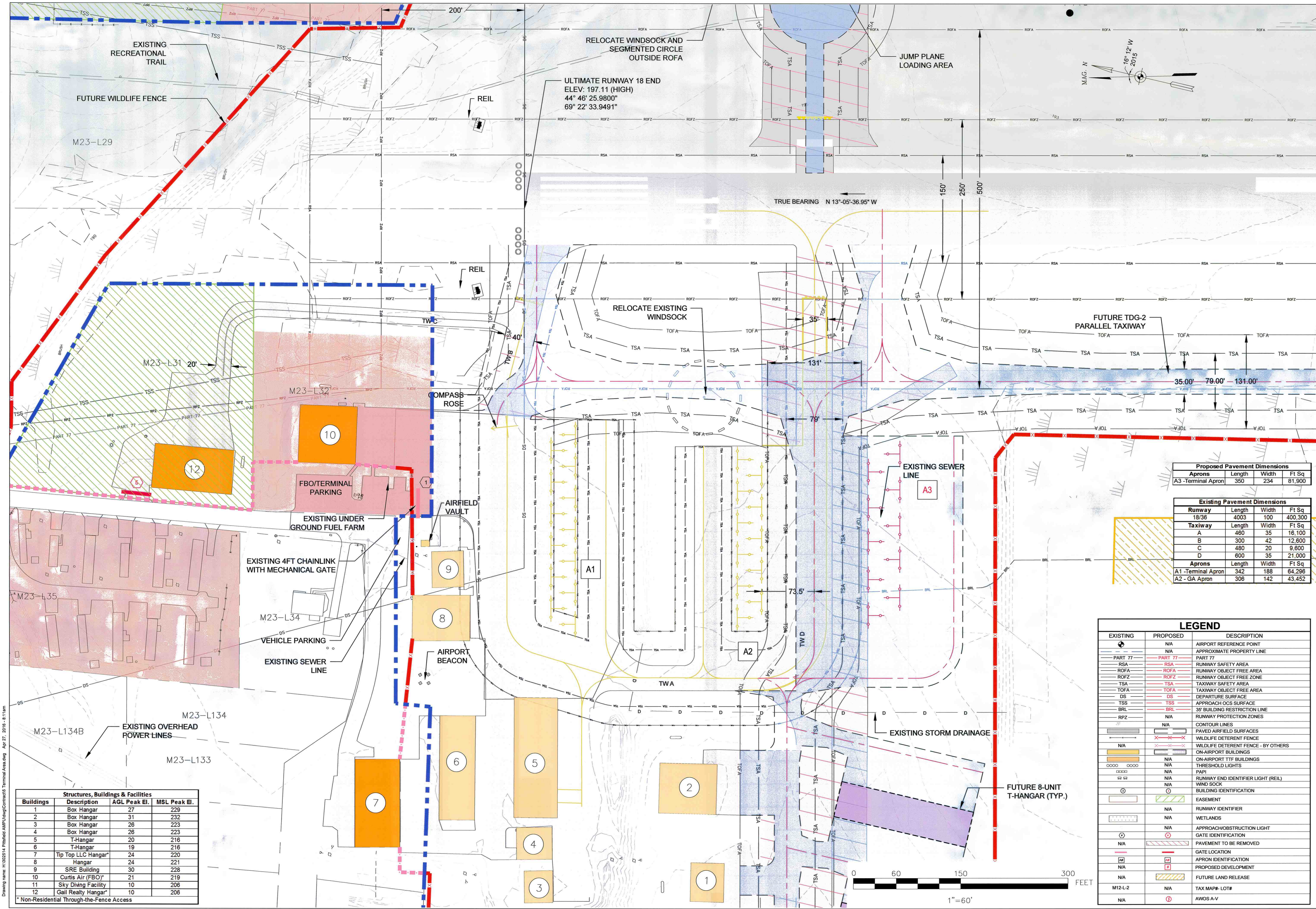
\* Non-Residential Through-the-Fence Access

**Airport Sponsor Approval**  
This Airport Layout Plan is hereby Approved  
Signature: *Fallon King* Date: *08/22/2017*  
Name: *Fallon King*  
Title: *Town Manager*

**MaineDOT Approval**  
This Airport Layout Plan is hereby Approved  
Signature: *Herb Thomson* Date: *26 August 2017*  
Name: *Herb Thomson*  
Title: *Director of Planning*

**FAA Approval**  
This Airport Layout Plan is hereby Conditionally Approved  
Signature: *Michelle Koci* Date: *9/27/17*  
Name: *Michelle Koci*  
Title:

Drawing name: 1320254\_Pitfield\_Airport\_Contract\_4\_Ultimate\_ALP.dwg Apr 27, 2016, 7:48am



Drawing name: H:\302514 Pittsfield Airport\Drawings\Terminal Area.dwg Apr 27, 2016 - 8:11am

Structures, Buildings & Facilities			
Buildings	Description	AGL Peak El.	MSL Peak El.
1	Box Hangar	27	229
2	Box Hangar	31	232
3	Box Hangar	26	223
4	Box Hangar	26	223
5	T-Hangar	20	216
6	T-Hangar	19	216
7	Tip Top LLC Hangar	24	220
8	Hangar	24	221
9	SRE Building	30	228
10	Curtis Air (FBO)	21	219
11	Sky Diving Facility	10	206
12	Gail Realty Hangar	10	206

\* Non-Residential Through-the-Fence Access

Proposed Pavement Dimensions			
Aprons	Length	Width	Ft Sq
A3 - Terminal Apron	350	234	81,900

Existing Pavement Dimensions			
Runway	Length	Width	Ft Sq
18/36	4003	100	400,300
Taxiway	Length	Width	Ft Sq
A	400	35	16,100
B	300	42	12,600
C	400	20	9,800
D	600	35	21,000
Aprons	Length	Width	Ft Sq
A1 - Terminal Apron	342	188	64,296
A2 - GA Apron	306	142	43,452

EXISTING	PROPOSED	DESCRIPTION
	N/A	AIRPORT REFERENCE POINT
	N/A	APPROXIMATE PROPERTY LINE
	PART 77	PART 77
	RSA	RUNWAY SAFETY AREA
	ROFA	RUNWAY OBJECT FREE AREA
	ROFZ	RUNWAY OBJECT FREE ZONE
	TSA	TAXIWAY SAFETY AREA
	TOFA	TAXIWAY OBJECT FREE AREA
	DS	DEPARTURE SURFACE
	TSS	APPROACH CCS SURFACE
	BRL	35' BUILDING RESTRICTION LINE
	RPZ	RUNWAY PROTECTION ZONES
	N/A	CONTOUR LINES
	N/A	PAVED AIRFIELD SURFACES
	N/A	WILDLIFE DETERRENT FENCE
	N/A	WILDLIFE DETERRENT FENCE - BY OTHERS
	N/A	ON-AIRPORT BUILDINGS
	N/A	ON-AIRPORT TTF BUILDINGS
	N/A	THRESHOLD LIGHTS
	N/A	PAPI
	N/A	RUNWAY END IDENTIFIER LIGHT (REIL)
	N/A	WIND SOCK
	N/A	BUILDING IDENTIFICATION
	N/A	EASEMENT
	N/A	RUNWAY IDENTIFIER
	N/A	WETLANDS
	N/A	APPROACH OBSTRUCTION LIGHT
	N/A	GATE IDENTIFICATION
	N/A	PAVEMENT TO BE REMOVED
	N/A	GATE LOCATION
	N/A	APRON IDENTIFICATION
	N/A	PROPOSED DEVELOPMENT
	N/A	FUTURE LAND RELEASE
	M12-L-2	TAX MAP# - LOT#
	N/A	AWOS A-V

**TERMINAL AREA PLAN**

TOWN OF PITTSFIELD  
PITTSFIELD MUNICIPAL AIRPORT  
PITTSFIELD, MAINE

**Hoyle, Tanner Associates, Inc.**

150 Dow Street Manchester, NH 03101  
Tel: (603) 669-5555  
Fax: (603) 669-4168  
www.hoyletanner.com

Town of Pittsfield  
Certified Business Friendly

REV. NO.	DATE	DESCRIPTION

BY: AIP NO.: 9-23-0086-016-2014  
 PROJ. NO.: 302514  
 DRAWN: JLC  
 DESIGN: MTO  
 CHECKED: ERM  
 DATE: APRIL 2016

SHEET 5 OF 10  
DO NOT SCALE DRAWING

FEDERAL AVIATION REGULATIONS PART 77, STATES THAT A STRUCTURE IS PRESUMED TO HAVE A SUBSTANTIAL ADVERSE EFFECT UPON THE SAFE AND EFFICIENT USE OF NAVIGABLE AIRSPACE IF ITS HEIGHT EXCEEDS THE FOLLOWING STANDARDS:

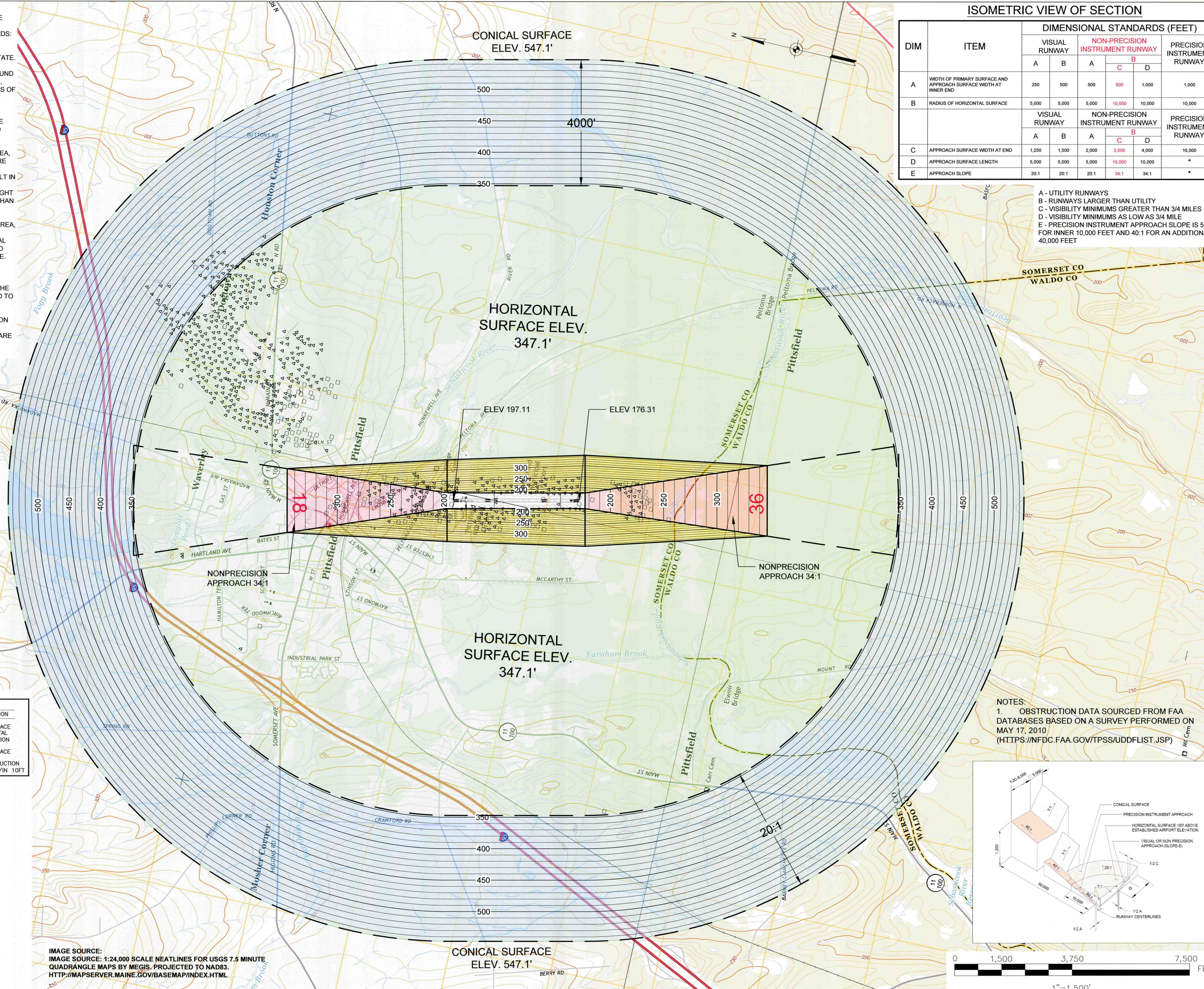
1. A HEIGHT OF FIVE HUNDRED (500) FEET ABOVE GROUND LEVEL AT THE SITE OF THE OBJECT ANYWHERE IN THE STATE.
2. A HEIGHT THAT IS TWO HUNDRED (200) FEET ABOVE GROUND LEVEL OR ABOVE THE ESTABLISHED AIRPORT ELEVATION, WHICHEVER IS HIGHER, WITHIN THREE (3) NAUTICAL MILES OF THE ESTABLISHED REFERENCED POINT OF A PUBLIC-USE AIRPORT, EXCLUDING HELIPORTS, AND THE HEIGHT INCREASES IN THE PROPORTION OF ONE HUNDRED (100) FEET FOR EACH ADDITIONAL NAUTICAL MILE OF DISTANCE FROM THE AIRPORT UP TO A MAXIMUM OF FIVE HUNDRED (500) FEET.
3. A HEIGHT WITHIN A TERMINAL OBSTACLE CLEARANCE AREA, INCLUDING AN INITIAL APPROACH SEGMENT, A DEPARTURE AREA, AND A CIRCLING APPROACH AREA, AS DEFINED BY FEDERAL LAWS AND REGULATIONS, WHICH WOULD RESULT IN THE VERTICAL DISTANCE BETWEEN ANY POINT ON THE OBJECT AND AN ESTABLISHED MINIMUM INSTRUMENT FLIGHT ALTITUDE WITHIN THAT AREA OR SEGMENT TO BE LESS THAN THE REQUIRED OBSTACLE CLEARANCE.
4. A HEIGHT WITHIN AN EN ROUTE OBSTACLE CLEARANCE AREA, AS DEFINED BY FEDERAL LAWS AND REGULATIONS, INCLUDING TURN AND TERMINATION AREAS, OF A FEDERAL AIRWAY OR APPROVED OFF-AIRWAY ROUTE, THAT WOULD INCREASE THE MINIMUM OBSTACLE CLEARANCE ALTITUDE.
5. THE SURFACE OF A TAKEOFF AND LANDING AREA OF A PUBLIC-USE AIRPORT OR ANY IMAGINARY SURFACE AS ESTABLISHED BY FAR PART 77. HOWEVER, NO PART OF THE TAKEOFF OR LANDING AREA ITSELF WILL BE CONSIDERED TO BE AN OBSTRUCTION.

NOTE: FAR PART 77 IMAGINARY SURFACES ARE AS SHOWN ON THIS SHEET FOR TOWN OF PITTSFIELD, MAINE: PITTSFIELD MUNICIPAL AIRPORT. THESE SURFACES ARE DEPICTED BASED UPON EXISTING AND ULTIMATE AIRPORT DEVELOPMENT.

LEGEND			
SYMBOL	DESCRIPTION	SYMBOL	DESCRIPTION
	CONICAL SURFACE		APPROACH SURFACE ABOVE HORIZONTAL SURFACE ELEVATION
	HORIZONTAL SURFACE		APPROACH SURFACE
	SURFACE ELEVATION CONTOUR		CURRENT OBSTRUCTION
	FAR PART 77 SURFACE PENETRATIONS		OBSTRUCTION W/IN 10FT

Pittsfield Municipal Airport Part 77 Airspace Surface		
Airport Data	Runway 18	Runway 36
Classification	Non-precision	Non-precision
Approach	Non-precision	Non-precision
Visibility Minimums	1-mile	1-mile
Airport Elevation	197	
Horizontal Surface		
Horizontal Surface Elevation	347	
Horizontal Surface Radius	10,000	
Conical Surface		
Horizontal Distance	4,000	4,000
Slope	20:01	20:01
Primary Surface		
Length beyond Runway End	200	200
Width	500	500
Approach Surface		
Horizontal Distance	10,000	10,000
Inner Edge Width	500	500
Outer Edge Width	3,500	3,500
Slope	34:1	34:1
Transitional Surfaces		
Slope	7:1	7:1

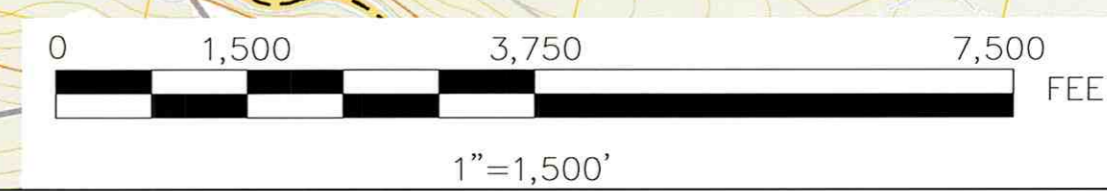
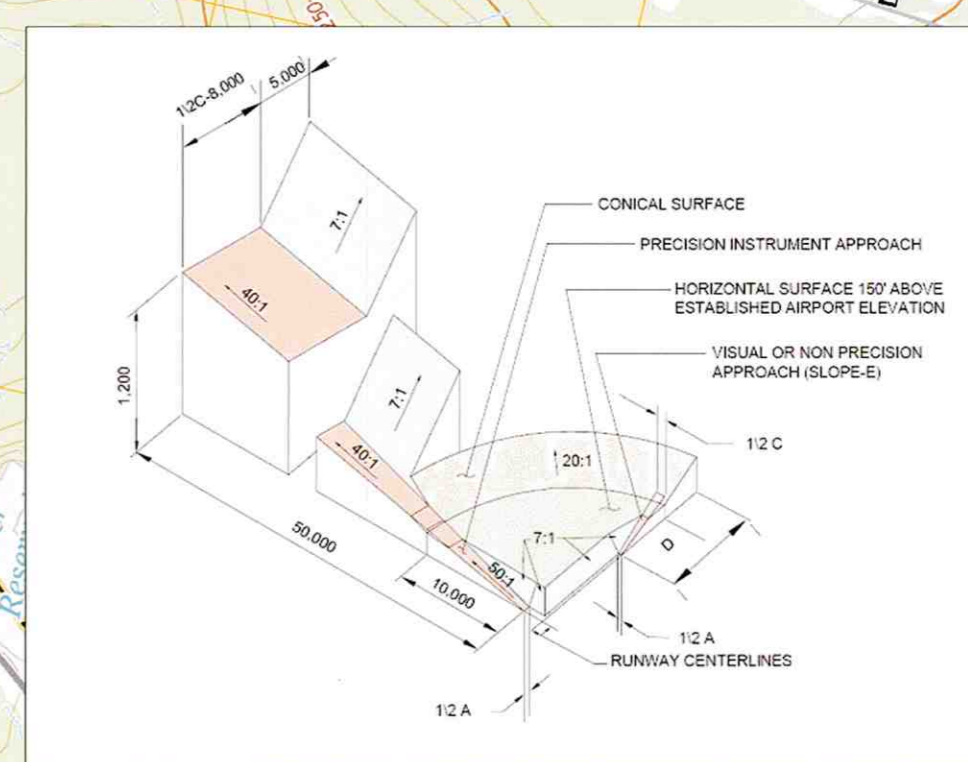
IMAGE SOURCE: 1:24,000 SCALE NEATLINES FOR USGS 7.5 MINUTE QUADRANGLE MAPS BY MEGIS. PROJECTED TO NAD83. [HTTP://MAPSERVER.MAINE.GOV/BASEMAP/INDEX.HTML](http://MAPSERVER.MAINE.GOV/BASEMAP/INDEX.HTML)  
Source: CFR Oart 77, Objects Affecting Navigable Airspace  
Notes: Dimension are in feet unless otherwise noted.



DIM	ITEM	DIMENSIONAL STANDARDS (FEET)					
		VISUAL RUNWAY		NON-PRECISION INSTRUMENT RUNWAY			PRECISION INSTRUMENT RUNWAY
		A	B	A	C	D	
A	WIDTH OF PRIMARY SURFACE AND APPROACH SURFACE WIDTH AT INNER END	250	500	500	500	1,000	1,000
B	RADIUS OF HORIZONTAL SURFACE	5,000	5,000	5,000	10,000	10,000	10,000
C	APPROACH SURFACE WIDTH AT END	1,250	1,500	2,000	3,500	4,000	16,000
D	APPROACH SURFACE LENGTH	5,000	5,000	5,000	10,000	10,000	*
E	APPROACH SLOPE	20:1	20:1	20:1	34:1	34:1	*

- A - UTILITY RUNWAYS
- B - RUNWAYS LARGER THAN UTILITY
- C - VISIBILITY MINIMUMS GREATER THAN 3/4 MILES
- D - VISIBILITY MINIMUMS AS LOW AS 3/4 MILE
- E - PRECISION INSTRUMENT APPROACH SLOPE IS 50:1 FOR INNER 10,000 FEET AND 40:1 FOR AN ADDITIONAL 40,000 FEET

NOTES:  
1. OBSTRUCTION DATA SOURCED FROM FAA DATABASES BASED ON A SURVEY PERFORMED ON MAY 17, 2010 ([HTTPS://NFDC.FAA.GOV/TPSS/UDDFLIST.JSP](https://NFDC.FAA.GOV/TPSS/UDDFLIST.JSP))



REV. NO.	DATE	DESCRIPTION

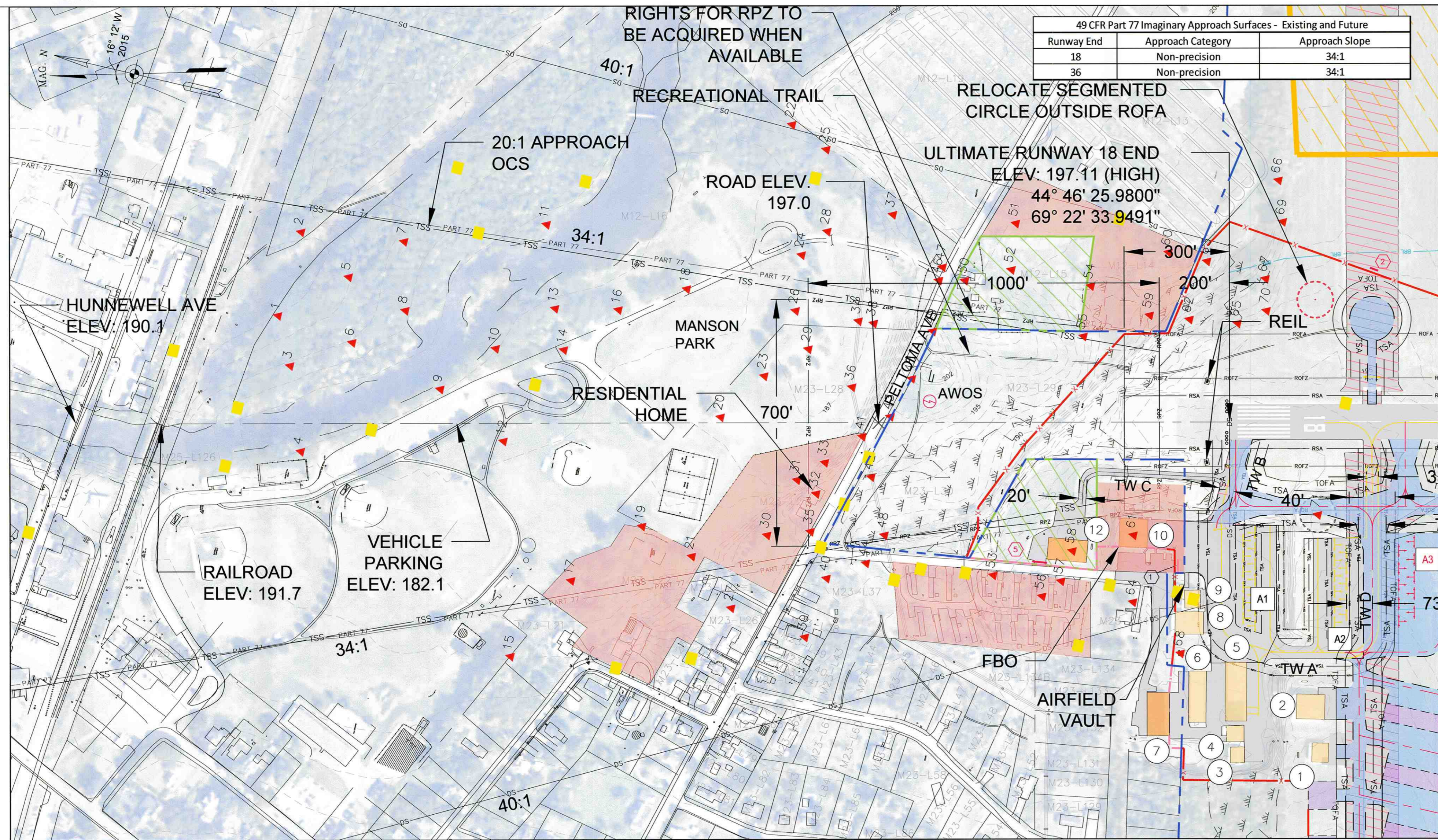
BY: [Signature]  
 PROJECT NO.: 302514  
 DRAWN: JLC  
 DESIGN: MTO  
 CHECKED: ERM  
 DATE: April 2016  
 SHEET 6 OF 10

TOWN OF PITTSFIELD  
 PITTSFIELD MUNICIPAL AIRPORT  
 PITTSFIELD, MAINE  
 AIRPORT AIRSPACE PLAN

**Hoyle, Tanner & Associates, Inc.**  
 150 Dow Street Manchester, NH 03101  
 tel: (603) 669-5555  
 fax: (603) 669-4168  
 www.hoyletanner.com

Drawing name: H:\302514 Pittsfield AMP\Drawings\Airport Airspace.dwg Apr 27, 2016 - 8:18am

Drawing name: H:\302514\Pittsfield AMP\Drawings\Contract7\Inner Approach RW18.dwg Apr 27, 2016 8:23am



OBSTRUCTIONS ARE TO THE PART 77 NON-PRECISION 34:1 APPROACH SURFACE

Pt No	DESCRIPTION	OBJECT TOP ELEV. (MSL)	PART 77 SURF. ELEV. (MSL)	APRCH. SURF. PENET. (FT)	PROPOSED MITIGATION
1	TREE	285	270.91	14.09	REMOVE
2	TREE	278	269.97	8.03	REMOVE
3	TREE	279	269.92	9.08	REMOVE
4	TREE	284	269.04	14.96	REMOVE
5	TREE	278	264.98	13.02	REMOVE
6	TREE	276	264.7	11.3	REMOVE
7	TREE	272	261.03	10.97	REMOVE
8	TREE	272	260.23	11.77	REMOVE
9	TREE	259	257.33	1.67	REMOVE
10	TREE	267	252.67	14.33	REMOVE
11	TREE	268	255.73	12.27	REMOVE
12	TREE	261	252.04	8.96	REMOVE
13	TREE	278	247.69	30.31	REMOVE
14	TREE	271	246.96	24.04	REMOVE
15	TREE	278	270.59	7.41	REMOVE
16	TREE	259	242.38	16.62	REMOVE
17	TREE	251	248.31	2.69	REMOVE
18	TREE	249	238.29	10.71	REMOVE
19	TREE	261	240.44	20.56	REMOVE
20	TREE	237	233.84	3.16	REMOVE
21	TREE	239	237.35	1.65	REMOVE
22	TREE	313	230.42	22.58	REMOVE
23	TREE	244	230.18	13.82	REMOVE
24	TREE	239	237.41	1.59	REMOVE
25	TREE	282	279.58	2.42	REMOVE
26	TREE	245	229.1	15.9	REMOVE
27	TREE	247	246.17	0.83	REMOVE
28	TREE	249	246.34	2.66	REMOVE
29	TREE	254	226.48	27.52	REMOVE
30	TREE	237	230	7	REMOVE
31	TREE	246	227.45	18.55	REMOVE
32	BLDG	228	225.84	2.16	LIGHT
33	TREE	250	225.11	24.89	REMOVE
34	POLE	228	222.85	5.15	LIGHT
35	TREE	238	228.06	9.94	REMOVE
36	POLE	236	222.82	13.18	LIGHT
37	TREE	273	251.58	21.42	REMOVE
38	POLE	223	221.36	1.64	LIGHT
39	TREE	259	256.34	2.66	REMOVE
40	TREE	238	232.05	5.95	REMOVE
41	POLE	232	221.97	10.03	LIGHT
42	POLE	231	221.23	9.77	LIGHT
43	POLE	228	219.62	8.38	LIGHT
44	POLE	226	225.83	0.17	LIGHT
45	POLE	230	217.82	12.18	LIGHT
46	POLE	233	223.9	9.1	LIGHT
47	TREE	264	229.18	34.82	REMOVE
48	POLE	232	220.24	11.76	LIGHT
49	POLE	227	217.27	9.73	LIGHT
50	BLDG	230	223.25	6.75	LIGHT
51	TREE	259	245.16	13.84	REMOVE
52	TREE	235	226.54	8.46	REMOVE
53	POLE	229	227.09	1.91	LIGHT
54	TREE	219	218.08	0.92	REMOVE
55	TREE	212	206.12	5.88	REMOVE
56	TREE	246	234.52	11.48	REMOVE
57	POLE	230	228	2	LIGHT
58	BLDG	230	215.47	14.53	CONFIRMED LIT
59	TREE	213	204.89	8.11	REMOVE
60	TREE	232	229.96	2.04	REMOVE
61	BLDG	219	207.78	11.22	CONFIRMED LIT
62	TREE	209	202.56	6.44	REMOVE
63	TREE	226	225.86	0.14	REMOVE
64	TREE	246	234.87	11.13	REMOVE
65	TREE	215	200.32	14.68	REMOVE
66	TREE	258	257.7	0.3	REMOVE
67	TREE	253	217.99	35.01	REMOVE
68	APBN	264	254.76	9.24	REMOVE
69	TREE	251	240.79	10.21	REMOVE
70	TREE	259	205.02	53.98	REMOVE
71	WSK	219	200	19	CONFIRMED LIT

NOTE:  
AN OBSTRUCTION STUDY WAS PERFORMED IN MAY, 2003 TITLED: "RUNWAY 1/19 APPROACH STUDY AT PITTSFIELD MUNICIPAL AIRPORT," PREPARED BY HOYLE, TANNER & ASSOCIATES, INC.

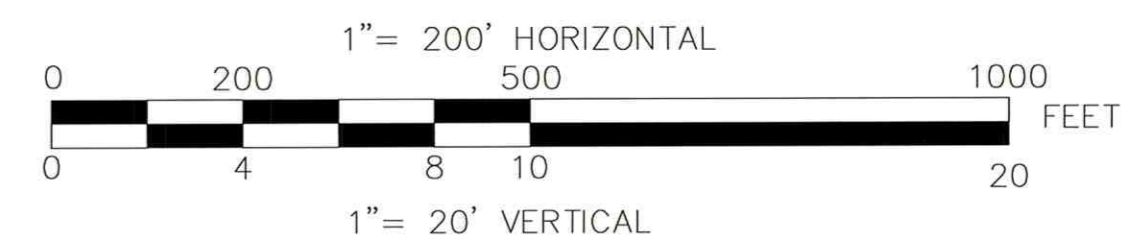
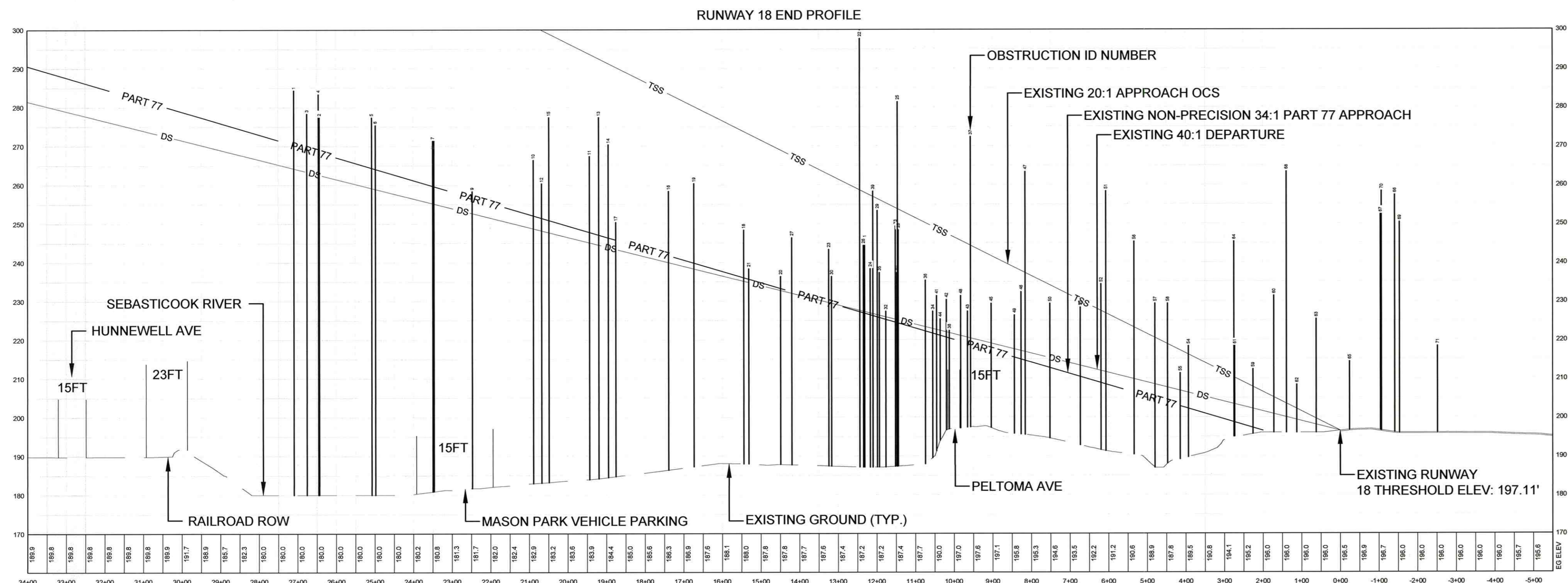
THE OBSTRUCTION STUDY ANALYZED THE THRESHOLD SITING SURFACE AND THE TERPS SURFACES, BUT DID NOT ANALYZE THE FAR PART 77 SURFACE.

THE REPORT STATES, "ALTHOUGH TERPS REQUIRES THAT BOTH 20:1 AND 34:1 SLOPE BE EVALUATED FOR STRAIGHT-IN ALIGNMENT CRITERIA, PER THE REQUEST OF FAA AIRPORTS DIVISION, ONLY THE 20:1 APPROACH SURFACE WAS ANALYZED FOR EACH RUNWAY.

- NOTES:
- OBSTRUCTION DATA SOURCED FROM FAA DATABASES BASED ON A SURVEY PERFORMED ON MAY 17, 2010 ([HTTPS://NFDC.FAA.GOV/TPSS/UDDFLIST.JSP](https://NFDC.FAA.GOV/TPSS/UDDFLIST.JSP))
  - HORIZONTAL DATUM IS BASED ON THE MAINE STATE PLANE NAD 83 US FOOT. VERTICAL DATUM IS BASED ON NAVD 88.
  - TRAVERSE ELEVATIONS ARE ACTUAL GROUND ELEVATIONS AND REQUIRE ADDITIONAL MINIMUM OBSTRUCTION CLEARANCES OVER TRANSPORTATION ROUTES. 23' FOR RAILWAYS, 17' FOR INTERSTATE, 15' FOR OTHER PUBLIC ROADS, AND 10' FOR PRIVATE ROADS.

**LEGEND**

- OBJECT W/IN 10 FT OF PART 77 SURFACE
- ▲ 101 CURRENT PENETRATION TO PART 77 SURFACE



3-23-0035-016-2014  
 PROJ. NO.: 302514  
 DRAWN: JLC  
 DESIGN: MTO  
 CHECKED: ERM  
 DATE: April 2016

BY: \_\_\_\_\_  
 DATE: \_\_\_\_\_  
 DESCRIPTION: \_\_\_\_\_

SHEET TITLE  
**INNER PORTION OF RW 18  
 APPROACH SURFACE**

TOWN OF PITTSFIELD  
 PITTSFIELD MUNICIPAL AIRPORT  
 PITTSFIELD, MAINE

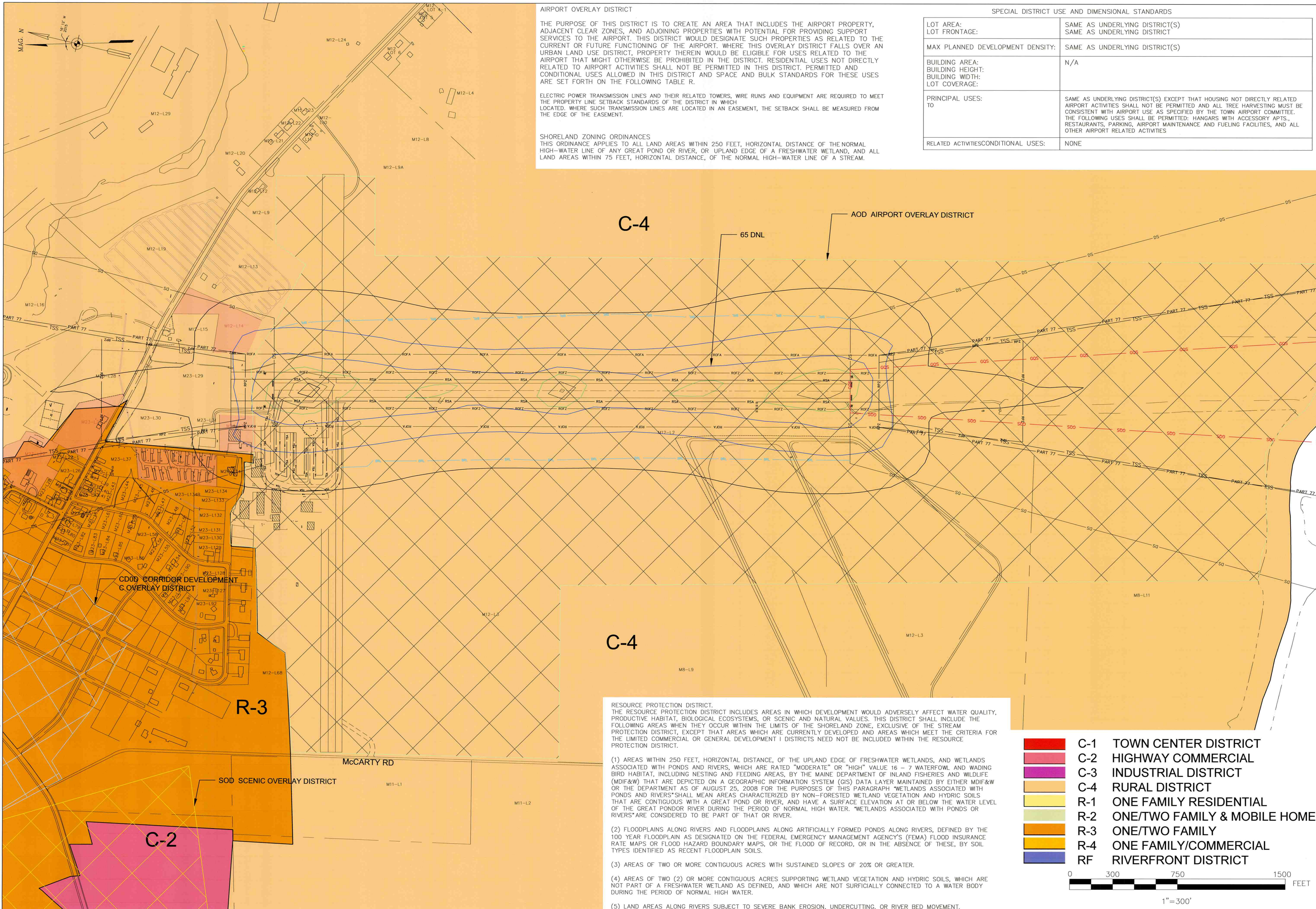
**Hoyle, Tanner & Associates, Inc.**  
 150 Dow Street Manchester, NH 03101  
 tel: (603) 669-5555  
 fax: (603) 669-4168  
 www.hoyletanner.com

SHEET **7** OF **10**





Drawing name: H:\302514 Pittsfield AMP\A\wg\Contract\9 Land Use.dwg Apr 27, 2016 - 9:22am



**AIRPORT OVERLAY DISTRICT**

THE PURPOSE OF THIS DISTRICT IS TO CREATE AN AREA THAT INCLUDES THE AIRPORT PROPERTY, ADJACENT CLEAR ZONES, AND ADJOINING PROPERTIES WITH POTENTIAL FOR PROVIDING SUPPORT SERVICES TO THE AIRPORT. THIS DISTRICT WOULD DESIGNATE SUCH PROPERTIES AS RELATED TO THE CURRENT OR FUTURE FUNCTIONING OF THE AIRPORT. WHERE THIS OVERLAY DISTRICT FALLS OVER AN URBAN LAND USE DISTRICT, PROPERTY THEREIN WOULD BE ELIGIBLE FOR USES RELATED TO THE AIRPORT THAT MIGHT OTHERWISE BE PROHIBITED IN THE DISTRICT. RESIDENTIAL USES NOT DIRECTLY RELATED TO AIRPORT ACTIVITIES SHALL NOT BE PERMITTED IN THIS DISTRICT. PERMITTED AND CONDITIONAL USES ALLOWED IN THIS DISTRICT AND SPACE AND BULK STANDARDS FOR THESE USES ARE SET FORTH ON THE FOLLOWING TABLE R.

ELECTRIC POWER TRANSMISSION LINES AND THEIR RELATED TOWERS, WIRE RUNS AND EQUIPMENT ARE REQUIRED TO MEET THE PROPERTY LINE SETBACK STANDARDS OF THE DISTRICT IN WHICH LOCATED. WHERE SUCH TRANSMISSION LINES ARE LOCATED IN AN EASEMENT, THE SETBACK SHALL BE MEASURED FROM THE EDGE OF THE EASEMENT.

**SHORELAND ZONING ORDINANCES**  
 THIS ORDINANCE APPLIES TO ALL LAND AREAS WITHIN 250 FEET, HORIZONTAL DISTANCE OF THE NORMAL HIGH-WATER LINE OF ANY GREAT POND OR RIVER, OR UPLAND EDGE OF A FRESHWATER WETLAND, AND ALL LAND AREAS WITHIN 75 FEET, HORIZONTAL DISTANCE, OF THE NORMAL HIGH-WATER LINE OF A STREAM.

SPECIAL DISTRICT USE AND DIMENSIONAL STANDARDS	
LOT AREA:	SAME AS UNDERLYING DISTRICT(S)
LOT FRONTAGE:	SAME AS UNDERLYING DISTRICT
MAX PLANNED DEVELOPMENT DENSITY:	SAME AS UNDERLYING DISTRICT(S)
BUILDING AREA:	N/A
BUILDING HEIGHT:	
BUILDING WIDTH:	
LOT COVERAGE:	
PRINCIPAL USES:	SAME AS UNDERLYING DISTRICT(S) EXCEPT THAT HOUSING NOT DIRECTLY RELATED TO AIRPORT ACTIVITIES SHALL NOT BE PERMITTED AND ALL TREE HARVESTING MUST BE CONSISTENT WITH AIRPORT USE AS SPECIFIED BY THE TOWN AIRPORT COMMITTEE. THE FOLLOWING USES SHALL BE PERMITTED: HANGARS WITH ACCESSORY APTS., RESTAURANTS, PARKING, AIRPORT MAINTENANCE AND FUELING FACILITIES, AND ALL OTHER AIRPORT RELATED ACTIVITIES
RELATED ACTIVITIES/CONDITIONAL USES:	NONE

REV. NO.	DATE	DESCRIPTION

BY: **LAND USE**

APR NO.: 3-23-0036-016-2014  
 PROJ. NO.: 302514  
 DRAWN: JLC  
 DESIGN: MTO  
 CHECKED: ERM  
 DATE: April 2016

SHEET **9** OF **10**

DO NOT SCALE DRAWING

TOWN OF PITTSFIELD  
 PITTSFIELD MUNICIPAL AIRPORT  
 PITTSFIELD, MAINE

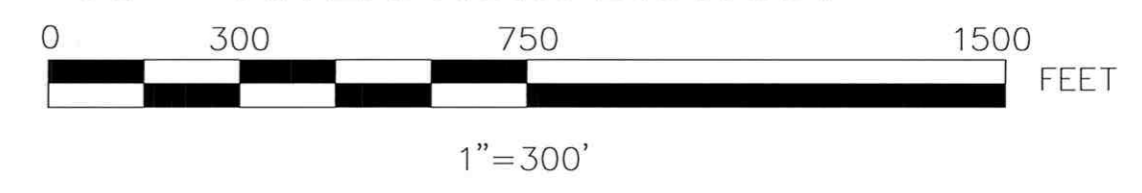
**Hoyle, Tanner & Associates, Inc.**

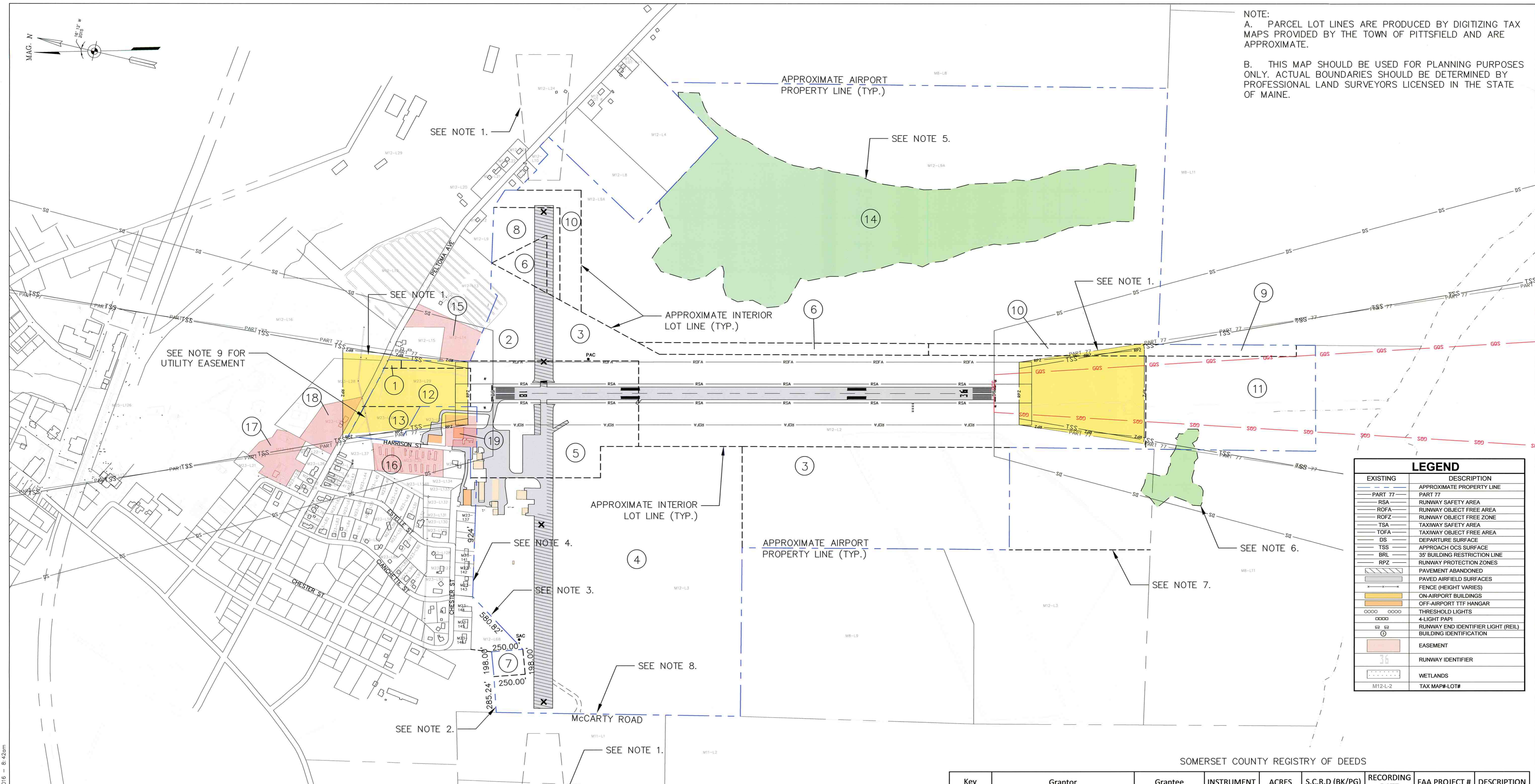
150 Dow Street, Manchester, NH 03101  
 tel: (603) 669-5555  
 fax: (603) 669-4168  
 www.hoyletanner.com

**RESOURCE PROTECTION DISTRICT.**  
 THE RESOURCE PROTECTION DISTRICT INCLUDES AREAS IN WHICH DEVELOPMENT WOULD ADVERSELY AFFECT WATER QUALITY, PRODUCTIVE HABITAT, BIOLOGICAL ECOSYSTEMS, OR SCENIC AND NATURAL VALUES. THIS DISTRICT SHALL INCLUDE THE FOLLOWING AREAS WHEN THEY OCCUR WITHIN THE LIMITS OF THE SHORELAND ZONE, EXCLUSIVE OF THE STREAM PROTECTION DISTRICT, EXCEPT THAT AREAS WHICH ARE CURRENTLY DEVELOPED AND AREAS WHICH MEET THE CRITERIA FOR THE LIMITED COMMERCIAL OR GENERAL DEVELOPMENT DISTRICTS NEED NOT BE INCLUDED WITHIN THE RESOURCE PROTECTION DISTRICT.

- AREAS WITHIN 250 FEET, HORIZONTAL DISTANCE, OF THE UPLAND EDGE OF FRESHWATER WETLANDS, AND WETLANDS ASSOCIATED WITH PONDS AND RIVERS, WHICH ARE RATED "MODERATE" OR "HIGH" VALUE 16 - 7 WATERFOWL AND WADING BIRD HABITAT, INCLUDING NESTING AND FEEDING AREAS, BY THE MAINE DEPARTMENT OF INLAND FISHERIES AND WILDLIFE (MDIF&W) THAT ARE DEPICTED ON A GEOGRAPHIC INFORMATION SYSTEM (GIS) DATA LAYER MAINTAINED BY EITHER MDIF&W OR THE DEPARTMENT AS OF AUGUST 25, 2008 FOR THE PURPOSES OF THIS PARAGRAPH "WETLANDS ASSOCIATED WITH PONDS AND RIVERS" SHALL MEAN AREAS CHARACTERIZED BY NON-FORRESTED WETLAND VEGETATION AND HYDRIC SOILS THAT ARE CONTIGUOUS WITH A GREAT POND OR RIVER, AND HAVE A SURFACE ELEVATION AT OR BELOW THE WATER LEVEL OF THE GREAT POND OR RIVER DURING THE PERIOD OF NORMAL HIGH WATER. "WETLANDS ASSOCIATED WITH PONDS OR RIVERS" ARE CONSIDERED TO BE PART OF THAT OR RIVER.
- FLOODPLAINS ALONG RIVERS AND FLOODPLAINS ALONG ARTIFICIALLY FORMED PONDS ALONG RIVERS, DEFINED BY THE 100 YEAR FLOODPLAIN AS DESIGNATED ON THE FEDERAL EMERGENCY MANAGEMENT AGENCY'S (FEMA) FLOOD INSURANCE RATE MAPS OR FLOOD HAZARD BOUNDARY MAPS, OR THE FLOOD OF RECORD, OR IN THE ABSENCE OF THESE, BY SOIL TYPES IDENTIFIED AS RECENT FLOODPLAIN SOILS.
- AREAS OF TWO OR MORE CONTIGUOUS ACRES WITH SUSTAINED SLOPES OF 20% OR GREATER.
- AREAS OF TWO (2) OR MORE CONTIGUOUS ACRES SUPPORTING WETLAND VEGETATION AND HYDRIC SOILS, WHICH ARE NOT PART OF A FRESHWATER WETLAND AS DEFINED, AND WHICH ARE NOT SURFICIALLY CONNECTED TO A WATER BODY DURING THE PERIOD OF NORMAL HIGH WATER.
- LAND AREAS ALONG RIVERS SUBJECT TO SEVERE BANK EROSION, UNDERCUTTING, OR RIVER BED MOVEMENT.

- C-1 TOWN CENTER DISTRICT
- C-2 HIGHWAY COMMERCIAL
- C-3 INDUSTRIAL DISTRICT
- C-4 RURAL DISTRICT
- R-1 ONE FAMILY RESIDENTIAL
- R-2 ONE/TWO FAMILY & MOBILE HOME
- R-3 ONE/TWO FAMILY
- R-4 ONE FAMILY/COMMERCIAL
- RF RIVERFRONT DISTRICT

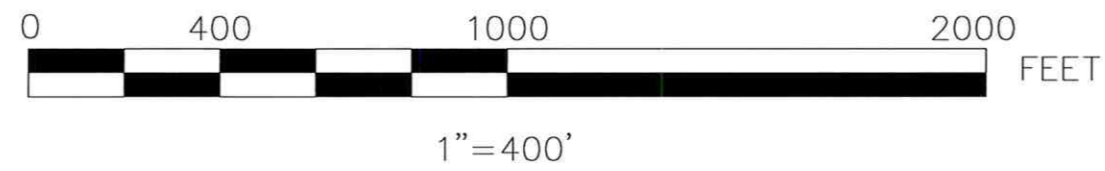




NOTE:  
 A. PARCEL LOT LINES ARE PRODUCED BY DIGITIZING TAX MAPS PROVIDED BY THE TOWN OF PITTSFIELD AND ARE APPROXIMATE.  
 B. THIS MAP SHOULD BE USED FOR PLANNING PURPOSES ONLY. ACTUAL BOUNDARIES SHOULD BE DETERMINED BY PROFESSIONAL LAND SURVEYORS LICENSED IN THE STATE OF MAINE.

EXISTING	DESCRIPTION
PART 77	APPROXIMATE PROPERTY LINE
RSA	RUNWAY SAFETY AREA
ROFA	RUNWAY OBJECT FREE AREA
ROFZ	RUNWAY OBJECT FREE ZONE
TSA	TAXIWAY SAFETY AREA
TOFA	TAXIWAY OBJECT FREE AREA
DS	DEPARTURE SURFACE
TSS	APPROACH OCS SURFACE
BRL	35' BUILDING RESTRICTION LINE
RPZ	RUNWAY PROTECTION ZONES
(Hatched)	PAVEMENT ABANDONED
(Dotted)	PAVED AIRFIELD SURFACES
(Dashed)	FENCE (HEIGHT VARIES)
(Yellow)	ON-AIRPORT BUILDINGS
(Orange)	OFF-AIRPORT TTF HANGAR
(Dashed line)	THRESHOLD LIGHTS
(Dotted line)	4-LIGHT PAPI
(Square with X)	RUNWAY END IDENTIFIER LIGHT (REIL)
(Circle with X)	BUILDING IDENTIFICATION
(Red outline)	EASEMENT
(Number 36)	RUNWAY IDENTIFIER
(Dotted area)	WETLANDS
(M12-L-2)	TAX MAP#-LOT#

NOTES:  
 1. REFER TO PLAN BK 24/PG 59 "EXHIBIT A" FOR OUTLINE OF PERPETUAL CLEAR ZONE EASEMENT OBTAINED BY THE TOWN OF PITTSFIELD 9-13-61 AND 8-2-62. LATER VERSION OF EXHIBIT A (NOT RECORDED) INDICATED IN A NOTE THAT THE 10/28 EAST-WEST RUNWAY EASEMENT GRANTOR DID NOT HAVE FEE TITLE, THEREFORE AVIGATION EASEMENTS ARE INVALID.  
 2. REFER TO "BOUNDARY RETRACEMENT SURVEY OF A PORTION OF THE FROST PROPERTY" BK 2009/PG 51. AUGUST 25, 2009.  
 3. REFER TO "BOUNDARY RETRACEMENT SURVEY OF THE HALL PROPERTY" BK 2013/PG 80. DECEMBER 16, 2013.  
 4. REFER TO "PELTOMA ACRES SUBDIVISION LAYOUT" BK 12/PG 25. MAY 3, 1960.  
 5. 64 ACRES OF PRESERVATION AS MITIGATION FOR WETLAND IMPACTS ASSOCIATED WITH RUNWAY OBSTRUCTION REMOVAL. DEP PERMIT #L-20487-TG-B-N CONDITION #3. REFER TO FIGURE E-14, "RUNWAY SAFETY ZONE PHASE II," LAST REVISED MAY 14, 2003 BY WOODLOT ALTERNATIVES, INC. NOT RECORDED, BUT INCLUDED IN WETLAND PERMIT APPLICATION.  
 6. 3.5 ACRES OF CEDAR SWAMP PRESERVATION AS MITIGATION FOR WETLAND IMPACTS ASSOCIATED WITH RUNWAY OBSTRUCTION REMOVAL. DEP PERMIT #L-20487-TG-B-N CONDITION #3. REFER TO FIGURE E-14, "RUNWAY SAFETY ZONE PHASE II," LAST REVISED MAY 14, 2003 BY WOODLOT ALTERNATIVES, INC. NOT RECORDED, BUT INCLUDED IN WETLAND PERMIT APPLICATION.  
 7. PREVIOUS EXHIBIT A INDICATED THAT THE BOUNDARY DOES NOT JOG  
 8. ANECDOTAL EVIDENCE INDICATES THAT THE AIRPORT DOES NOT HAVE ACCESS TO McCARTY ROAD.  
 9. A UTILITY EASEMENT OVER THIS PROPERTY IS LIKELY, HOWEVER, NONE HAVE BEEN PREVIOUSLY DEPICTED.



SOMERSET COUNTY REGISTRY OF DEEDS

Key	Grantor	Grantee	INSTRUMENT	ACRES	S.C.R.D (BK/PG)	RECORDING DATE	FAA PROJECT #	DESCRIPTION
1	Walter Morrill	Town of Pittsfield	Fee	0.2+/-	223/443	10/05/1893		
2	Anson Crowell	Town of Pittsfield	Fee	4.0	453/526	3/24/1941		
3	Aubrey Call	Town of Pittsfield	Fee	110.0	453/527	3/24/1941		
4	Charles Small	Town of Pittsfield	Fee	70.0	462/150	3/24/1941		
5	LaGorio, McMichael, Humphrey, Pushor	Town of Pittsfield	Fee	26.8	454/375	3/28/1941		
6	Lester Nelson	Town of Pittsfield	Fee	8.0	453/537	3/29/1941		
7	Dominick Frost	Town of Pittsfield	Fee	1.0	453/548	4/4/1941		
8	Lester Nelson	Town of Pittsfield	Fee	5.0	460/598	1/14/1942		
9	Ruebin Rankin	Town of Pittsfield	Fee	3.0	471/11	1/20/1942		
10	Lester Nelson	Town of Pittsfield	Fee	9.5	462/509	1/23/1942		
11	Kathleen Gostyla	Town of Pittsfield	Fee	37.0	861/806	3/16/1976		
12	Alma Patten	Town of Pittsfield	Fee	5.5	978/9	3/13/1981	5-23-0036-02	
13	Ronello Brown	Town of Pittsfield	Fee	2.85	1706/330	7/15/1991		
14	Joaquin Pereira	Town of Pittsfield	Fee	201.5	3037/254	11/18/2002	3-23-0036-04	
15	Terrance Fredrick	Town of Pittsfield	Easement		3083/67	2/27/2003	3-23-0036-04	Avigation
16	Diane Hall	Town of Pittsfield	Easement		3082/228	2/27/2003	3-23-0036-04	Avigation
17	Scott Jones	Town of Pittsfield	Easement		3082/281	2/27/2003	3-23-0036-04	Avigation
18	Ronello & Constance Brown	Town of Pittsfield	Easement		3082/285	2/27/2003	3-23-0036-04	Avigation
19	Ronald Curtis	Town of Pittsfield	Easement		3082/291	2/27/2003	3-23-0036-04	Avigation

**PROPERTY MAP**

**TOWN OF PITTSFIELD  
PITTSFIELD MUNICIPAL AIRPORT  
PITTSFIELD, MAINE**

**Hoyle Tanner Associates, Inc.**

150 Dow Street, Manchester, NH 03101  
 Tel: (603) 669-5555  
 Fax: (603) 669-4168  
 www.hoyletanner.com

Town of Pittsfield  
Certified Business Friendly

SHEET TITLE: **PROPERTY MAP**

AIP NO.: 3-23-0036-016-2014  
 PROJ. NO.: 302514  
 DRAWN: JLC  
 DESIGN: MTO  
 CHECKED: ERM  
 DATE: April 2016

BY: \_\_\_\_\_  
 DESCRIPTION: \_\_\_\_\_  
 REV. NO.: \_\_\_\_\_  
 DATE: \_\_\_\_\_

DO NOT SCALE DRAWING

SHEET **10** OF **10**