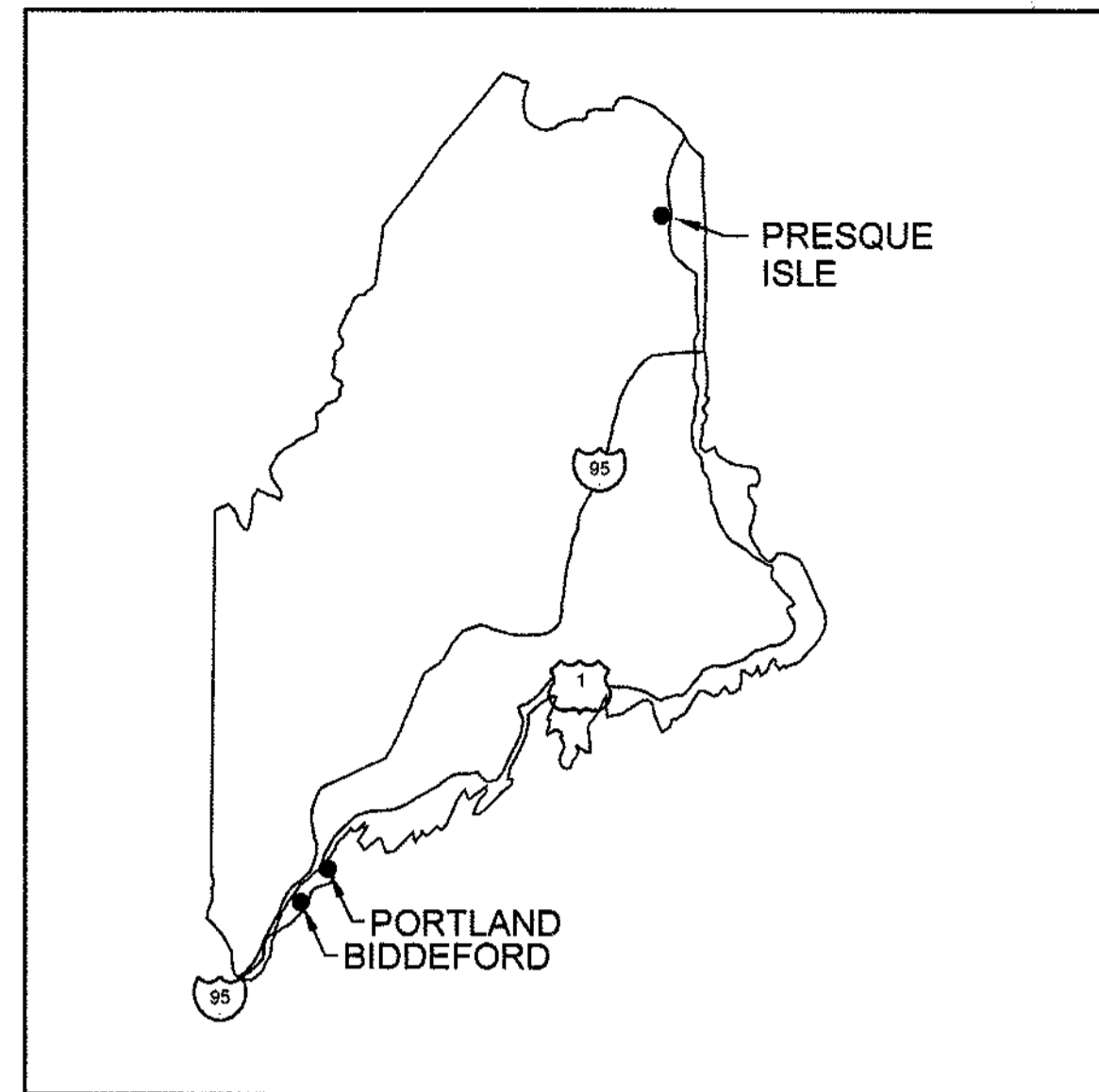
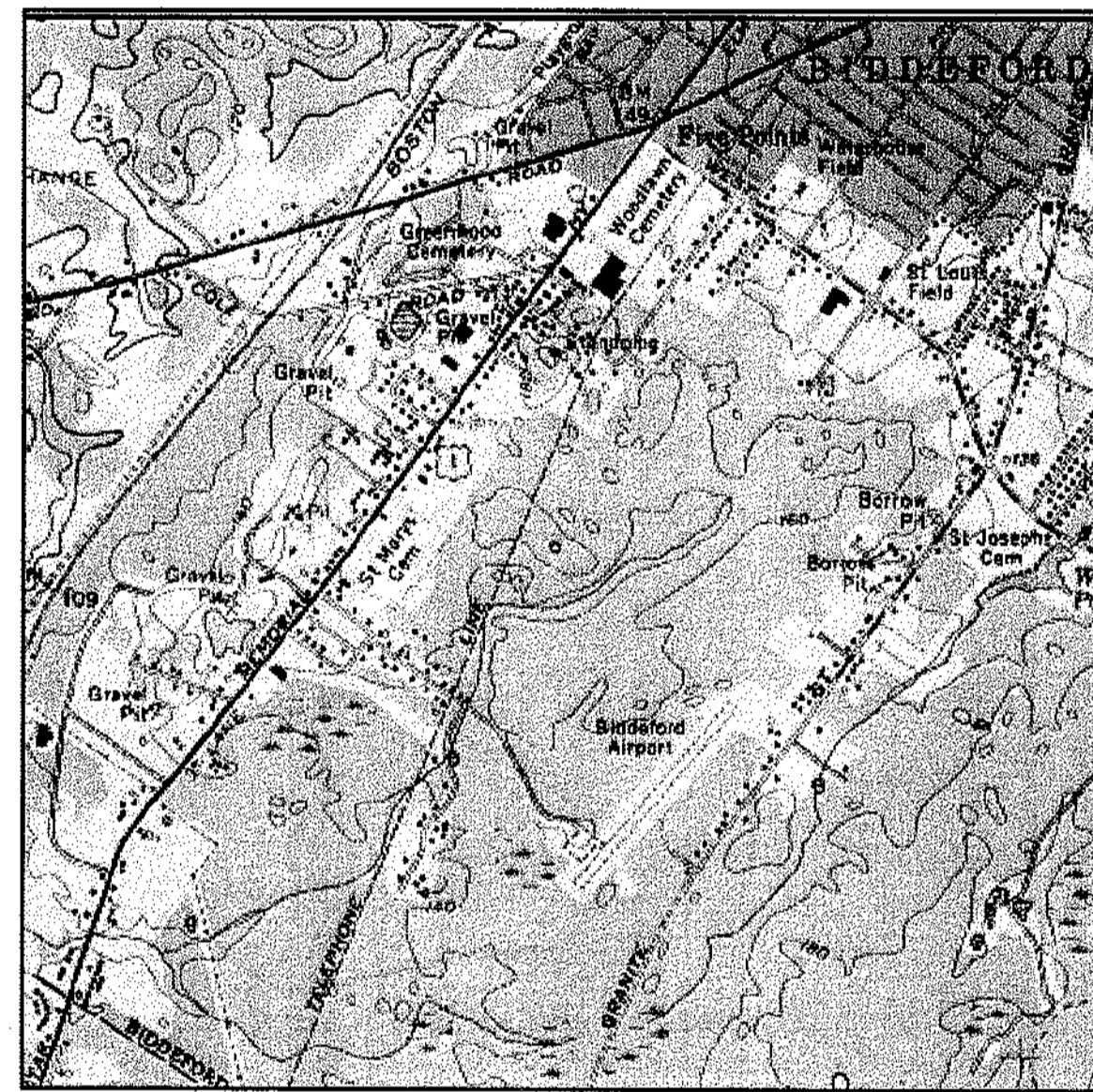


# AIRPORT MASTER PLAN UPDATE

## BIDDEFORD MUNICIPAL AIRPORT BIDDEFORD, MAINE



LOCATION MAP



VICINITY MAP

A.I.P. NO. 3-23-0009-04

FEBRUARY 2005

SHEET	TITLE
1	TITLE SHEET
2	EXISTING FACILITIES PLAN
3	ULTIMATE AIRPORT LAYOUT
4	TERMINAL AREA PLAN
5	APPROACH PLAN AND PROFILE RW 6 - 24
6	FAR PART 77 IMAGINARY SURFACES PLAN
7	LAND USE PLAN
8	PROPERTY MAP (EXHIBIT A)

INDEX OF SHEETS

OFFICES:

VERMONT Montpelier N. Springfield S. Burlington Williston	NEW YORK Newburgh Pawling Rochester Saratoga Springs	MASSACHUSETTS Boston Greenfield Westford
NEW HAMPSHIRE Manchester	MAINE Portland Presque Isle	FLORIDA Port Charlotte Sarasota

**DH**  
**Dufresne-Henry**

Portland, Maine  
Tel. (207) 775-3211 • FAX (207) 775-6434  
[www.dufresne-henry.com](http://www.dufresne-henry.com)





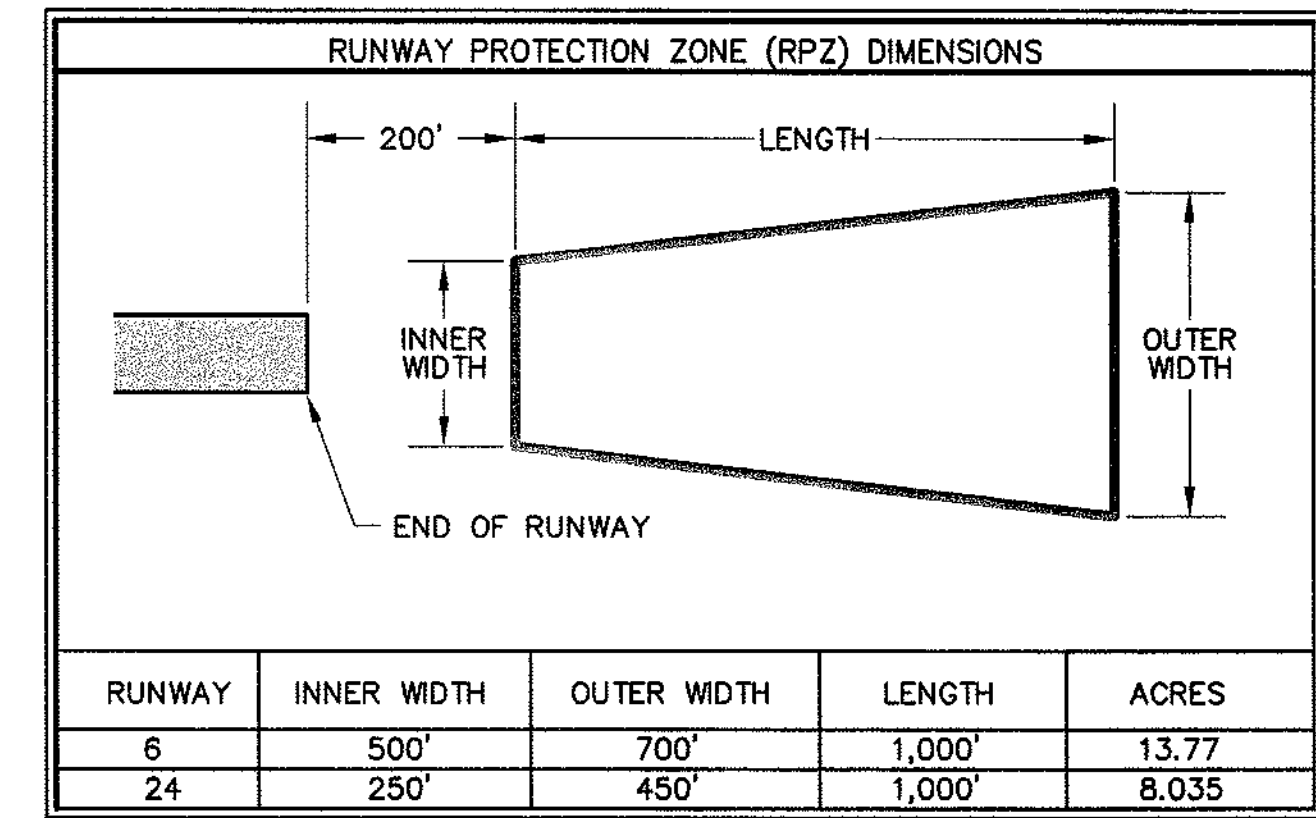
RUNWAY DATA	EXISTING	PROPOSED
RUNWAY LENGTH	3,011'	3,011'
RUNWAY WIDTH	75'	75'
PAVEMENT STRENGTH	25,000 LBS. SINGLE WHEEL	25,000 LBS. SINGLE WHEEL
APPROACH SURFACES	R/W 6: 20:1 NP (UTILITY) R/W 24: 20:1 VISUAL	R/W 6: 20:1 NP (UTILITY) R/W 24: 20:1 VISUAL
RUNWAY MARKINGS	NON-PRECISION	NON-PRECISION
RUNWAY LIGHTING	MIRL	MIRL
RUNWAY NAVAIDS	R/W 6: VASI 4L R/W 24: NONE	R/W 6: PAPI R/W 24: PAPI
EFFECTIVE GRADIENT	0.3%	0.3%
RUNWAY END ELEVATIONS	R/W 6: 146.5' MSL R/W 24: 154.8' MSL	R/W 6: 146.5' MSL R/W 24: 154.8' MSL
RUNWAY END COORDINATES	R/W 6: 43°27'39.59"N 070°28'33.91"W R/W 24: 43°28'02.03"N 070°28'07.36"W	R/W 6: 43°27'39.59"N 070°28'33.91"W R/W 24: 43°28'02.03"N 070°28'07.36"W
RUNWAY SAFETY AREA	150' X 300'	150' X 300'
RUNWAY OBJECT FREE AREA	500' X 300'	500' X 300'
TAXIWAY LIGHTING	ENTRANCE LIGHTS	ENTRANCE LIGHTS

AIRPORT DATA	EXISTING	PROPOSED
AIRPORT ELEVATION	157' MSL	157' MSL
AIRPORT REFERENCE POINT	LAT. 43°27'50.8"N LONG. 70°28'20.6"W	LAT. 43°27'50.8"N LONG. 70°28'20.6"W
MEAN MAX. TEMP. (HOTTEST MO.)	78°F	78°F
DESIGN AIRCRAFT	PILATUS PC-12	PILATUS PC-12
AIRPORT REFERENCE CODE (ARC)	AII (UTILITY)	AII (UTILITY)
FUEL AVAILABILITY	100 LL	100 LL
AIRPORT/TERMINAL NAVAIDS	AIRPORT BEACON, LIGHTED WINDCONE WITH SEGMENTED CIRCLE	AIRPORT BEACON, LIGHTED WINDCONE WITH SEGMENTED CIRCLE

EXISTING	ON-AIRPORT BUILDINGS	PROPOSED
①	FBO	
②-③	LEASED PUBLIC HANGARS	
④	LEASED PUBLIC BUILDING	
	SRE BUILDING	⑤
⑥-②6	PRIVATE CONVENTIONAL HANGARS	
	EAA (PRIVATE)	②7

NOTE:  
BUILDING RESTRICTION LINE (BRL) WAS ESTABLISHED IN ACCORDANCE WITH FAA DESIGN AND FAR PART 77 CRITERIA. ITS LOCATION IN BIDDEFORD UTILIZES A 20 FT. VERTICAL OBJECT HEIGHT. THE BRL LOCATION MAY CHANGE DUE TO GROUND CONTOURS OR DIFFERENT OBJECT HEIGHTS, BUT ALWAYS IN ACCORDANCE WITH FAR PART 77 AND FAA DESIGN CRITERIA.

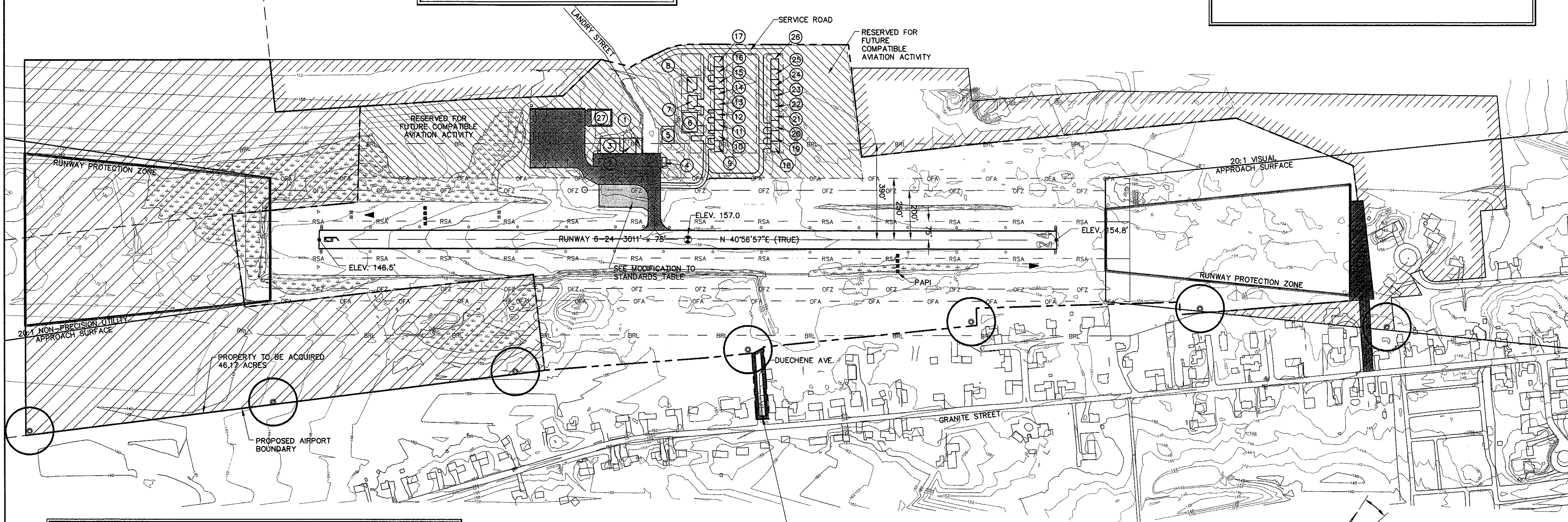
LEGEND	EXISTING	PROPOSED
AIRPORT PROPERTY LINE	---	---
PROPERTY TO BE ACQUIRED	N/A	▨
PAVEMENT	▨	▨
AVIGATION EASEMENT LINE	▨	▨
FENCE LINE	---	SAME
BUILDINGS	▭	SAME
UTILITY POLE	○	SAME
REIL	⊥	
VASI	⊥	N/A
PAPI	N/A	⊥
LIGHTED WIND CONE WITH SEGMENTED CIRCLE	⊙	⊙
WIND CONE	N/A	▶
OBJECT-FREE AREA (OFA)	SAME	---
OBJECT-FREE ZONE (OFZ)	SAME	---
RUNWAY SAFETY AREA (RSA)	SAME	---
BUILDING RESTRICTION LINE (BRL)	SAME	---
WETLANDS (SKETCHED)	⊙	SAME
AIRPORT REFERENCE POINT (ARP)	⊙	SAME
OBSTRUCTION LIGHT	N/A	○



FEDERAL AVIATION ADMINISTRATION  
 APPROVED: *Ralph Merriam*  
 MANAGER, AIRPORTS PLANNING BRANCH  
 DATE: *October 4, 2005*

MAINE DEPARTMENT OF TRANSPORTATION  
 APPROVED: *[Signature]*  
 DIRECTOR, OFFICE OF PASSENGER TRANSPORTATION  
 DATE: *9-20-05*

CITY OF BIDDEFORD  
 APPROVED: *[Signature]*  
 CITY MANAGER  
 DATE: *3-23-05*



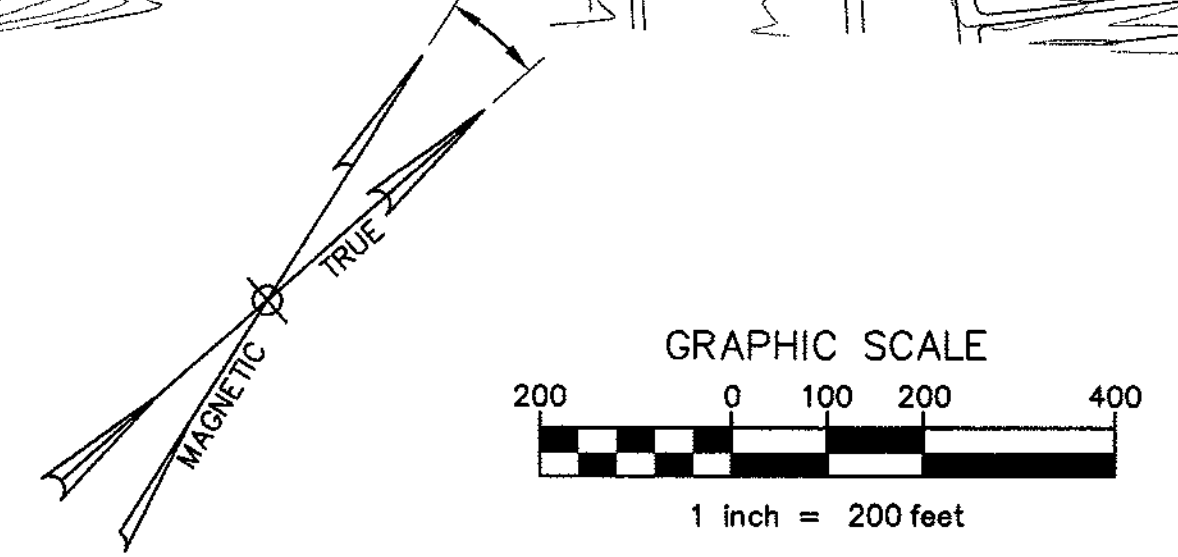
MODIFICATION TO STANDARD			
ITEM MODIFIED	CURRENT STANDARD	PROPOSED DIMENSION	DATE APPROVED
TRANSIENT PARKING APRON DISTANCE FROM RUNWAY	OFA 250' FROM RUNWAY	125' FROM RUNWAY CENTERLINE PENDING FUTURE APRON EXPANSION	

CERTIFICATION: I CERTIFY THAT ALL AIRPORT ELEMENTS SHOWN ON THIS ALP ARE IN ACCORDANCE WITH CRITERIA CONTAINED IN THE CURRENT EDITION OF FAA AC 150/5300-13 EXCEPT AS NOTED IN THIS TABLE.

*[Signature]*  
 SIGNATURE  
 EDWARD CLIFFORD / CITY MANAGER

*3-23-05*  
 DATE

RECOMMENDED TRANSFER FROM AIRPORT TO GENERAL CITY PROPERTY. SEE PROPERTY MAP DATED OCTOBER 2004



MAG. NORTH  
 (VARIATION 16°22')  
 SEPT. 2004 ANNUAL RATE OF  
 CHANGE 00°2'E/YEAR  
 SOURCE: NGDC

**Dufresne-Henry**  
 Biddeford, Maine  
 Tel: (207) 775-8800 Fax: (207) 775-6464  
 www.dufresne-henry.com

BIDDEFORD MUNICIPAL AIRPORT  
 ULTIMATE AIRPORT LAYOUT  
 BIDDEFORD

Project No.	81202035.01
Prof. Manager	ECD
Prof. Designer	ECD
Drawn By	CEJ
Checked By	ECD
Scale	1"=300'
Approved	DGD
Date	FEBRUARY 2005

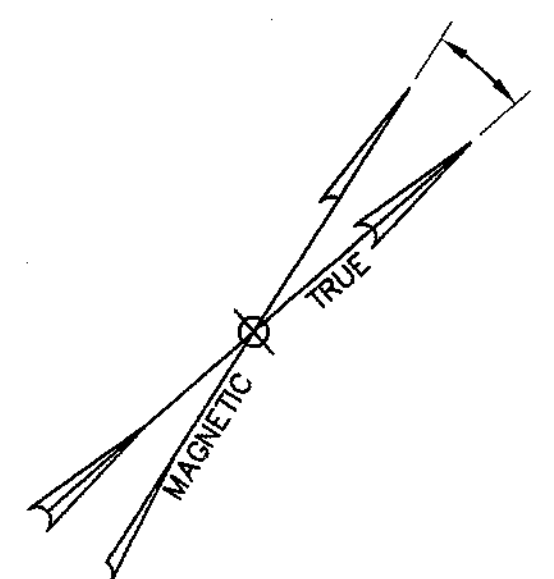
Sheet 3 of 8



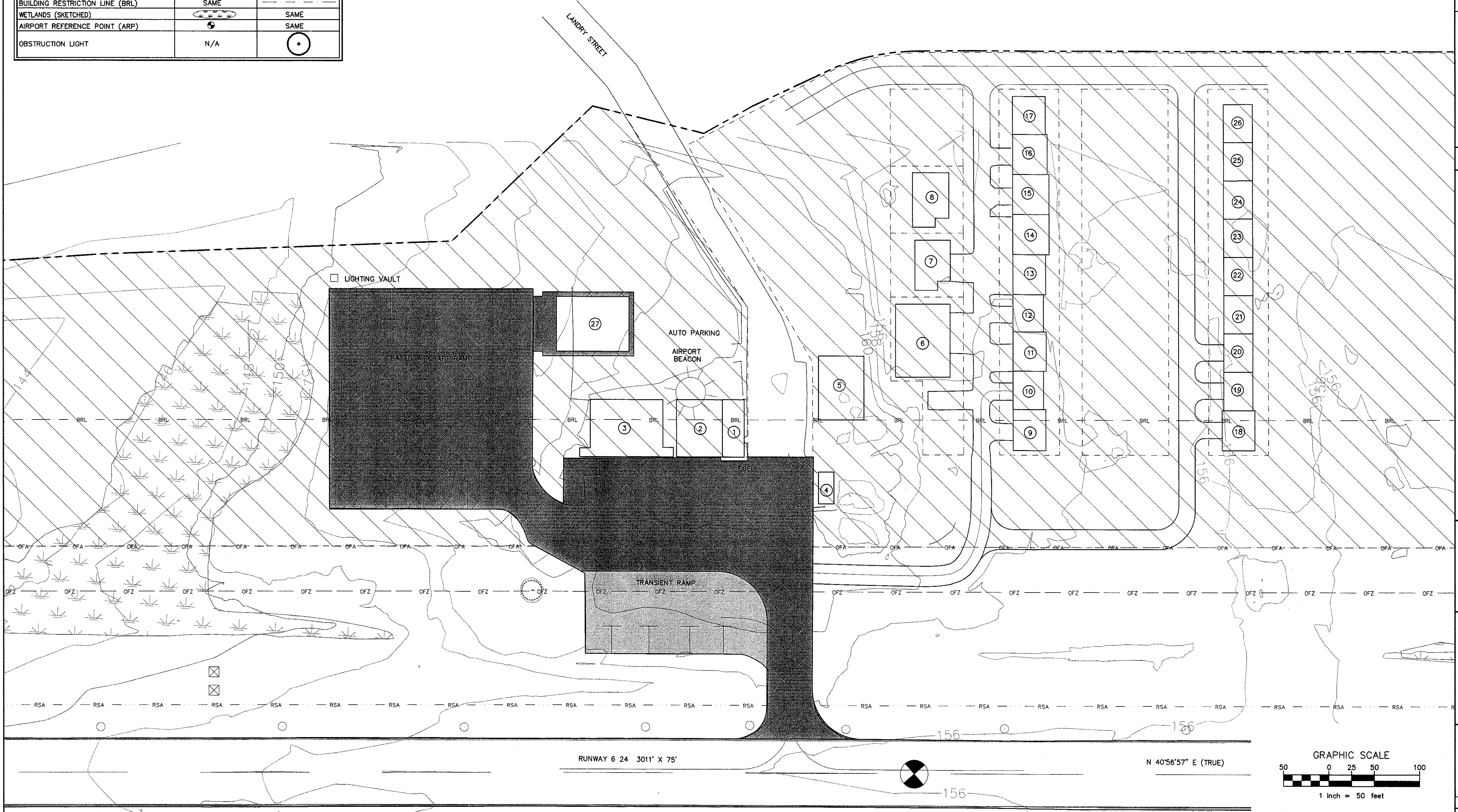
LEGEND	EXISTING	PROPOSED
AIRPORT PROPERTY LINE	---	---
PROPERTY TO BE ACQUIRED	N/A	▨
PAVEMENT	▭	▨
AVIGATION EASEMENT LINE	▭	▭
FENCE LINE	---	SAME
BUILDINGS	▭	SAME
UTILITY POLE	○	SAME
REIL	◁	◁
VASI	▭	N/A
PAPI	N/A	▭
LIGHTED WIND CONE WITH SEGMENTED CIRCLE	○	○
WIND CONE	N/A	▶
OBJECT-FREE AREA (OFA)	SAME	---
OBJECT-FREE ZONE (OFZ)	SAME	---
RUNWAY SAFETY AREA (RSA)	SAME	---
BUILDING RESTRICTION LINE (BRL)	SAME	---
WETLANDS (SKETCHED)	▭	SAME
AIRPORT REFERENCE POINT (ARP)	○	SAME
OBSTRUCTION LIGHT	N/A	○

EXISTING	ON-AIRPORT BUILDINGS	PROPOSED
①	FBO	
②-③	LEASED PUBLIC HANGARS	
④	LEASED PUBLIC BUILDING	
	SRE BUILDING	⑤
⑥-②⑥	PRIVATE CONVENTIONAL HANGARS	
	EAA (PRIVATE)	②⑦

**NOTE:**  
 BUILDING RESTRICTION LINE (BRL) WAS ESTABLISHED IN ACCORDANCE WITH FAA DESIGN AND FAR PART 77 CRITERIA. ITS LOCATION IN BIDDEFORD UTILIZES A 20 FT. VERTICAL OBJECT HEIGHT. THE BRL LOCATION MAY CHANGE DUE TO GROUND CONTOURS OR DIFFERENT OBJECT HEIGHTS, BUT ALWAYS IN ACCORDANCE WITH FAR PART 77 AND FAA DESIGN CRITERIA.



MAG. NORTH  
 (VARIATION 16°22')  
 SEPT. 2004 ANNUAL RATE OF  
 CHANGE 00°2'E/YEAR  
 SOURCE: NGDC



Portland, Maine  
 Tel. (207) 775-3211 • Fax (207) 775-5454  
 www.dufresne-henry.com

Rev.	Description	By	Date

BIDDEFORD MUNICIPAL AIRPORT
TERMINAL AREA

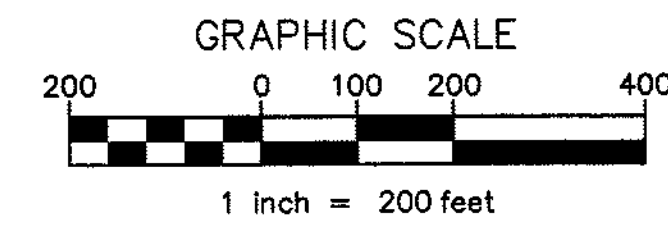
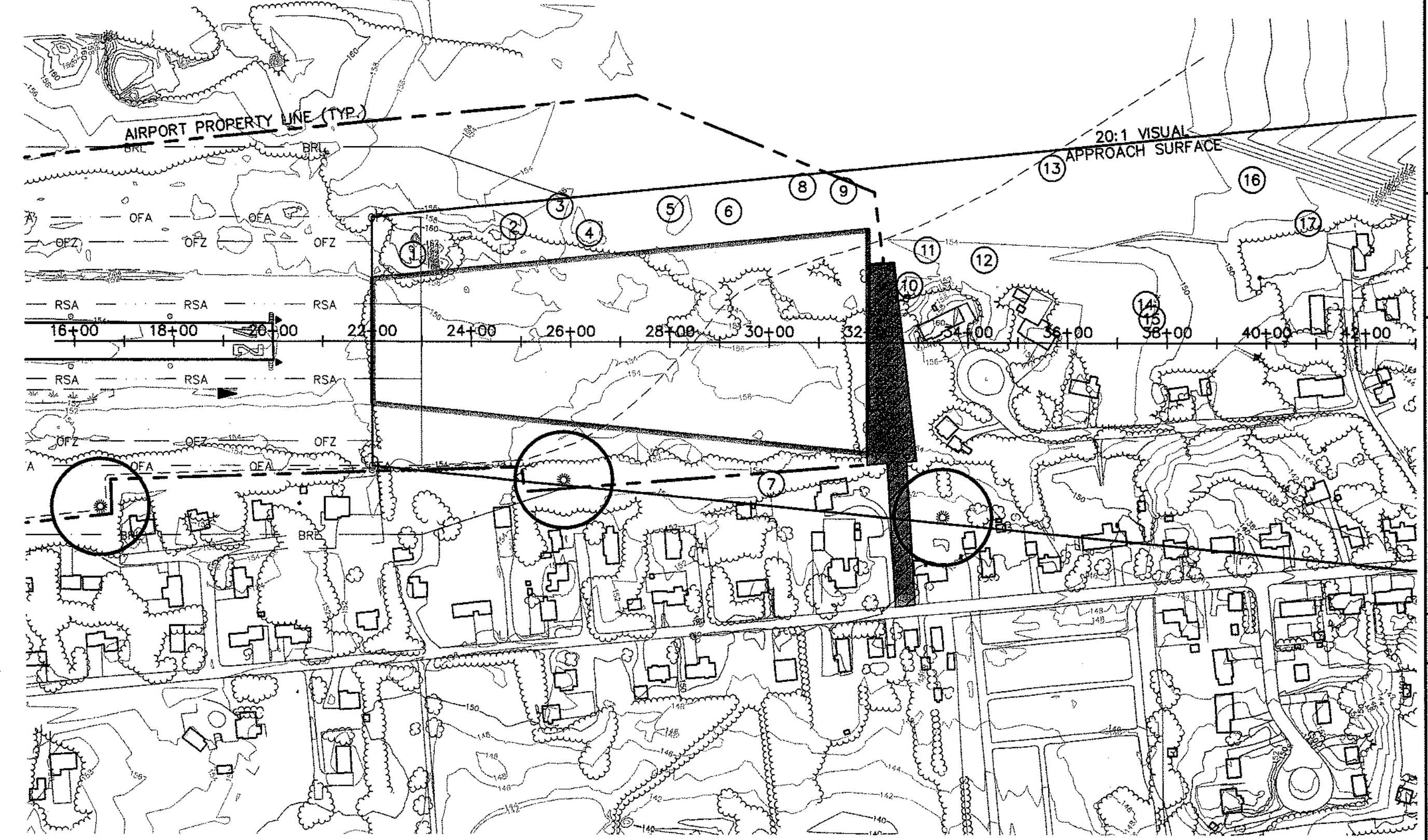
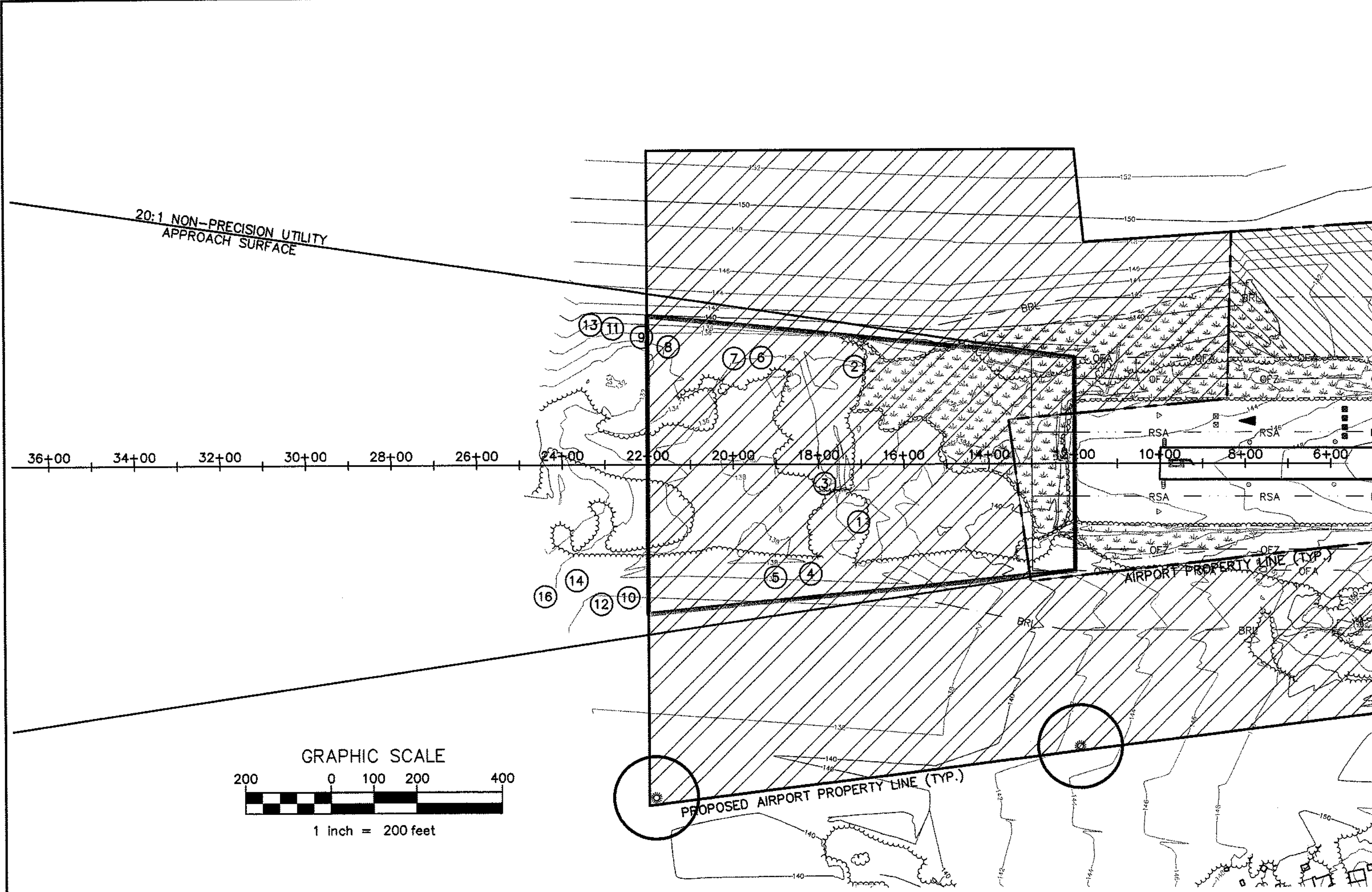
BIDDEFORD
BIDDEFORD

Project No.	6120035 01
Proj. Manager	EGD
Proj. Designer	EGD
Drawn By	LRK
Checked By	EGD
Scale	1"=50'
Approved	DCD
Date	FEBRUARY 2005

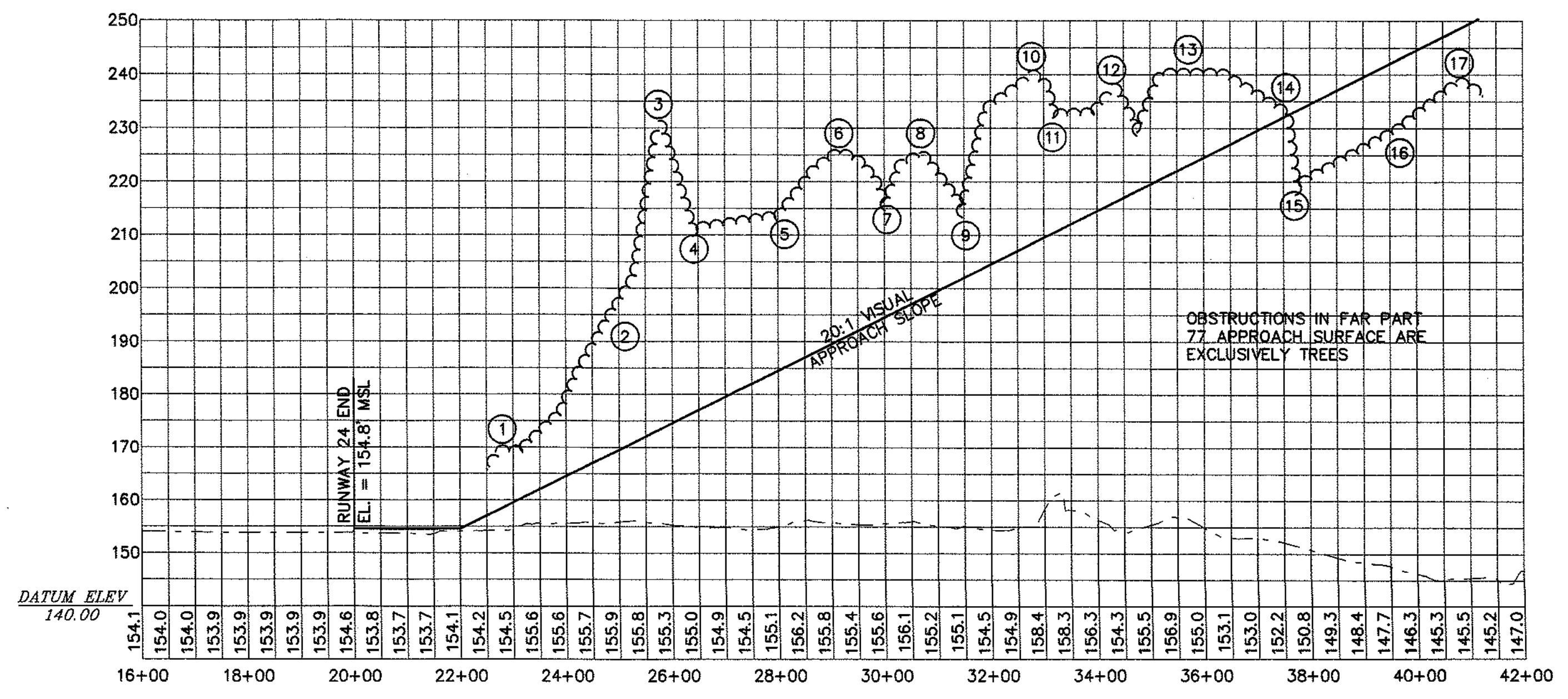
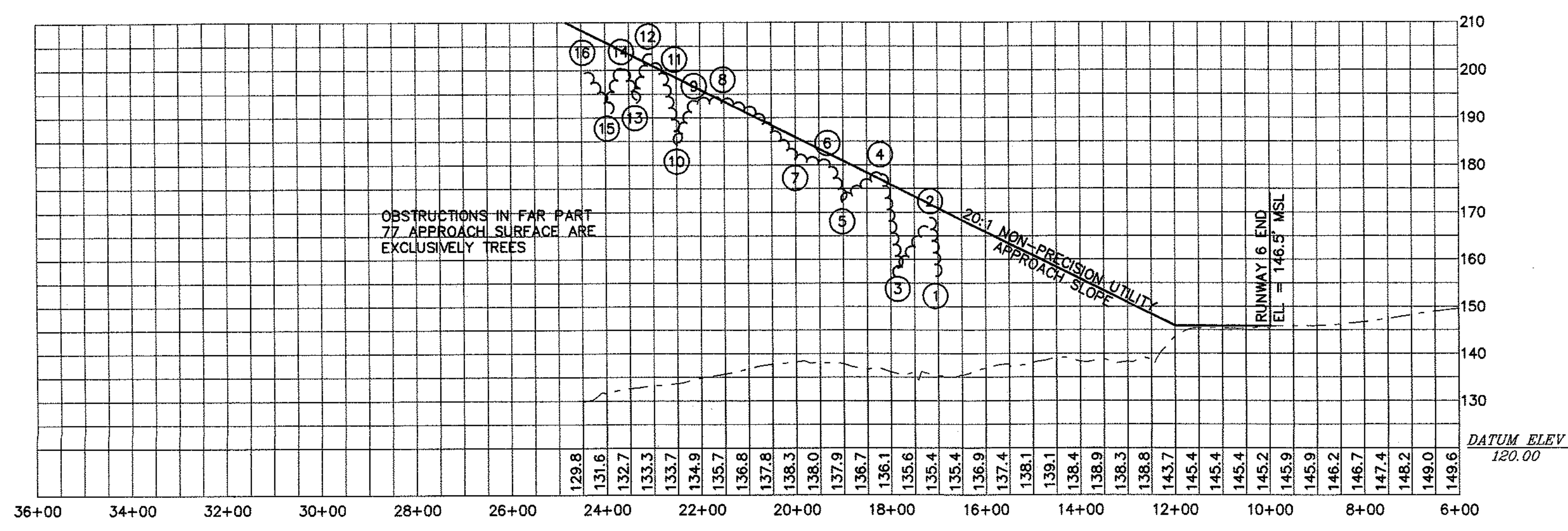
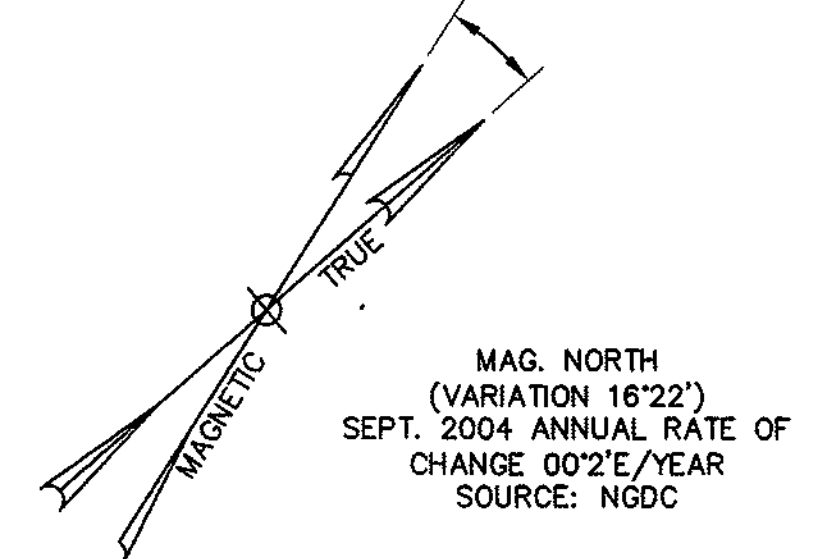
Sheet 4 of 8
D

K:\Project Data Files\Biddeford\REVISED\6120035 01\_ALP\_SiteSheet.dwg, Layout1, 2/9/2005 8:44:19 AM, c:\users\j... Coor: 125600 Paper: Roll - 36.4x60.00 .j23





LEGEND	
CENTER OF APPROACH GROUND PROFILE	
VEGETATION WITHIN APPROACH SURFACE	



SCALE  
 VERTICAL: 1" = 20'  
 HORIZONTAL: 1" = 200'

Rev.	Description	By	Date

MAINE

BIDDEFORD MUNICIPAL AIRPORT  
**RUNWAY 6-24 APPROACH  
 PLAN AND PROFILE**

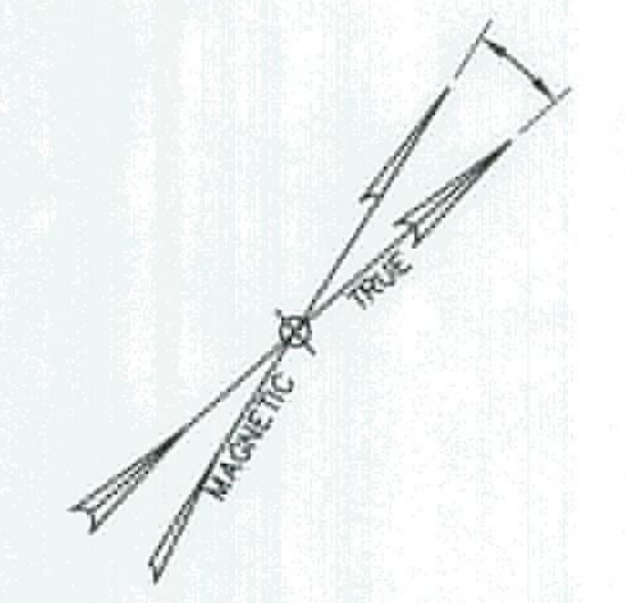
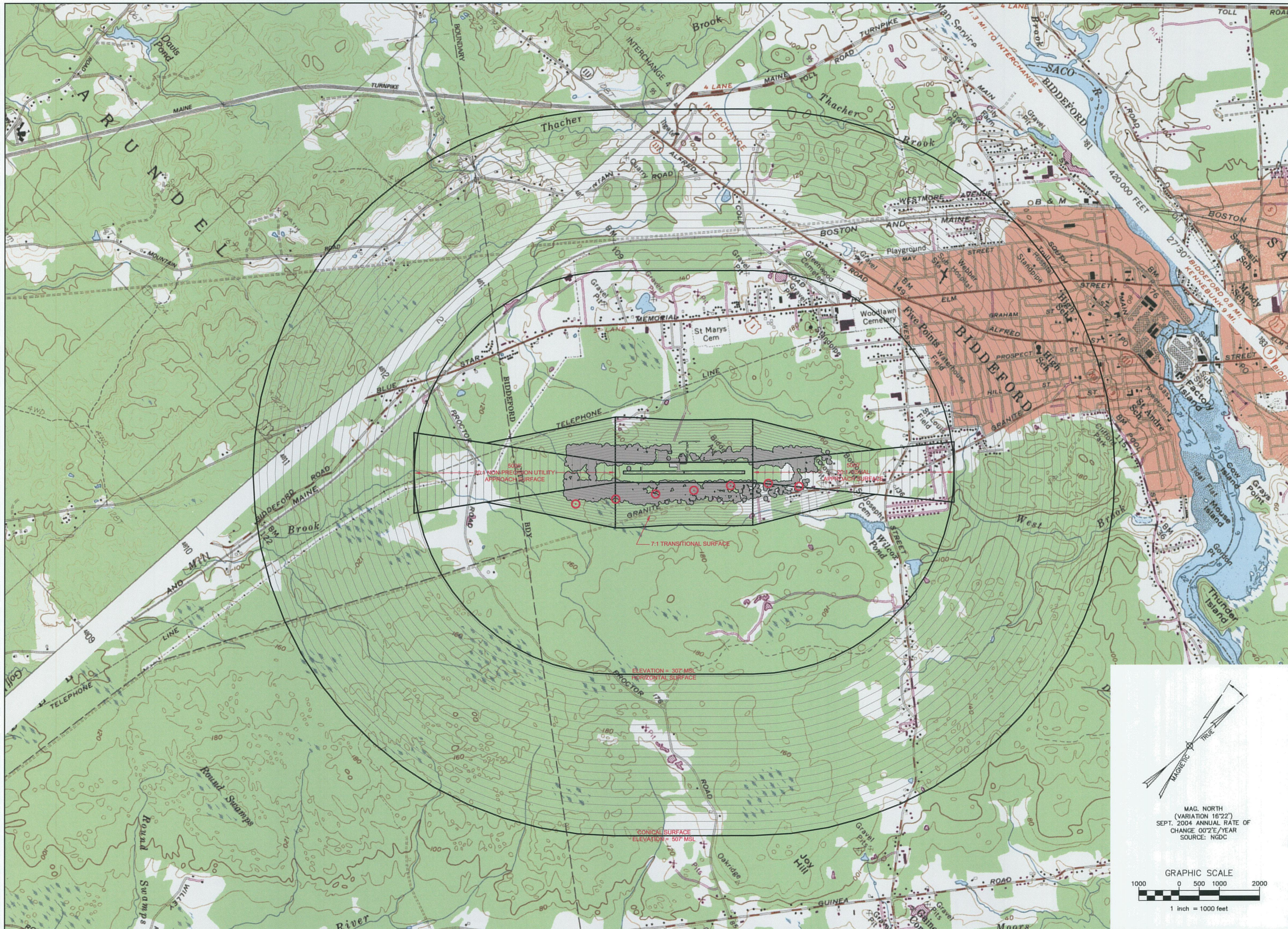
BIDDEFORD

Project No.	8120035.01
Prog. Manager	ECB
Proj. Designer	ECB
Drawn By	LRK
Checked By	ECB
Scale	AS SHOWN
Approved	DCD
Date	FEBRUARY, 2005

K:\Project Data Files\Biddeford\KCS\Sheet 05 - plan and profile.dwg, Layout1, 2/15/2005 2:00:38 PM, gjakson, C:\DSD\DWG\Paper\Sheet\_05\_Merugi.pcd



K:\Project Data Files\Biddeford\ME\15\15020301 ALP Site\Sheet 06, far part 77 plan.dwg, Layout1, 2/15/2006 2:42:36 PM, c:\akum, ME-PT1-1P\15020301-Cover-Cover.dwg, E:\hansel\j\ac



Portland, Maine  
Tel. (207) 775-3231 • FAX (207) 775-6434  
www.dufresne-henry.com

Rev.	Description	By	Date

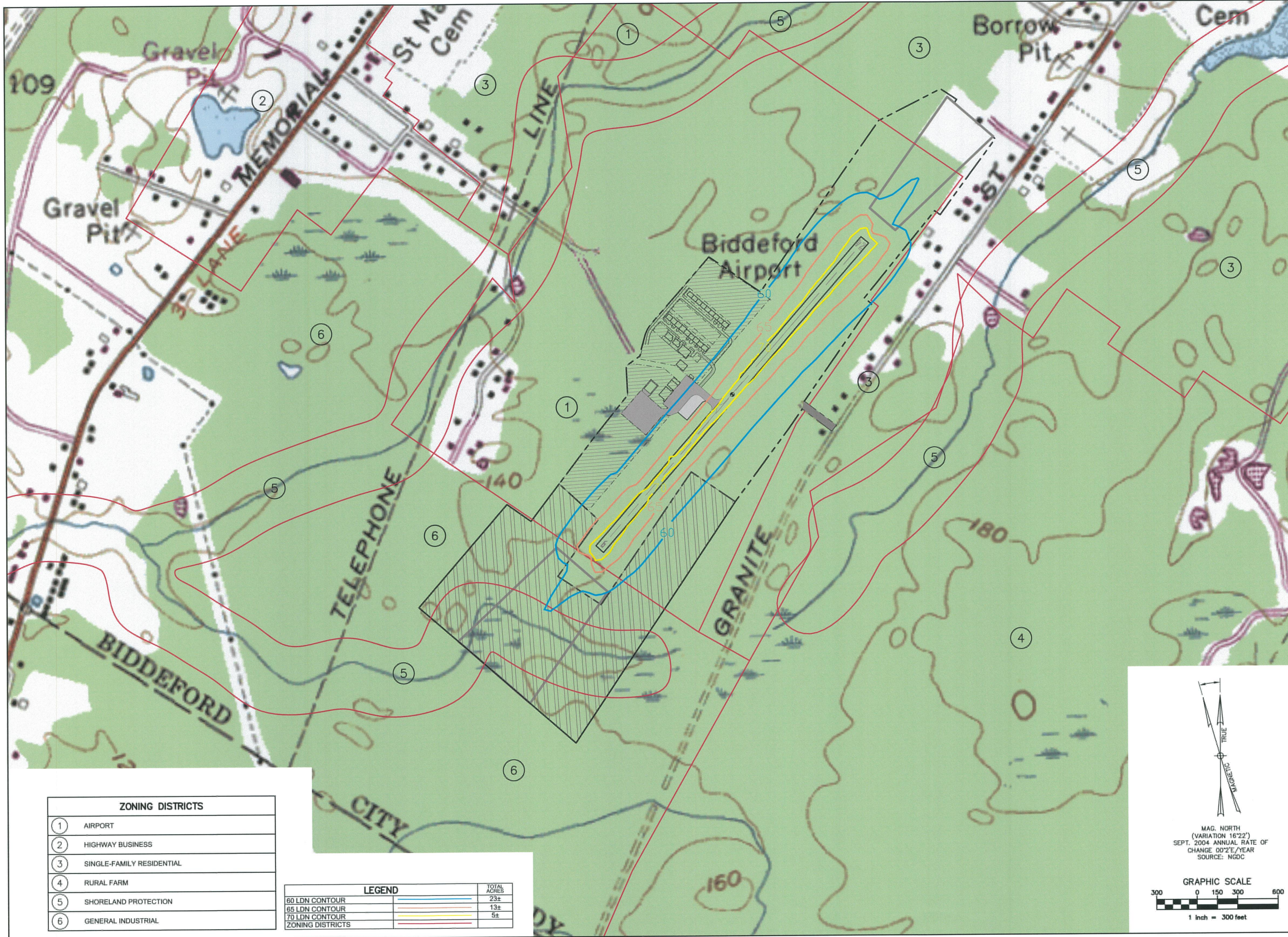
BIDDEFORD MUNICIPAL AIRPORT  
BIDDEFORD  
FAR PART 77

Project No.	81200301
Proj. Manager	ECD
Proj. Designer	ECD
Drawn By	LRK
Checked By	ECD
Scale	1"=1000'
Approved	DCD
Date	FEBRUARY 2006

Sheet 6 of 8  
D



K:\Project Data Files\Biddford\BHE\75812003\01 ALP Schematic 07. larc use.dwg, Layout1, 2/15/2005 2:40:51 PM, gpacken, ME-PRF-HP-10500(C:\user\gpacken) 1/3



**DH**  
**Dufresne-Henry**  
 Portland, Maine  
 Tel: (207) 775-3211 • FAX: (207) 775-4414  
 www.dufresne-henry.com

Rev.	Description	By	Date

BIDDEFORD MUNICIPAL AIRPORT  
**LAND USE PLAN**

Project No.	B120035.01
Proj. Manager	ECD
Proj. Designer	ECD
Drawn By	LWK
Checked By	ECD
Scale	1"=300'
Approved	DCD
Date	FEBRUARY 2005

ZONING DISTRICTS	
①	AIRPORT
②	HIGHWAY BUSINESS
③	SINGLE-FAMILY RESIDENTIAL
④	RURAL FARM
⑤	SHORELAND PROTECTION
⑥	GENERAL INDUSTRIAL

LEGEND		TOTAL ACRES
60 LDN CONTOUR		23±
65 LDN CONTOUR		13±
70 LDN CONTOUR		5±
ZONING DISTRICTS		

MAGNETIC  
 TRUE

MAG. NORTH  
 (VARIATION 16°22')  
 SEPT. 2004 ANNUAL RATE OF  
 CHANGE 00'2"/YEAR  
 SOURCE: NGDC

GRAPHIC SCALE

300 0 150 300 600

1 inch = 300 feet

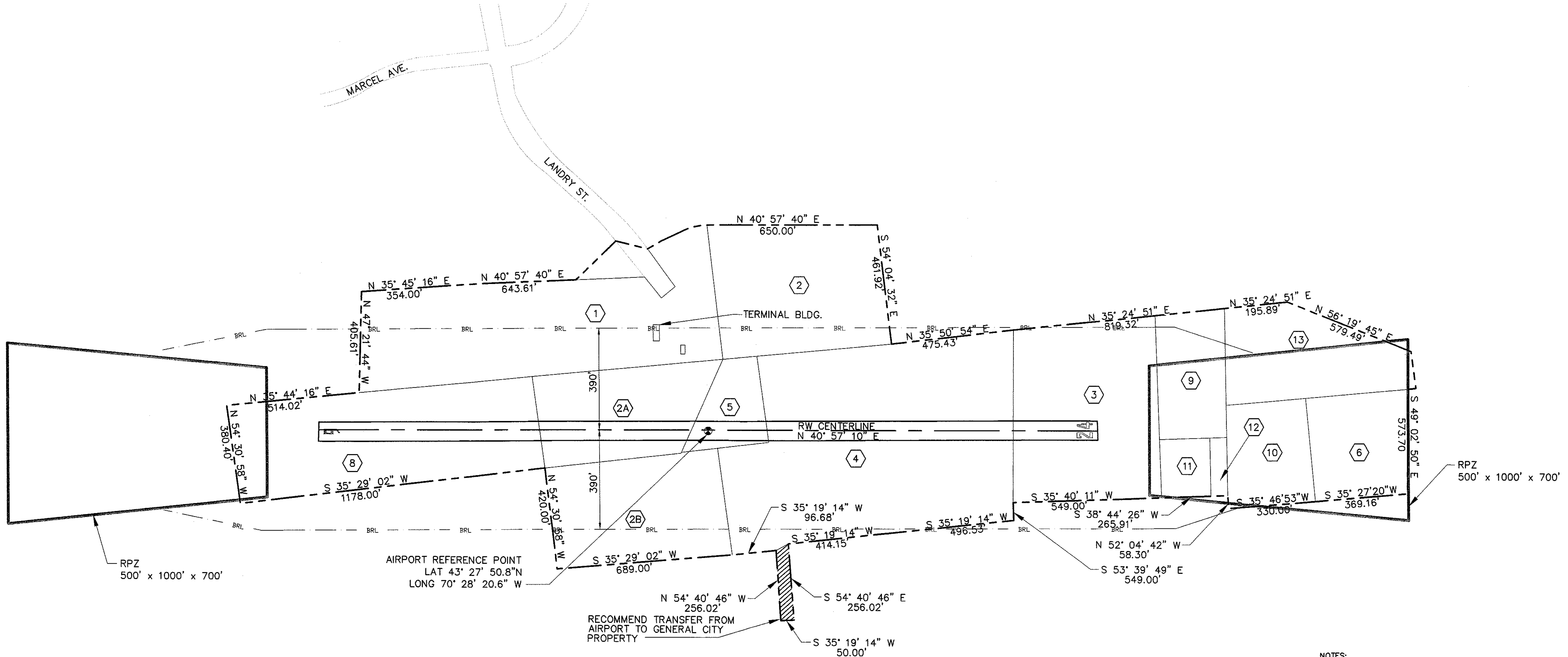


INVENTORY OF PARCELS

PARCEL NUMBER	GRANTOR	GRANTEE	INSTRUMENT	TOTAL ACERAGE	ACQUISITION DATE	Y.C.R.D. BOOK - PAGE	REMARKS
1	ORRIN H. FOSS	CITY OF BIDDEFORD	FEE	12	7 FEB. 35	847 - 424	
2A	GEORGE C. FOGG	CITY OF BIDDEFORD	FEE	4.5	7 FEB. 35	847 - 425	
2B	GEORGE C. FOGG	CITY OF BIDDEFORD	FEE	6.5	7 FEB. 35	847 - 425	
3	AMEDEE CHATIGNY	CITY OF BIDDEFORD	FEE	6.5	8 FEB. 35	847 - 427	
4	MINNIE H. RICHARDS	CITY OF BIDDEFORD	FEE	17.9	8 FEB. 35	847 - 424	
5	ALMA E. STACKPOLE et al	CITY OF BIDDEFORD	FEE	1.8	11 FEB. 35	860-271	
6	PAUL BILODEAU	CITY OF BIDDEFORD	WARRENTY FEE	3.68	7 FEB. 35	1306 - 250	A.I.P. # 3-23-0009-03
7	EZRA C. WAKEFIELD	CITY OF BIDDEFORD	FEE	4.6	31 OCT. 60	1432 - 256	
8	THOMAS J. BREEN	CITY OF BIDDEFORD	FEE	4.5	7 OCT. 60	847 - 424	
9	EDW. L. & ELIZA L. CARON et al	CITY OF BIDDEFORD	FEE	2.9	13 OCT. 60	1441 - 099	
10	HEIRS OF MARY MORGAN	CITY OF BIDDEFORD	FEE	2.8	19 DEC. 60	1801 - 418	
11	VICTOR FLEURENT & SONS INC.	CITY OF BIDDEFORD	EMINENT DOMAIN	.95	15 MAY 64	1623 - 024	
12	VICTOR & DELIA FLEURENT	CITY OF BIDDEFORD	EMINENT DOMAIN	.35	15 MAY 64	1623 - 025	
13	THERESA M. FORTIN	CITY OF BIDDEFORD	WARRENTY FEE	4.97		2189 - 189	A.I.P. # 3-23-0009-03; SEE ALSO 670 - 147

PARCEL NOTES:

1. ACERAGE AMOUNTS WERE TAKEN FROM CITED DEED IF GIVEN THEREIN; OTHERWISE, AREAS WERE CALCULATED FROM PROPERTY DESCRIPTIONS, OR, IF NECESSARY, PLANIMETERED FROM THIS PLAN.
2. PARCEL 15 WAS TRANSFERRED FROM AIRPORT INDUSTRIAL PARK AFTER 1983 BY AGREEMENT WITHIN CITY OF BIDDEFORD.
3. PARCEL 2C REQUEST FOR RELEASE PENDING.



AIRPORT PROPERTY LINE	----
AIRPORT PARCEL LINE	_____
OTHER PARCEL LINE	----- BRL -----
PROPERTY PARCEL	⊗
BUILDING RESTRICTION LINE	----- BRL -----

NOTES:

1. AIRPORT PERIMETER PROPERTY LINES WERE COMPILED DEEDS, PLANS AND INSTRUMENTS OF RECORD. CERTIFICATION AS TO ACCURACY OR CORRECTNESS OF THE DIMENSIONS DEPICTED HERON IS NEITHER IMPLIED OR INTENDED.
2. UNLESS OTHERWISE NOTED, BEARINGS ARE BASED ON TRUE NORTH.

GRAPHIC SCALE

200 0 100 200 400

1 inch = 200 feet



Rev.	Description	By	Date

MAINE  
BIDDEFORD MUNICIPAL AIRPORT  
EXHIBIT A PROPERTY MAP  
BIDDEFORD

Project No.	JMW
Proj. Manager	ECD
Proj. Designer	CEJ
Drawn By	CEJ
Checked By	CBK
Scale	1"=200'
Approved	ECD
Date	FEBRUARY 2005

Sheet 8 of 8