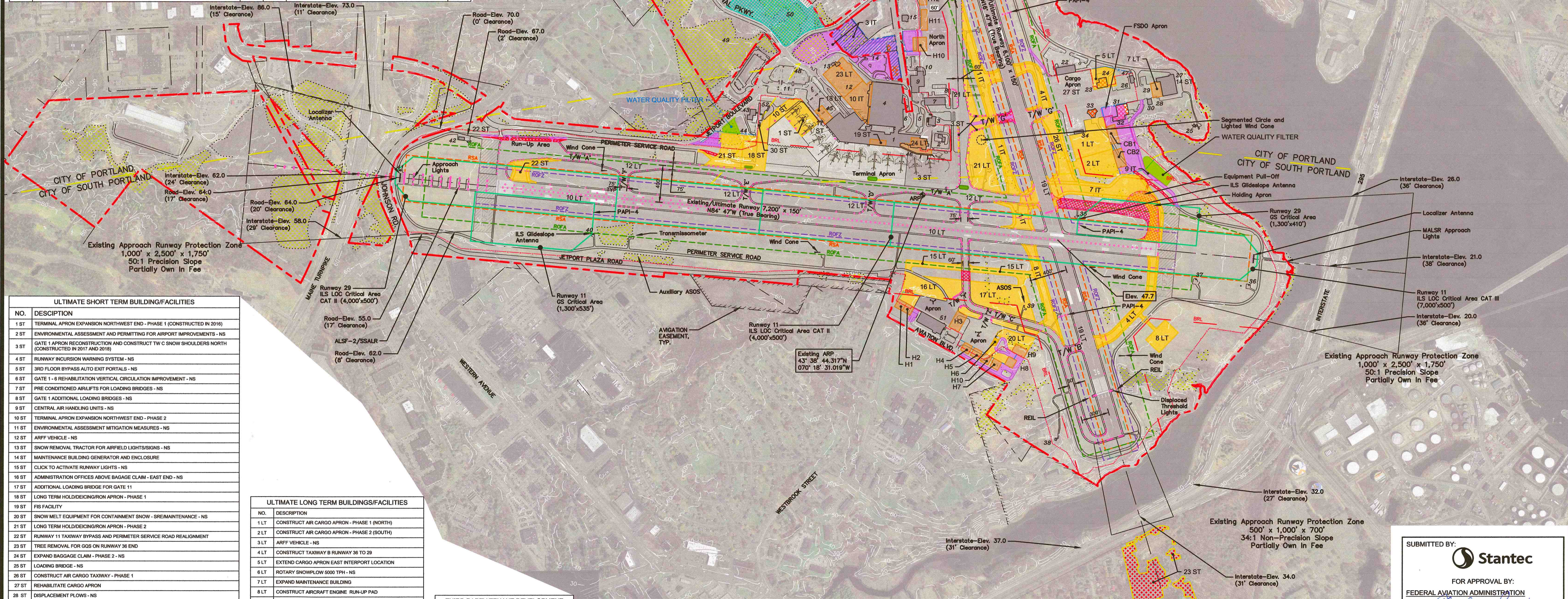


EXISTING BUILDINGS/FACILITIES			EXISTING BUILDINGS/FACILITIES		
NO.	DESCRIPTION	ELEV.	NO.	DESCRIPTION	ELEV.
1	TERMINAL BUILDING	122.1	27	AIRPORT MAINTENANCE BUILDING	
2	AIR TRAFFIC CONTROL TOWER	161.7	28	VEHICLE FUEL (DIESEL/GASOLINE)	
3	AIRCRAFT RESCUE AND FIRE FIGHTING	86.5	29	FUEL DISPENSING STATION	
4	PARKING GARAGE	141	30	SAND/SALT STORAGE	
5	CELL PHONE LOT/PASSENGER PICKUP		31	GENERAL AVIATION HANGAR/OFFICES	
6	RENTAL CAR FACILITY		32	FLIGHT STANDARDS DISTRICT OFFICE	63.8
7	GENERAL AVIATION HANGAR/OFFICES	89.6	33	HEXAGON HANGER	58.8
8	FUEL FARM	74	34	MAINTENANCE/EQUIPMENT STORAGE	67.5
9	GENERAL AVIATION HANGAR/OFFICES	98.8	35	RUNWAY 29 GLIDESLOPE BUILDING	86.7
10	GENERAL AVIATION TERMINAL		36	RUNWAY 11 LOCALIZER BUILDING	
11	EMPLOYEE PARKING		37	FAA ELECTRICAL VAULT	
12	LONG TERM PARKING		38	REMOTE TRANSMITTER/RECEIVER SITE	
13	AIRPORT PARKING OFFICE AND VEHICLE MAINTENANCE FACILITY/NON-RESERVED TAXI		39	AUTOMATED SURFACE OBSERVATION SYSTEM	
14	THE NORTH LOT (OVERFLOW PARKING)		40	RUNWAY 11 GLIDESLOPE BUILDING	67.5
15	RENTAL CAR FACILITIES	86.7	41	RUNWAY 29 LOCALIZER BUILDING	75.4
16	SELF SERVICE AVIATION FUEL	94.2	42	FAA ALSF BUILDING	
17	GENERAL AVIATION HANGAR	95.1	43	GLYCOL RECYCLING FACILITY	59
18	GENERAL AVIATION HANGAR		44	UNDERGROUND STORAGE TANK FOR SPENT DEICING FLUID	
19	GENERAL AVIATION HANGAR	91.6	45	UNDERGROUND OIL STORAGE TANK (12,000 GALLONS)	
20	GENERAL AVIATION HANGAR	92	46	UNDERGROUND OIL STORAGE TANK (10,000 GALLONS)	
21	FAA TECH OPS FACILITY	46.8	47	GENERATOR FUEL (DIESEL)	
22	FED EX FACILITY	71.1	48	GEO THERMAL WELL VAULT	
23	CUSTOMS OFFICE		49	SUPPORT PARCEL	N.A.
24	GENERAL AVIATION HANGAR/OFFICE	61.2	50	SUPPORT PARCEL	N.A.
25	AIRPORT BEACON	115.8	51	GENERAL AVIATION HANGAR/OFFICES	
26	LIGHTING VAULT		52	DEICING OPERATIONS FACILITY	

LEGEND		
EXISTING	ULTIMATE	DESCRIPTION
[Symbol]	[Symbol]	AIRPORT PROPERTY LINE
[Symbol]	[Symbol]	AVIGATION EASEMENT
[Symbol]	[Symbol]	MUNICIPAL BOUNDARY
[Symbol]	[Symbol]	BUILDING RESTRICTION LINE (BRL)
[Symbol]	[Symbol]	RUNWAY OBJECT FREE AREA (ROFA)
[Symbol]	[Symbol]	RUNWAY OBJECT FREE ZONE (ROFZ)
[Symbol]	[Symbol]	RUNWAY SAFETY AREA (RSA)
[Symbol]	[Symbol]	PRECISION OBSTACLE FREE ZONE (POFZ)
[Symbol]	[Symbol]	BUILDING REMOVAL
[Symbol]	[Symbol]	ILS/GS/LOC CRITICAL AREA
[Symbol]	[Symbol]	PROPERTY ACQUISITION
[Symbol]	[Symbol]	AIRPORT BUSINESS
[Symbol]	[Symbol]	AIRPORT BUFFER AREA
[Symbol]	[Symbol]	BUILDING / STRUCTURES
[Symbol]	[Symbol]	FACILITY CONSTRUCTION - AIRFIELD
[Symbol]	[Symbol]	FACILITY CONSTRUCTION - OTHER
[Symbol]	[Symbol]	WATER QUALITY FILTER
[Symbol]	[Symbol]	NO TAXI ISLAND
[Symbol]	[Symbol]	FENCING
[Symbol]	[Symbol]	AIRPORT REFERENCE POINT (ARP)
[Symbol]	[Symbol]	AIRPORT ROTATING BEACON
[Symbol]	[Symbol]	NAVIGATIONAL AID LIGHTS (PAPI)
[Symbol]	[Symbol]	RUNWAY END IDENTIFICATION LIGHTS (REIL)
[Symbol]	[Symbol]	AIRFIELD LIGHTS
[Symbol]	[Symbol]	SEGMENTED CIRCLE / WIND INDICATOR
[Symbol]	[Symbol]	WIND INDICATOR (LIGHTED)
[Symbol]	[Symbol]	TOPOGRAPHY
[Symbol]	[Symbol]	WETLAND

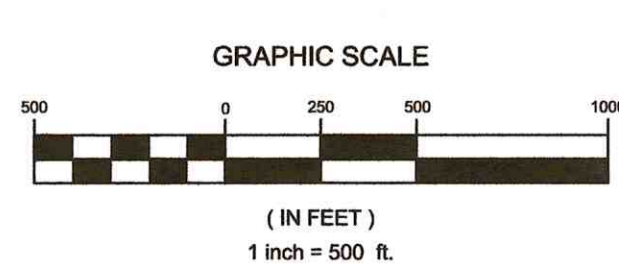


ULTIMATE SHORT TERM BUILDING/FACILITIES	
NO.	DESCRIPTION
1 ST	TERMINAL APRON EXPANSION NORTHWEST END - PHASE 1 (CONSTRUCTED IN 2016)
2 ST	ENVIRONMENTAL ASSESSMENT AND PERMITTING FOR AIRPORT IMPROVEMENTS - NS
3 ST	GATE 1 APRON RECONSTRUCTION AND CONSTRUCT TW C SNOW SHOULDERS NORTH (CONSTRUCTED IN 2017 AND 2018)
4 ST	RUNWAY INCURSION WARNING SYSTEM - NS
5 ST	3RD FLOOR BYPASS AUTO EXIT PORTALS - NS
6 ST	GATE 1 - 6 REHABILITATION VERTICAL CIRCULATION IMPROVEMENT - NS
7 ST	PRE-CONDITIONED AIRLIFTS FOR LOADING BRIDGES - NS
8 ST	GATE 1 ADDITIONAL LOADING BRIDGES - NS
9 ST	CENTRAL AIR HANDLING UNITS - NS
10 ST	TERMINAL APRON EXPANSION NORTHWEST END - PHASE 2
11 ST	ENVIRONMENTAL ASSESSMENT MITIGATION MEASURES - NS
12 ST	ARFF VEHICLE - NS
13 ST	SNOW REMOVAL TRACTOR FOR AIRFIELD LIGHTS/SIGNS - NS
14 ST	MAINTENANCE BUILDING GENERATOR AND ENCLOSURE
15 ST	CLICK TO ACTIVATE RUNWAY LIGHTS - NS
16 ST	ADMINISTRATION OFFICES ABOVE BAGGAGE CLAIM - EAST END - NS
17 ST	ADDITIONAL LOADING BRIDGE FOR GATE 11
18 ST	LONG TERM HOLD/DEICING APRON - PHASE 1
19 ST	FIS FACILITY
20 ST	SNOW MELT EQUIPMENT FOR CONTAINMENT SNOW - SREMAINTENANCE - NS
21 ST	LONG TERM HOLD/DEICING APRON - PHASE 2
22 ST	RUNWAY 11 TAXIWAY BYPASS AND PERIMETER SERVICE ROAD REALIGNMENT
23 ST	TREE REMOVAL FOR GOS ON RUNWAY 36 END
24 ST	EXPAND BAGGAGE CLAIM - PHASE 2 - NS
25 ST	LOADING BRIDGE - NS
26 ST	CONSTRUCT AIR CARGO TAXIWAY - PHASE 1
27 ST	REHABILITATE CARGO APRON
28 ST	DISPLACEMENT PLOWS - NS
29 ST	AIRPORT SECURITY FENCE AND GATE UPGRADES (NORTH EAST AREA)
30 ST	DEICING OPERATIONS FACILITY RELOCATION
NS - NOT SHOWN	

ULTIMATE LONG TERM BUILDINGS/FACILITIES	
NO.	DESCRIPTION
1 LT	CONSTRUCT AIR CARGO APRON - PHASE 1 (NORTH)
2 LT	CONSTRUCT AIR CARGO APRON - PHASE 2 (SOUTH)
3 LT	ARFF VEHICLE - NS
4 LT	CONSTRUCT TAXIWAY B RUNWAY 36 TO 29
5 LT	EXTEND CARGO APRON EAST INTERPORT LOCATION
6 LT	ROTARY SNOWPLOW 5000 TPH - NS
7 LT	EXPAND MAINTENANCE BUILDING
8 LT	CONSTRUCT AIRCRAFT ENGINE RUN-UP PAD
9 LT	SRE 18' FRT MTD BROOM - NS
10 LT	STRENGTHEN/REHAB RUNWAY 11-29
11 LT	DISPLACEMENT PLOWS/SPREADERS - NS
12 LT	STRENGTHEN/REHAB TAXIWAY A, D, E, AND F
13 LT	2,000 GALLON LIQUID SPREADER - NS
14 LT	ARFF VEHICLE - NS
15 LT	CONSTRUCT SOUTH APRON TAXIWAY
16 LT	CONSTRUCT SOUTH GENERAL AVIATION APRON - PHASE 1
17 LT	CONSTRUCT SOUTH GENERAL AVIATION APRON - PHASE 2
18 LT	TERMINAL WESTERLY EXPANSION
19 LT	REHABILITATE RUNWAY 18-36, TAXIWAY B AND TAXIWAY J
20 LT	CONSTRUCT SOUTH GENERAL AVIATION APRON - PHASE 3
21 LT	RAMP EXPANSION EAST OF AIR TRAFFIC CONTROL TOWER
22 LT	SNOW PLOWS - NS
23 LT	PARKING GARAGE EXPANSION - PHASE 4
24 LT	TERMINAL EASTERLY EXPANSION/RENOVATION
NS - NOT SHOWN	

THIRD PARTY TENANT DEVELOPMENT	
NO.	DESCRIPTION
CB1	AIR CARGO BUILDING
CB2	AIR CARGO BUILDING
H1	CONVENTIONAL HANGAR
H2	CONVENTIONAL HANGAR
H3	CONVENTIONAL HANGAR
H4	CONVENTIONAL HANGAR
H5	CONVENTIONAL HANGAR
H6	CONVENTIONAL HANGAR
H7	CONVENTIONAL HANGAR
H8	GENERAL AVIATION HANGAR/OFFICES
H9	GENERAL AVIATION HANGAR/OFFICES
H10	CONVENTIONAL HANGAR
H11	CONVENTIONAL HANGAR
H12	CONVENTIONAL HANGAR
NS - NOT SHOWN	

ULTIMATE INTERMEDIATE TERM BUILDINGS/FACILITIES	
NO.	DESCRIPTION
1 IT	CONSTRUCT TAXIWAY C REALIGNMENT - PHASE 1
2 IT	LOADING BRIDGE - NS
3 IT	LAND ACQUISITION AND PARKING EXPANSION
4 IT	CONSTRUCT AIR CARGO TAXIWAY - PHASE 2
5 IT	LOADING BRIDGES - NS
6 IT	REPLACE REGIONAL BOARDING RAMPS AT GATE 1B AND 1C - NS
7 IT	RELOCATE TAXIWAY A EAST OF RUNWAY 18-36
8 IT	CONSTRUCT TAXIWAY C REALIGNMENT - PHASE 2
9 IT	RELOCATE SERVICE ACCESS ROAD EAST OF CARGO
10 IT	PARKING GARAGE EXPANSION - PHASE 3
NS - NOT SHOWN	



Magnetic Declination 15° 26' 09" West (March 2016)  
Annual Rate of Change 00° 05' East (March 2016)

REV	DESCRIPTION	DATE	BY	APPD
6	ADDED ILS CRITICAL AREAS AND RE-POSTED TO FAA OEAAA	09.27.18	LA	DDA
5	SUBMITTED TO CITY WITH FINAL MASTER PLAN DOCUMENT	07.09.18	LA	DDA
4	POSTED ALP SET TO FAA OEAAA STUDY #2018-AN-22-NRA	01.12.18	LA	DDA
3	SUBMITTED TO FAA FOR APPROVAL	11.25.17	LA	DDA
2	ISSUED DRAFT ALP TO CITY AND FAA	11.17.17	LA	DDA
1	ISSUED TO CLIENT FOR REVIEW	07.26.16	LA	DDA



PLANNED BY: Dwight Anderson / Arnie Gray / Steve Benson  
 DETAILED BY: Lori Anthony / Diana Przybycien  
 APPROVED BY: Dwight Anderson / Mike Dmyterko  
 FILE NAME: op\_m116\_site / 195350010  
 September 2018 SHEET 4.0

SUBMITTED BY: **Stantec**  
 FOR APPROVAL BY: FEDERAL AVIATION ADMINISTRATION  
 APPROVED: [Signature]  
 DATE: 11/21/19  
 CITY OF PORTLAND, MAINE  
 APPROVED: [Signature]  
 DATE: 9/27/2018

